

AUTOMATIC SYSTEMS

EXTENSION PLAN 1 (INTERNAL ONLY) ON EXCHANGE LINE OF EXTENSION PLAN 107 WITH INTERNAL OR EXTERNAL EXTENSIONS

N4515
PAGE 1-3
ISSUE B

NOTES:-

1. This apparatus should be used in conjunction with Dgm. N4509.
2. APPARATUS REQUIRED:-
 - Telephone No. 746
 - Buzzer No. 32C-3
 - Switch No. 19B-1
 - Resistor, Carbon No. 91EJ 500
 - Cord, Inst. No. 6/61AT
 - Thermistor No. 1A-1 (Plan 107 with External Extension)
 - Block Terminal No. 35A
3. Only one Plan 1 Extension may be fitted.
4. Recover Cord, Inst. No. 4/121AT from Tele. No. 746. Fit appropriate cord inst., Buzzer No. 32C-3 and Resistor Carbon No. 91EJ. Fit Switch No. 19B-1 in auxiliary gravity springset position.
5. PLAN NO. 107 WITH INTERNAL EXTENSION

Remove straps from Terminals 6-7 and 14-15 in the Planphone A. Using Cable 8w connect as shown in Fig. 1. Under these conditions the left hand calling key of the Planphone A will call the Plan 107 Extension and the right hand calling key will call the Plan 1 Extension.
6. PLAN NO. 107 WITH EXTERNAL EXTENSION

At the Plan 107 Main transfer the earth connexion from BT7 to BT5, remove straps from Terminals 14-15 and 7-8 in the Planphone A. Using Cable 8w connect as shown in Fig. 2. Calling keys operate as in note 5. At the Plan 107 External Extension connect Thermistor No. 1A-1 between T4 and T5.
7. The Exchange line may be connected at the Plan 107 Main if more convenient.
8. See Dgm. N4700 for add-on items when alternative telephones are used.

PQ TELECOMMS HQRS. COLOUR:- W DISTN:- CB & AUTO	ISSUE		
	B	NEW FORMAT. MINOR AMENDMENTS. NOTE 8 ADDED. dIF TO 7.1.1	5-2-75
	A	REVISED FORM. RECT ELEMENT NO. 205 & BT NO. 35A ADDED. PANEL REF NOTES 5 & 3 MADE FIG. REF	27.10.65

FIG.1 SUBSCRIBER'S EXTENSION PLAN I (INTERNAL ONLY) ON EXCHANGE
LINE OF EXTENSION PLAN 107 WITH INTERNAL EXTENSION

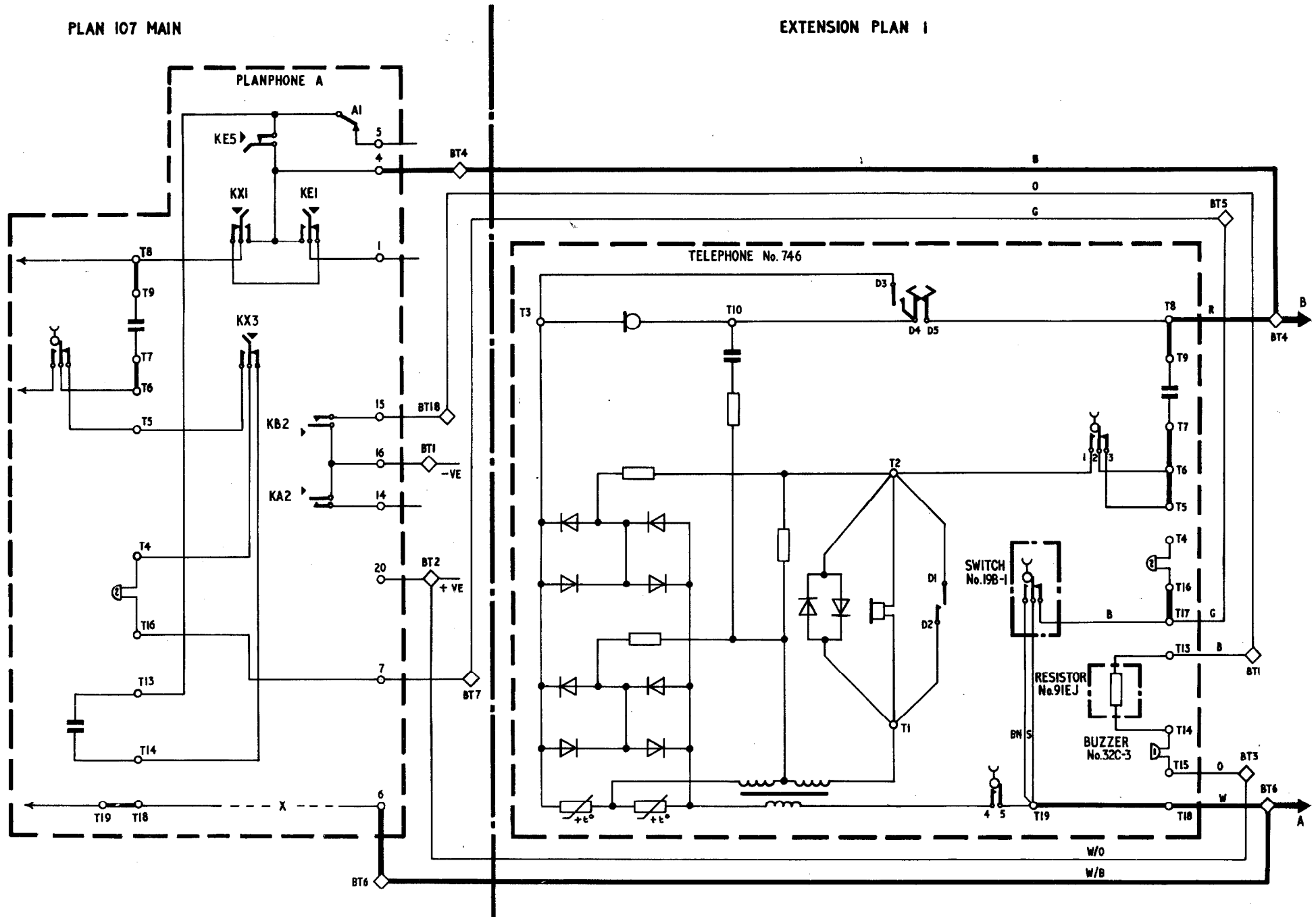


FIG.2 SUBSCRIBER'S EXTENSION PLAN I (INTERNAL ONLY) ON EXCHANGE
LINE OF EXTENSION PLAN 107 WITH EXTERNAL EXTENSION

