

# AUTOMATIC SYSTEMS

## EXTENSION PLAN I (INTERNAL ONLY)

NOTES:-  
GENERAL:-

1. The facilities of Plan I are shown on Dgm. NI424.
2. This diagram may also be used for maintenance of existing Plan I installations which are similar but are fitted with Parts 1/DSP/1245 instead of Switches No. 5A-4 and Block Terminals Nos. 30, 20/8 & 31A.
3. Bell No. 56A coils to be connected in series.
4. The exchange Line may be connected to BT4 and BT6 at extensions if more convenient.

**APPARATUS REQUIRED :-**

**5. WITH FOUR EXTENSIONS**

**MAIN**

- (a) Telephone No. 740
- (b) Part 2/DST/836
- (c) Cord, Inst. No. 9/21 AD...
- (d) Block Terminal No. 36B
- (e) Part 5/DBU/372
- (f) Part 6/DBU/372
- (g) Part 7/DBU/372
- (h) Part 9/DBU/372
- (j) 4 Parts 1/DPI/203
- (k) 4 Switches No. 5A-4

**EXTENSION**

- (a) Telephone No. 746
- (b) Bell No. 56A
- (c) Block Terminal No. 36B  
(Block Terminal No. 35A at Last).

6. **WITH THREE EXTENSIONS**  
Items (a) to (g) above plus:-  
3 Parts 1/DPI/203  
3 Switches No. 5A-4

**EXTENSION**

Items (a) to (c) above.

7. **WITH TWO EXTENSIONS**

**MAIN**

- (a) Telephone No. 746
- (b) 2 Parts 1/DPI/203
- (c) Block Terminal No. 36B
- (d) Cord, Inst. No. 9/21 AD
- (e) Part 5/DBU/363
- (f) Part 6/DBU/363
- (g) 2 Parts 1/DPL/1022
- (h) 2 Switches No. 5A-4

**EXTENSION**

Items (a) to (c) above.

8. **WITH ONE EXTENSION**

**MAIN**

- Items (a) to (c) above plus:-  
Cord Inst No. 6/61 AT  
Part 1/DBU/362  
Part 1/DPL/1022  
Switch No. 5A-4

**EXTENSION**

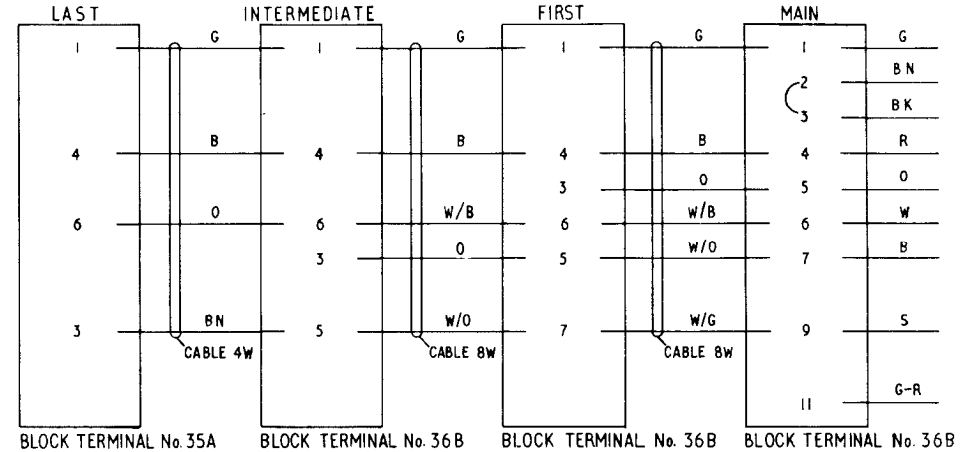
Items (a) & (b) above plus:-  
Block Terminal No. 35A.

At Main, using Telephone No. 740 fit Switches No. 5A-4 and Parts No. .../DBU/372 for each extension in positions A to D. Adjust Latches to setting 3, the X & Y Latches to setting 5 (see Dgm. N848).

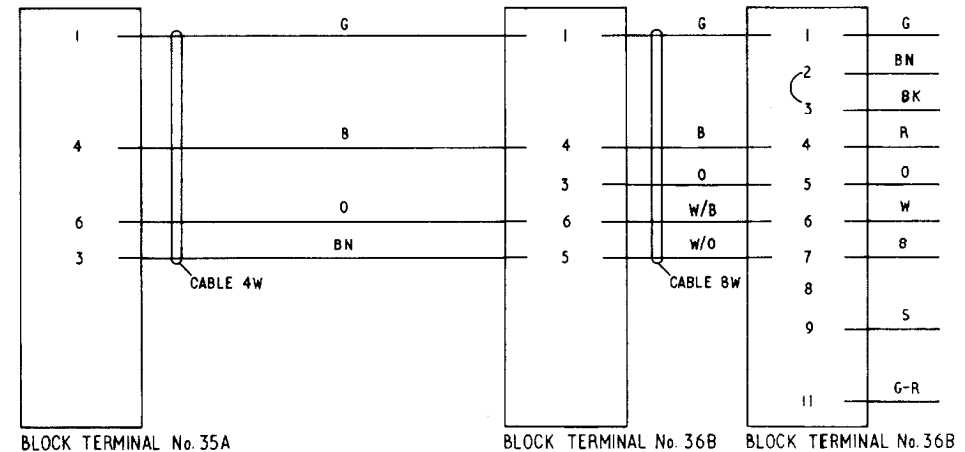
10. At Main, using Telephone No. 746, fit Switches No. 5A-4 and Parts .../DBU/363 or 1/DBU/362. Connect brown and slate leads of Switches No. 5A-4 to Terminals T18 & T19 in lieu of T20 & T21 respectively shown in Figs. 3 and 4.
11. When extension bell is required, connect in place of Straps BT2-3 at Main.
12. See Dgm. N4700 for add-on items when alternative telephones are used.

**CABLING :-**

13. **THREE EXTNS:**



14. **TWO EXTNS:**



15. On earlier installations with two, three and four extensions the O and W/B conductors were reversed.

CORD, INST. No. 9/21 AD...

CORD, INST. No. 9/21 AD...

P O TELECOMMS. HQRS.	ISSUE			
PAPER:- W				
DISTN:	E	Teles. changed. Notes rewritten.	D.I.F.	TD 7-1-1 27-8-75
CB & AUTO	D	Revised form. Minor amendments.		19-11-65

FIG. 1 WITH ONE EXTENSION  
EXPLANATORY

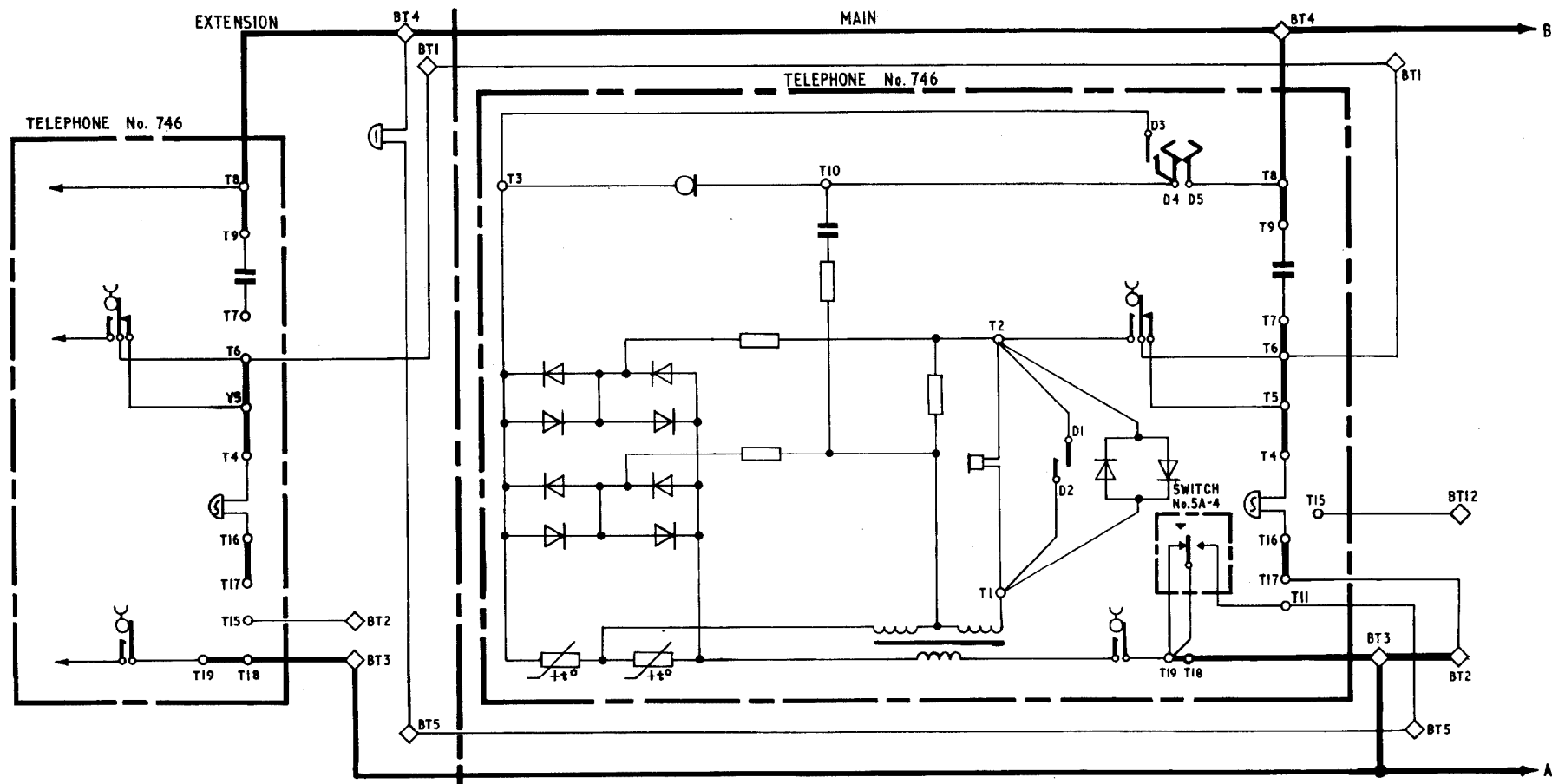


FIG. 2  
WIRING

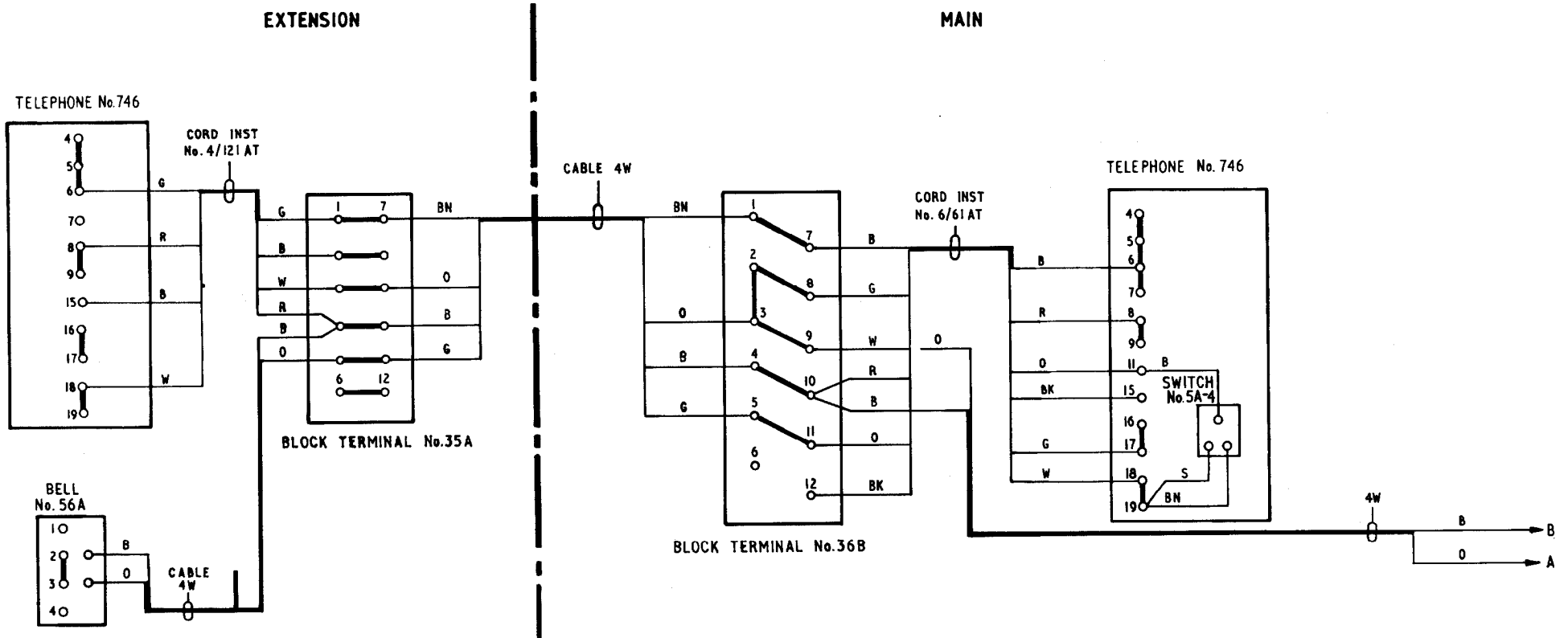


FIG.3 WITH FOUR EXTENSIONS  
(SEE NOTES 13 & 14 FOR THREE OR TWO EXTENSIONS)

EXPLANATORY

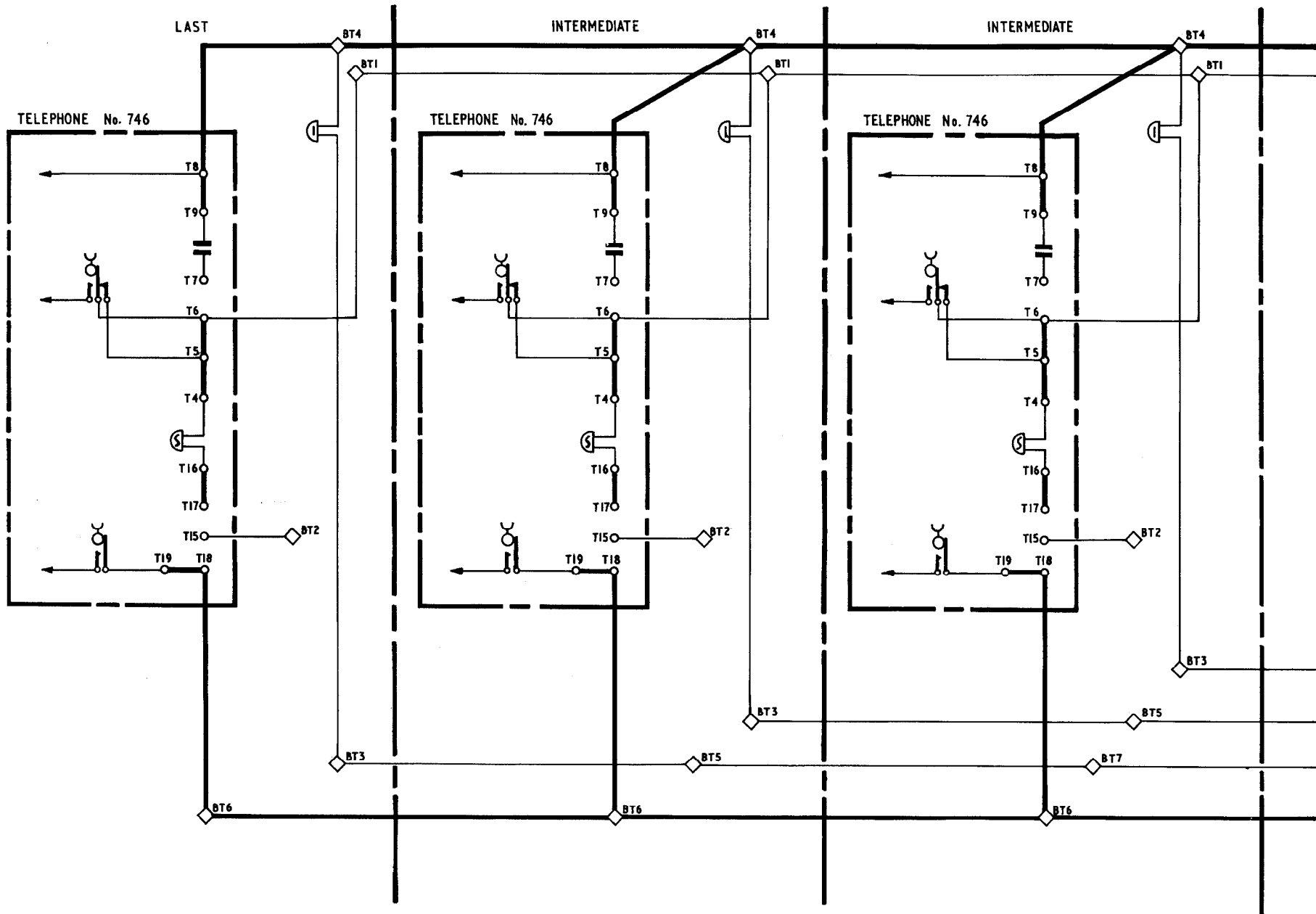


FIG. 3

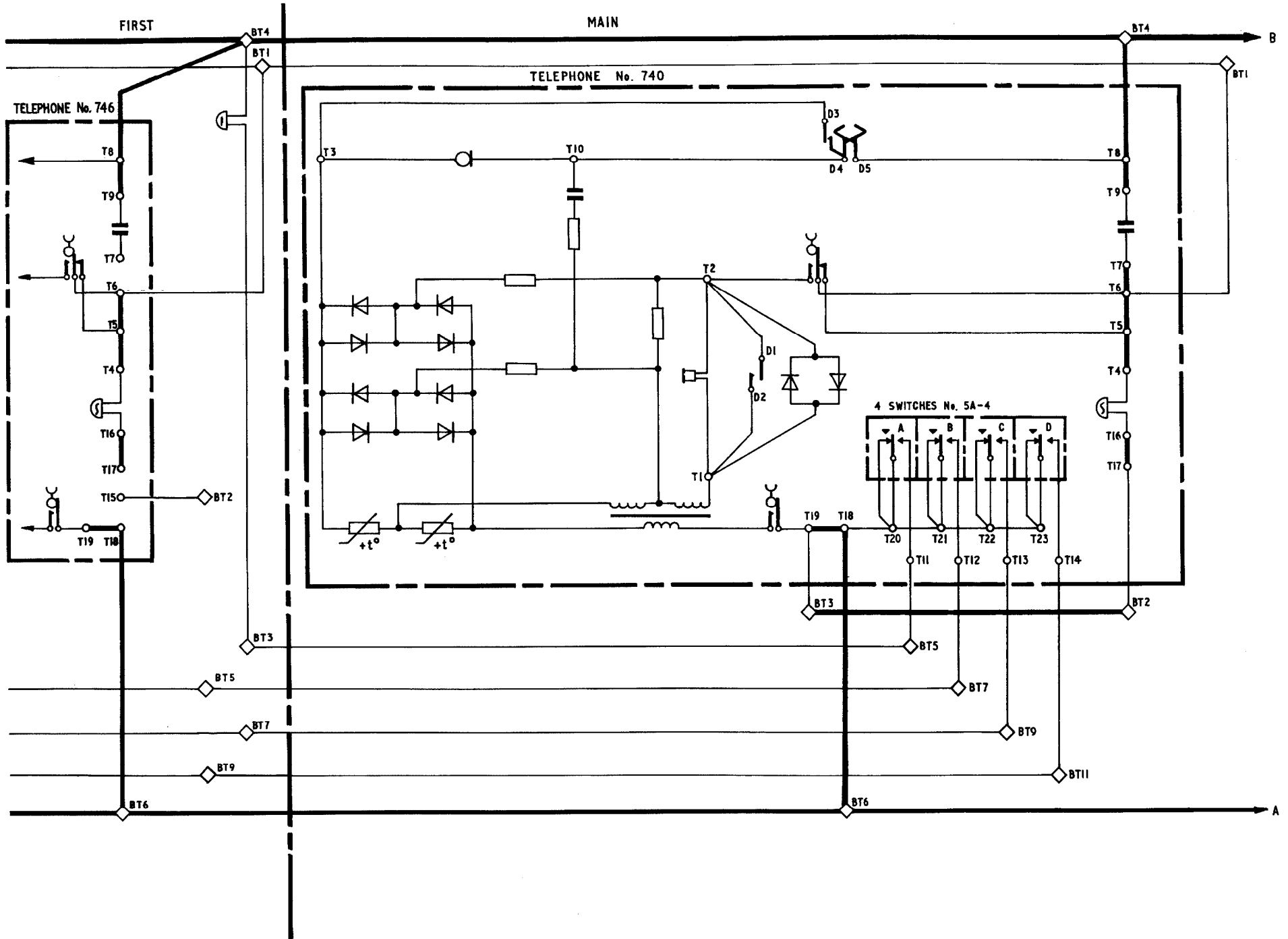
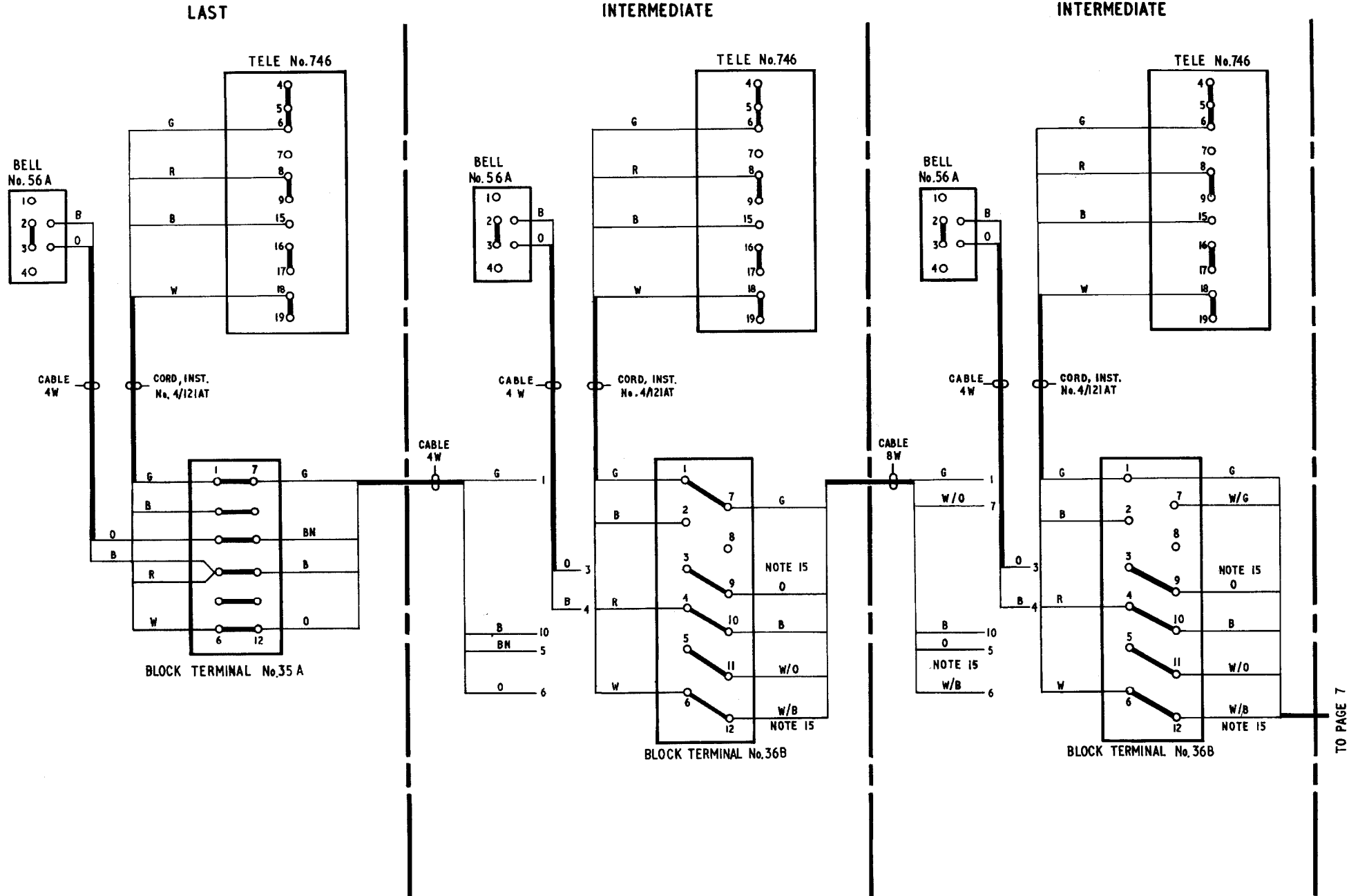


FIG. 4

WIRING



TO PAGE 7

