

CB & AUTOMATIC SYSTEMS
SUBSCRIBERS EXTENSION PLAN I (INTERNAL ONLY)

USING LOUDSPEAKING TELEPHONES Nos. 1 MK II & 1A MK I & TELEPHONES Nos. 740... & 746...

N4484
PAGE I-II
ISSUE B

NOTES:-

- | | | | | | | |
|--|---|--|---|---|--|---|
| <p>1. The facilities of Plan 1 are shown on Dgm. N1424.</p> <p>2. This diagram shows the use of Loudspeaking Telephones Nos. 1 & 1A in association with Telephones Nos. 740... & 746... in subscribers extension Plan 1.</p> <p>3. One loudspeaking telephone only may be fitted to a Plan 1 installation, either at the main or an extension. The last extension only is shown but a loudspeaking telephone may be fitted at any extension.</p> <p>4. For installation adjustment of Loudspeaking Telephones Nos. 1 & 1A see TI C3 B 2001.</p> <p>5. Bells No. 56A coils to be connected in series.</p> <p>6. When a Telephone No. 740... is used at the main see Dgm. N4501 for details of apparatus required.</p> <p>7. When an extension bell is required, connect in place of Strap BT2-BT3 at Main.</p> <p>8. This diagram may be used to connect Loudspeaking Telephone No. 1 MKI which uses Amplifier No. 138A in place of Amplifier No. 138B & Telephone No. 708... with Connector No. 1014C in place of Telephone No. 708... with Connector No. 1018... The G-W, G-BN, G-S & BN-W conductors in the Connector No. 1014C and terminals 15 & 16 in the amplifier are not provided.</p> <p>9. The colours shown are those for Connector No. 1018D. The colours shown in brackets refer to Connector No. 1018A.</p> <p>10. APPARATUS REQUIRED ALTERNATIVE TO THAT GIVEN IN DGM. N4501 LOUDSPEAKING TELEPHONE AT MAIN:-</p> <p>With four extensions</p> | <p>(a) Telephone No. 716... with Connector No. 1018...</p> <p>(b) Control-Unit No. 8A... with Connector No. 1014B</p> <p>(c) Amplifier No. 138B</p> | <p>(d) Part 2/DST/836</p> <p>(e) Block, Terminal No... as required</p> <p>(f) 1 Part each 25/, 26/, 27 and 29/DBU/260</p> <p>(g) 4 Switches No. 5A-4</p> | <p>With three extensions</p> <p>(a) Telephone No. 716... with Connector No. 1018...</p> <p>(b) Control-Unit No. 8A... with Connector No. 1014B</p> <p>(c) Amplifier No. 138B</p> <p>(d) Part 2/DST/836</p> <p>(e) Block, Terminal No... as required</p> <p>(f) 1 Part each 25/, 26/ and 27/DBU/260</p> <p>(g) 3 Switches No. 5A-4</p> | <p>(a) Telephone No. 716... with Connector No. 1018...</p> <p>(b) Control-Unit No. 8A... with Connector No. 1014B</p> <p>(c) Amplifier No. 138B</p> <p>(d) Part 2/DST/836</p> <p>(e) Block, Terminal No... as required</p> <p>(f) 1 Part each 25/ and 26/DBU/260</p> <p>(g) 2 Switches No. 5A-4</p> | <p>With two extensions</p> <p>(a) Telephone No. 708... with Connector No. 1018...</p> <p>(b) Control-Unit No. 8A... with Connector No. 1014B</p> <p>(c) Amplifier No. 138B</p> <p>(d) Part 2/DST/836</p> <p>(e) Block, Terminal No... as required</p> <p>(f) Switch No. 5A-3</p> <p>(g) Part 1/DBU/263</p> | <p>With one extension</p> <p>(a) Telephone No. 708... with Connector No. 1018...</p> <p>(b) Control-Unit No. 8A... with Connector No. 1014B</p> <p>(c) Amplifier No. 138B</p> <p>(d) Part 2/DST/836</p> <p>(e) Block, Terminal No... as required</p> <p>(f) Switch No. 5A-3</p> <p>(g) Part 1/DBU/263</p> |
|--|---|--|---|---|--|---|

11. See Page 2

12. See Page 3

PD TELECOMMS HQRS PAPER:- W DISTR:- GENERAL	ISSUE				
		B	CORD COLOURS AMENDED. E.M.S. <i>R. DIF.</i>	25-10-78	
		A	NEW FORMAT. MINOR AMENDMENTS. <i>PTB.</i>	28-4-76	
		/	H. THWAITE	8-3-63	

NOTES CONT.

11. APPARATUS REQUIRED ALTERNATIVE TO THAT GIVEN IN DGM N4501
LOUDSPEAKING TELEPHONE AT EXTENSION:-

With one
extension

LAST

- (a) Telephone No. 708... with Connector No. 1018...
- (b) Control-Unit No. 8A with Connector No. 1014B
- (c) Amplifier No. 138B
- (d) Bell No. 56A
- (e) Block, Terminal No... as required

INTERMEDIATE & FIRST

LAST

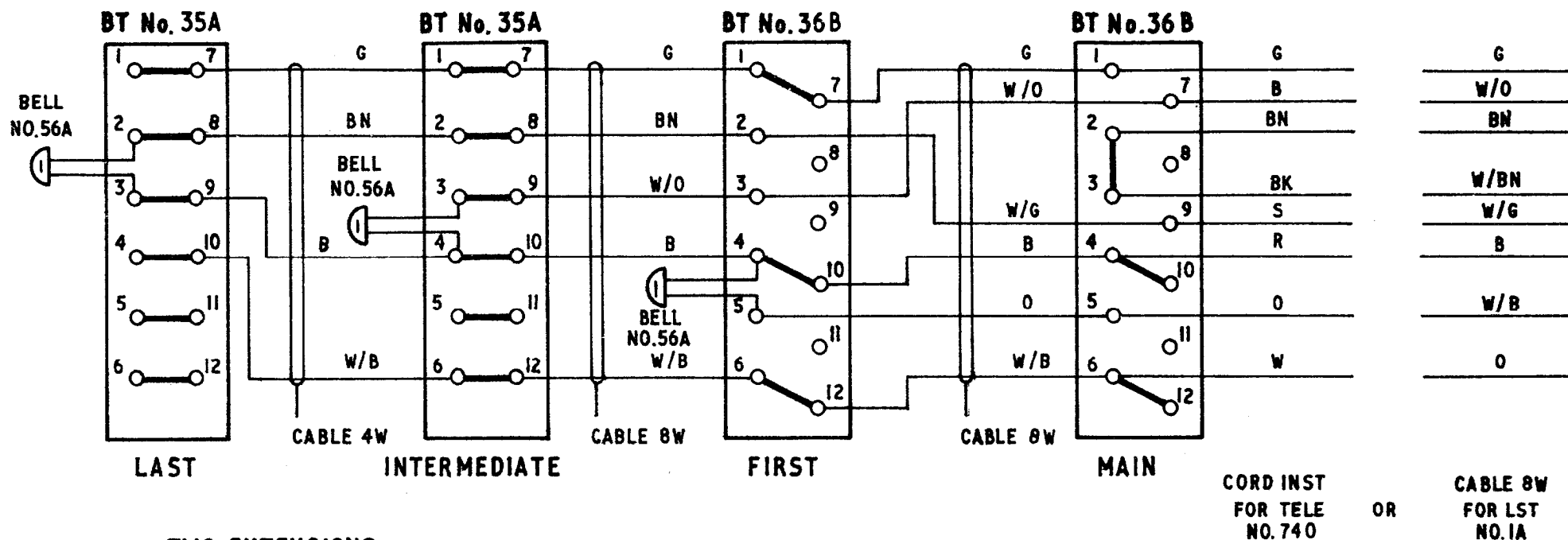
- | | | |
|----------------------|---|---|
| With four extensions | (a) Telephone No. 708... with Connector No. 1018... | (a) Telephone No. 708... with Connector No. 1018... |
| | (b) Control-Unit No. 8A with Connector No. 1014B | (b) Control-Unit No. 8A with Connector No. 1014B |
| | (c) Amplifier No. 138B | (c) Amplifier No. 138B |
| | (d) Bell No. 56A | (d) Bell No. 56A |
| | (e) Block, Terminal No... as required | (e) Block, Terminal No... as required |

12. See Page 3

- | | | |
|-----------------------|---|---|
| With three extensions | (a) Telephone No. 708... with Connector No. 1018... | (a) Telephone No. 708... with Connector No. 1018... |
| | (b) Control-Unit No. 8A with Connector No. 1014B | (b) Control-Unit No. 8A with Connector No. 1014B |
| | (c) Amplifier No. 138B | (c) Amplifier No. 138B |
| | (d) Bell No. 56A | (d) Bell No. 56A |
| | | (e) Block, Terminal No... as required |

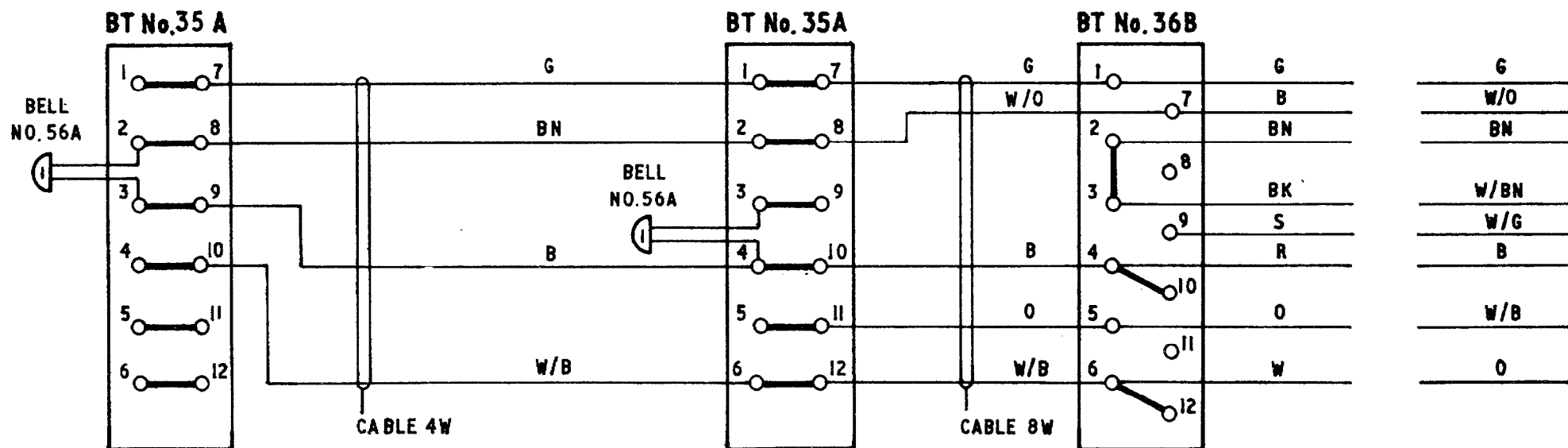
- | | | |
|---------------------|---|---|
| With two extensions | (a) Telephone No. 708... with Connector No. 1018... | (a) Telephone No. 708... with Connector No. 1018... |
| | (b) Control-Unit No. 8A with Connector No. 1014B | (b) Control-Unit No. 8A with Connector No. 1014B |
| | (c) Amplifier No. 138B | (c) Amplifier No. 138B |
| | (d) Bell No. 56A | (d) Bell No. 56A |
| | | (e) Block, Terminal No... as required |

NOTES CONT.
12. CABLING
THREE EXTENSIONS



CORD INST FOR TELE NO. 740 OR CABLE 8W FOR LST NO. 1A

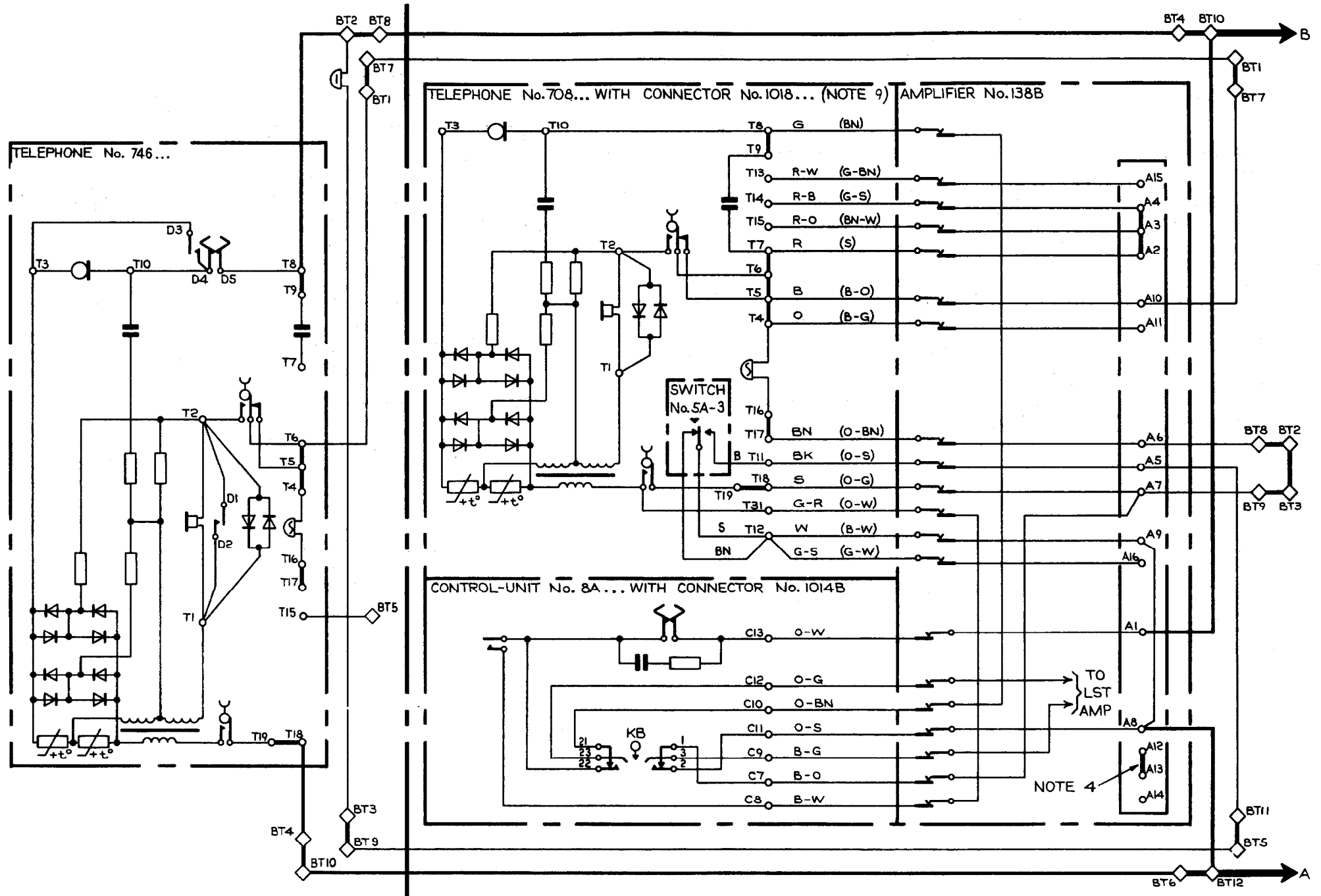
TWO EXTENSIONS



EXPLANATORY
ONE EXTENSION - LOUDSPEAKING TELEPHONE No.1 AT MAIN

EXTENSION

MAIN



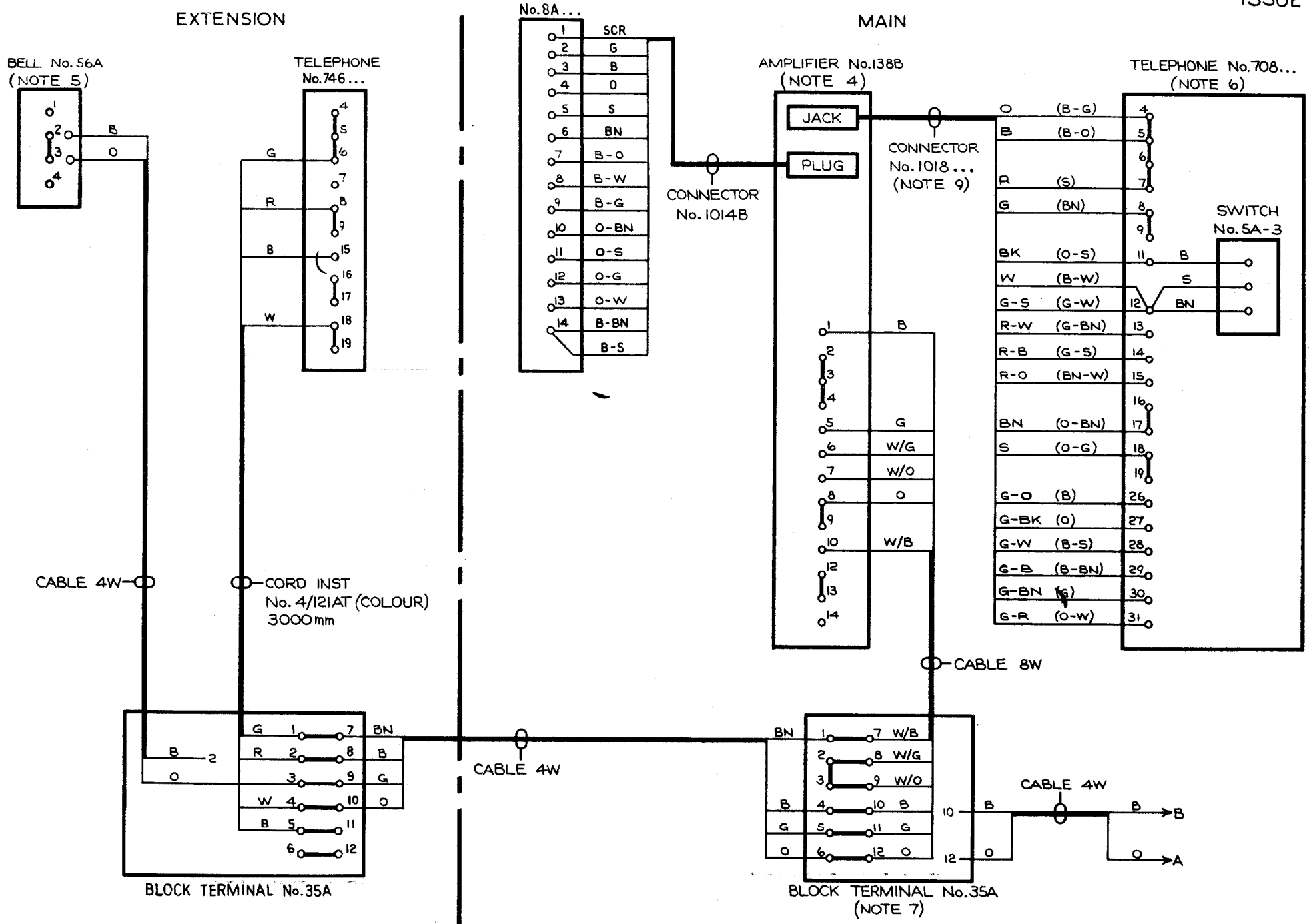
WIRING

ONE EXTENSION-LOUDSPEAKING TELEPHONE No.1 AT MAIN CONTROL-UNIT

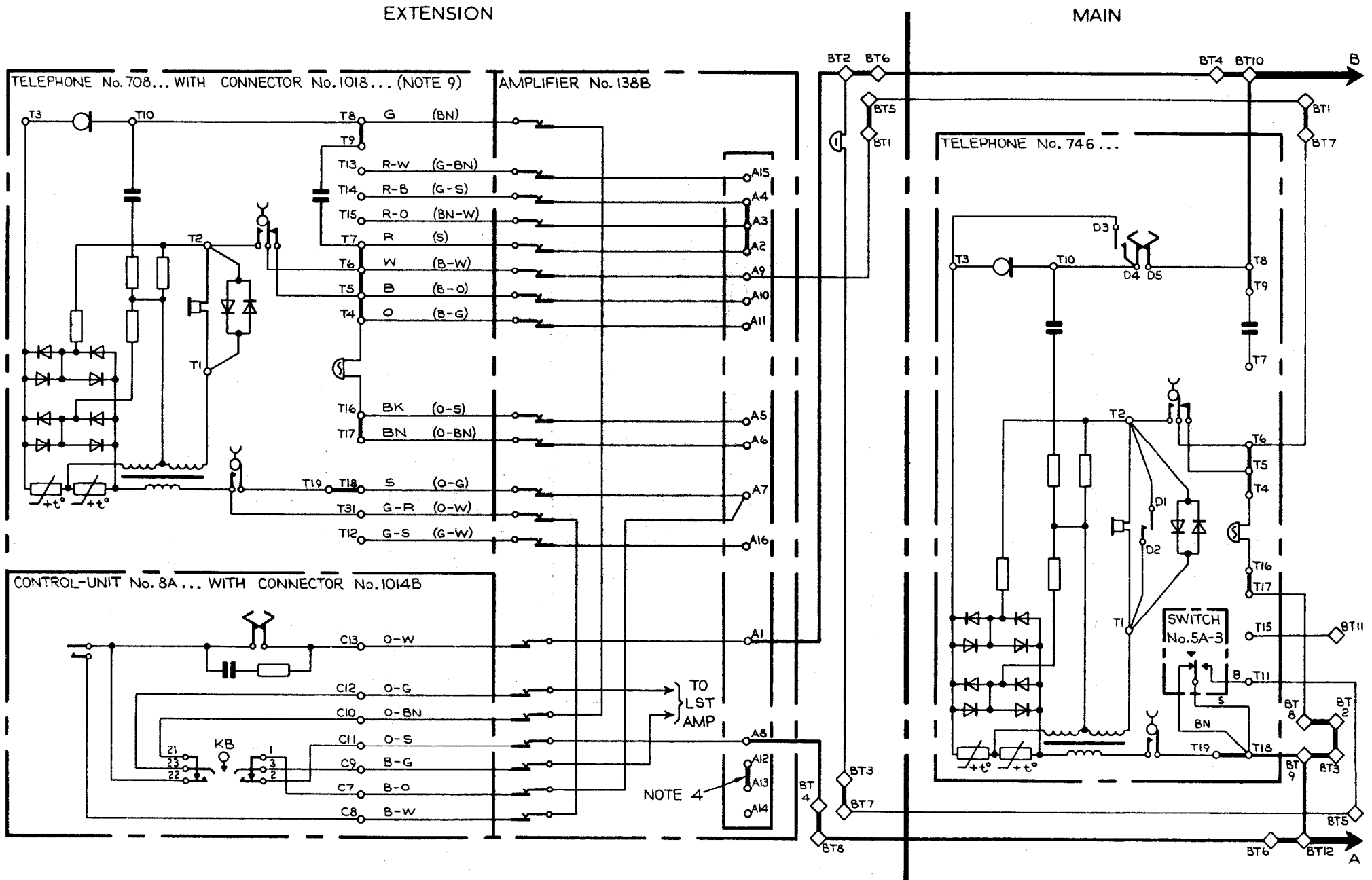
N4484

PAGE 5

ISSUE B



EXPLANATORY
 ONE EXTENSION - LOUDSPEAKING TELEPHONE No.1 AT EXTENSION



WIRING

ONE EXTENSION - LOUDSPEAKING TELEPHONE No.1 AT EXTENSION

N4484

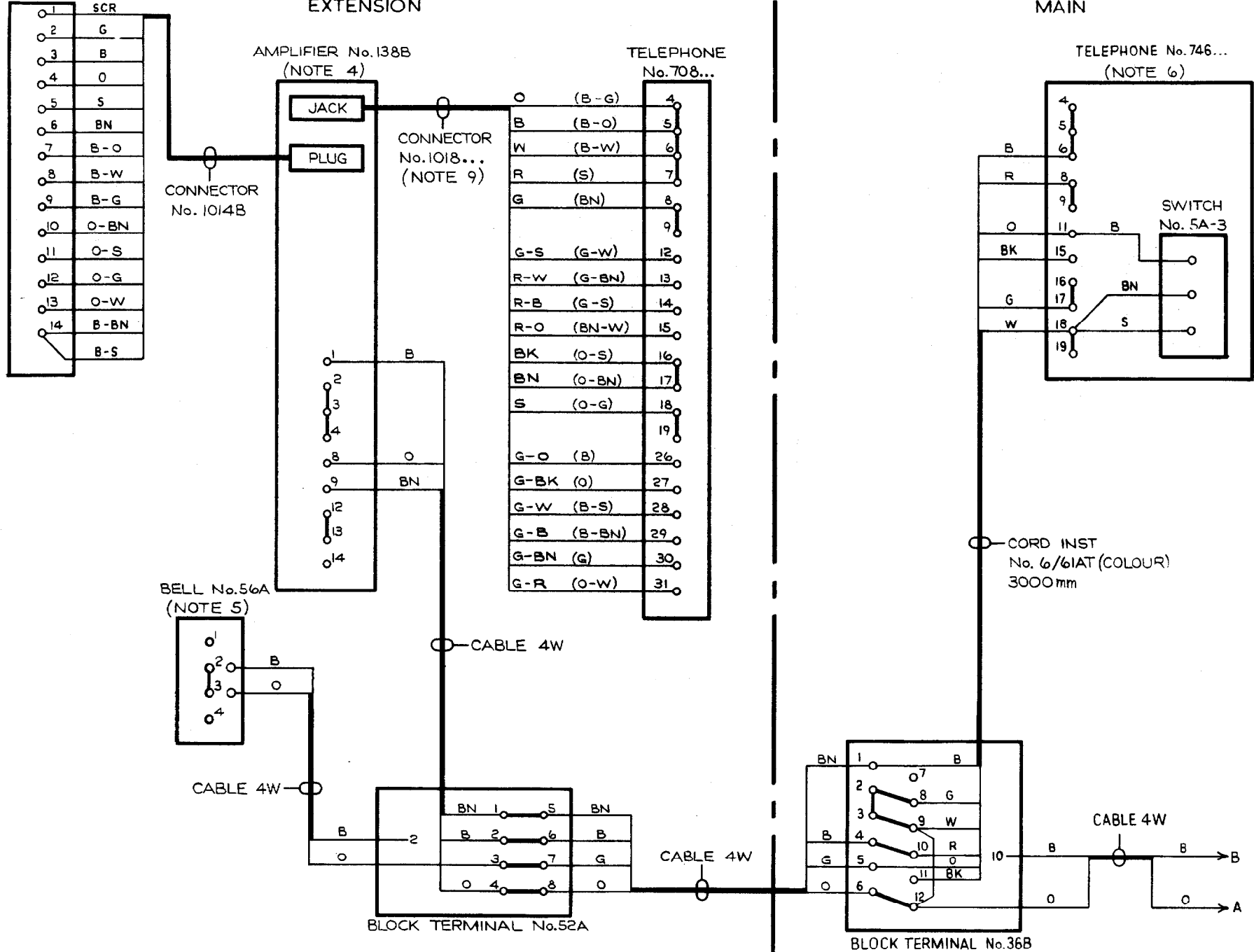
PAGE 7

ISSUE B

CONTROL-UNIT
No.8A...

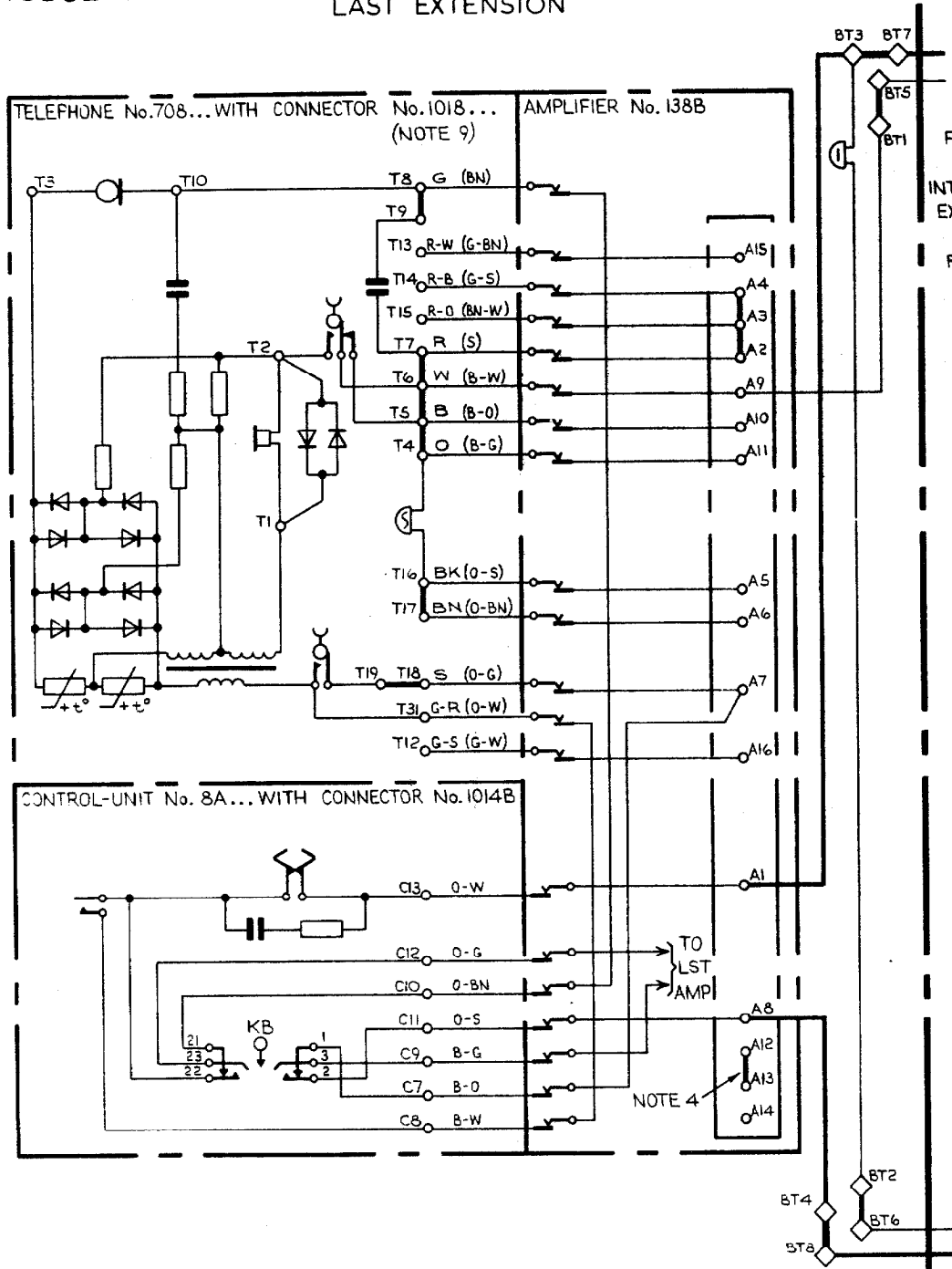
EXTENSION

MAIN

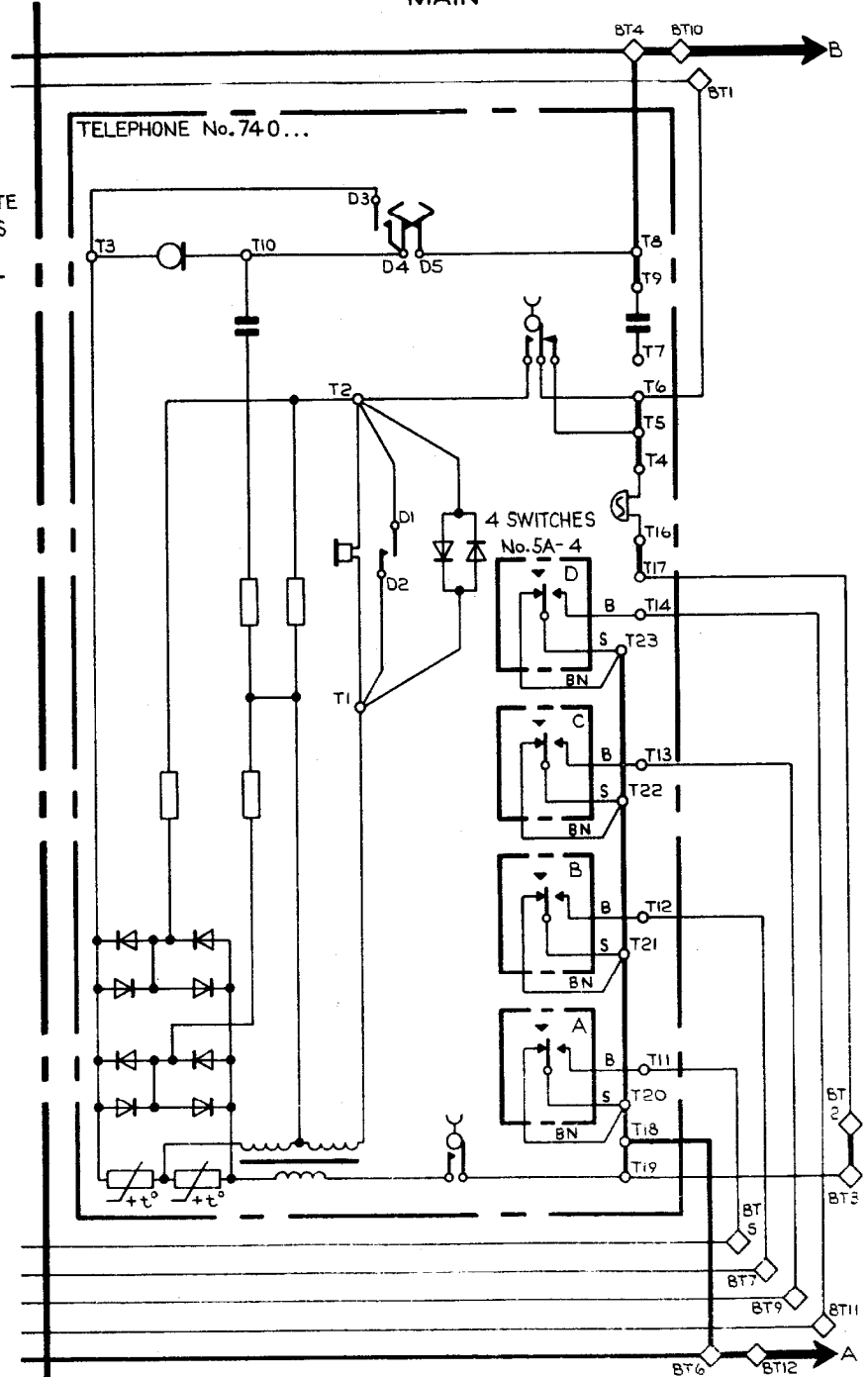


EXPLANATORY
FOUR EXTENSIONS - LOUDSPEAKING TELEPHONE No.1 AT LAST EXTENSION

LAST EXTENSION



MAIN

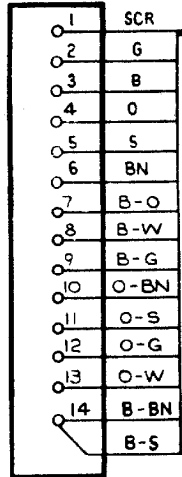


WIRING

FOUR EXTENSIONS-LOUDSPEAKING TELEPHONE No.1 AT LAST EXTENSION

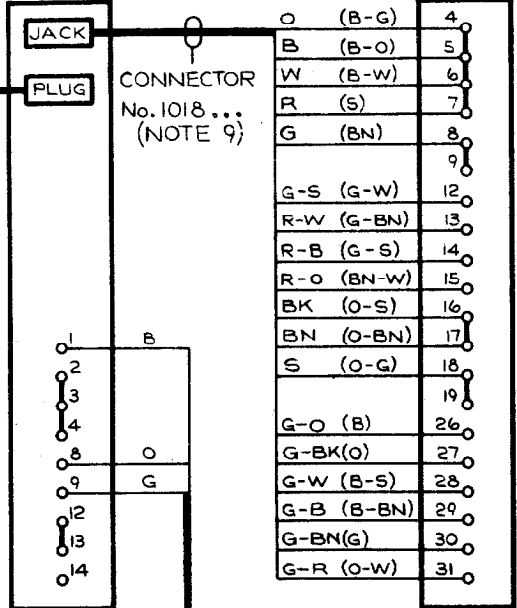
CONTROL-UNIT

No.8A...



LAST EXTENSION

AMPLIFIER No.138B
(NOTE 4)

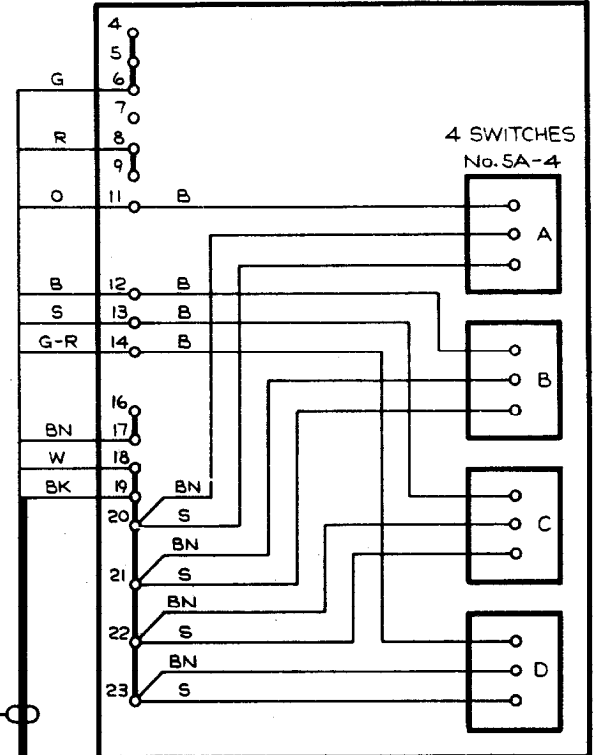


TELEPHONE No.708...

FOR FIRST
AND
INTERMEDIATE
EXTENSIONS
SEE
RELEVANT
N DGM

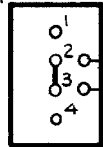
MAIN

TELEPHONE No.740...

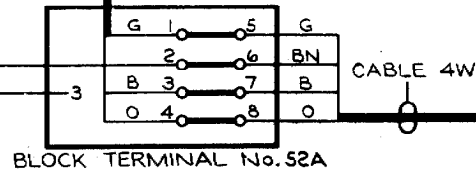


CORD INST
No.9/21AD (COLOUR)
3000mm

BELL No.56A
(NOTE 5)

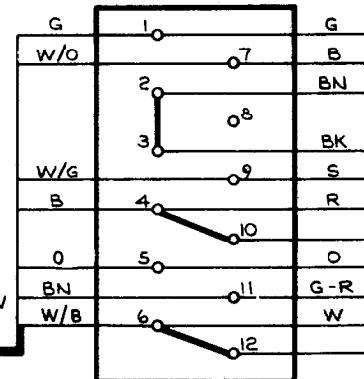


CABLE 4W



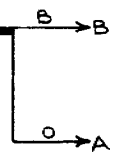
BLOCK TERMINAL No.52A

CABLE 8W



BLOCK TERMINAL No.36B
(NOTE 7)

CABLE 4W



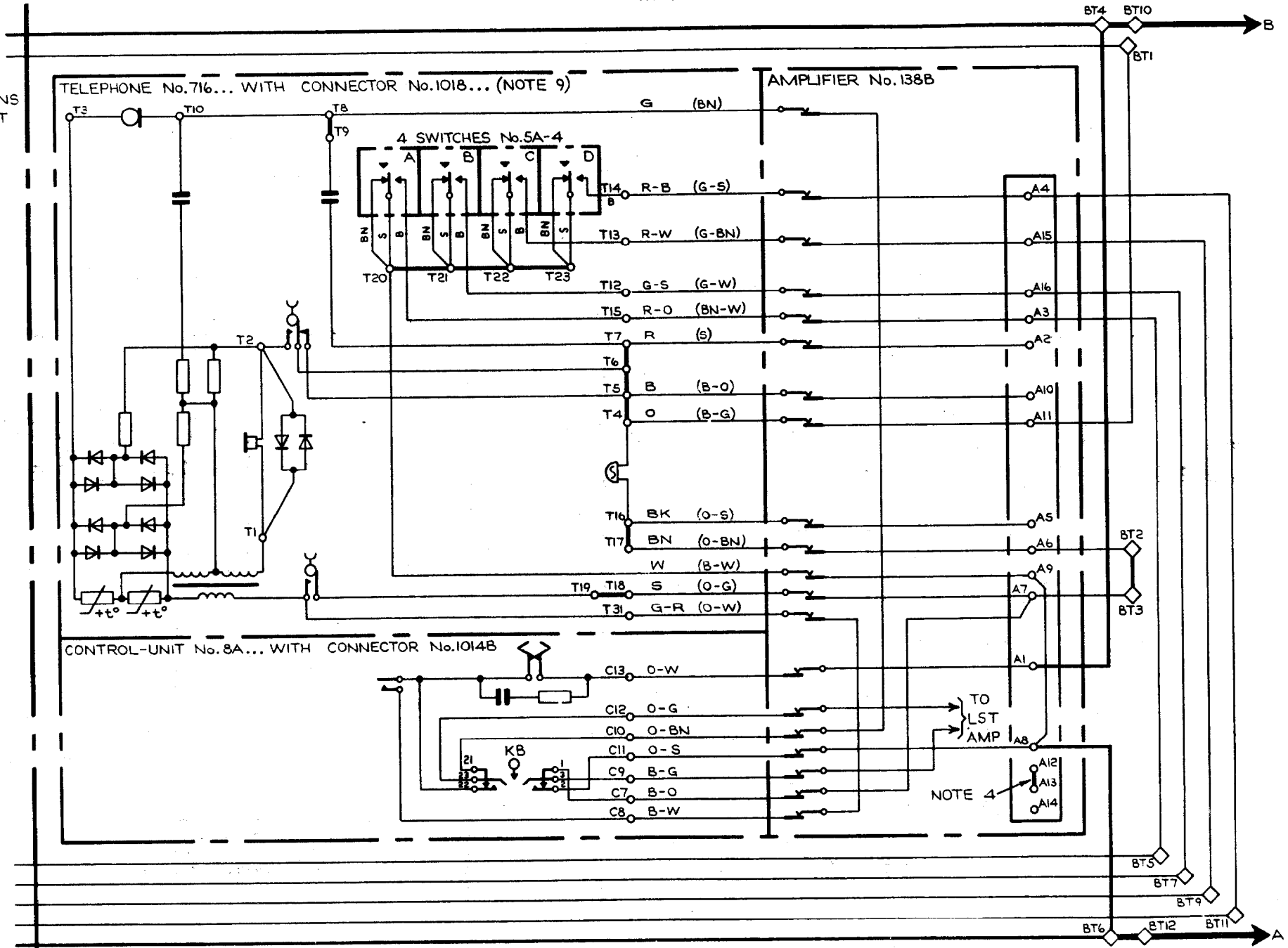
EXPLANATORY

FOUR EXTENSIONS — LOUDSPEAKING TELEPHONE No.1A AT MAIN

(SEE NOTE 12 FOR THREE OR TWO EXTNS)

MAIN

FOR EXTENSIONS
 SEE RELEVANT
 N DGM



WIRING

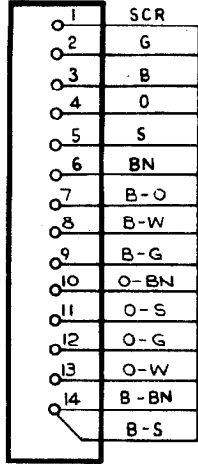
N4484

PAGE 11

ISSUE B

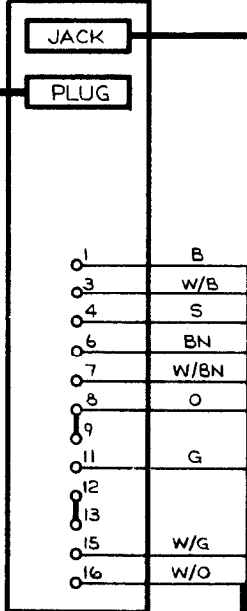
FOUR EXTENSIONS—LOUDSPEAKING TELEPHONE No.1A AT MAIN (SEE NOTE 12 FOR THREE OR TWO EXTNS)

CONTROL-UNIT
No. 8A...



FOR EXTENSIONS
SEE RELEVANT
N DIAGRAM

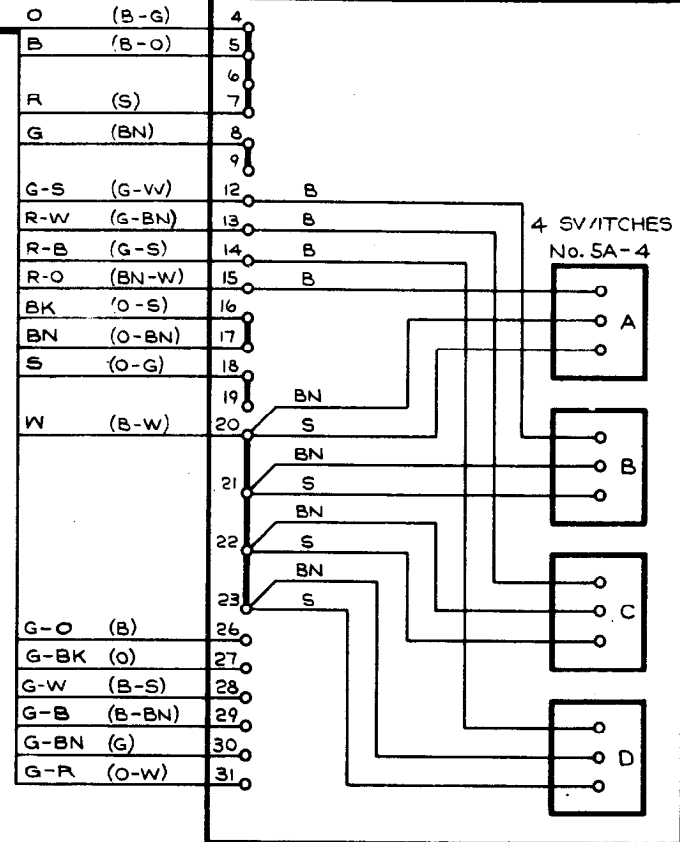
AMPLIFIER No.138B
(NOTE 4)



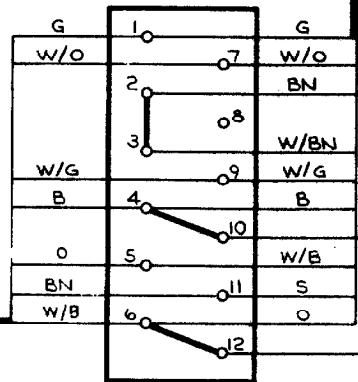
MAIN

CONNECTOR
No.1018...
(NOTE 9)

TELEPHONE No.716...
(NOTE 6)



CABLE 12W



BLOCK TERMINAL No.36B
(NOTE 7)

CABLE 8W

CABLE 4W

