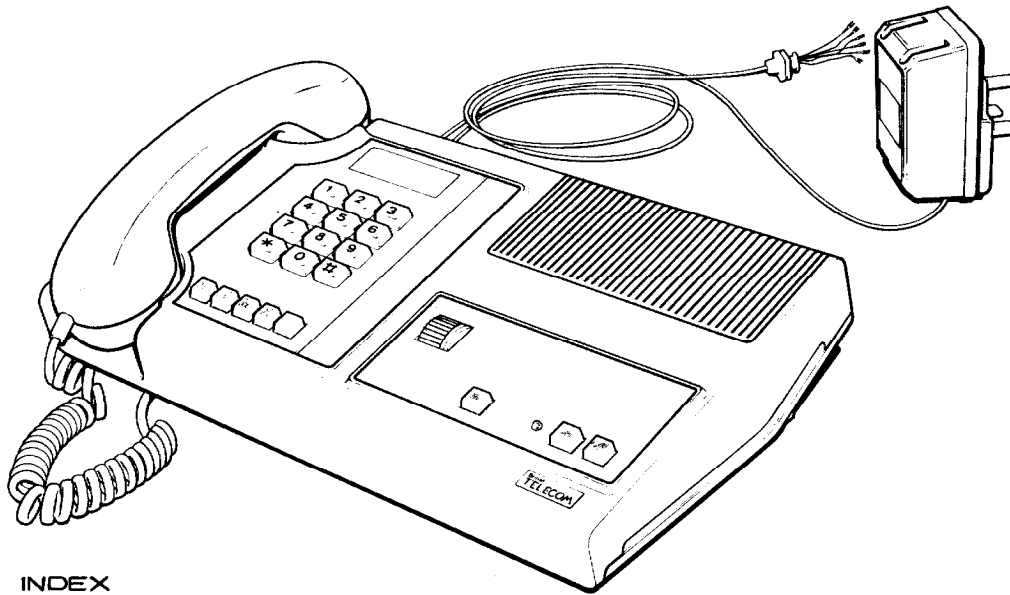


# LOUDSPEAKING TELEPHONE No.8

LST 8A 10 PPS SIGNALLING  
 LST 8B SSMF4 SIGNALLING  
 LST 8C DC CODE C SIGNALLING



## INDEX

- FIG.1 LST 8A AND B AS ISSUED.
- FIG.2 LST 8C AS ISSUED.
- FIG.3 LST 8A AND B 2-WIRE PBX EXTENSION WITH EARTH RECALL.
- FIG.4 LST 8A AND B C-WIRE SIGNALLING PBX EXTENSION WITH RECALL.
- FIG.5 LST 8A AND B SHARED SERVICE LINE.
- FIG.6 LST 8A,B AND C PLAN 1A.
- FIG.7 LST 8A AND B PLAN 107 INTERNAL EXTENSION.
- FIG.8 LST 8A AND B PLAN 105 INTERNAL EXTENSION 1.
- FIG.9 LST 8A AND B PLAN 105 INTERNAL EXTENSION 2.
- FIG.10 LST 8C PLAN 107 INTERNAL EXTENSION.
- FIG.11 LST 8C PLAN 105 INTERNAL EXTENSION 1.
- FIG.12 LST 8C PLAN 105 INTERNAL EXTENSION 2.
- FIG.13 MODIFICATION TO NEW PLAN (LST 8D).

## NOTES :-

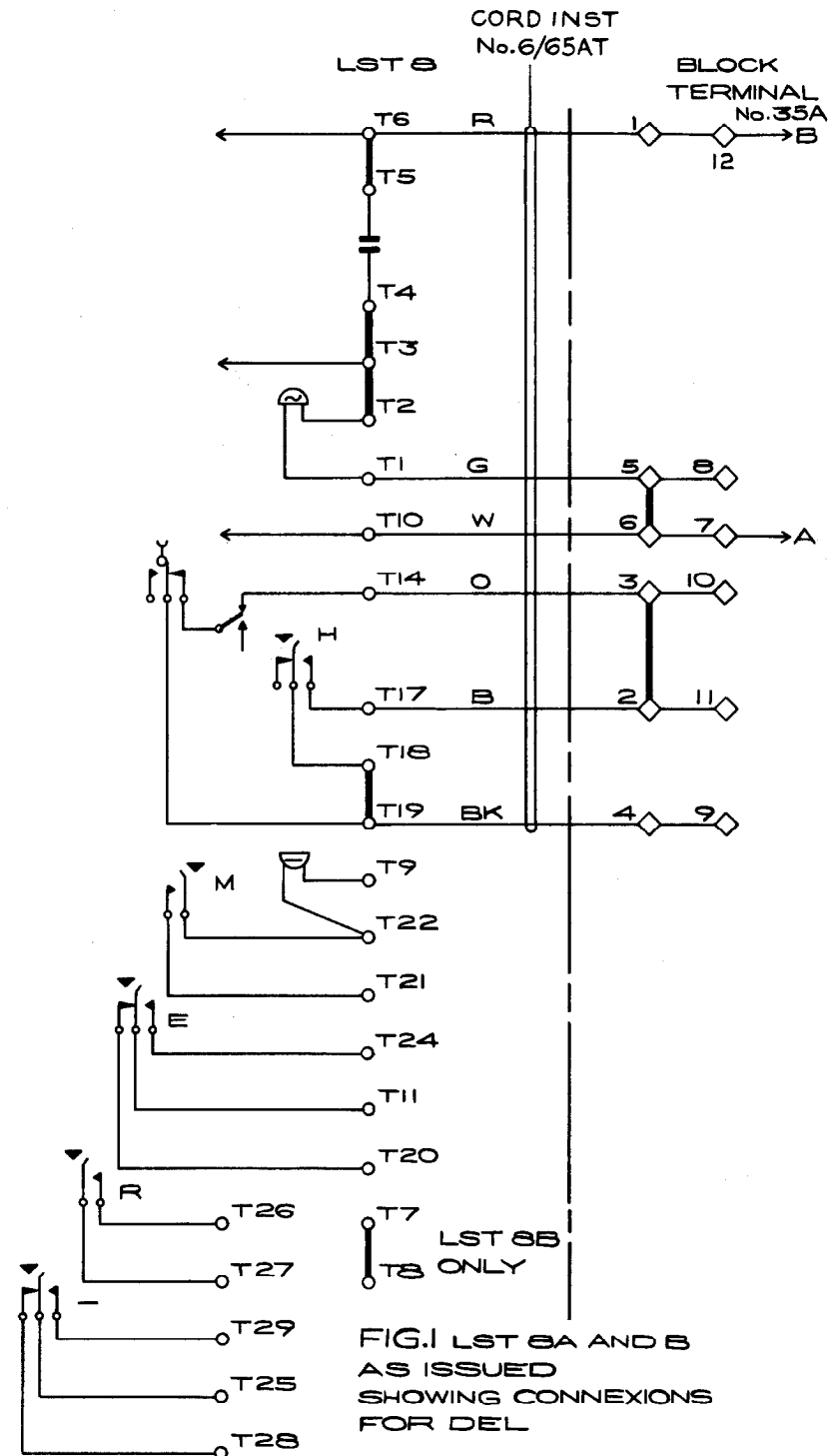
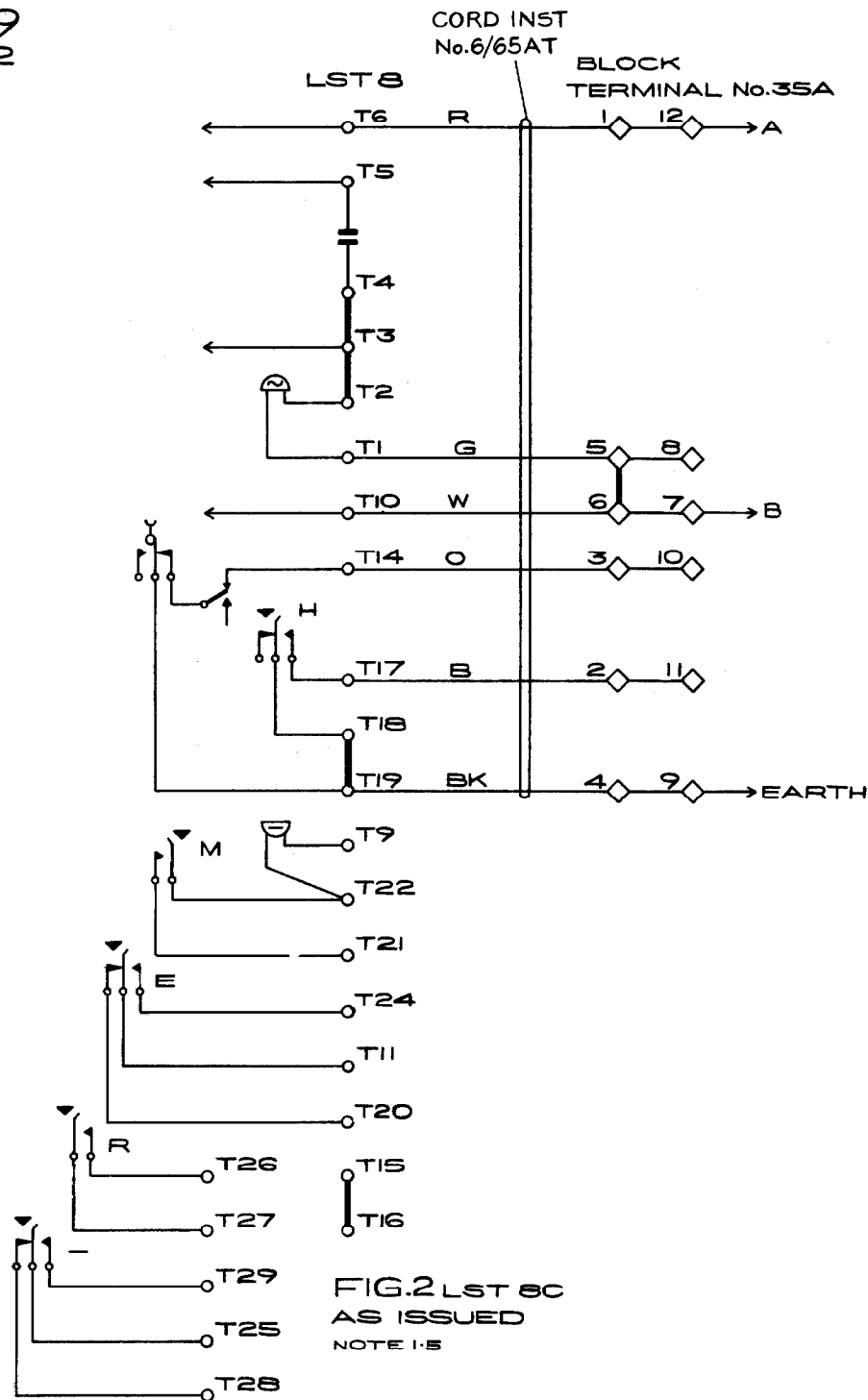
- 1-1 FOR SHARED SERVICE WORKING CONNECT THERMISTOR 1A-1 BETWEEN T1-T24 IN LST. EXCHANGE LINE CONNEXIONS SHOWN IN DIAGRAM N864.
- 1-2 THIS DIAGRAM SHOULD BE USED IN CONJUNCTION WITH DIAGRAM N4502. FOR DC CODE C, USE LST 8C AND CONNECT SIGNALLING EARTH TO THE SLATE WIRE OF THE LST 8C.
- 1-3 THIS DIAGRAM SHOULD BE USED IN CONJUNCTION WITH DIAGRAM N4509.
- 1-4 THIS DIAGRAM SHOULD BE USED IN CONJUNCTION WITH DIAGRAM N4507.
- 1-5 LST 8C - THE A AND B WIRES MUST NOT BE REVERSED. THE EARTH MUST ALWAYS BE CONNECTED TO T16.
- 1-6 FOR HIGH IMPEDENCE WORKING FIT RESISTOR 91DJ 3.3k BETWEEN T1 AND T10 AS SHOWN. FIT CORD CONNECTING 4/502 LIGHT GREY 3000mm AS SHOWN.
- 1-7 FOR CABLING OF PLANS 107/107A AND 105/105A SEE DIAGRAM SA(L) 4252.

© BRITISH TELECOMMUNICATIONS 1982

BRITISH TELECOMMS HQRS	ISSUE			
PAPER:- W				
DISTRIBUTION:- GENERAL		IFJ 847	T R Kents	PD1.1.2

## REFERENCES :

GENERAL  
 INSTALLATION. . . . . C3 B 2007  
 MAINTENACE. . . . . E5 B 2809



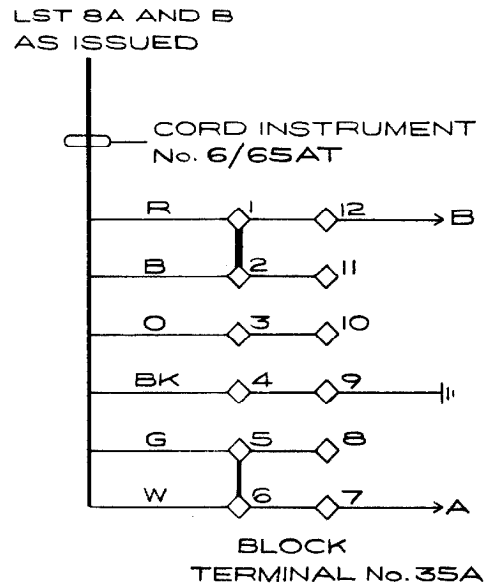


FIG.3 LST 8A AND B  
2 WIRE PBX EXTENSION  
WITH EARTH RECALL

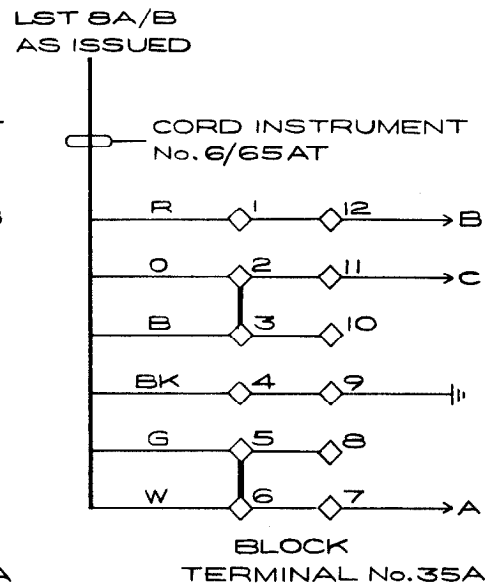


FIG.4 LST 8A AND B  
C WIRE SIGNALLING  
PBX EXTENSION

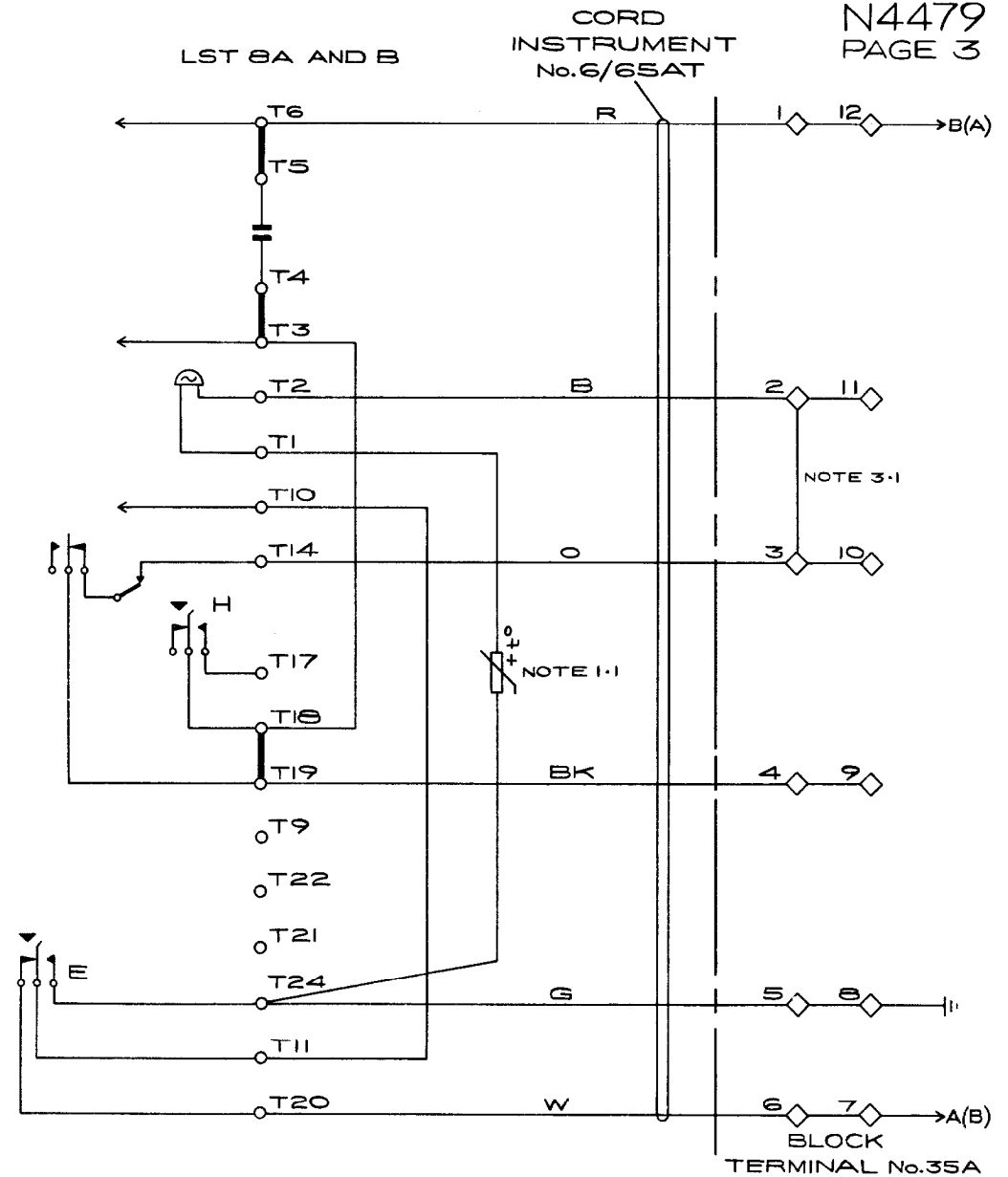


FIG.5 LST 8  
SSL CONNEXIONS

NOTE:-  
3-1 CONNECT EXTENSION BELL BETWEEN BT2-BT3.

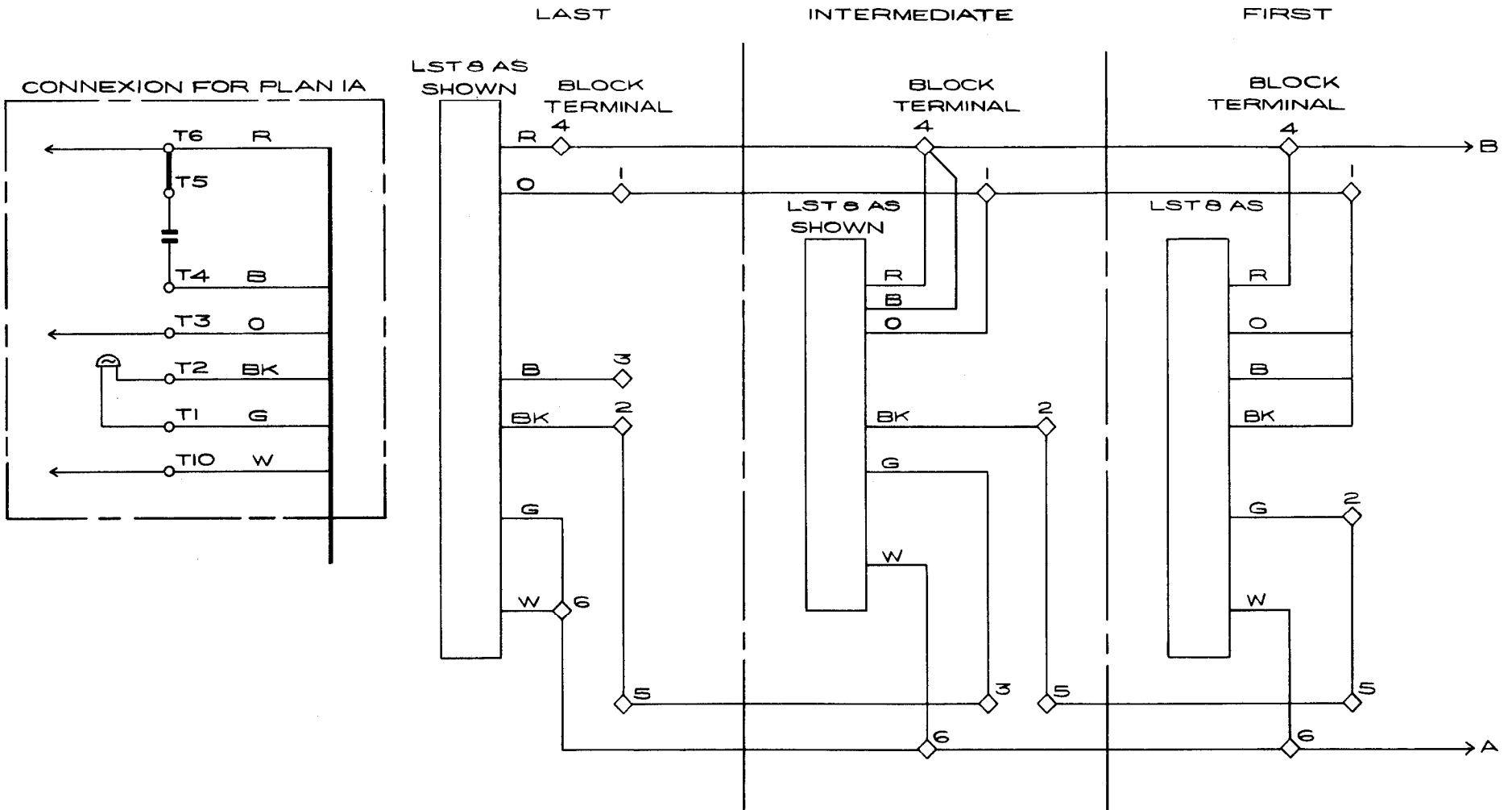


FIG.6 LST 8A AND B  
CONNECTIONS FOR  
PLAN IA NOTE 1:2

