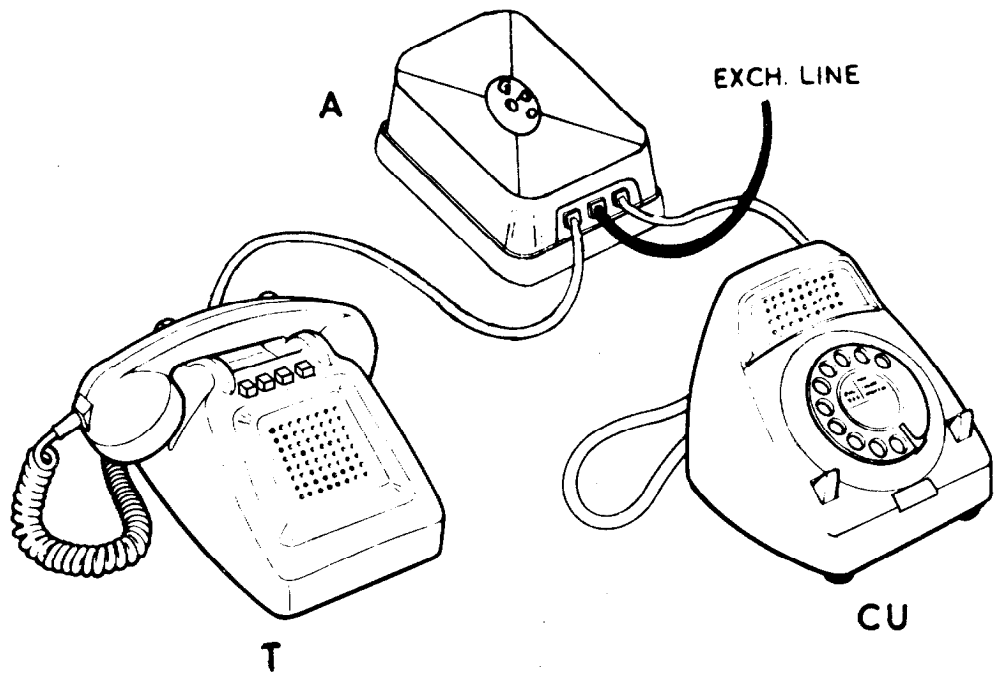
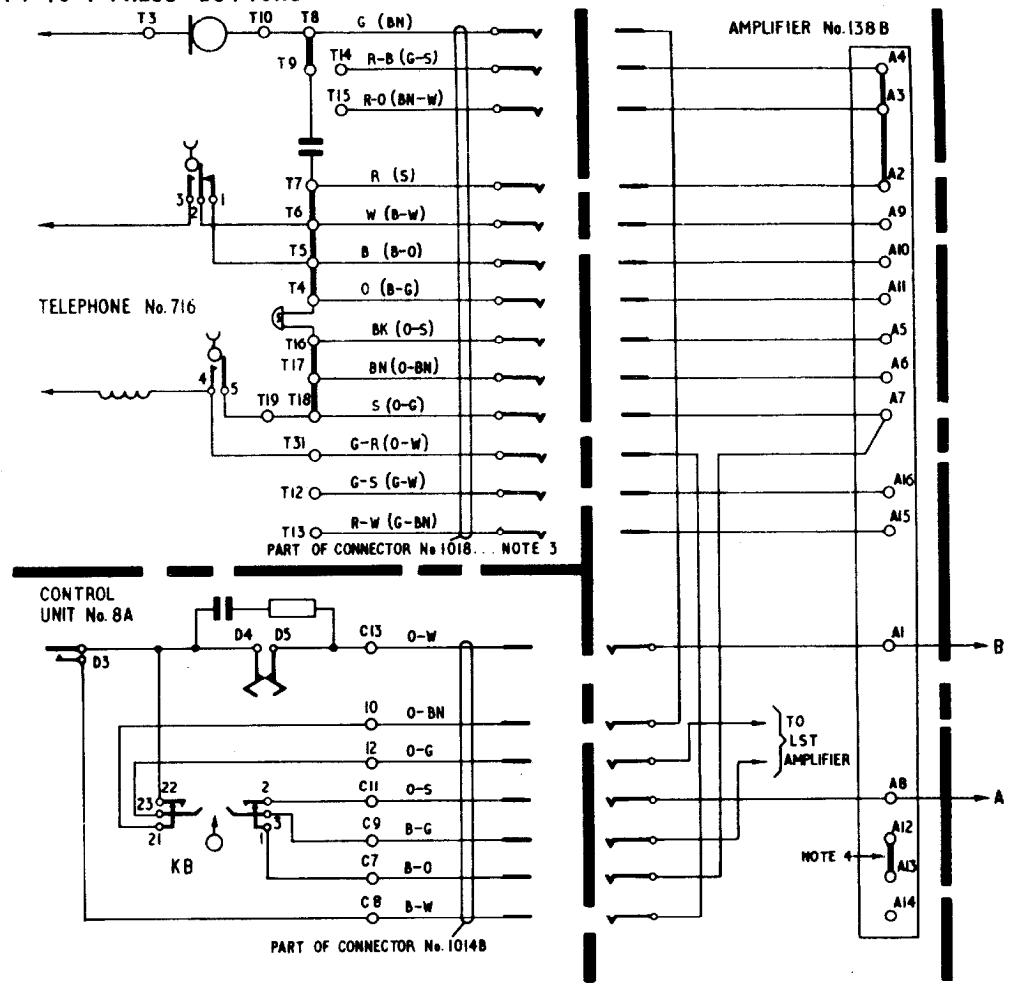


LOUDSPEAKING TELEPHONE No. 1A MK1
TABLE TELEPHONE WITH PROVISION FOR 1 TO 4 PRESS BUTTONS



APPARATUS SCHEDULE		
ITEM	DESCRIPTION	DGM.
A	Amplifier No. 138B	
CU	Control Unit No. 8A with Connector No. 1014B	N4458
T	Telephone No. 716 with Connector No. 1018...	N4452



- NOTES:-
- See T1 C3 B2001 for installation.
See T1 E5 B2802 for maintenance.
 - Extension plan arrangements using Loudspeaking Telephone No. 1A.
See N4484 for Extension Plan No. 1.
See N4487 for Extension Plan No. 1A on 2W PBX with recall.
See N4494 for Extension Plan No. 9.
 - The colours shown are for Connector No. 1018D
The colours shown in brackets refer to Connector No. 1018A
 - The long line / short line strap is issued in the short line position see T1 C3 B2001.

P.O. TELECOMMS. HQRS.			
COLOUR:-W	ISSUE	C Colours of Connector No. 1018D changed. <i>J.I.F.</i>	25.10.78
		B New format. Notes 3 & 4 added. Minor amendments <i>D.F.B.</i>	TD 7-1-2 11.3.76
		A Circulation was special	7.11.67
DISTN:- GENERAL		H. Thwaite	27.8.62