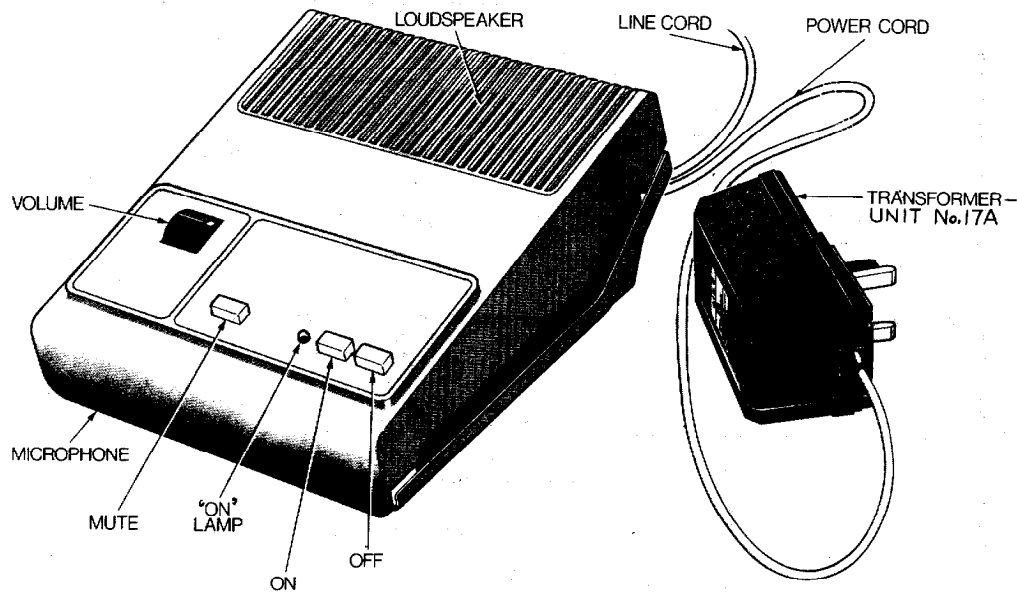


AMPLIFIER AND LOUDSPEAKER No.12A
 USED TO PROVIDE LOUDSPEAKING FACILITIES IN
 CONJUNCTION WITH A TELEPHONE INSTRUMENT



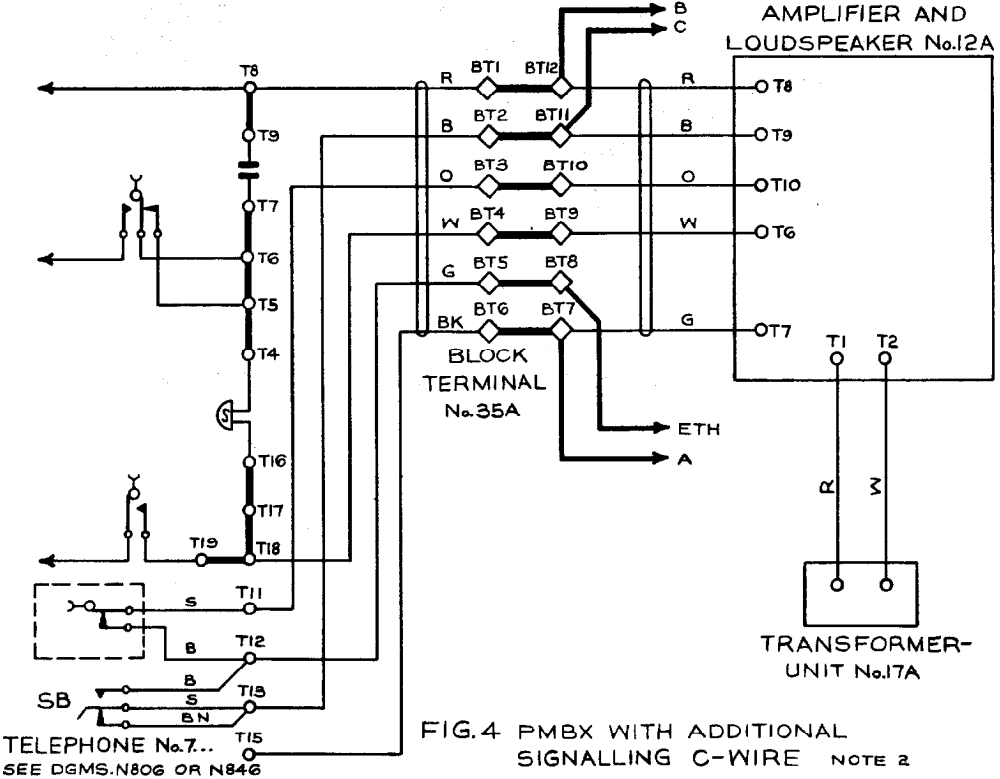
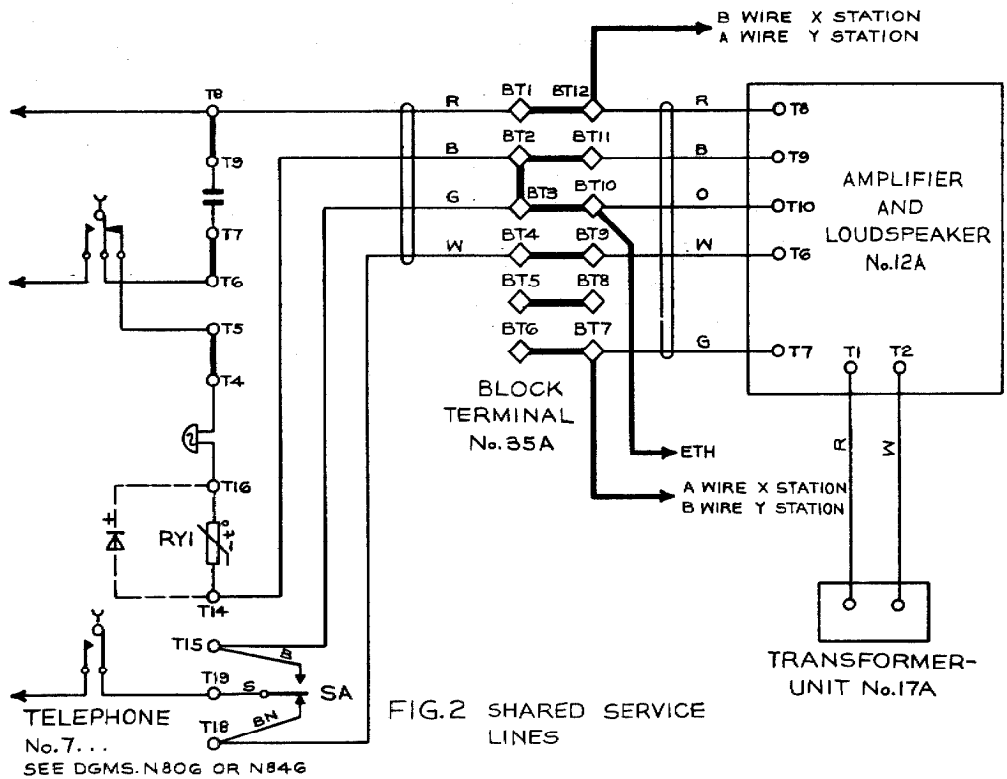
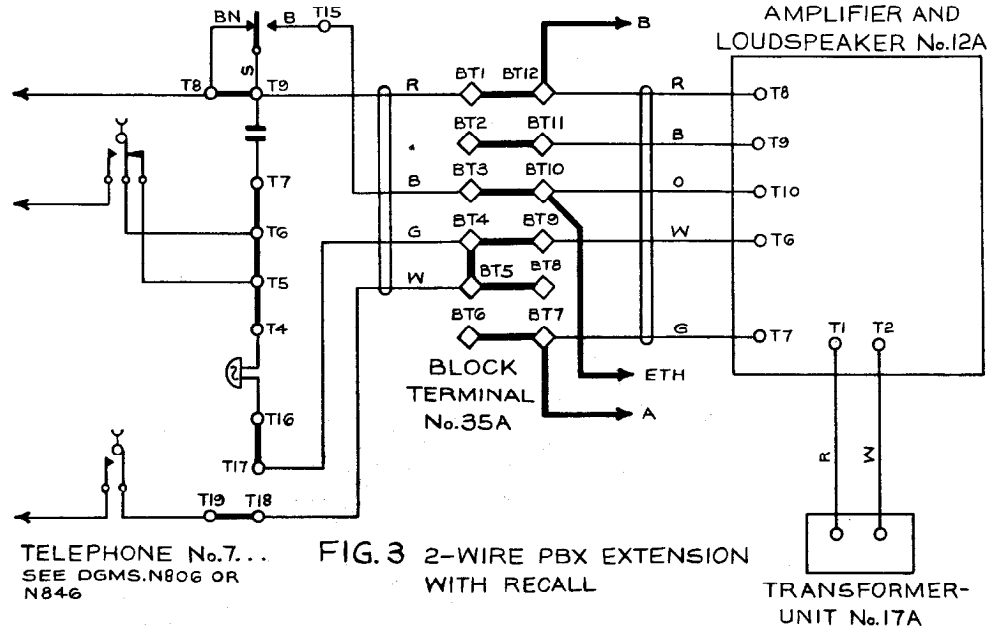
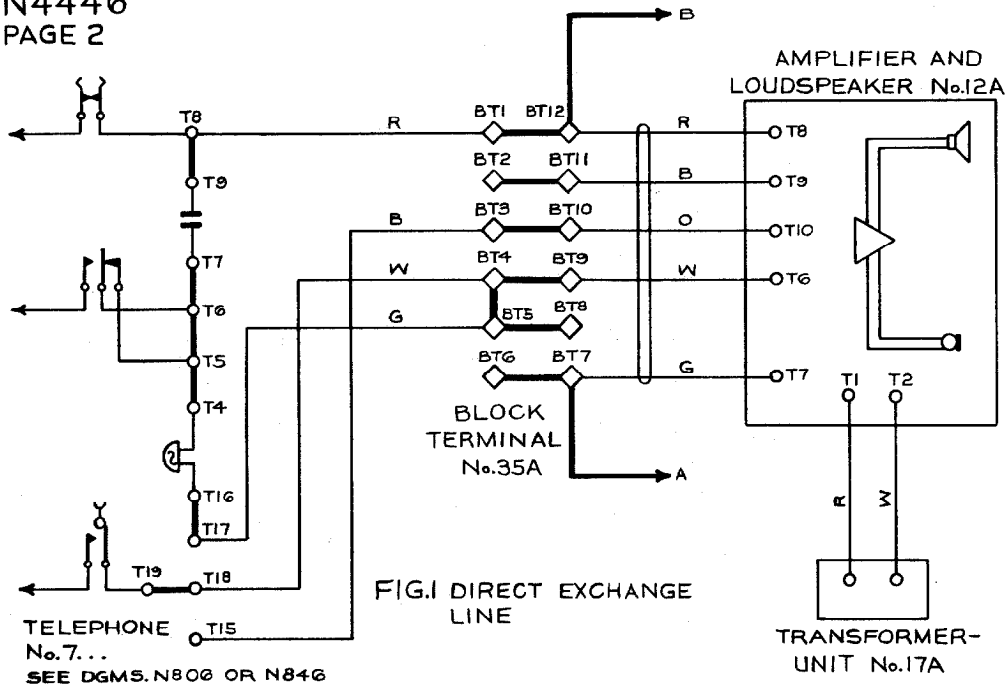
REFERENCES :-

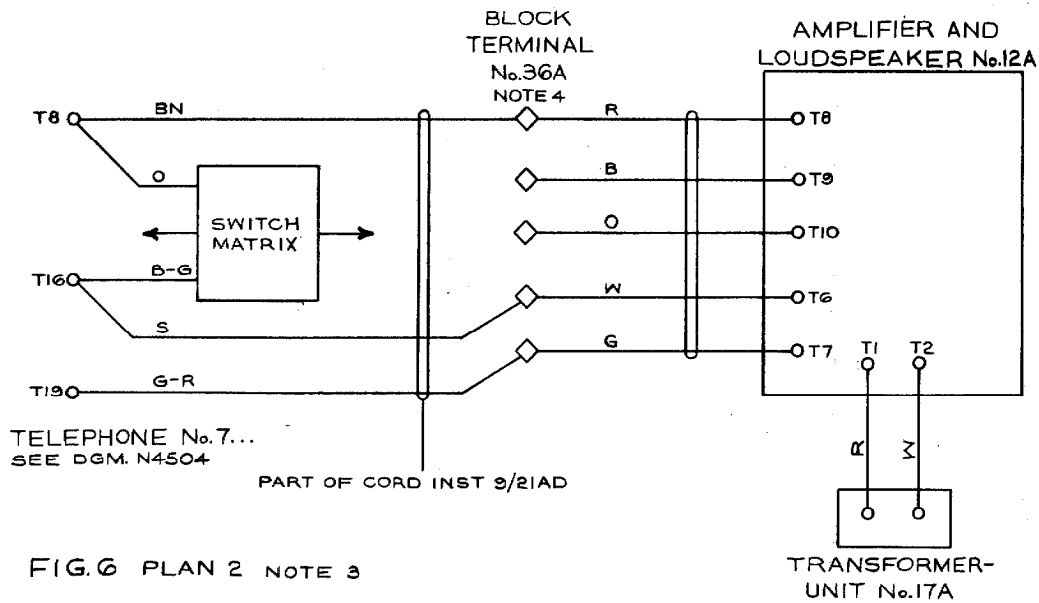
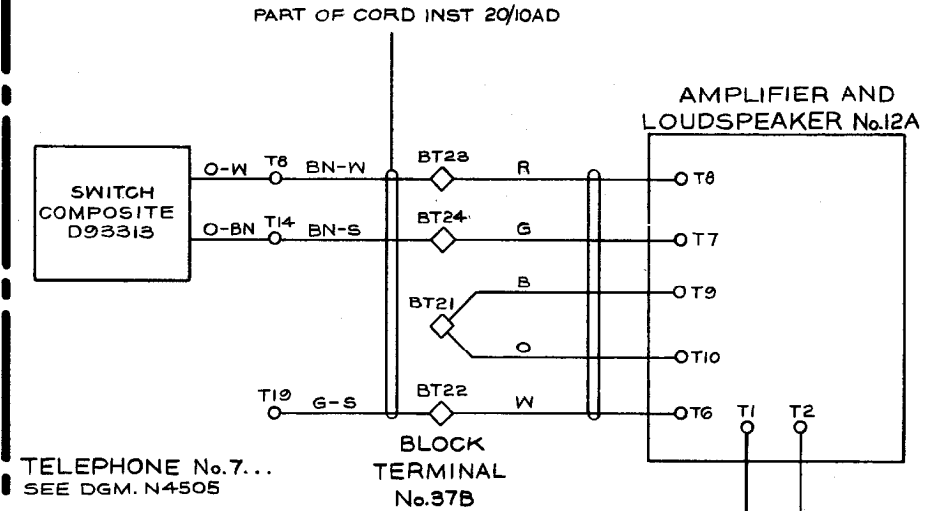
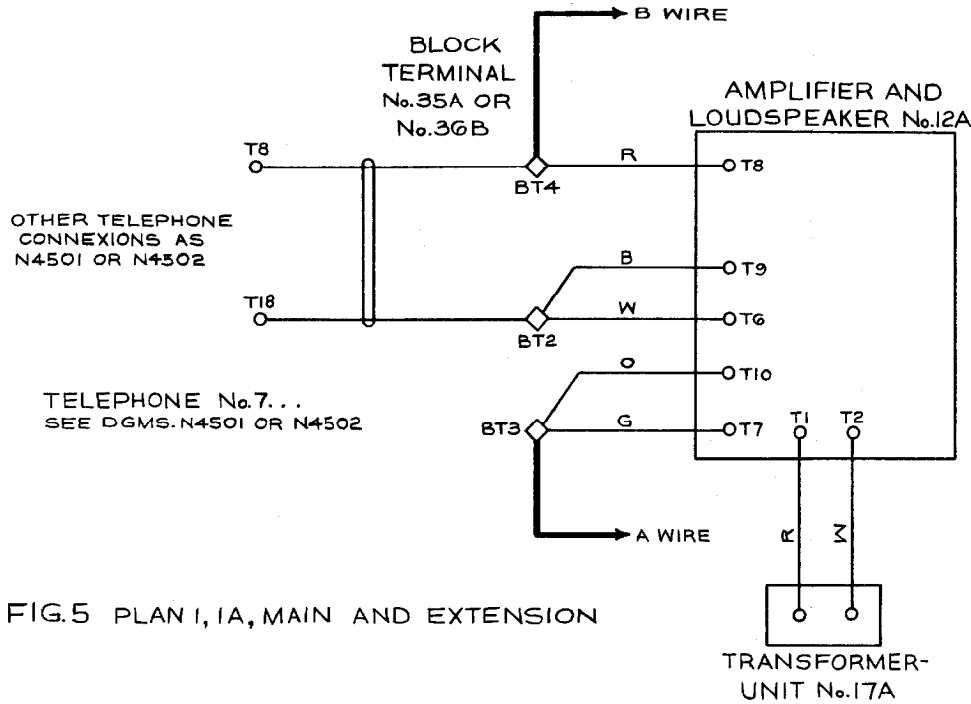
INSTALLATION. TI C3 B2012
 MAINTENANCE. TI E5 F1012

NOTES :-

- 1 THIS N DIAGRAM IS INTENDED TO BE USED IN CONJUNCTION WITH THE N DIAGRAM FOR THE ASSOCIATED TELEPHONE OR PLAN ARRANGEMENT.
- 2 FOR PBX EXTENSION WITH C-WIRE SIGNALLING THE TELEPHONE INSTRUMENT IS WIRED DIFFERENTLY TO THE ASSOCIATED N DIAGRAM.
- 3 PLAN 2 FIG.6 REFERS. THE BLUE AND ORANGE WIRES FROM THE AMPLIFIER AND LOUDSPEAKER ARE SPARE AND SHOULD BE ANCHORED ON SPARE TERMINALS IN THE BLOCK TERMINAL. FIG.6 SHOWS THE CONNEXIONS THAT ARE DIFFERENT FROM THOSE SHOWN IN N4504. ALL OTHERS REMAIN UNCHANGED. A LARGER BLOCK TERMINAL AND 9-WAY CORD WILL BE REQUIRED FOR THE TELEPHONE ASSOCIATED WITH THE AMPLIFIER AND LOUDSPEAKER.
- 4 PLAN 2A FIG.7 SHOWS THE CONNEXIONS THAT ARE DIFFERENT TO N4505. IF MORE THAN ONE AMPLIFIER AND LOUDSPEAKER No.12A IS TO BE FITTED TO THE SAME INSTALLATION, REMOVE THE PERMANENT WIRING FROM TERMINALS 22, 23 AND 24 OF EACH BLOCK TERMINAL AT WHICH AN AMPLIFIER AND LOUDSPEAKER No.12 IS FITTED.
- 5 ON PLAN 4 INSTALLATIONS THE AMPLIFIER AND LOUDSPEAKER No.12A MAY BE PROVIDED AS A FIXED INSTRUMENT AT ANY OF THE STATIONS. AN ADDITIONAL BLOCK TERMINAL No.35A IS REQUIRED WHICH SHOULD BE SITED ALONGSIDE THE JACK No.95A.
- 6 FOR INSTALLATION AT THE MAIN TELEPHONE OF PLAN 105/107 INSTALLATIONS, REMOVE STRAP BETWEEN T18 AND T19 OF THE TELEPHONE. THE AMPLIFIER AND LOUDSPEAKER CORD SHOULD BE FITTED IN PLACE OF THE BUSH 1/DBU/199. THE HANDSET SHOULD BE LEFT OFF-HOOK WHILE THE AMPLIFIER AND LOUDSPEAKER IS IN USE. THE BLUE AND ORANGE WIRES FROM THE AMPLIFIER AND LOUDSPEAKER ARE NOT USED AND SHOULD BE INSULATED
- 7 PLAN 105/107 EXTERNAL EXTENSION. WIRE AND TELEPHONE AS N4507/N4509, CONNECT TELEPHONE AND AMPLIFIER AND LOUDSPEAKER TO BLOCK TERMINAL AS SHOWN IN FIG.12.
- 8 HES. THE STRAP BETWEEN TERMINALS 66 AND 67 SHOULD BE REMOVED AND THE AMPLIFIER AND LOUDSPEAKER CORD CONNECTED AS SHOWN. THE BLUE AND ORANGE CONDUCTORS ARE SPARE AND SHOULD BE ANCHORED ON SPARE TERMINALS WITHIN THE HES TELEPHONE. THE AMPLIFIER AND LOUDSPEAKER CORD SHOULD PASS THROUGH THE HOLE NORMALLY USED FOR A WATCH RECEIVER CORD.

PO TELECOMMS HQRS			
PAPER:- W	ISSUE		
DISTRIBUTION:- GENERAL	<i>M. H. S. C.</i>	ME/PD1.1.2	2.7.80





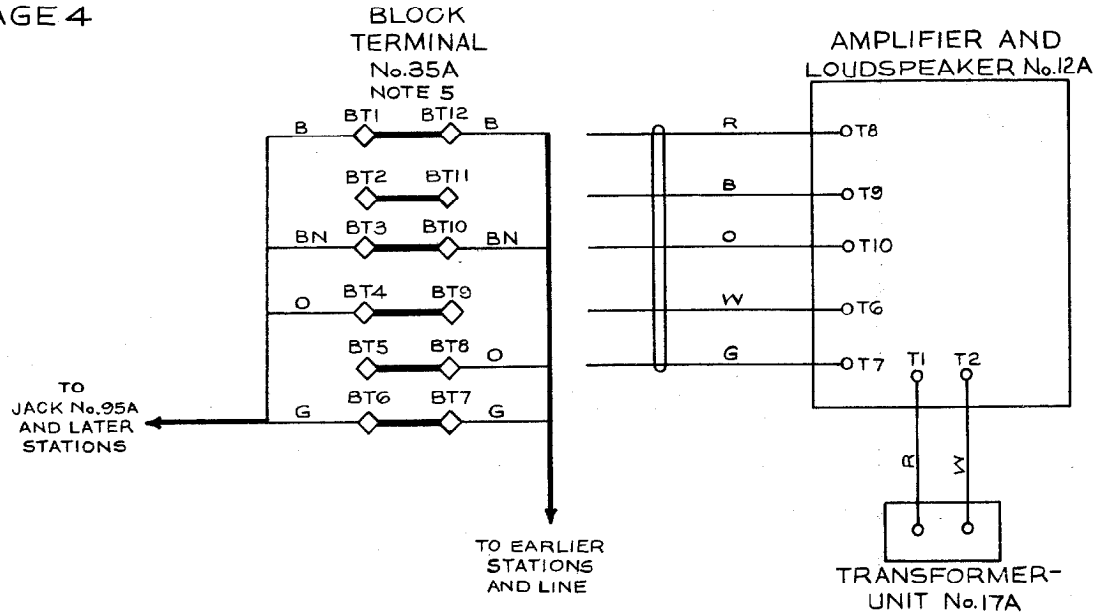


FIG. 8 PLAN 4 ONE TELEPHONE

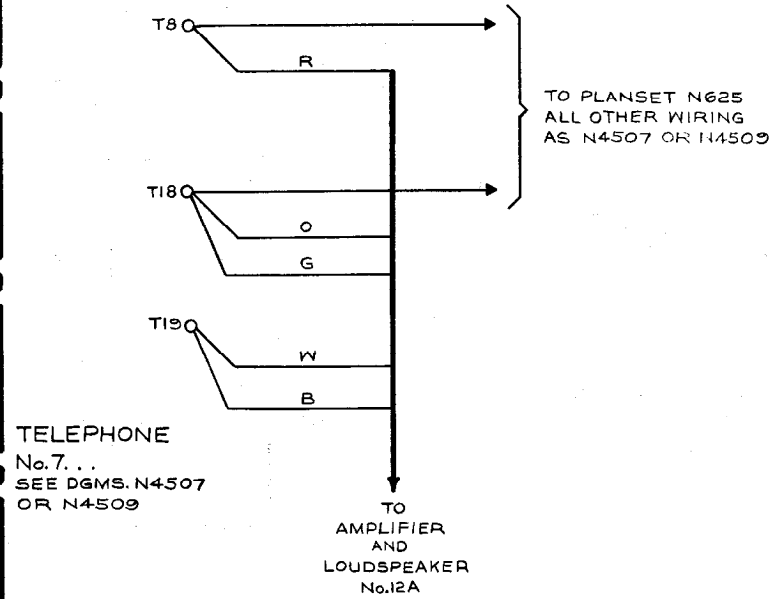


FIG. 10 PLAN 105 OR 107 MAIN TELEPHONE NOTE 6

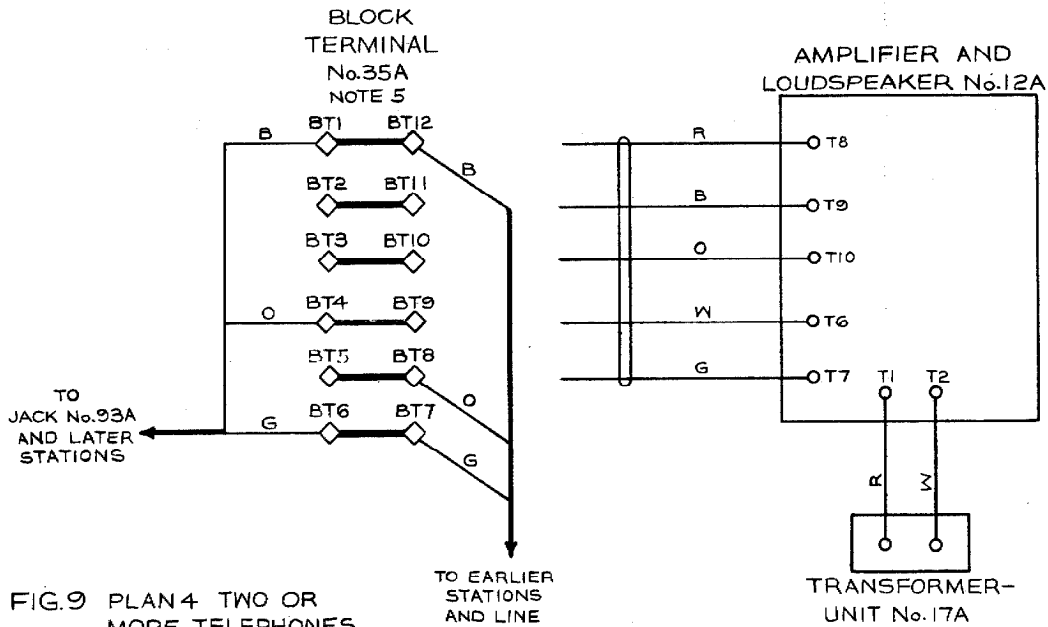


FIG. 9 PLAN 4 TWO OR MORE TELEPHONES

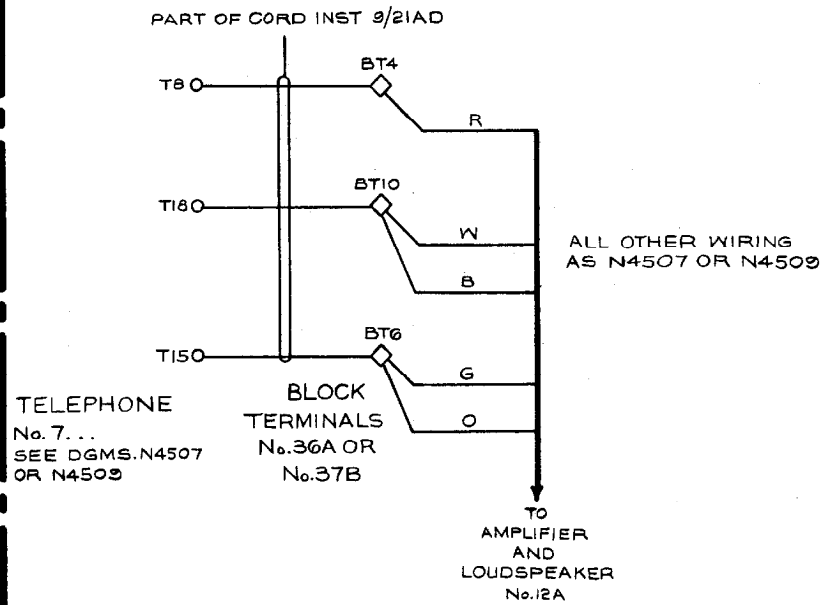


FIG. 11 PLAN 105 OR 107 INTERNAL EXTENSION

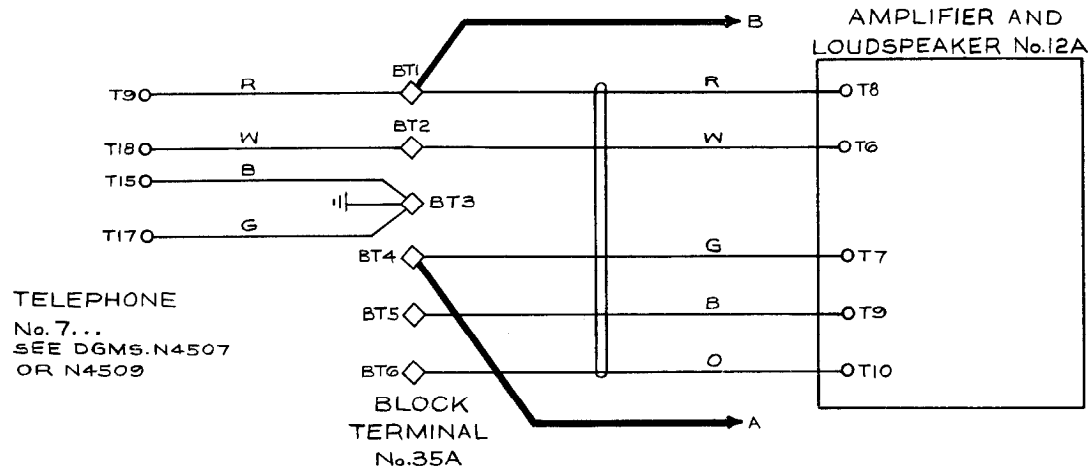


FIG.12 PLAN 105 OR 107 EXTERNAL EXTENSION NOTE 7

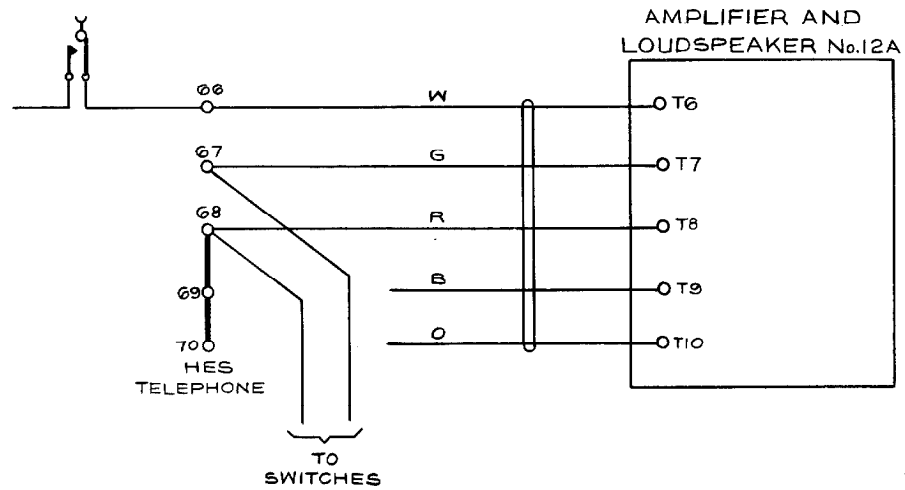


FIG.13 HES NOTE 8