

NOTES:-

AMPLIFIER & LOUDSPEAKER No.4
(SPEAKERSET 1)

MAINS POWERED WAITING AMPLIFIER FOR USE ON
AUTOMATIC AND C.B. SYSTEMS.

1. Telephone No.706 is shown on all diagrams, but any standard facility using this telephone, or an equivalent, may be provided instead. The relevant 'N' diagram should be used in conjunction with this series of diagrams.
2. One Power Unit No.73A should be provided for every two Amplifier and Loudspeaker No.4 provided in Fig.5, except when the cable length between instruments exceeds 12 yards, in which case, one power unit per instrument should be provided.
3. A Resistor, Carbon No.15 GD - 3K (or equivalent) must be provided at all extension Amplifier and Loudspeaker No.4. This is to prevent the customer from being able to turn the overall gain up sufficiently to overhear crosstalk.
4. It should be noted that the Loudspeaker Unit No.3A does not enable extra power to be drawn from the Amplifier and Loudspeaker No.4, it only alters the distribution of the output around the room. Where extra power is required. Fig.4 must be used. The combined length of the Amplifier and Loudspeaker No.4 cord (except when wall-mounted) and the cable to the Loudspeaker Unit No.3A should not exceed 18 yards.
5. For Power Unit No.73A, see Dgm N674.
6. All other cabling to the block terminals in Figs.6 to 11 should be as shown in Fig.5.

7. Apparatus Schedule:-

DESCRIPTION	FIG.1	FIG.2	FIG.3	FIG.4	FIG. 5						
					MAIN		AT EACH EXTN.				
					FIG.6	FIG.7	FIG.8	FIG.9	FIG.10	FIG.11	
Telephone No.706 with Cord, Instrument No.3/108AA and Block, Terminal No.52A	1	1	1	1		1	1				
Amplifier & Loudspeaker No.4	1	1	1	1		1	1	1	1	1	1
Loudspeaker Unit No.3A		1		1						1	1
Power Unit No.73A	1	1	1	1		1	1		NOTE 2		
Block, Terminal No.35A	1		1	1				1	1	1	1
Block, Terminal No.36B		1				1	1				
Cord Instrument No.6/4LAA....	1							1			
Cord Instrument No.9/21AD...		1				1				1	
Resistor Carbon No.15 GD - 3K								1	1	1	1
Kit No.130		1	1	2			1		1	1	2
Plate Mounting No.3A		1	1	2			1		1	1	2

P.O. TELECOMMS HQ PAPER: W CIRCLTN: GENERAL	ISSUE		
		<i>d.b.d</i>	<i>J.S. Gore</i>
		T01.5	7.5.68

FIG. I. TABLE INSTRUMENT AMPLIFIER & LOUSPEAKER No. 4, WITH 700 - TYPE TELEPHONE.

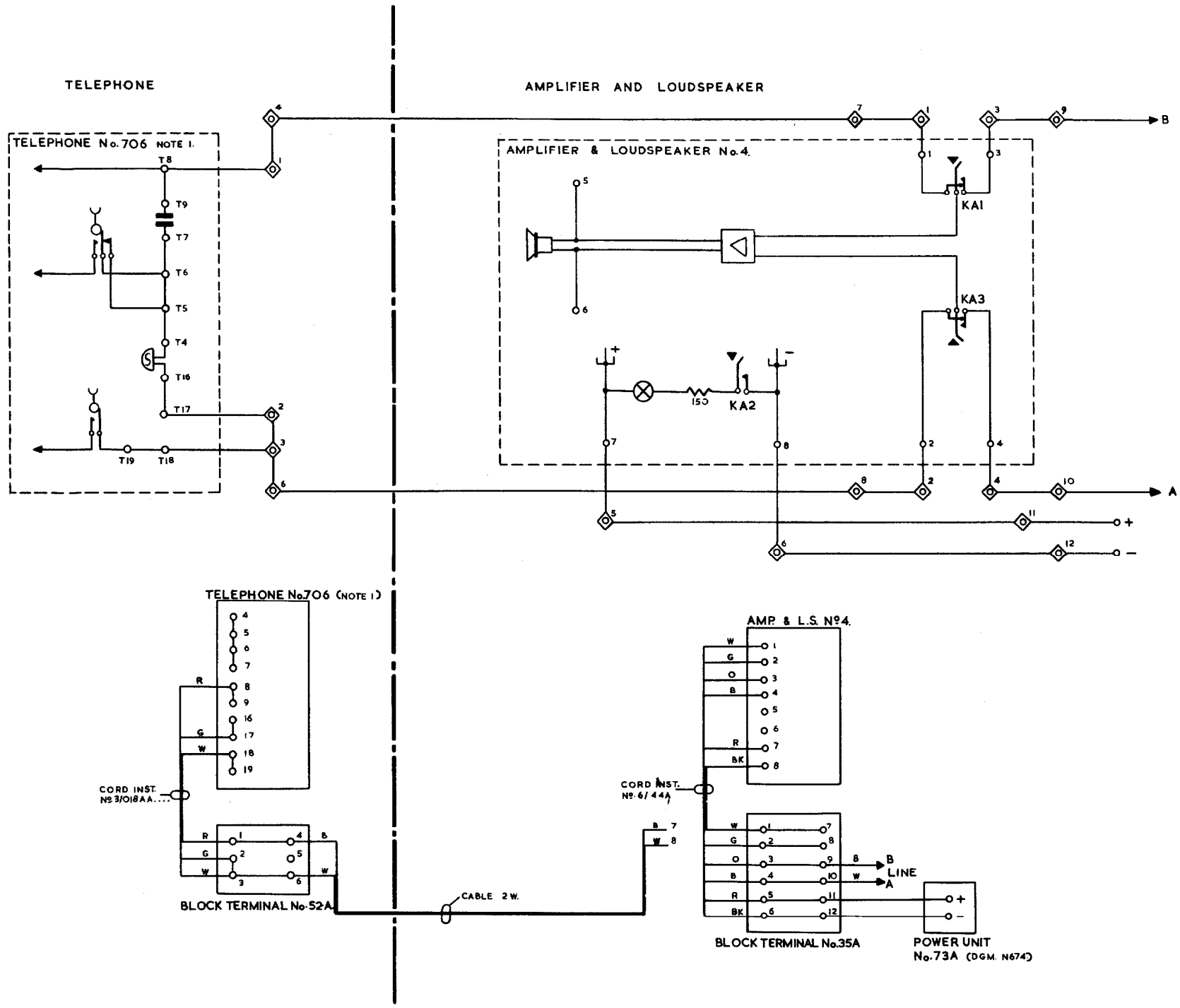


FIG.2. TABLE INSTRUMENT AMPLIFIER & LOUDSPEAKER No.4 WITH
700-TYPE TELEPHONE & WALL MOUNTED LOUDSPEAKER
UNIT No.3 A.

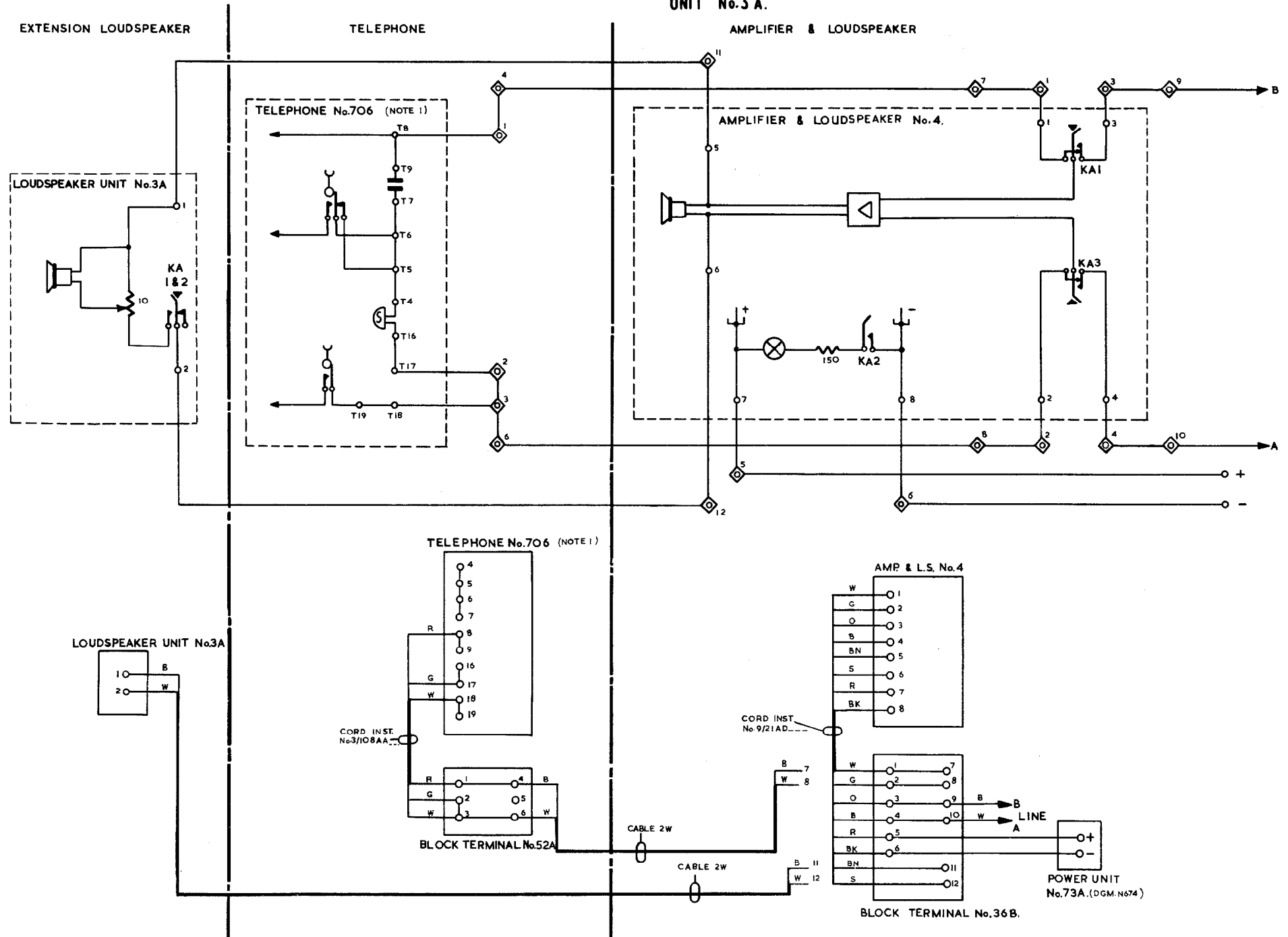


FIG. 3 WALL-MOUNTED AMPLIFIER & LOUDSPEAKER No. 4, WITH 700-TYPE TELEPHONE. (FOR SCHEMATIC SEE FIG 1)

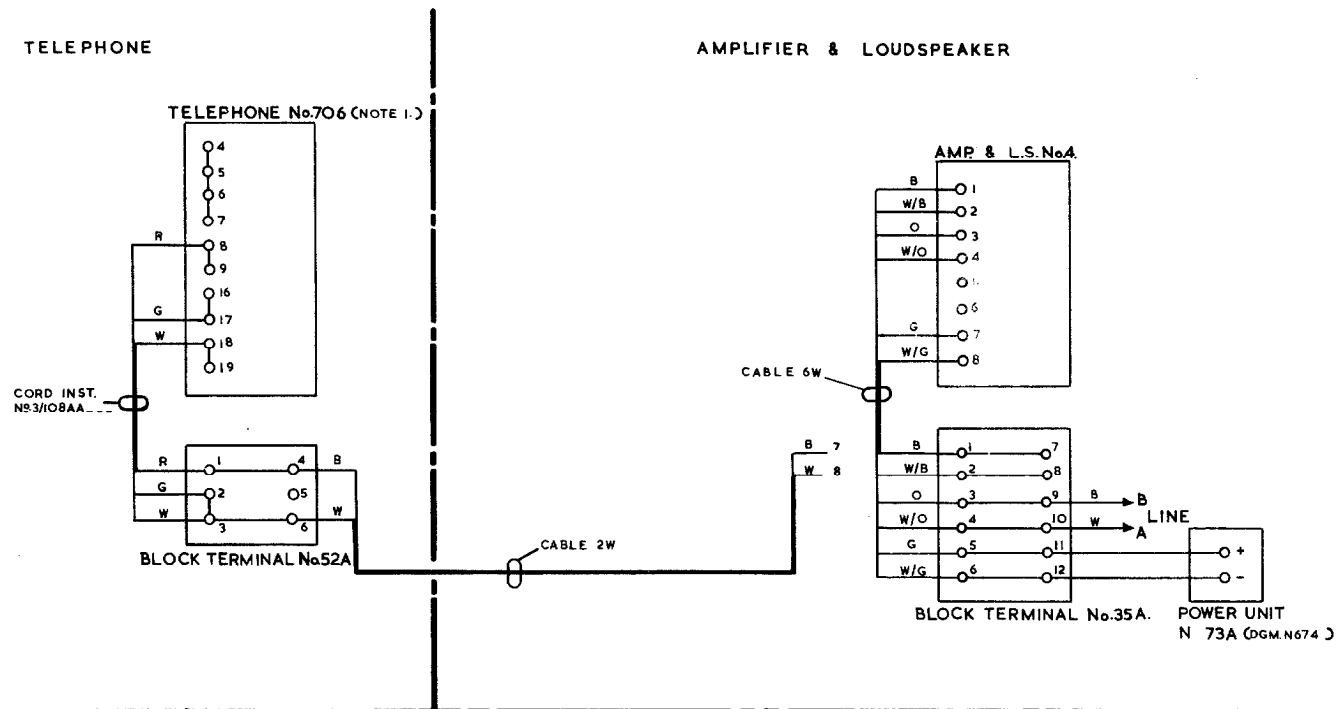


FIG. 4 WALL MOUNTED AMPLIFIER & LOUDSPEAKER No. 4, WITH 700 TYPE TELEPHONE AND WALL MOUNTED LOUDSPEAKER UNIT No. 3A. (FOR SCHEMATIC SEE FIG. 2.)

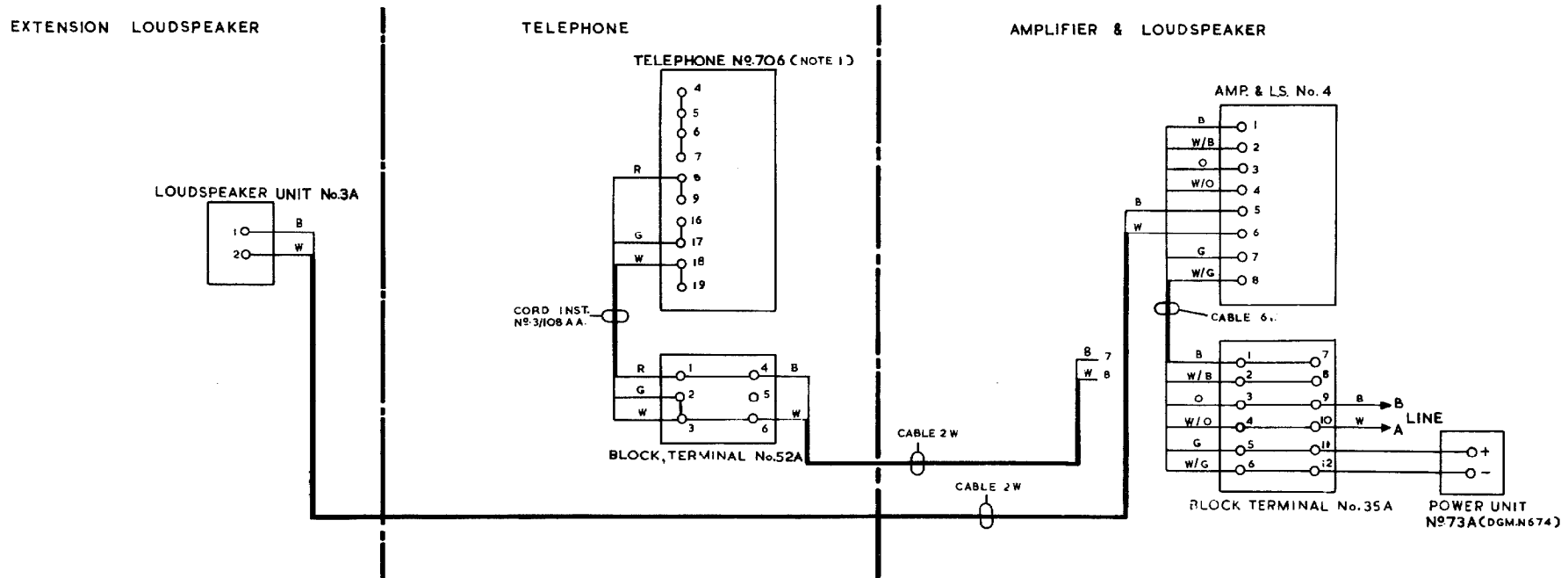


FIG. 5 TWO OR MORE AMPLIFIERS & LOUDSPEAKERS No. 4
ON ONE LINE WITH ONE 700-TYPE TELEPHONE

