

# VIEWDATA SERVICE (INCLUDING PRESTEL)

## METHODS OF CONNECTION TO THE PUBLIC TELEPHONE SERVICE

N4410

PAGE 1-8

### CONTENTS

GENERAL NOTES

WIRING DIAGRAMS:

DIRECT EXCHANGE LINE,

Using Telephone Nos 706, 722, 746  
Using Telephone No. 711  
Using Telephone No. 713  
Other (NOTE 4)

FIG.

1A \*  
1B \*  
1C  
7

DEL WITH PLAN EXTENSION, (NOTE 3)

Plan 1A  
Plan 4  
Plan 105/107

2A  
2B  
2C

DIRECT PBX EXTENSION WITH RECALL (2 wire),

Using Telephone Nos 706, 722, 746  
Using Telephone No. 711  
Using Telephone No. 713

3A \*  
3B \*  
3C

DIRECT PBX EXTENSION WITH RECALL (Additional "C" wire)

Using Telephone Nos 706, 722, 746  
Using Telephone No. 713  
Using Telephone No. 711

4A \*  
4B \*  
4C

PBX EXTENSION WITH PLAN NO., (NOTE 3)

Plan 1A (2 wire)  
Plan 1A ("C" wire)  
  
Plan 4 (1 portable telephone)  
Plan 4 (2 or more telephones)

5A  
5B  
  
6A  
6B

CABLE INTERCEPTION (NOTE 4)

7

\* Includes Keypad versions, eg, 764, 766, 772

### GENERAL NOTES

1. VIEWDATA service is provided by means of a connection point (Jack No. 96A) for a "permitted attachment" added to an existing telephone service.

Where a completely new installation is to be provided, it should be wired to the relevant "N" diagram for the telephone facilities required and modified (according to the appropriate figure of this diagram) for the addition of VIEWDATA service.

2. VIEWDATA service is available as a standard addition to the telephone arrangements shown in this diagram. It should not be provided on other arrangements without special instructions. It MUST NOT be applied to SHARED SERVICE exchange lines.

3. On Plan No. extension arrangements, VIEWDATA service must be connected at the MAIN station. When the VIEWDATA terminal is to be sited at an extension position, the Jack No. 96A must be cabled directly from the MAIN station.

4. FIGURE 7 should be used on all installations of Telephones No. 776, 2-SAL271/1 or "Special Range". It is also applicable, in certain special circumstances, to other arrangements shown in this diagram; these are indicated in the NOTES for the figures concerned. It should not be used unless the specified conditions apply.

5. Jacks No. 96A, provided as connection points for VIEWDATA service should be marked with the special self-adhesive label provided to distinguish them from other jacks (Nos 95 or 96) which may form part of the telephone installation.

6. LIGHTNING PROTECTORS MUST BE FITTED IN ACCORDANCE WITH T.I. C3S 9001.

PO TELECOMMS HQRS. PAPER :- WHITE DISTN :- GENERAL	ISSUE			
	A	FIGS 6A AND 6B - CONNECTIONS REARRANGED	G.D.	28-9-79
			SV 11-4-2	12.3.79

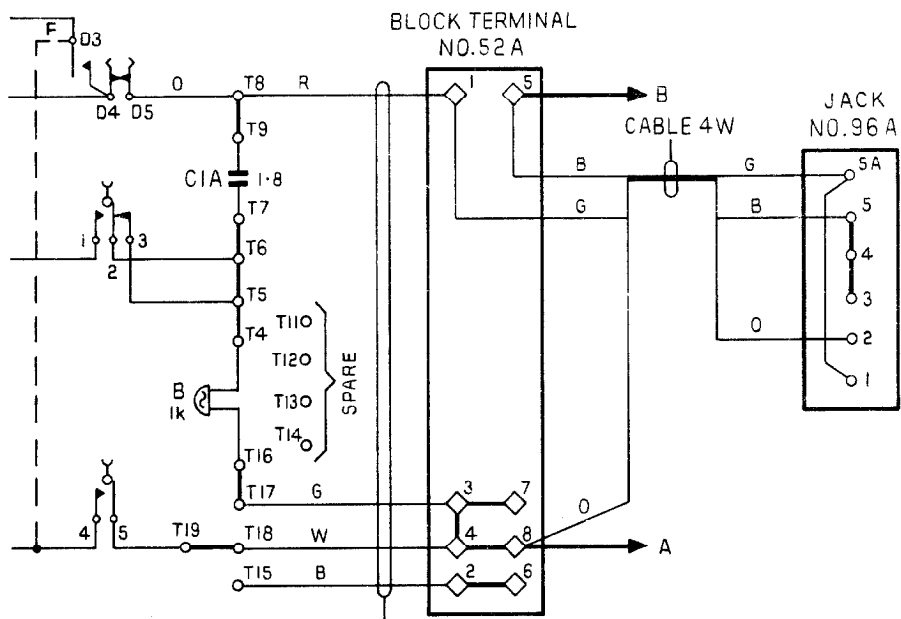


FIG. 1A - DEL USING TELEPHONE NOS 706, 722, 746

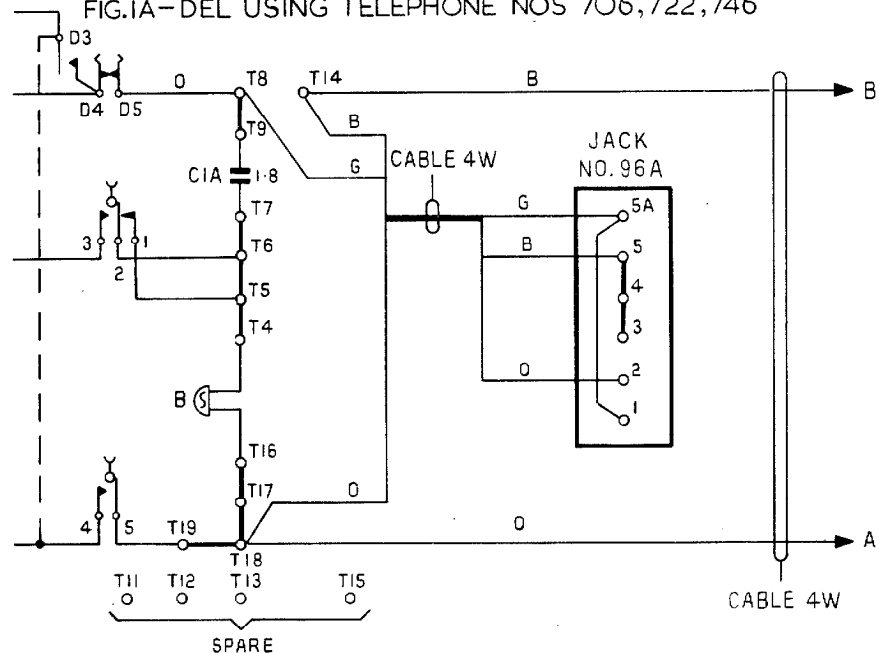


FIG. 1B - DEL USING TELEPHONE NO. 711

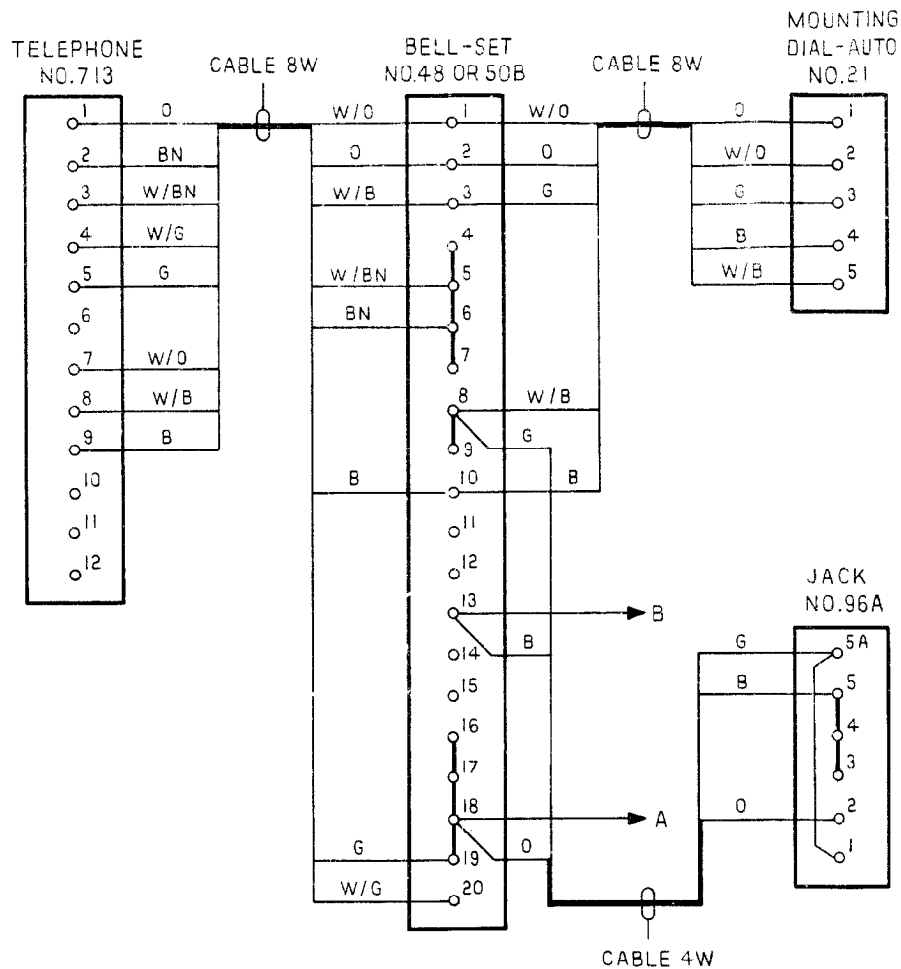


FIG. 1C - DEL USING TELEPHONE NO. 713

NOTES:

- ON INSTALLATIONS USING OTHER TYPES OF TELEPHONE (E.G., NO. 776, 2-SA 4 271/1 OR "SPECIAL RANGE") DO NOT USE FIG. 1 BUT WIRE TO FIG. 7
- FOR AN INSTALLATION REQUIRING, FIG. 1A REMOVE EXISTING STRAP FROM BLOCK TERMINAL NO. 52A, TERMINALS 1-5; ADD NEW WIRING AS SHOWN FOR JACK NO. 96A FIG. 1B SHIFT B (LINE) WIRE FROM T8 TO T14; ADD NEW WIRING AS SHOWN FOR JACK NO. 96A FIG. 1C SHIFT B (LINE) WIRE FROM TERMINAL 8 TO TERMINAL 13 OF BELL-SET; ADD NEW WIRING AS SHOWN FOR JACK NO. 96A

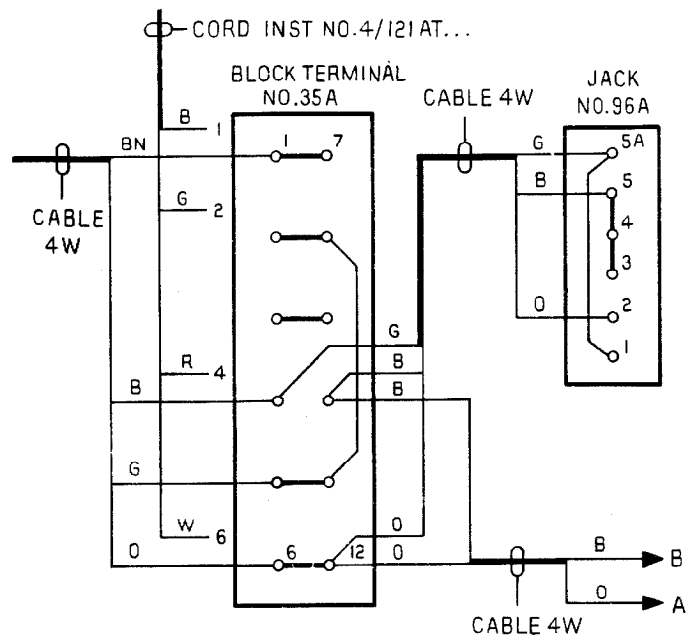


FIG. 2A-PLAN 1A (MAIN)

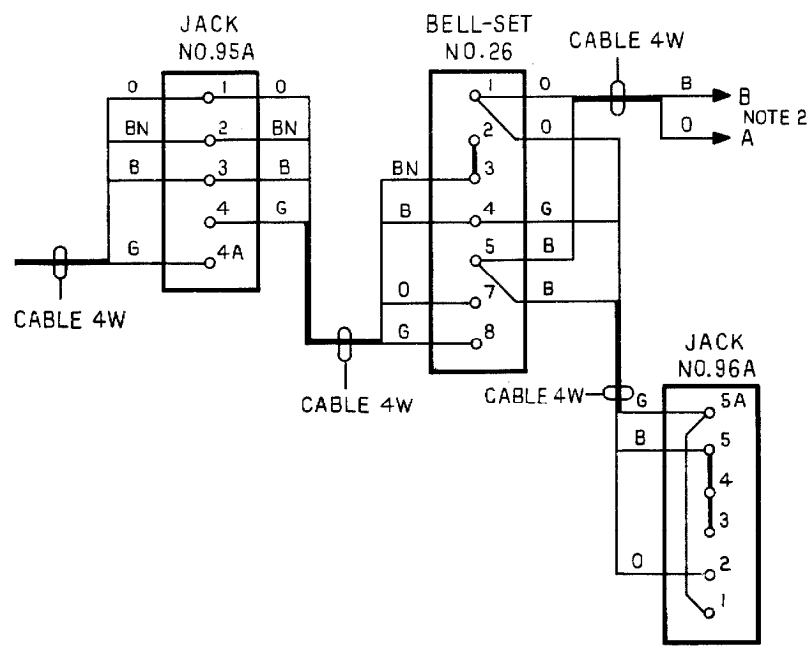


FIG. 2B-PLAN 4 (MAIN)

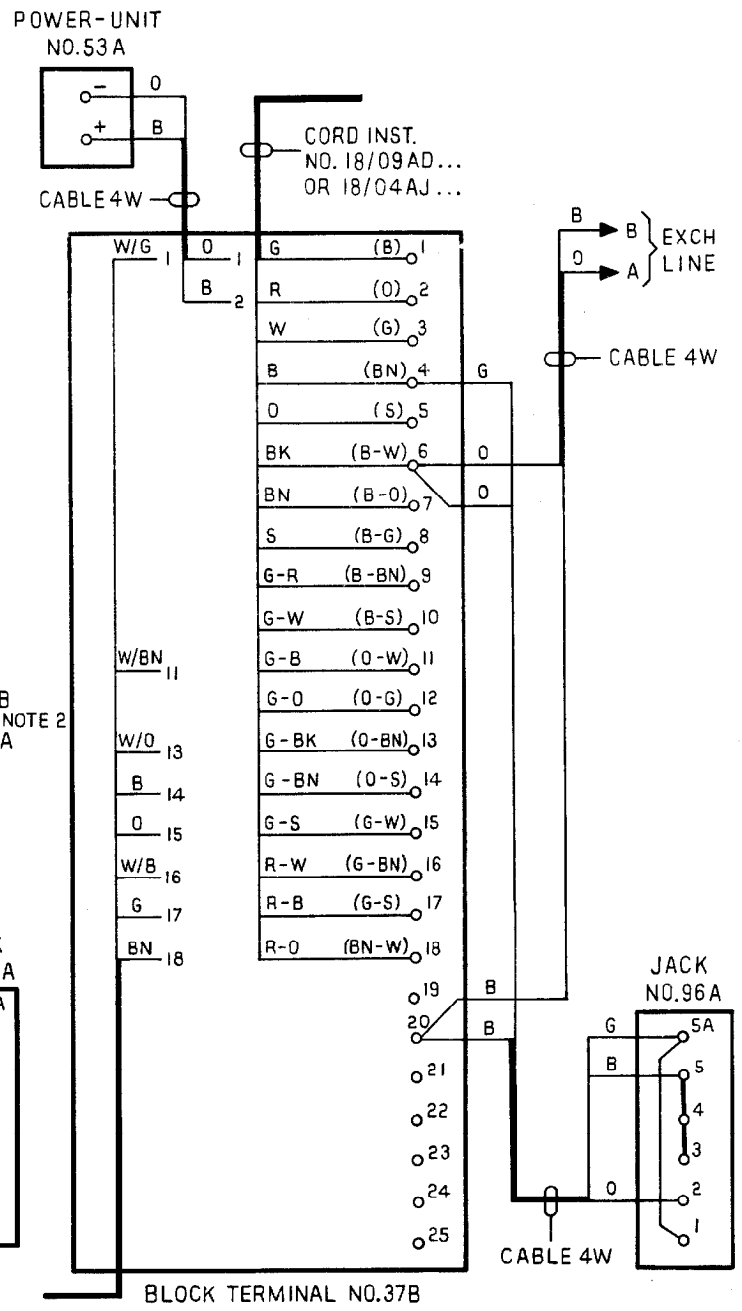


FIG. 2C-PLAN 105/107 (MAIN)

- NOTES :-
1. VIEWDATA SERVICE MUST BE CONNECTED AT THE MAIN STATION. WHEN THE VIEWDATA TERMINAL IS TO BE SITED AT AN EXTENSION POSITION, CABLE DIRECTLY FROM THE MAIN
  2. WHEN THE EXCHANGE LINE WIRES ARE CONNECTED TO ONE OF THE JACKS OF A PLAN 4 INSTALLATION, WIRE TO FIG. 7 INSTEAD OF FIG. 2B
  3. FOR AN INSTALLATION REQUIRING, FIG. 2A REMOVE EXISTING STRAP FROM BLOCK, TERMINAL NO. 35A, TERMINALS 4 -10; ADD NEW WIRING AS SHOWN FOR JACK NO.96A FIG. 2B REMOVE EXISTING STRAP FROM TERMINALS 4-5 OF BELL-SET; ADD NEW WIRING AS SHOWN FOR JACK NO. 96A FIG. 2C SHIFT B (LINE) WIRE FROM TERMINAL 4 TO TERMINAL 20 OF BLOCK, TERMINAL NO.37B; ADD NEW WIRING AS SHOWN FOR JACK NO.96A

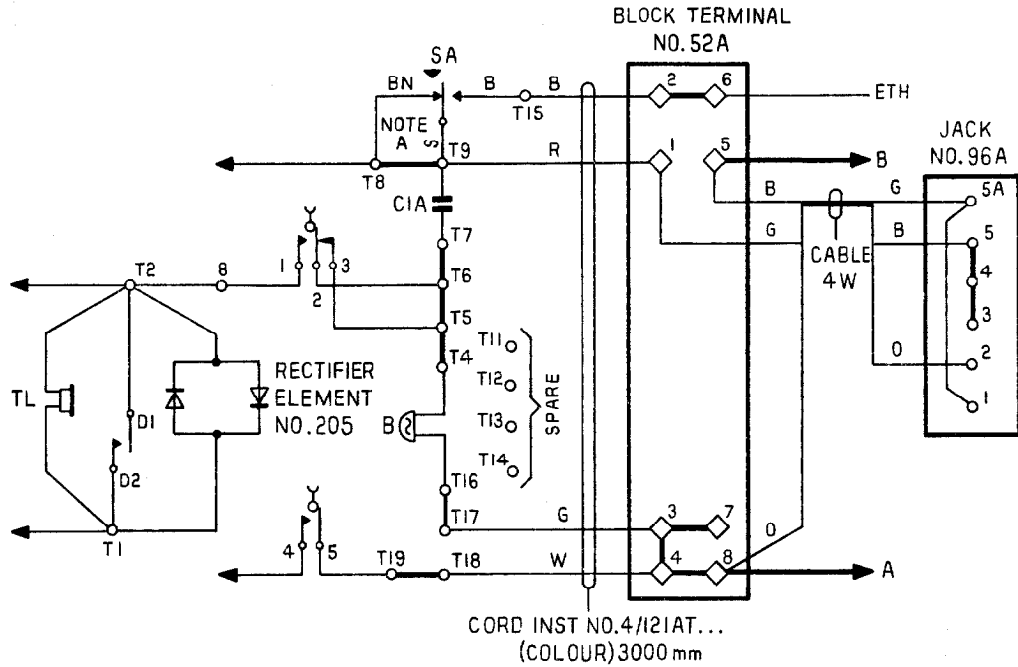


FIG. 3A - 2 WIRE PBX EXTENSION USING TELEPHONE NOS 706, 722, 746

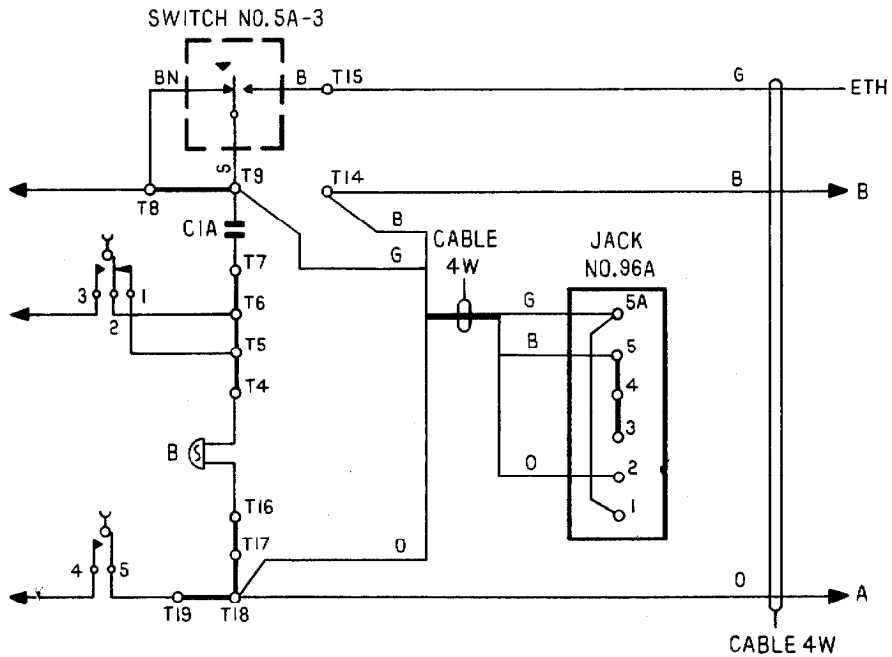


FIG. 3B - 2 WIRE PBX EXTENSION USING TELEPHONE NO. 711

WIRING

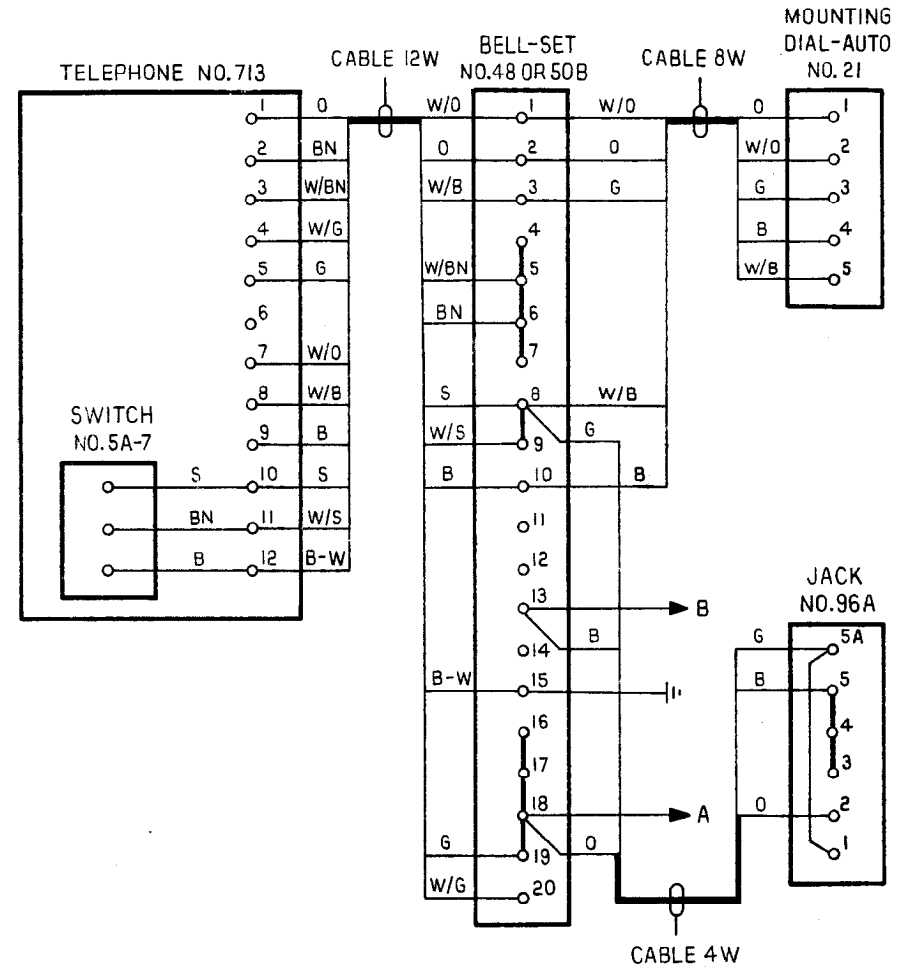


FIG. 3C - 2 WIRE PBX EXTENSION USING TELEPHONE NO. 713

NOTES:

1. FOR AN INSTALLATION REQUIRING, FIG. 3A  
REMOVE EXISTING STRAP FROM BLOCK, TERMINAL NO. 52A, TERMINALS 1-5;  
ADD NEW WIRING AS SHOWN FOR JACK NO. 96A
- FIG. 3B  
SHIFT B (LINE) WIRE FROM T9 TO T14 ; ADD NEW WIRING AS SHOWN  
FOR JACK NO. 96A
- FIG. 3C  
SHIFT B (LINE) WIRE FROM TERMINAL 9 TO TERMINAL 13 OF BELL-SET;  
ADD NEW WIRING AS SHOWN FOR JACK NO. 96A

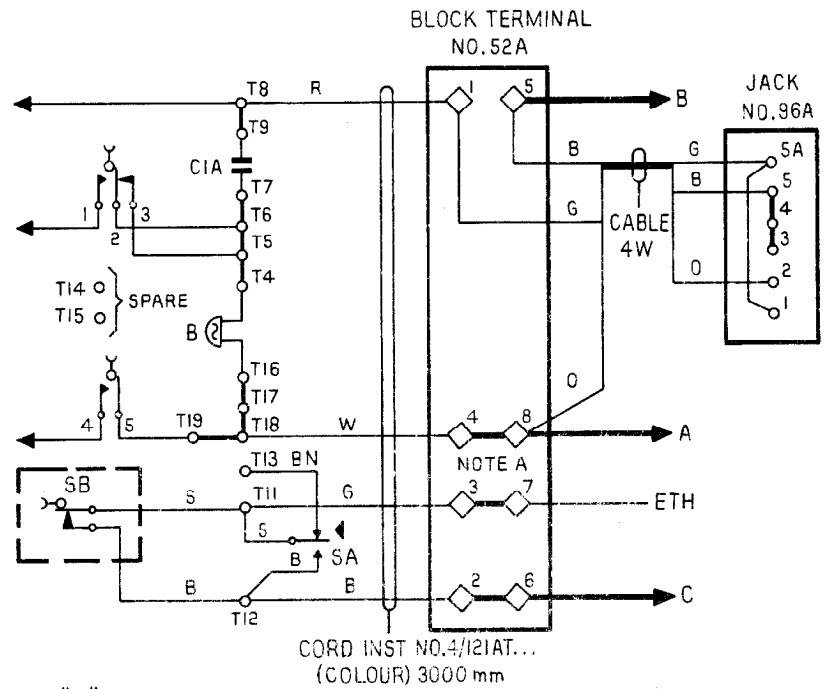


FIG. 4A - "C" WIRE PBX EXTENSION USING TELEPHONE NOS 706,722,746

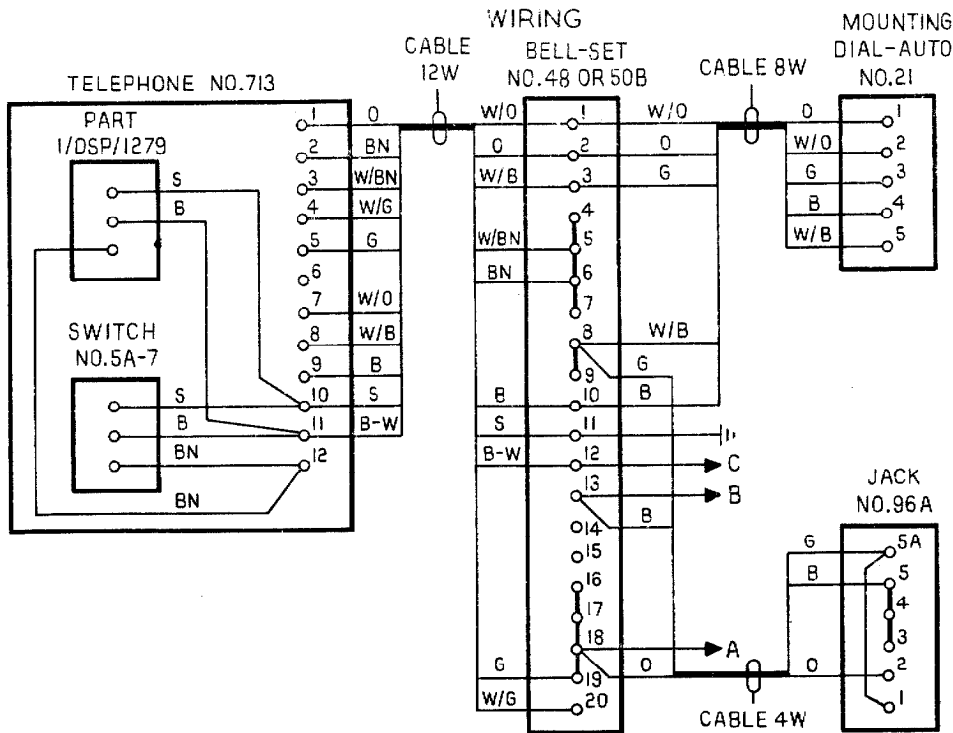


FIG. 4B - "C" WIRE PBX EXTENSION USING TELEPHONE NO. 713

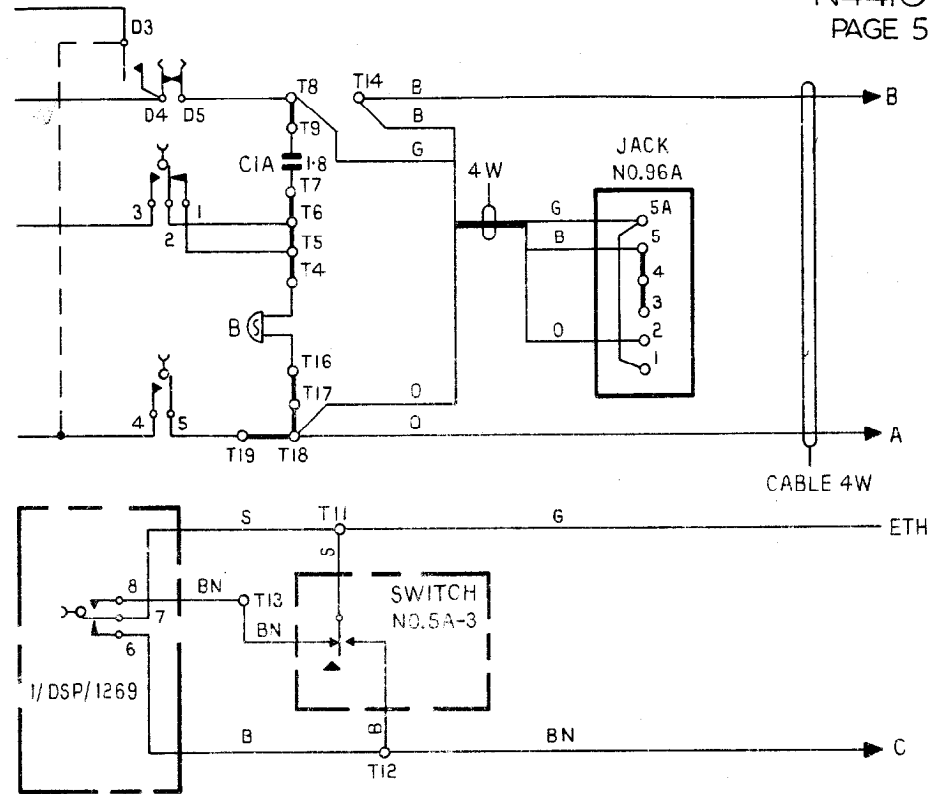


FIG. 4C - "C" WIRE PBX EXTENSION USING TELEPHONE NO. 711

NOTE :

- FOR AN INSTALLATION REQUIRING, FIG. 4A  
REMOVE EXISTING STRAP FROM BLOCK, TERMINAL NO. 52A, TERMINALS 1-5;  
ADD NEW WIRING AS SHOWN FOR JACK NO. 96A .  
FIG. 4B  
SHIFT B (LINE) WIRE FROM TERMINAL 9 TO TERMINAL 13 OF BELL -SET ; ADD  
NEW WIRING AS SHOWN FOR JACK NO. 96A .  
FIG. 4C  
SHIFT B (LINE) WIRE FROM T8 TO T14 ; ADD NEW WIRING AS SHOWN FOR  
JACK NO. 96A

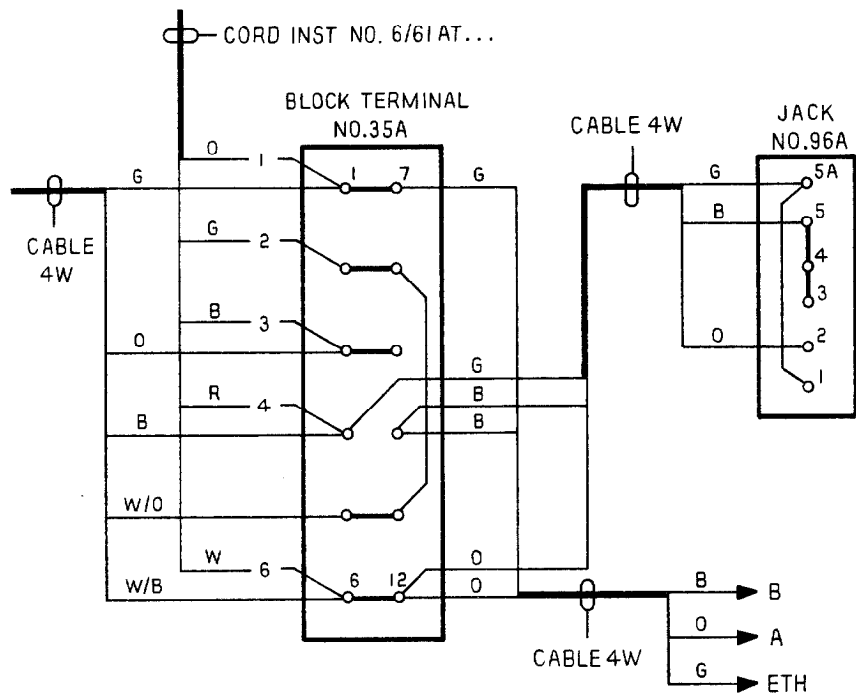


FIG. 5A - 2 WIRE EXTENSION WITH PLAN IA

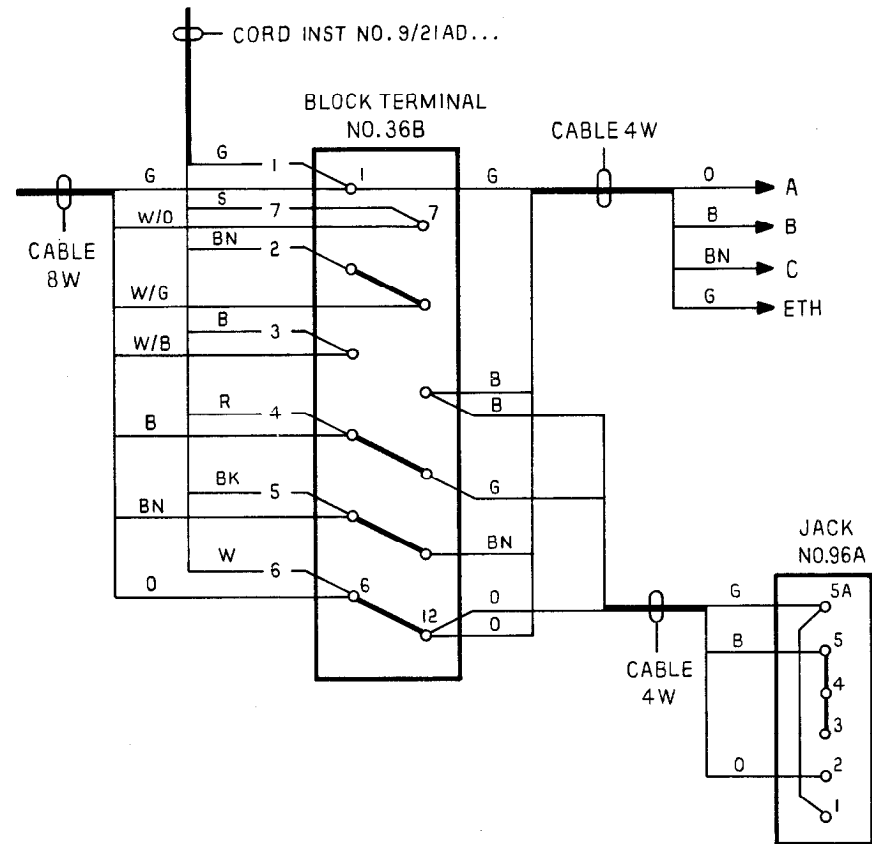


FIG. 5B - "C" WIRE EXTENSION WITH PLAN IA

NOTES:

1. VIEWDATA SERVICE MUST BE CONNECTED AT THE MAIN STATION. WHEN THE VIEWDATA TERMINAL IS TO BE SITED AT AN EXTENSION POSITION, CABLE DIRECTLY FROM THE MAIN.
2. FOR AN INSTALLATION REQUIRING, FIG. 5A  
REMOVE STRAP ON BLOCK, TERMINAL NO. 35A, TERMINALS 4-10; ADD NEW WIRING AS SHOWN FOR JACK NO. 96A  
FIG. 5B  
SHIFT B (LINE) WIRE FROM BLOCK, TERMINAL NO. 36B, TERMINAL 10 TO TERMINAL 9;  
ADD NEW WIRING AS SHOWN FOR JACK NO. 96A.

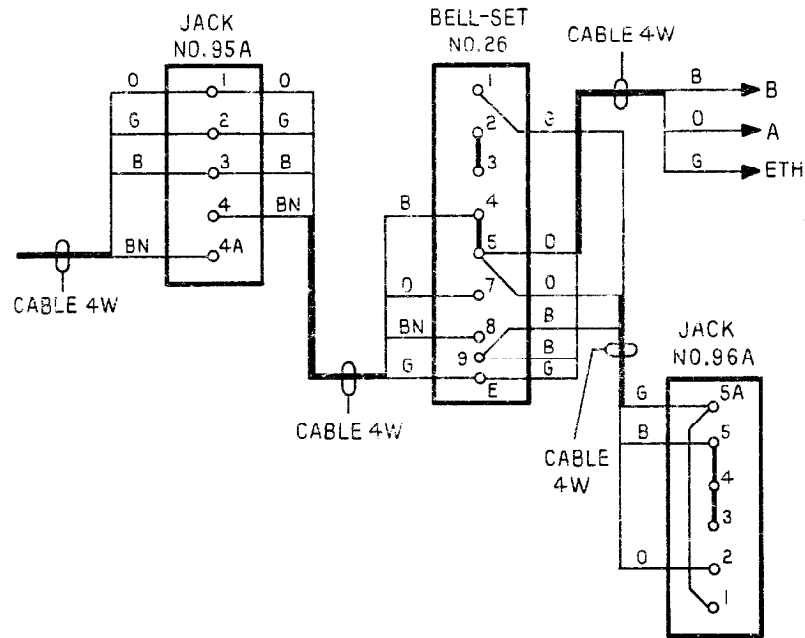


FIG. 6A — 2 WIRE EXTENSION WITH PLAN 4 (1 TELEPHONE)

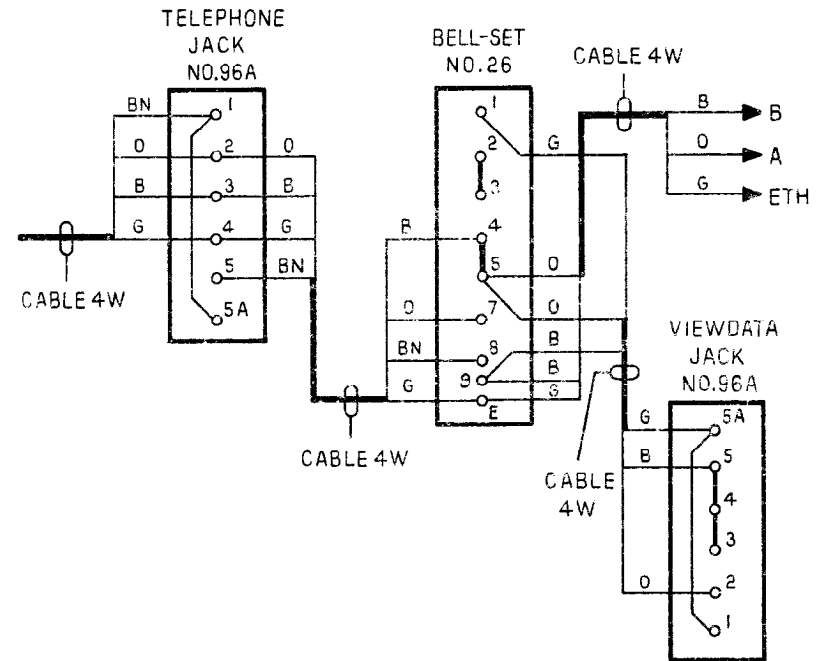


FIG. 6B — 2 WIRE EXTENSION WITH PLAN 4 (2 OR MORE TELEPHONES)

NOTES :

1. WHEN THE EXTENSION LINE WIRES ARE CONNECTED TO ONE OF THE JACKS OF A PLAN 4 INSTALLATION INSTEAD OF TO THE BELL-SET, WIRE THE VIEWDATA JACK NO. 96A TO FIG. 7 INSTEAD OF FIG. 6A OR 6B
2. FOR AN INSTALLATION REQUIRING EITHER FIG. 6A OR 6B, SHIFT B (LINE) WIRE ON BELLSET FROM B1 TO B9; ADD NEW WIRING AS SHOWN FOR JACK NO. 96A

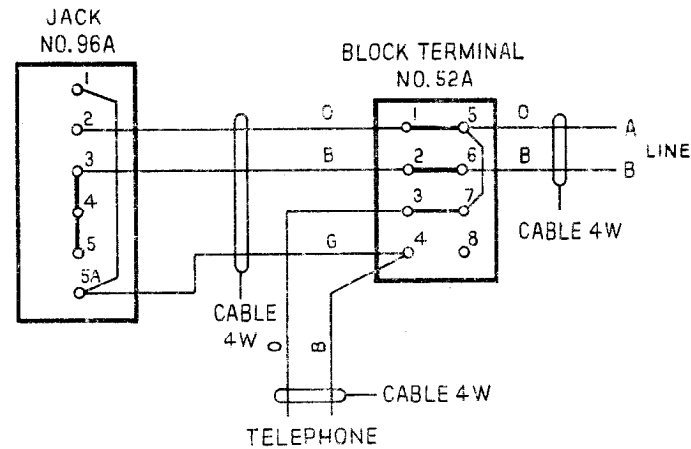


FIG.7 - CABLE INTERCEPTION

NOTES :

1. FIG. 7 SHOULD BE USED ON ALL INSTALLATIONS OF TELEPHONES NO. 776, 2-SA4271/1 OR "SPECIAL RANGE." IT IS ALSO APPLICABLE, IN CERTAIN SPECIAL CIRCUMSTANCES, TO OTHER ARRANGEMENTS; THESE ARE INDICATED IN THE NOTES FOR THE FIGURES CONCERNED. FIG. 7 SHOULD NOT BE USED UNLESS THE SPECIFIED CONDITIONS APPLY.
2. FIG. 7 REQUIRES THAT THE EXCHANGE (OR EXTENSION) LINE WIRES TO BE INTERCEPTED BETWEEN THE "LEAD-IN" (OR EQUIVALENT) AND THE TELEPHONE SYSTEM. THE INTERCEPTION SHOULD BE MADE AT A CONVENIENT AND UNOBTRUSIVE POSITION IN THE CABLE RUN, A BLOCK TERMINAL NO. 52A WIRED AS SHOWN AND SEPARATE CABLING PROVIDED AS REQUIRED, BOTH FOR THE VIEWDATA JACK NO. 96A AND FOR THE TELEPHONE SYSTEM, IF NECESSARY.