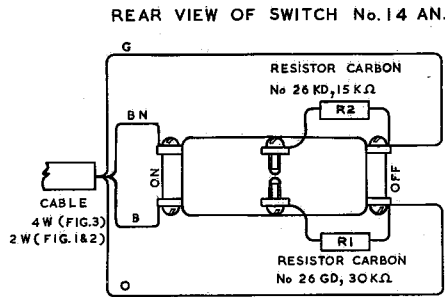


SUBSCRIBER - CONTROLLED CALL TRANSFER

NOTES:-

1. Resistor, Carbon No. 26 GD, 30K, and when required, Resistor Carbon No. 26 KD, 15K Ω should be mounted inside the Switch No. 14 AN as shown.



Mount the Switch No.14 AN in a convenient position near telephone and connect to telephone Block Terminal with Cable 4W (Fig.3) or 2W (Figs.1&2).

2. The Neon Lamp in the Handset No.7 will glow when the Switch No.14 AN is in the "Transfer on" position.

Apparatus required :-

At all installations:- Switch No.14 AN.

Resistor, Carbon No 26 GD, 30K.

Additional Items :-

System	300 Type Telephone Fig. 1.	700 Type Telephone Fig. 2.	700 Type Telephone with Lamp Indication. Fig. 3.
Single Transfer	—	—	Handset No. 7. Transformer No. 43I (Note B, Fig 3). Resistor, Carbon No. 26 KD, 15K. Cord, Inst. No. 5/37 AA.
Group Transfer	Cord, Inst. No. 3/62 B.	—	Handset No. 7. Transformer No. 43I (Note B, Fig 3). Resistor, Carbon No. 26 KD 15K Cord, Inst. No. 6/44 AA.

USING 300 TYPE TELEPHONE.

FIG. 1A. SINGLE TRANSFER SYSTEM

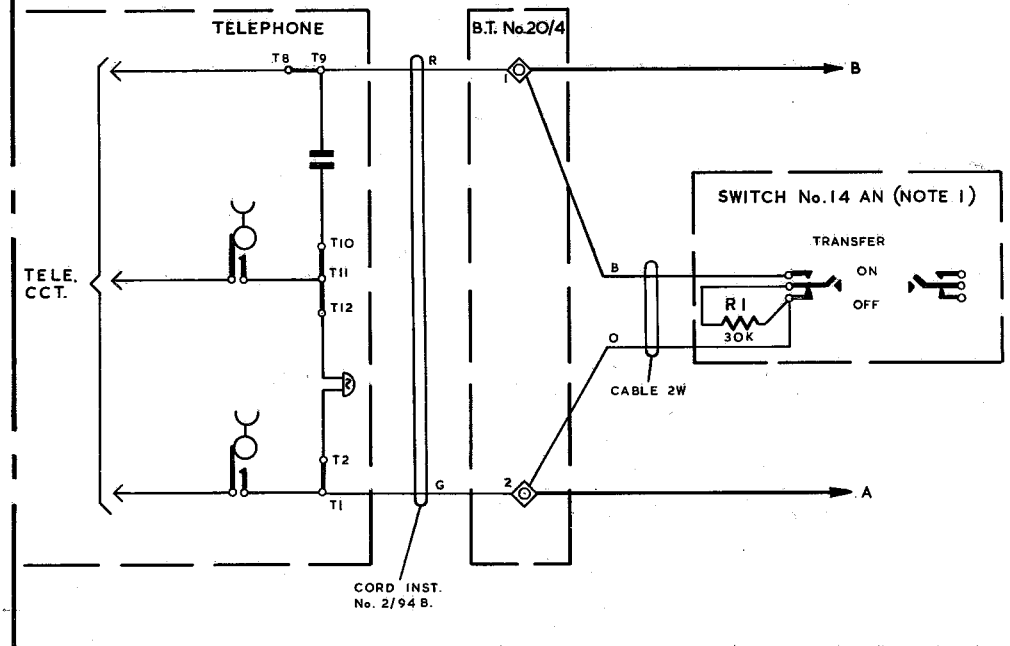
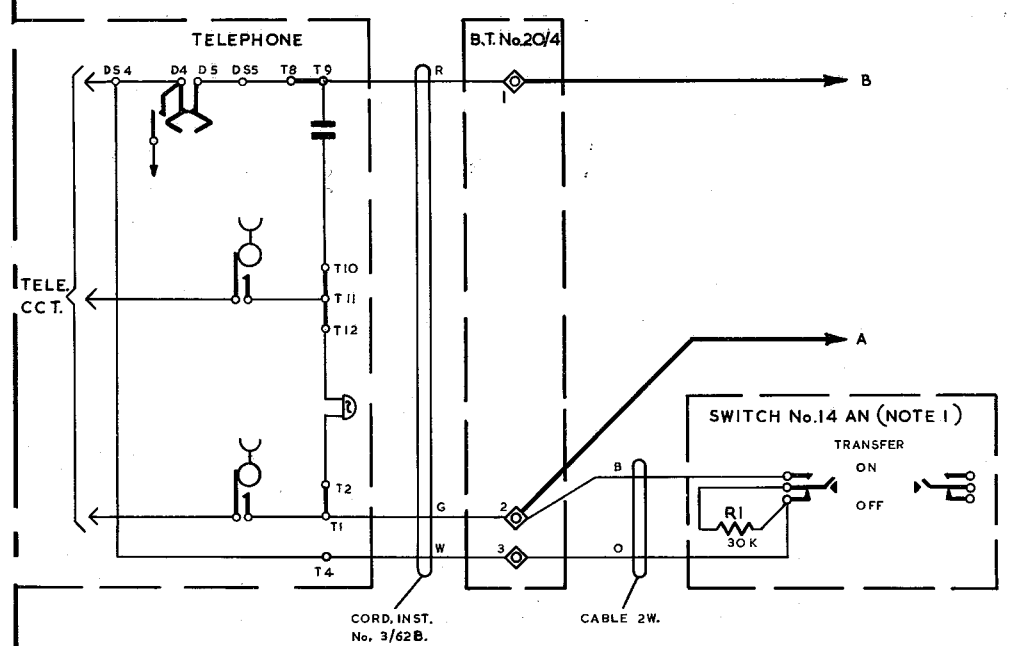


FIG. 1B. GROUP TRANSFER SYSTEM.



P.O.E.D.
S BCH.

PAPER :- W
CIRCLTN. :-
GENERAL

ISSUE

s1/3.

25.10.67.

USING 700 TYPE TELEPHONE

FIG. 2A. SINGLE TRANSFER SYSTEM

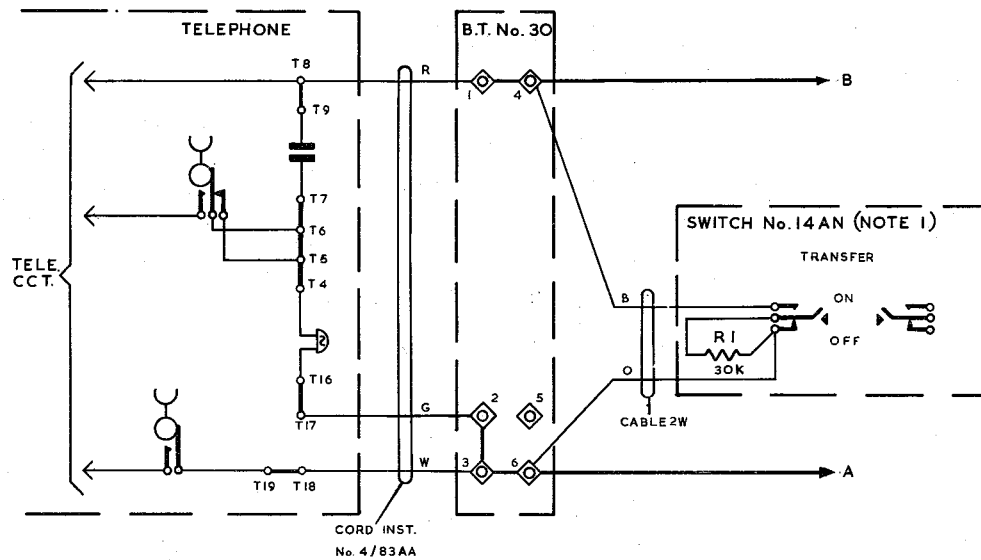
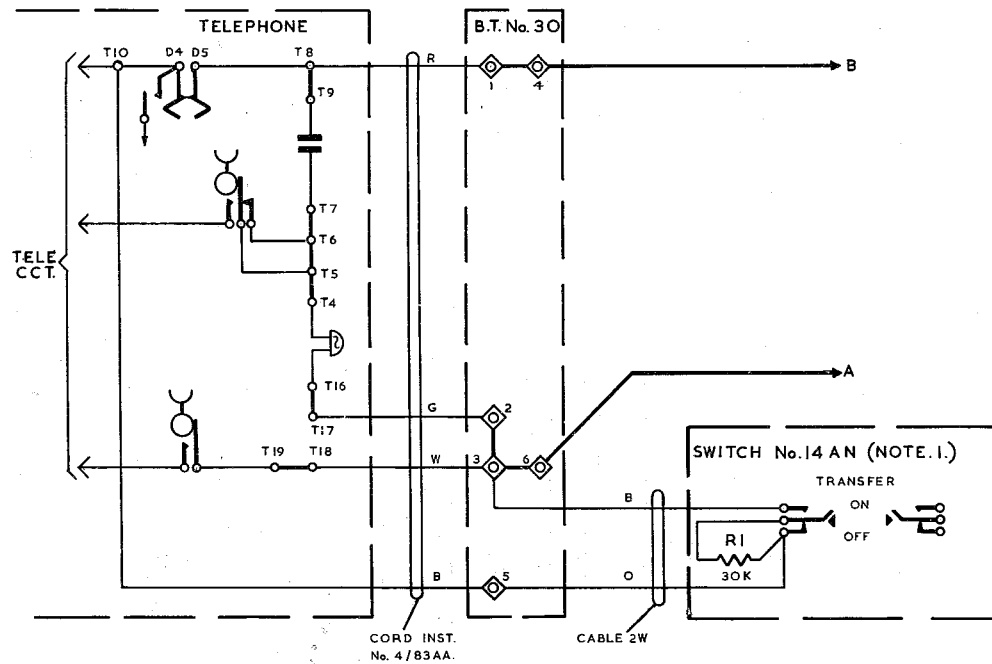


FIG. 2B. GROUP TRANSFER SYSTEM.



USING 700 TYPE TELEPHONE AND HANDSET No. 7 (NOTE 2.)

FIG. 3A. SINGLE TRANSFER SYSTEM

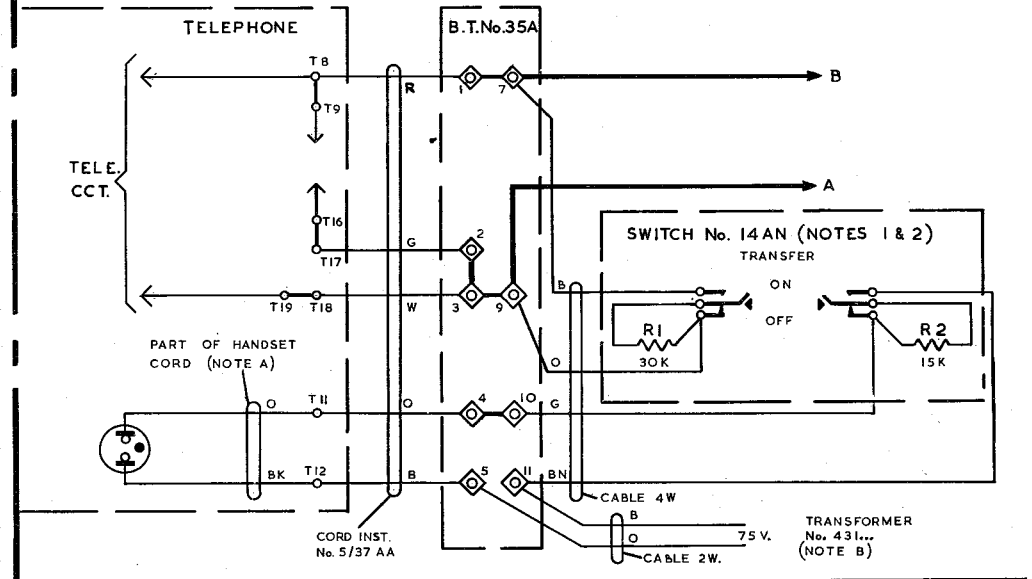
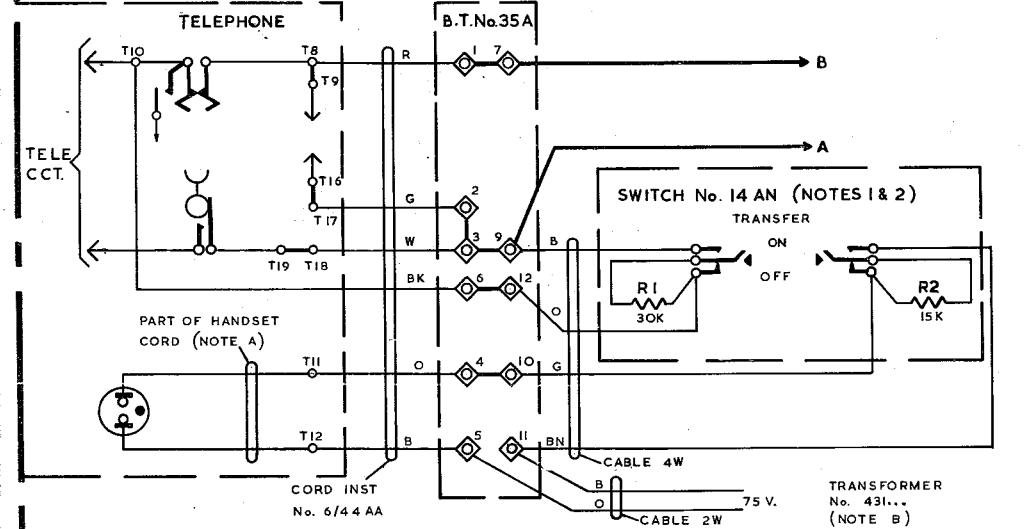


FIG. 3B. GROUP TRANSFER SYSTEM



NOTES :-

- A. The Transmitter & Receiver Conductors of the Handset No. 7 Cord replace the existing Handset Cord Conductors on Terminals T1, T2, T3 & T10.
- B. Transformer No. 431A (15 Amp. outlet), or No. 431B (13 Amp. outlet) is permanently wired to the Block Terminal No. 35A.