

**CB & AUTO SYSTEMS**  
**EXTENSION PLAN IA**  
**ON EXCHANGE LINE OF EXTENSION PLAN 7 (BELL-SET No.44)**  
**USING TELEPHONE No.328... OR No.1/232... WITH BELL-SET No.26**

**NOTES**

**GENERAL**

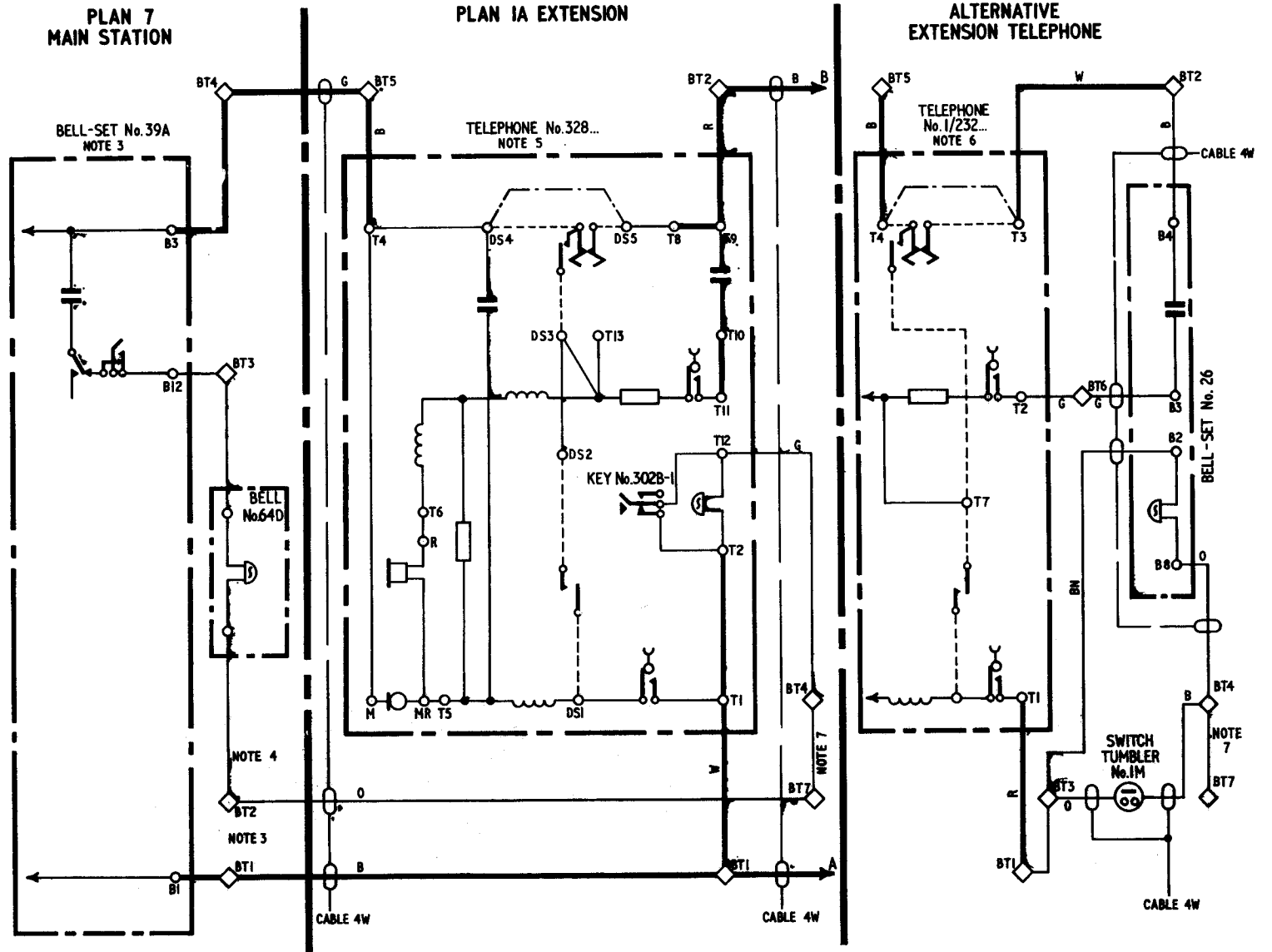
- 1 Only one Plan IA Extension may be fitted.
- 2 The diagram shows a Plan IA Extension on the exchange line of a Plan 7. The exchange line is taken via the Plan IA Extension to the Main of the Plan 7.

**PLAN 7 MAIN**

- 3 For Plan 7 connexions reference should be made to Dgm. N4310, with the exception that Strap BT1-BT2 should be removed.
- 4 If an extension bell is required transfer orange wire from BT2 to spare terminal. Connect bell between BT2 & spare terminal. Spare terminal to be BT12 with internal Plan 7 & BT8 with external Plan 7.

**PLAN IA EXTENSION**

- 5 When using Tele. No. 328... fit Cord, Inst.No.4/57B & Block, Terminal No.36B. Remove Strap T11-T12 & connect Straps T1-T2 & BT4-BT7. Fit Key No.302B-1 and connect to T2 & T12 to short circuit these terminals when the key is normal and open circuit when the key is depressed. Fit Part V/DPL/35B and Label No.252C to case.
- 6 When a separate bell-set is required, fit Tele.No.1/232... & Bell-set No.26. Change Cord, Inst.No.3/62B for Cord, Inst.No.4/57B. Fit Block, Terminal No.36B & Switch, Tumbler No.1M & connect latter between BT3-BT4, connect Straps BT1-BT3 & BT4-BT7. Disconnect strap between B2-B3 in Bell-set No.26.
- 7 If an extension bell is required connect bell in place of Strap BT4-BT7.
- 8 On installations to the original issue of this diagram a Cord, Inst.5/14B was fitted to the Telephone No.328... and T1 & T2 were not strapped.



P.O. TELECOMMS. HQRS.	ISSUE			
PAPER :- Y				
DISTN.	E	New format. Minor amendments. Made yellow. <i>RL</i>	TD 2.3.1	25-1-74
CB & AUTO	D	Notes amended.	S1	5.6.59