

CB & AUTO SYSTEMS
SUBSCRIBER'S EXTENSION PLAN I (INTERNAL ONLY) ON EXCHANGE LINE OF
EXTENSION PLAN 7 (BELL-SET No. 39A & No. 44)
USING TELEPHONE No. 326CB OR No. 1/232, CAPACITOR MC No. 1021/1 & BELL No. 56A

NOTES
GENERAL

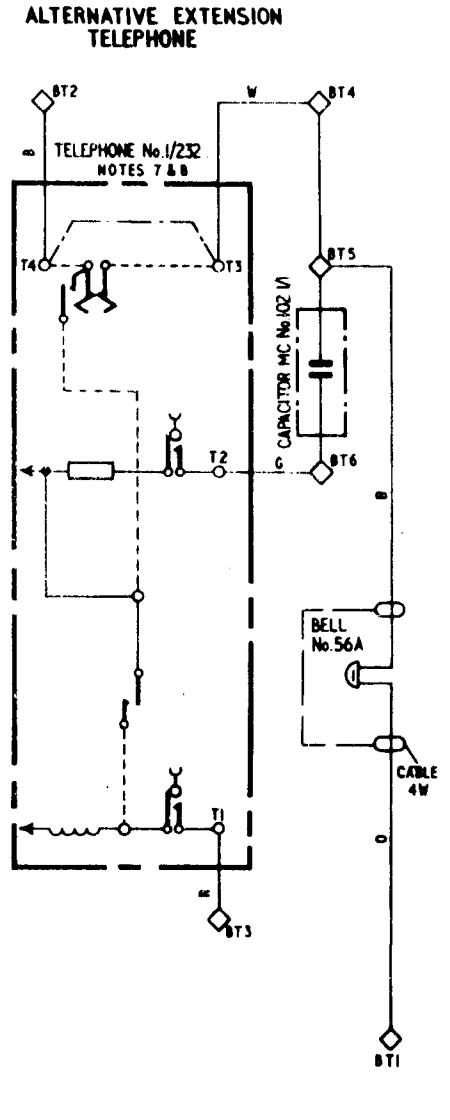
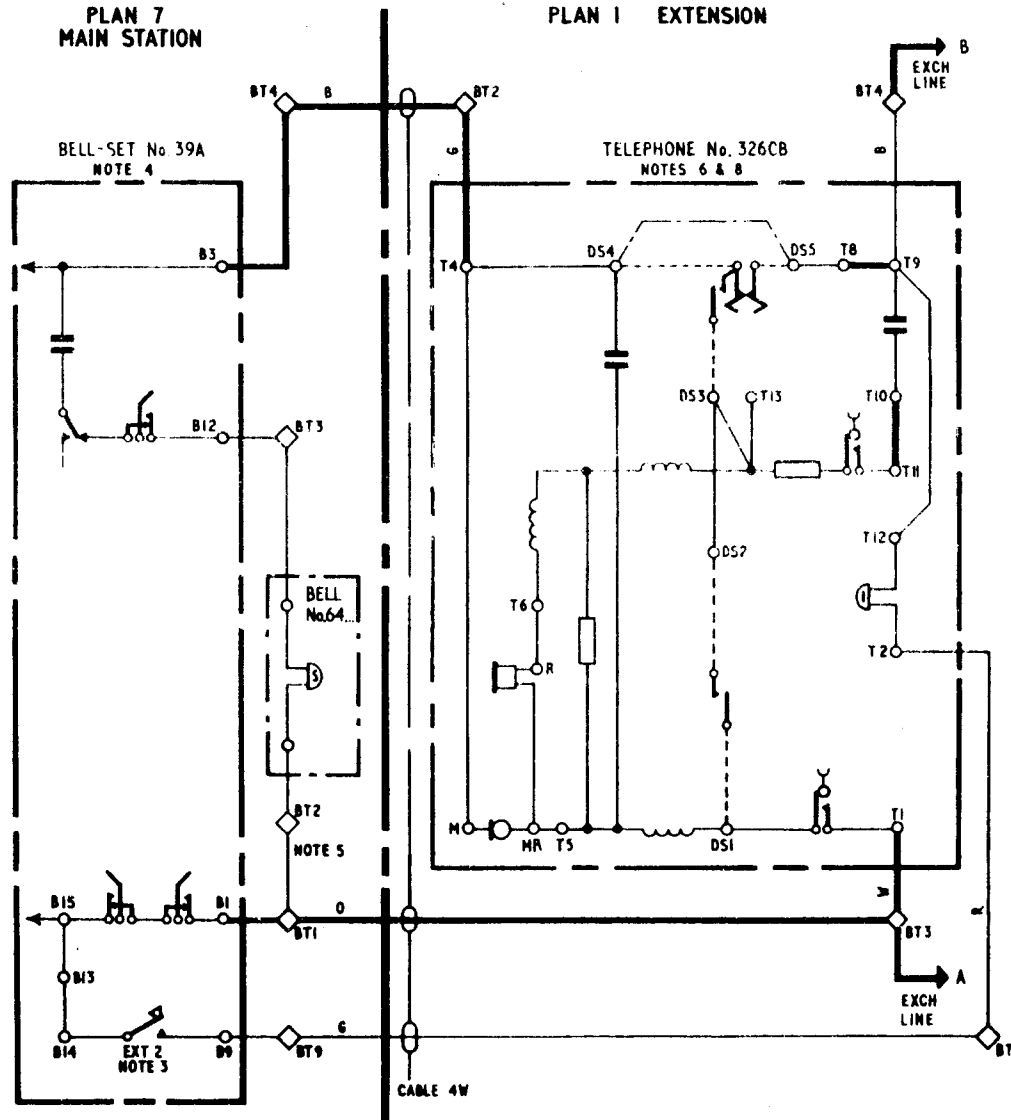
- 1 Only one Plan I Extension may be fitted.
- 2 The diagram shows a Plan I Extension on the Exchange line of a Plan 7. The Exchange line is taken via the Plan I Extension to the Main of the Plan 7.
- 3 When the Plan 7 has an external Extension use Press-Button I of Bell-set No.39 or Press-Button A of Bell-set No.44 and connect green wire to BT8.

PLAN 7 MAIN

- 4 For Plan 7 connexions reference should be made to Dgm N4310.
- 5 If an extension bell is required connect Bell No.64 in place of Strap BT1-BT2. Use cable 4W and connect to Bell terminals 1&4 with 2&3 strapped.

PLAN I EXTENSION

- 6 When using Tele No.326... fit Cord, Inst.No.4/57B & Block, Terminal No.52A & connect Strap T9-T12.
- 7 When a separate bell is required fit Tele No.1/232... & Bell No.56A with coils connected in series. Change Cord, Inst. No.3/62B for Cord, Inst. No.4/57B. Fit Block, Terminal No.35A & Capacitor MC No.1021/1 & connect latter between BT5-BT6, connect Strap BT4-BT5.
- 8 For automatic working use appropriate Tele. eg. Tele No.1/232F
When using Tele No.326CB the following items should be fitted:-
Dial Auto No.12... & Cord, Inst. No.5/28E



P.O. TELECOMMS HQRS	ISSUE				
		PAPER:-Y			
		DISTN - CB & AUTO	B New Format Minor amendments Made Yellow	TD2.3.1	1 2 74
	A Plan 7A deleted Notes amended	SI	15.6.56		