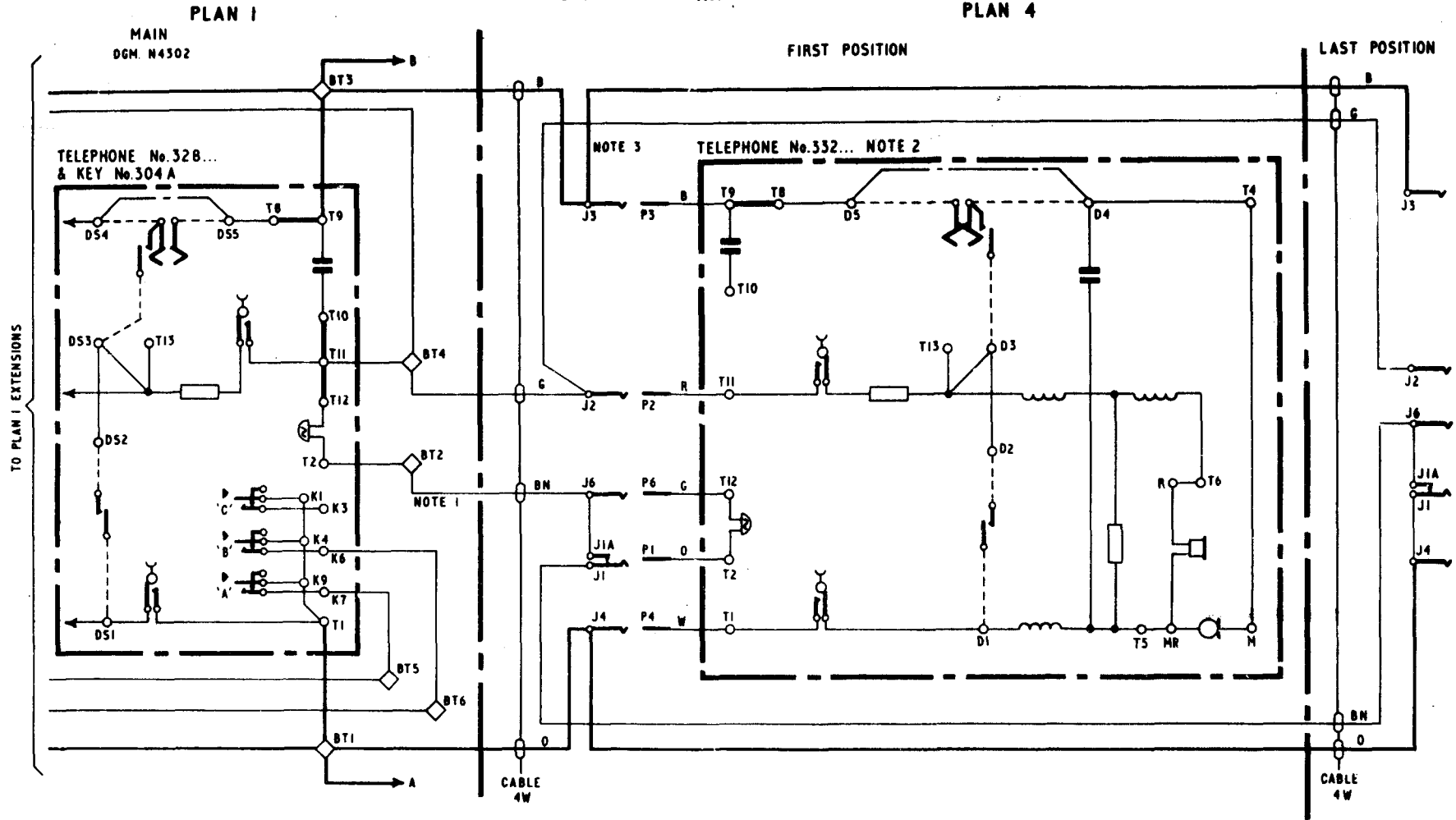
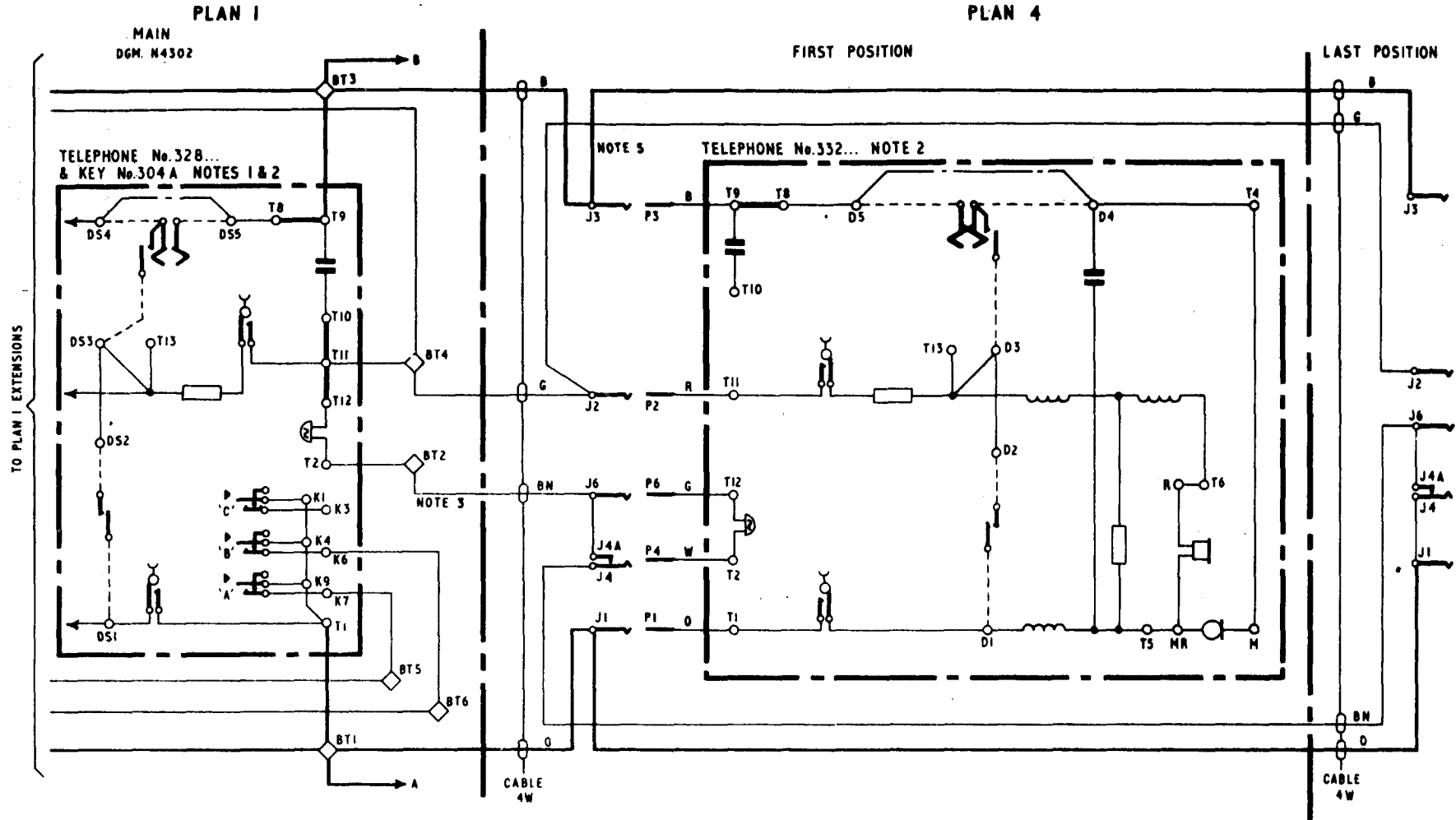


**CB & AUTOMATIC SYSTEMS**  
**PLAN 4 FACILITIES (INTERNAL ONLY) ON SUBSCRIBERS EXTENSION**  
**PLAN I (MAIN) USING TELEPHONES Nos. 332... & 328...**

USING JACKS No. 64A



PO TELECOMMS HQRS	ISSUE			
PAPER:- Y				
DISTN :- CB & AUTO	C	NEW FORMAT. MINOR AMENDMENTS. MADE YELLOW	TD 2 3 1	23 1 74
	B	NOTES AMENDED. NOTE 5 ADDED.	TD 2 3 1	2 3 61



NOTES:-

PLAN I. MAIN

1. For Plan I connexions reference should be made to Dgm. N4302, with the exception that Strap BT1-BT2 should be removed.

PLAN 4

2. Remove Card, Inst. No. 2/94... and Block, Terminal No. 20/4 from Telephone No. 332... Fit Cord, Inst. No. 6/28B brown 72" & Plug No. 612. Remove Straps T1-T2 and T10-T11-T12.
3. At each Jack No. 64A connect Strap J1A-J6.
4. At last Jack No. 64A connect Straps J1A-J6 and J1-J4.
5. Cord, Inst. No. 6/28B... Cut the spare black conductor back at both ends.