

CIRCULATION

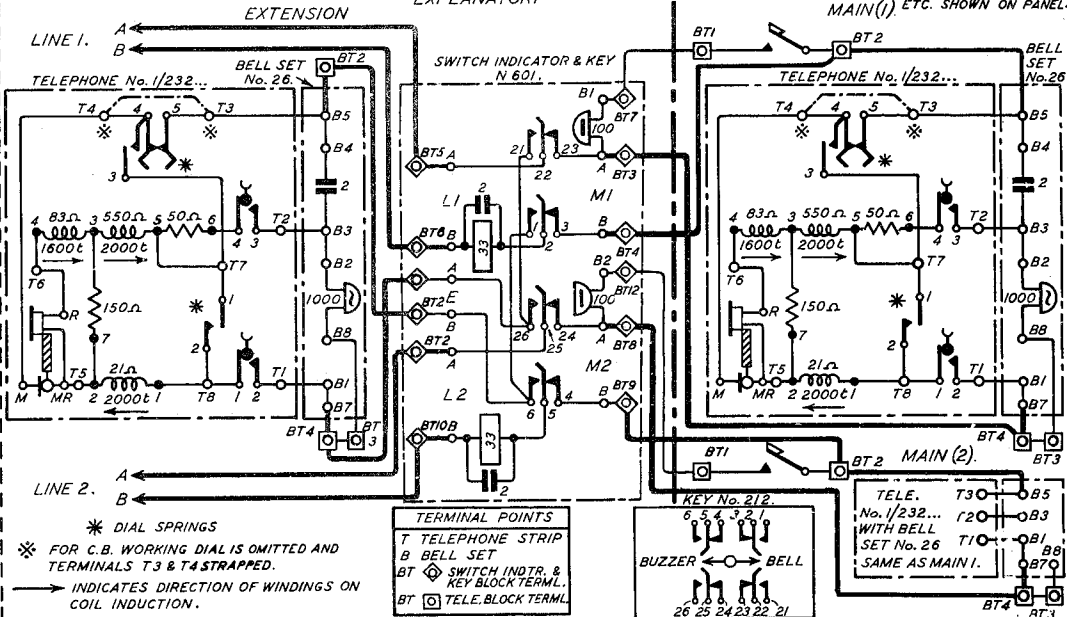
C.B. & AUTO.

C.B. & AUTOMATIC SYSTEMS
 EXTENSION WORKING, PLAN No. 8A (INTERNAL ONLY)
 USING TELEPHONE No. 1/232... WITH BELL SET No. 26.
 EXPLANATORY

N 4312

8-6-39
 4 PANELS - 1.

EXPLANATORY FOR
 TELES. No. 330... OR 331...
 ETC. SHOWN ON PANEL 4.



W

N 4312

4 PANELS-2

GENERAL.

1. FOR C.B. WORKING FIT AT:-
 - (a) MAIN - TELES. No. 1/232 C.B. WITH BELL SET No. 26 OR TELE. No. 330 C.B. OR 331 C.B.
 - (b) EXTENSION - TELES. No. 1/232 C.B. WITH BELL SET No. 26 OR TELES. No. 332 CB OR 333 CB.
2. FOR AUTO WORKING FIT AT:-
 - (a) MAIN - TELES. No. 1/232... WITH BELL SET No. 26 OR TELE. No. 330... OR 331...
 - (b) EXTENSION - TELES. No. 1/232... WITH BELL SET No. 26 OR TELE. No. 332... OR 333...
3. WHEN USING TELE. No. 331... OR 333... REMOVE STRAP BETWEEN T1 & T2 & USE CABLE IN LIEU OF CORDS INST. No. 3/62B & 4/57B. FOR CORRESPONDING CABLE COLOURS SEE DIAGRAM N 4199.
4. EXTENSION BELLS, CONNECT IN PLACE OF STRAP BETWEEN BT3 & BT4 WHEN REQUIRED.

MAIN.

5. WHEN USING TELE. No. 1/232... & BELL SET No. 26.
 - (a) REQUISITION & FIT PRESS BUTTON 'G', LABELS No. 21 ENGRAVED "RING EXTENSION" (ENGRAVING No. 12B1) MAY BE FITTED IF REQUIRED.
 - (b) REMOVE STRAP BETWEEN B7 & B8 IN BELL SET No. 26.
6. WHEN USING TELE. No. 330... OR 331... REQUISITION & FIT LABEL No. 252A.

NOTES.

EXTENSION.

7. SWITCH INDICATOR & KEY N 601 INCLUDES A BLOCK TERML. 20/12 & CORDAGE INST. No. 12/G. Brn. 60."
8. WHEN USING TELE. No. 1/232... & BELL SET No. 26 REMOVE STRAP BETWEEN B7 & B8 IN BELL SET No. 26.

N.B. PARTICULARS OF FACILITIES ON PLAN No. 8A ARE SHOWN ON DIAGRAM N 1431.
THE FOLLOWING DIAGRAMS SHOW THE INTERNAL CONNEXIONS, ETC., OF:-

- | | |
|-----------------------------|----------------------------------|
| (1) TELE. No. 1/232 - N 332 | (4) TELE. No. 332 - N 432 |
| (2) TELE. No. 330 - N 430 | (5) TELE. No. 333 - N 433 |
| (3) TELE. No. 331 - N 431 | (6) BELL SET No. 26 - N 526 |
| | (7) SWITCH INDTR. & KEY - N 601. |

CIRCULATION

C.B. & AUTO.

C.B. & AUTOMATIC SYSTEMS

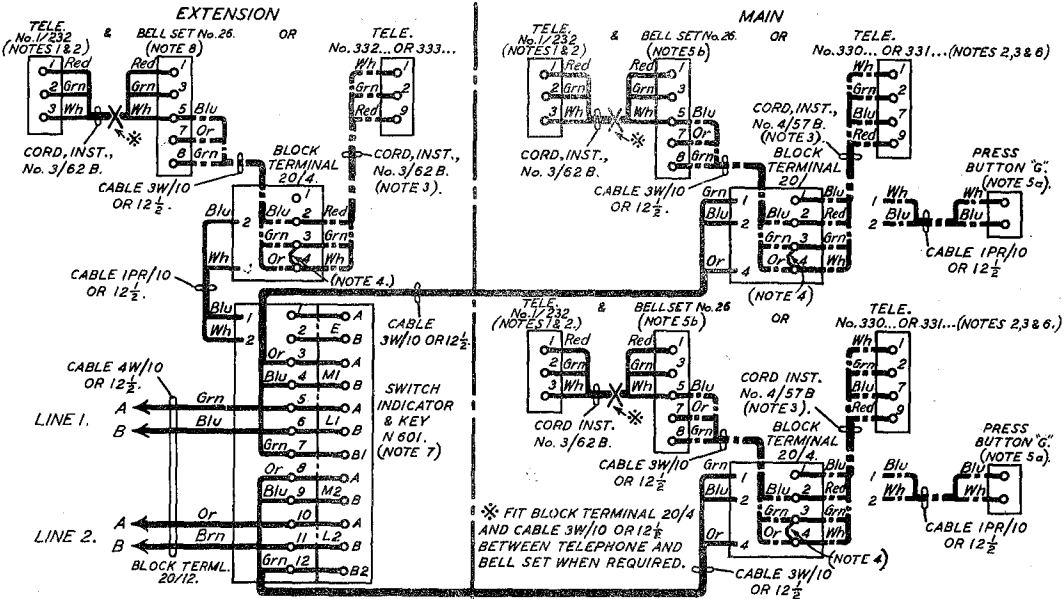
EXTENSION WORKING PLAN No. 8A (INTERNAL ONLY)

USING AT THE MAIN TELEPHONE No. 1/232... WITH BELL SET No. 26 OR TELEPHONE No. 330... OR 331...
AND AT THE EXTENSION TELEPHONE No. 1/232... WITH BELL SET No. 26 OR TELEPHONE No. 332... OR 333...

N 432

8-6-39
4 PANELS-3.

WIRING DIAGRAM.



AMENDMENT

W

CB & AUTOMATIC SYSTEMS
EXTENSION WORKING PLAN No.8A (INTERNAL ONLY)

N4312
PAGE 1-4
ISSUE A

NOTES:-

GENERAL

1. Particulars of facilities on Plan No. 8A are shown on Diagram N1431.
2. **EXTENSION BELLS**
 Connect in place of strap between BT3 & BT4 when required.

MAIN

3. When using Telephone No. 1/232... and Bell-set No. 26
 - (a) Requisition and fit Press-button G.Label No. 21 engraved RING EXTENSION (engraving No. 12B1) may be fitted if required.
 - (b) Remove strap between B7 & B8 in Bell-set No. 26.
4. When using Telephone No. 330... requisition and fit Label No. 252A.

EXTENSION

5. Switch Indicator and Key N601 includes a Block Terminal 20/12 and Cordage Inst. No. 12/G Brown 60".
6. When using Telephone No. 1/232... and Bell-set No. 26 remove strap between B7 & B8 in Bell-set No. 26.

PO TELECOMMS HQRS. PAPER:- Y DISTN:- CB & AUTO	ISSUE				
		A	NEW FORMAT, NOTES REWRITTEN, MADE YELLOW <i>ML</i> TD 7.1.1	21-6-74	
				8.6.36	

EXPLANATORY

