

**CB & AUTOMATIC SYSTEMS**  
**SUBSCRIBER'S EXTENSION PLAN 1A**  
**USING AT MAIN, TELEPHONE No. 1/232... WITH BELL-SET No. 26 OR TELEPHONE No. 332...**  
**AND AT EXTENSIONS, TELEPHONE No. 1/232... WITH BELL No. 64D OR TELEPHONE No. 328...**

**NOTES**

1. The facilities of Plan 1A are shown on Dgm. N 1425.

2. Apparatus required:-

**MAIN:-** Block, Terminal No. 55A and  
either Telephone No. 1/232...  
Bell-set No. 26  
or Telephone No. 332...  
Cord Inst. No. 4/57B...

**EXTENSION:-**

Block, Terminal No. 35A for intermediate and No. 52A  
for last extension and  
either Telephone No. 1/232...  
Bell No. 64D  
Switch Tumbler No. 1M  
or Telephone No. 328... minus cord  
Key No. 302A or No. 302B  
Part No. 1/DPL/358  
Label No. 252C  
Cord Inst. No. 5/14B... for intermediate and No. 4/57B  
for last extension.

3. Using Telephone No. 1/232... and Bell-set No. 26 at Main:-  
Remove Strap B7-B8 in Bell-Set No. 26. The Telephone cord  
may be terminated on a Block Terminal No. 52A connected to  
bell-set with Cable 4W.

4. Using Telephone No. 332... at Main:- Reccver Cord, Inst.  
No. 3/62B... and "Block, Terminal No. 20/4" and fit "Cord Inst.  
No. 4/57B... and Block Terminal No. 35A" Remove Strap T1-T2.

5. Using Telephone No. 328... at:-

(a) Intermediate extension remove Straps T10-T11 and T11-T12

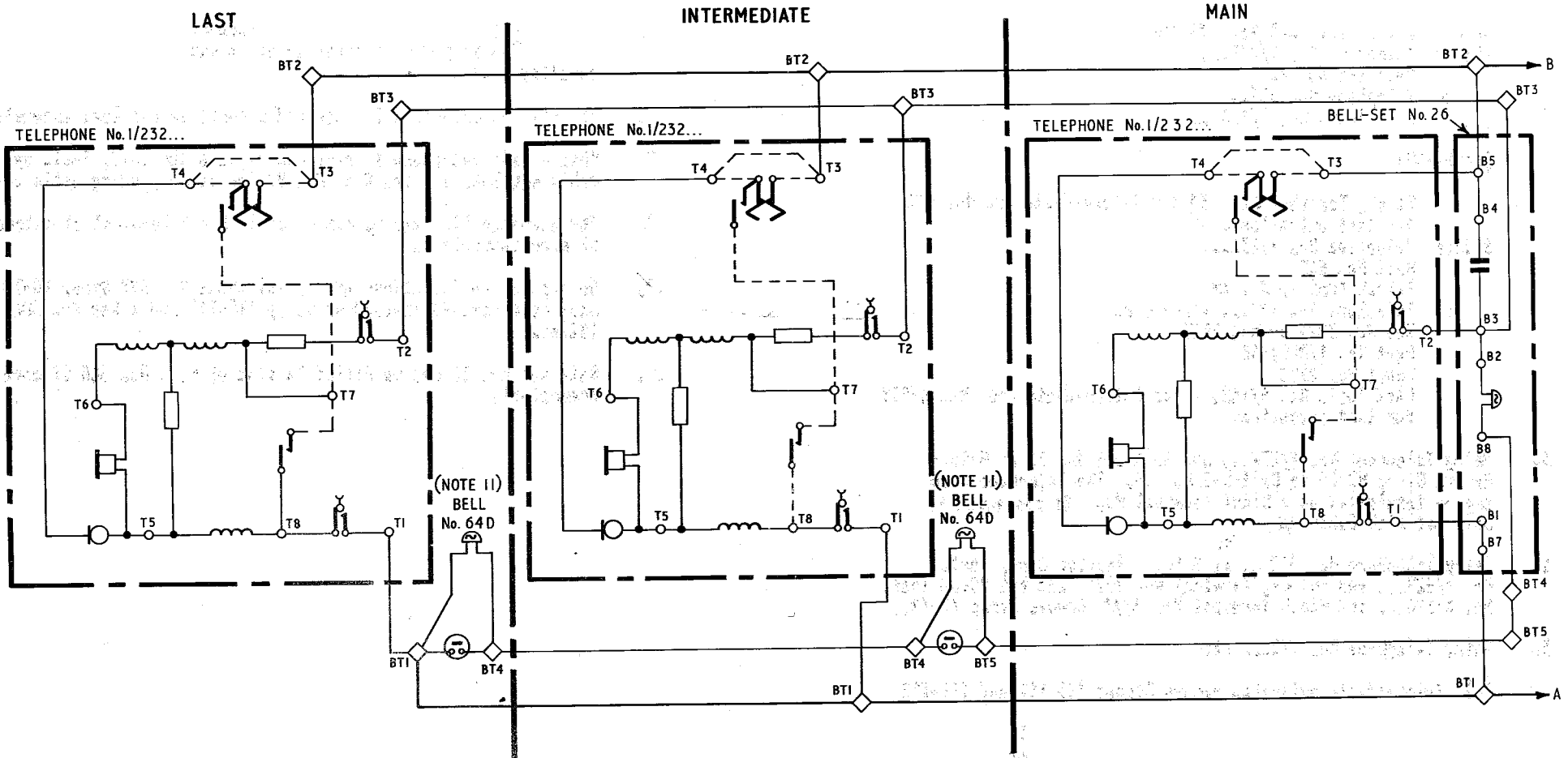
(b) Last extension remove Straps T10-T11 and T11-T12 connect  
T1 and T2 at both extensions fit Key No. 302A-1 or No. 302B-1

and connect to T2 and T12 to short circuit these terminals when  
the key is normal and open circuit when the key is depressed.  
Fit Part No. 1/DPL/358 and Label No. 252C to case

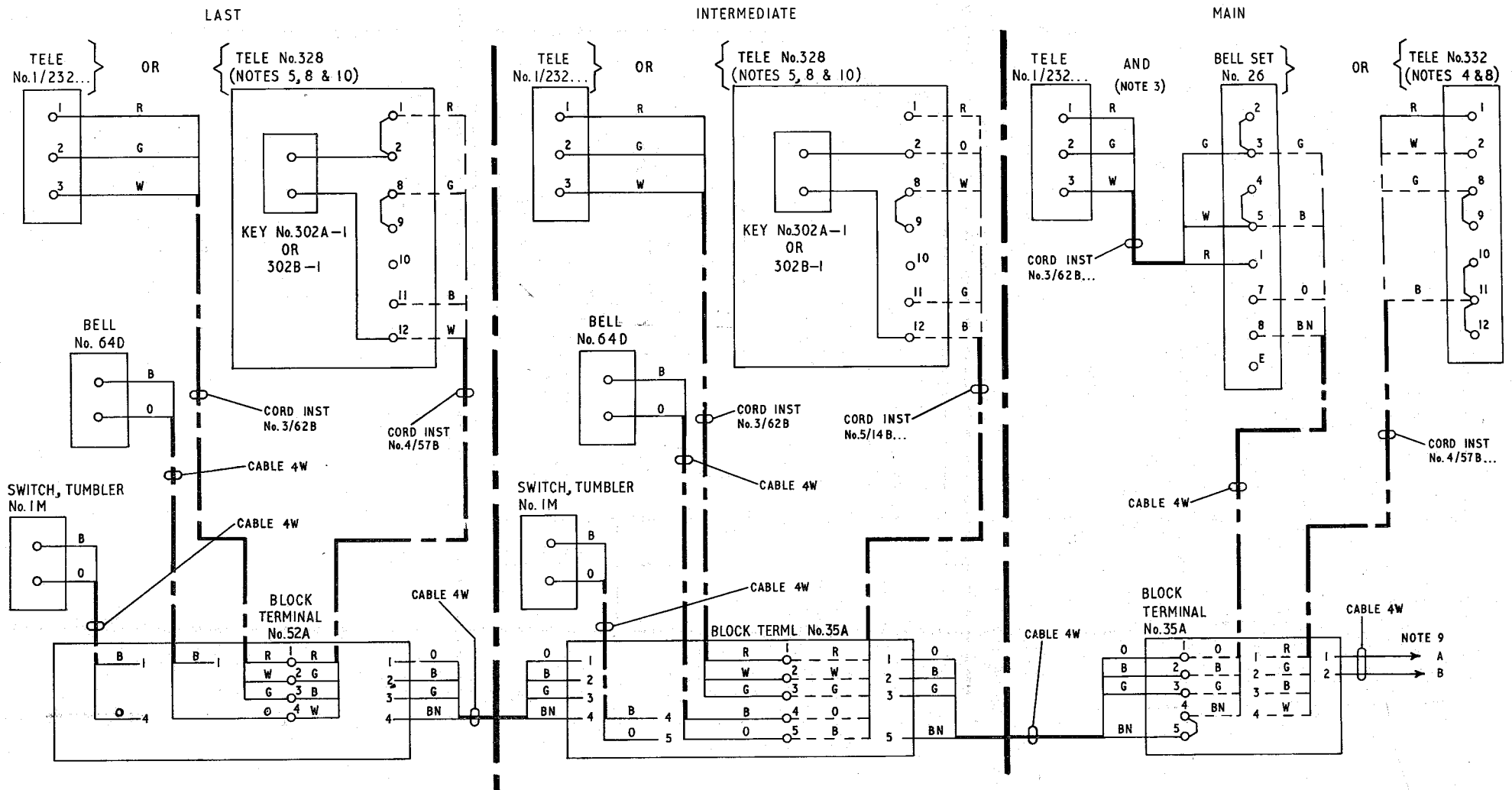
6. When an extension bell is required connect either at main to  
BT4 and BT5 in place of strap or at an extension in series with  
existing bells.
7. If only one extension is required connect as for last extension.
8. When a wall telephone is required replace the cord, inst. by  
cable equivalent. See Dgm. N 4199 for corresponding cable colour.
9. The exchange line may be connected to block terminal at extension  
if more convenient.
10. On earlier installations with a Telephone No. 328 Strap T8-T9 may  
have been removed instead of Strap T10-T11 and a Key No. 304A  
fitted.
11. Bell-set No. 26 may be fitted in lieu of Bell No. 64D if more  
convenient.

P.O. TELECOMMS HQRS PAPER:- Y DISTN: CB & AUTO	<b>ISSUE</b>		
		NEW FORMAT. MINOR AMENDMENTS. <i>ALL</i> TD 2-3-1	18-7-73

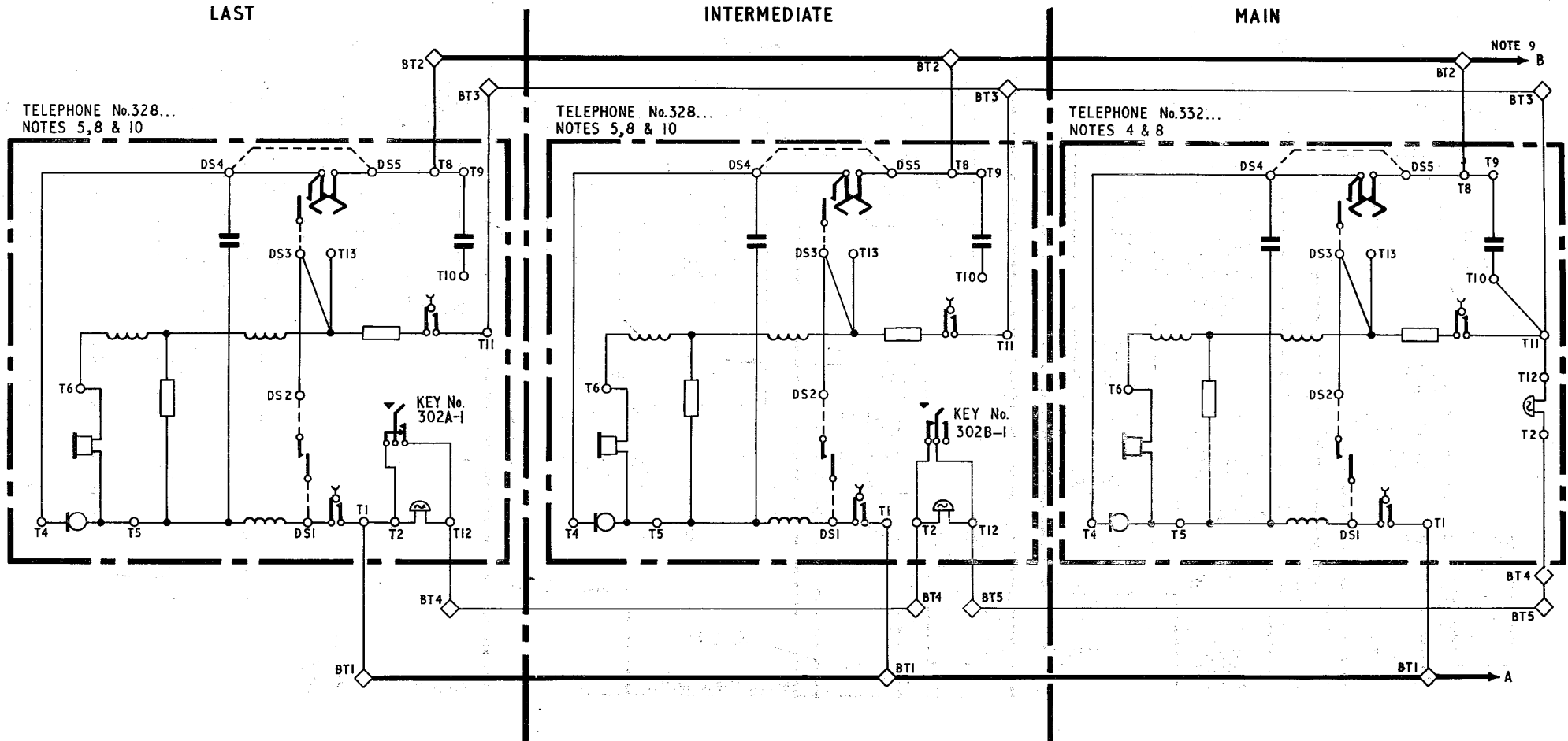
USING TELEPHONE No.1/232..  
EXPLANATORY



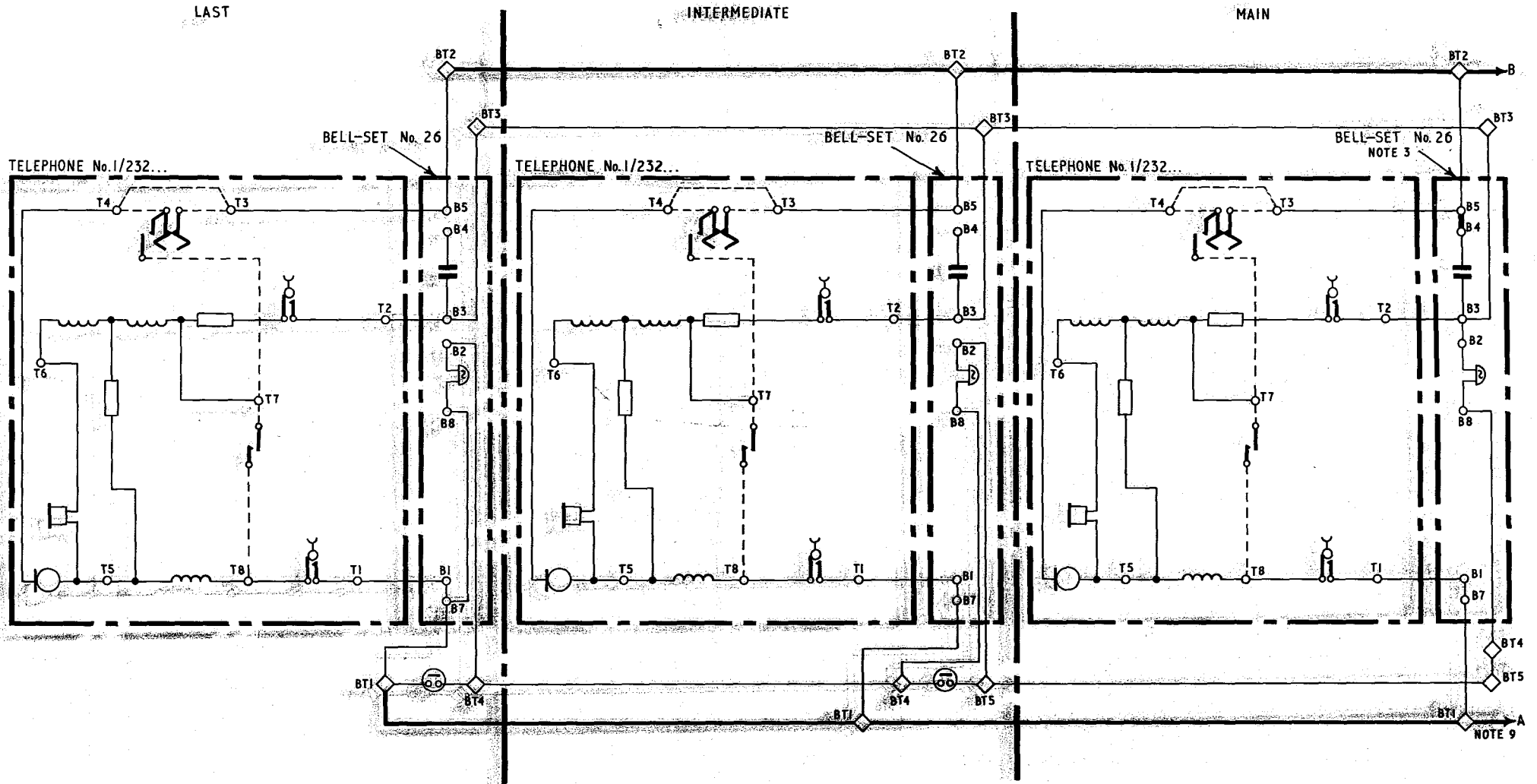
USING AT MAIN, TELEPHONE No.1/232... WITH BELL SET No.26 OR TELEPHONE No.332...  
 AND AT EXTENSIONS TELEPHONE No.1/232... WITH BELL No.64D OR TELEPHONE No.328...  
 WIRING DIAGRAM



USING TELEPHONES Nos.322... AND 328...  
EXPLANATORY



USING TELEPHONES No. 1/232... WITH BELL SETS No. 26  
EXPLANATORY



USING TELEPHONE No. 1/232... WITH BELL-SET No.26

WIRING

