

KEYS No. 302... 303... & 304...  
FOR USE WITH CERTAIN TABLE & WALL 300 TYPE TELEPHONES  
SEE TD C3 B 0054 FOR PHYSICAL DESCRIPTION

PICTORIAL VIEWS OF PLUNGERS FOR USE WITH KEYS No. 302... 303... & 304...

PART 1/SPL/325



FOR USE IN TABLE TELEPHONES WITH KEYS No. 302... WHEN LOCKING FACILITY IS NOT REQUIRED AND WITH KEYS No. 303... & 304...

PART 1/DPL/361



FOR USE IN WALL TELEPHONES WITH KEYS No. 302... WHEN LOCKING FACILITY IS NOT REQUIRED AND WITH KEYS No. 303... & 304...

PART 1/DPL/358



FOR USE IN TABLE TELEPHONES WITH KEYS No. 302... WHEN LOCKING FACILITY IS REQUIRED

PART 1/DPL/365



FOR USE IN WALL TELEPHONES WITH KEYS No. 302... WHEN LOCKING FACILITY IS REQUIRED

KEY No. 302A-1  
SEE NOTES 2, 3 & 6

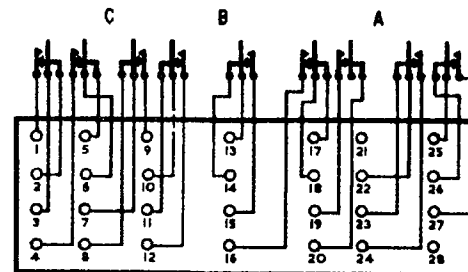


KEY No. 302B-1  
SEE NOTES 2, 3 & 6



WIRING OF THE KEYS

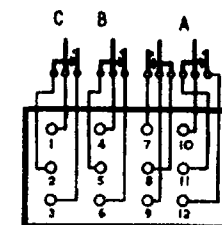
KEY No. 303 A  
SEE NOTES 4, 5, 6 & 7



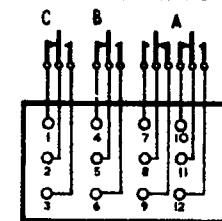
KEY VIEWED FACING TERMINAL PLATE

Key's No. 303A, 304A and 304B can be locking or non-locking

KEY No. 304A  
SEE NOTES 4, 5, 6 & 7

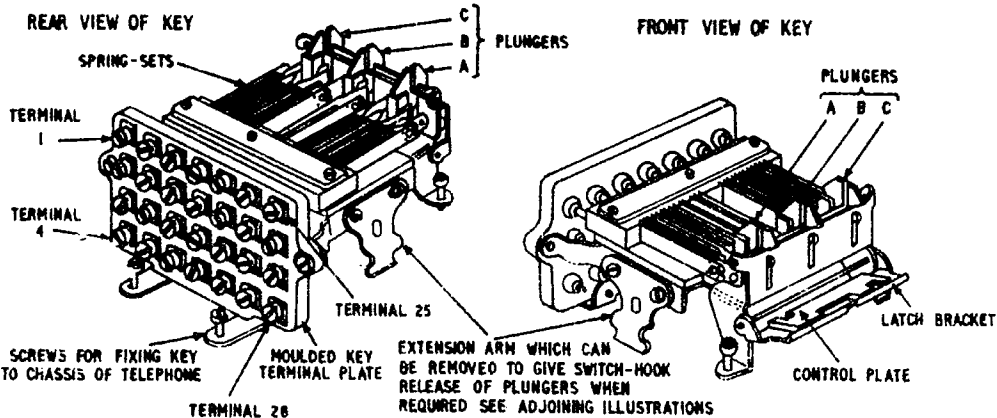


KEY No. 304B  
SEE NOTES 4, 5, 6 & 7



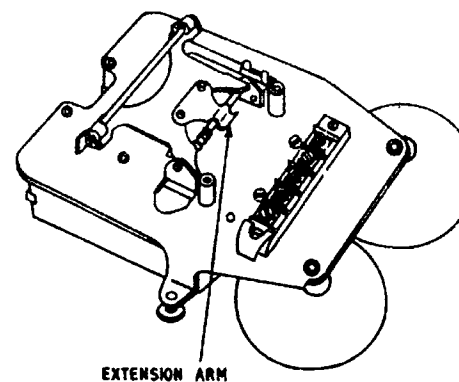
PICTORIAL VIEWS OF KEY No. 303A

KEY No. 304... IS SIMILAR IN CONSTRUCTION BUT HAS A SMALLER NUMBER OF SPRINGS & TERMINALS

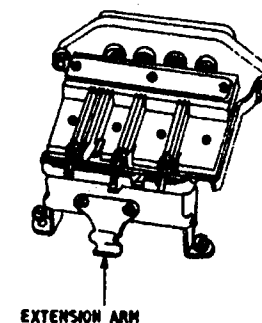


KEYS No. 303... & 304...  
FITTING OF EXTENSION ARM TO PROVIDE GRAVITY SWITCH RELEASE

TABLE TELEPHONE

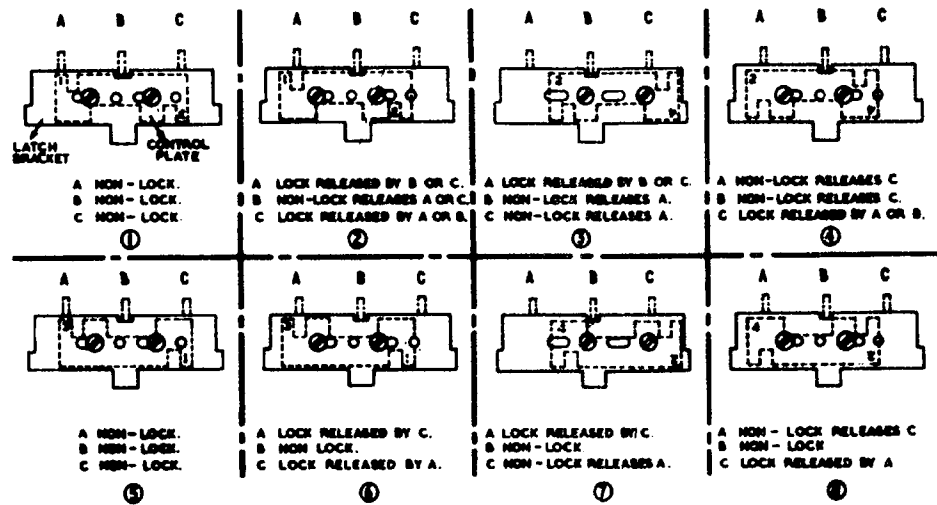


WALL TELEPHONE



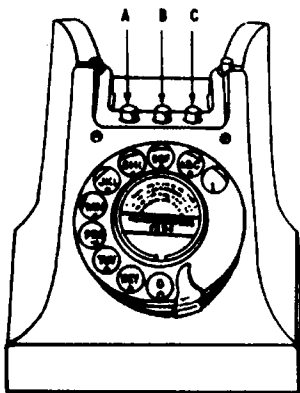
P O TELECOMMS HQRS	ISSUES			
COLOUR:-Y				
DISTN:- GENERAL	L	Page 1 redrawn. Made Yellow	TD 2-3-1	5-6-74
	K	New format	AFW	14-10-68

KEYS No. 303 & 304.  
LATCH BRACKET CONTROL PLATE POSITIONS  
VIEWS ARE LOOKING AT THE FRONT OF LATCH BRACKET

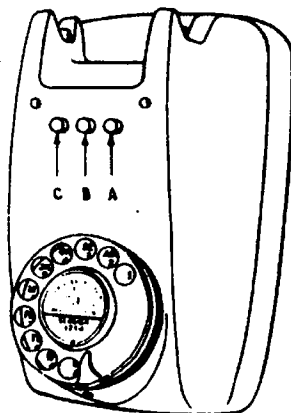


PICTORIAL VIEWS OF THE ORDER OF PLUNGERS IN TABLE & WALL TELEPHONES  
FOR USE WITH KEYS No. 303... & 304...

PLUNGERS IN TABLE TELEPHONE



PLUNGERS IN WALL TELEPHONE



NOTES:-

- For the Labels used in conjunction with these Keys See Dgm. N.620.
- (a) Keys Nos.302A & 302B are non-locking when used with Plunger 1/SPL/325 (Table Telephones) & Plunger 1/DPL/361 (Wall Telephones).  
(b) Keys Nos.302A & 302B are Locking when used with Plunger 1/DPL/358 (Table Telephones) & Plunger 1/DPL/365 (Wall Telephones).
- Keys Nos. 302A-1 & 302B-1 have a short length of wire P.V.C. No.2, 3W/9½ soldered to their tags to facilitate connexion. The wire, P.V.C. is not provided with Keys No.302A & 302B.
- Plungers 'A' & 'C' of telephones fitted with Keys Nos. 303... & 304... may either be locking or non-locking, and if locking may be released by the pressing of the other Plungers, depending upon the setting of control plate on the latch bracket (see Page 2 for details of settings).
- Plungers 'A' & 'C' when locked may also be released by restoration of the telephone gravity switch. This facility is obtained by removing the extension arm (Part No.2/SPL/488) from the side of the Key where it is stored (see illustration on Page 1) and:-  
(a) For Table Telephones - fitting it to the telephone gravity switch bracket as shown on Page 1.  
(b) For Wall Telephones - fitting it to the Key Latch Plate as shown on Page 1. (It should be fitted using the screws which hold the control and latch plate together, the screws with which it is stored should be replaced in the storage holes)  
(c) Early supplies of Keys Nos.303A, 303B, 304A & 304B were fitted with extension arm (Part No.1/SPL/488) which is not suitable for providing gravity switch release on Wall Telephones.
- When Keys Nos.302..., 303... & 304... are requisitioned for fitting to telephones the necessary number of Plungers of the correct type should be requisitioned at the same time (see Page 1 for types of Plungers).
- When viewed by the telephone user Keys Nos.303... & 304... are fitted the reverse way round in the Wall Telephones, compared with the Table Telephones, so that the order of the Plungers is reversed (see Page 2). By an interchange of the connexions between the 'A' & 'C' spring sets of the Key it will be possible in most cases to use the normal Label No.252. Where this interchange is not possible the Key spring sets 'A' & 'C' should be wired in accordance with the N Diagram for the Table Telephone and a Label No.352 should be ordered engraved by the Factories Department with reverse labelling in the 'A' & 'C' positions to that of the normal Label No.252.