

C.B.S. Nos. 2 & 3 SYSTEMS
SHARED SERVICE (MANUAL)
SUBSCRIBER'S EXTENSION PLAN IB (INTERNAL ONLY)

N4143
 6-PANELS-1
 1B-8-51

NOTES

Y	SUPERSESSION NOTE TO ADDED, ALL PANELS 12						
	C	B	A	5, 43	24-4-57	15-6-36	A
	MADE YELLOW						
	PANELS 5 & 6 MADE YELLOW						
	CIRCUIT MODIFICATION. MADE 6 PANELS.						
	CAPACITOR No. 7712 WAS MC No. 102 1/2 IN. (NOT RE-REVISED)						
	C.B.S. Nos. 2, 3 & MAGNETO						

1. DIAGRAM N1436 GIVES THE FACILITIES AVAILABLE ON A PLAN IB.
2. APPARATUS REQUIRED:—
 AT MAIN:— TELEPHONE No. 1/196 LB, BELL SET No. 31 & BLOCK TERMINAL No. 20/B OR TELEPHONE No. 396 LB & BLOCK TERMINAL No. 20/B ALSO CAPACITOR PAPER No. 7712 & CELLS LECLANCHÉ DR2.
 AT EXTENSIONS:— TELEPHONE No. 1/196 LB & BELL SET No. 31 OR TELEPHONE No. 396 LB MINUS CORD & CORD, INST. No. 4/57B... ALSO BLOCK TERMINAL No. 20/4 & CELLS LECLANCHÉ DR2.
3. FIT CELLS LECLANCHÉ DR2 AS REQUIRED (SEE E.I. TELES STATIONS A3205)
4. WHEN USING TELE. No. 1/196 LB & BELL SET No. 31 DISCONNECT STRAP B6-B7 IN THE BELL SET. FIT CAPACITOR PAPER No. 7712 IN SPACE BETWEEN THE INDUCTION COIL AND THE BELL COILS & RETAIN IN POSITION BY A STRIP OF TAPE PLASTIC ADHESIVE PASSING ROUND THE CAPACITOR & THE INDUCTION COIL. THE CORD CONNEXION TO 7B IN TELEPHONE No. 1/196 LB IS SPARE IN THIS CIRCUIT. IF REQD, TELEPHONE No. 1/196 LB MAY BE TERMINATED ON A BLOCK TERMINAL No. 20/4 CONNECTED TO THE BELL SET No. 31 BY CABLE 4W.
5. WHEN USING TELEPHONE No. 396 LB AT THE MAIN, REARRANGE CORD CONNEXIONS ON BLOCK TERMINAL No. 20/B & DISCONNECT STRAPS BT2-BT3. FIT CAPACITOR PAPER No. 7712 ON TELE. CHASSIS & HOLD IN PLACE WITH A CLIP No. 56 3/4 IN. WHICH SHOULD BE FIXED UNDER ONE OF THE BELL-FIXING SCREWS. TRANSFER GREEN CONDUCTOR FROM T6 TO T3. JOIN T5 TO T8. CONNECT CAPACITOR, PAPER, No. 7712 TO T3 AND T12.
6. FOR AN EXTENSION BELL FROM THE MAIN CONNECT BELL No. 64D BETWEEN BT3 & BT4.
7. FOR NEW WORK CAPACITOR PAPER No. 7712 HAS SUPERSEDED CAPACITOR MC No. 102 1/2. THIS WAS CONNECTED IN PLACE OF THE STRAP BT3-BT4.
8. THE DIAGRAM SHOWS CONNEXIONS FOR THE X SUBSCRIBER. FOR THE Y SUBSCRIBER REVERSE THE A & 3 LINES ON BT1 & BT2 AT THE MAIN.
9. WHEN USING TELEPHONE No. 1/196 LB AT THE EXTENSIONS IF REQD. THE CABLES BETWEEN THE EXTENSIONS AND THE BATTERY MAY BE CONNECTED DIRECT TO THE BELL SET No. 31 OMITTING THE BLOCK TERMINAL No. 20/4.
10. PLAN IA SHOULD BE PROVIDED FOR NEW WORK

C.B.S. Nos. 2 & 3 SYSTEMS

SHARED SERVICE (MANUAL)

SUBSCRIBER'S EXTENSION PLAN 1B (INTERNAL ONLY)

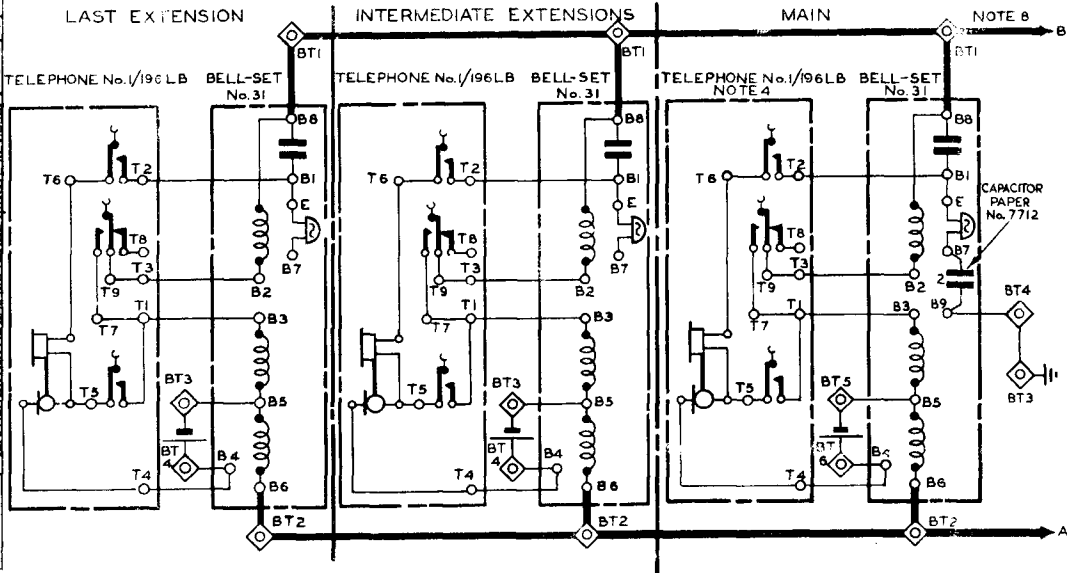
EXPLANATORY

N 4143

6 PANELS-3
15-8-51

USING TELEPHONE No 1/196 LB & BELL-SET No. 31

Y	71	S. 031	C	72	4.57	B
SUPERSESSION NOTE TO ADDER, ALL PANELS MADE YELLOW				MAGNETO		
PANELS 5 & 6 MADE YELLOW.				2 3 8		
CIRCUIT MODIFICATION, MADE 6 PANELS, CAPACITOR No. 7712 WAS INC. No. 10211, NOTE REVISED.				15-8-36		
A				A		



C.B.S. Nos. 2 & 3 SYSTEMS.

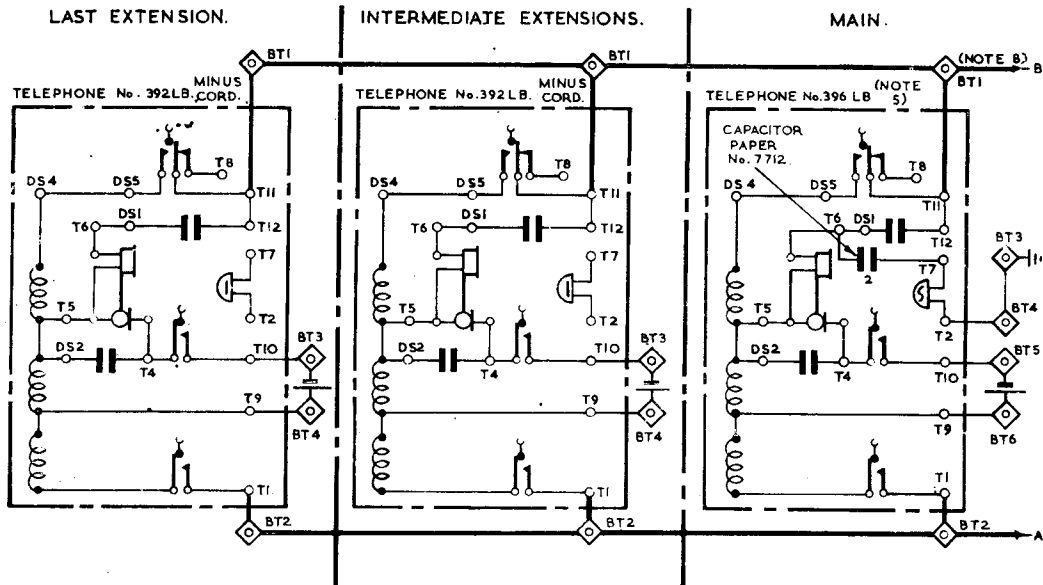
SHARED SERVICE (MANUAL) SUBSCRIBER'S EXTENSION PLAN 1B (INTERNAL ONLY) EXPLANATORY

USING AT THE MAIN, TELEPHONE No. 396 LB & AT THE EXTENSIONS,
TELEPHONE No. 392 LB MINUS CORD.

N 4143.

6 PANELS-5
18-8-51.

Y	SUPERSESSION NOTE 10 ADDED, ALL PANELS MADE YELLOW	21.	5, 6, 3	C
		24-4-57	B	
	PANELS 5 & 6 MADE YELLOW			
	CIRCUIT MODIFICATION MADE 5 PANELS			
	CAPACITOR No. 7712 WAS N.C. No. 234. NOTES REVISED 15-5-56			A



N 4143.

6 PANELS - 6

WIRING.

LAST EXTENSION.

INTERMEDIATE EXTENSIONS.

MAIN.

