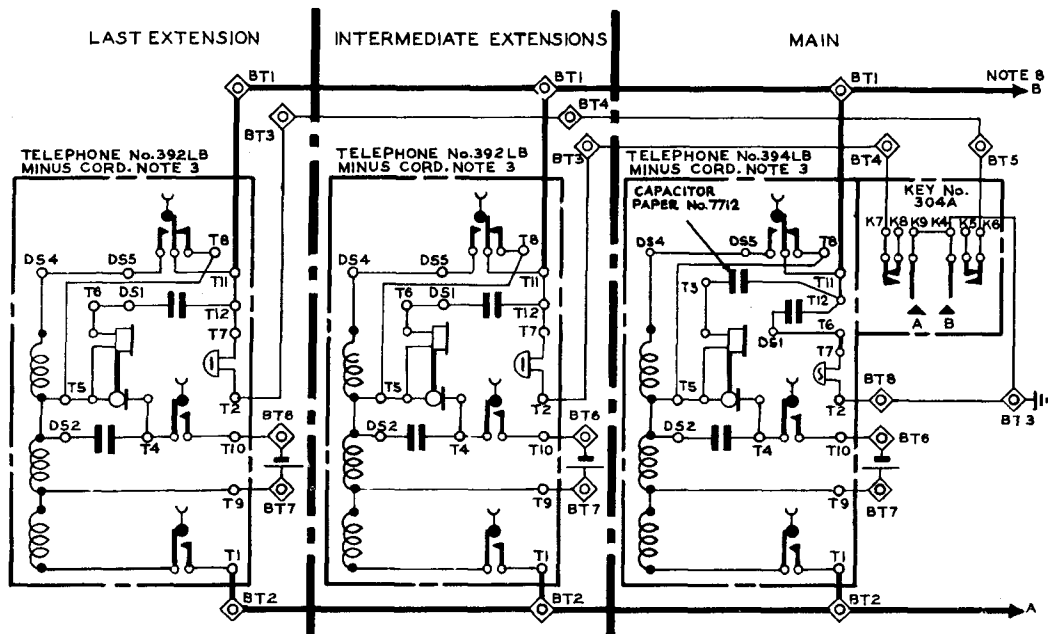


N4141
8 PANELS-2

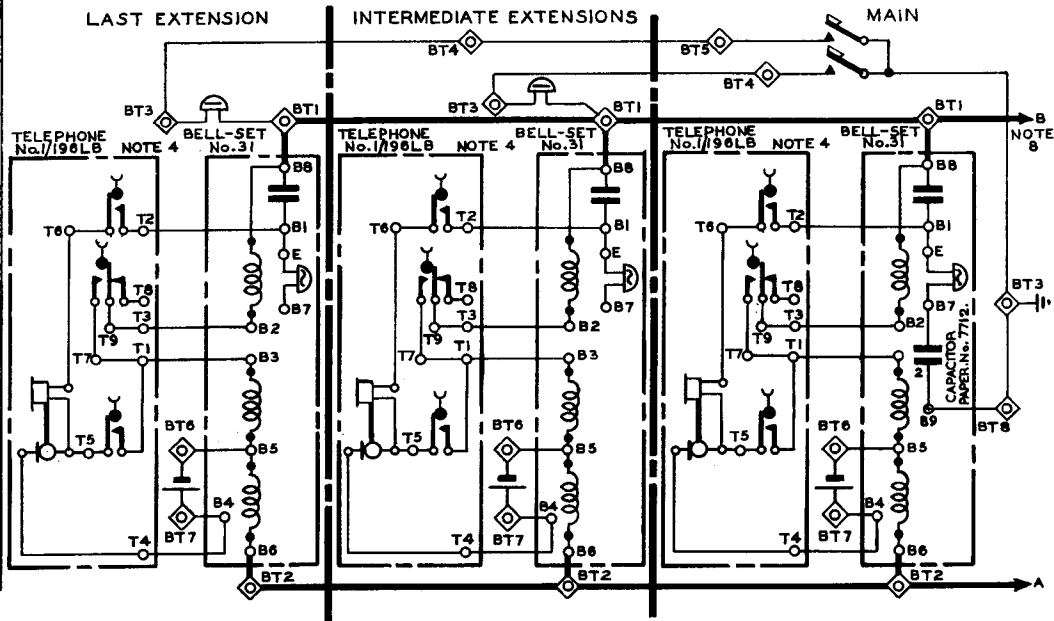
EXPLANATORY
USING AT THE MAIN, TELEPHONE No.394LB MINUS CORD AND AT THE
EXTENSIONS, TELEPHONE No.392LB MINUS CORD



C.B.S. Nos. 2 & 3 SYSTEMS
SHARED SERVICE (MANUAL)
SUBSCRIBER'S EXTENSION PLAN I (INTERNAL ONLY)
EXPLANATORY
 USING TELEPHONE No. 1/196LB AND BELL-SET No. 31

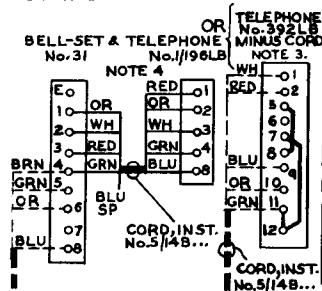
N4141
 6 PANELS-3
 19-6-51

PAPER	W
	PANELS 7 & 8 MADE YELLOW CIRCUIT MODIFICATION MADE 8 PANELS. PANELS 5 & 6 REDRAWN, NOTE 7 AMENDED
	24-4 57 B 8 5 56 A
	CB 2, 3 & MAGNETO

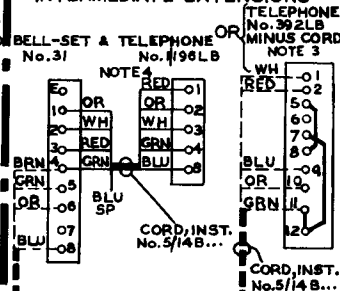


N4141

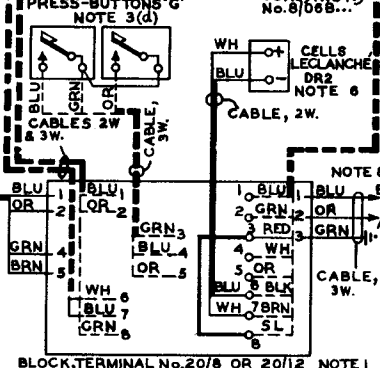
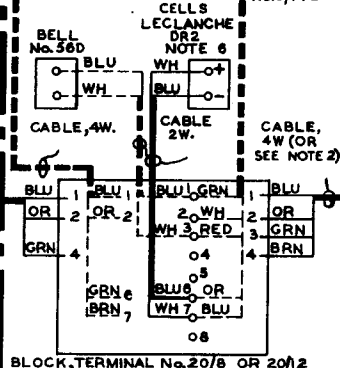
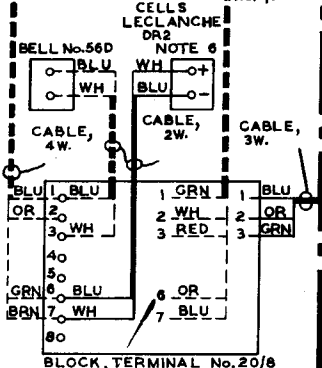
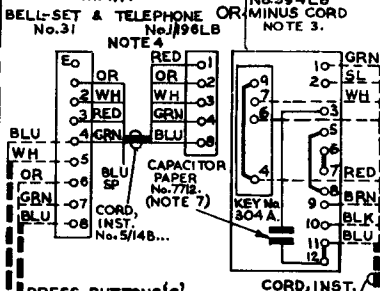
8 PANELS 4 LAST EXTENSION



WIRING INTERMEDIATE EXTENSIONS



MAIN



C.B.S. Nos. 2 & 3 SYSTEMS.

SHARED SERVICE (MANUAL)

SUBSCRIBER'S EXTENSION PLAN I (INTERNAL ONLY).

N 4141
8 PANELS - 5.
19-6-51.

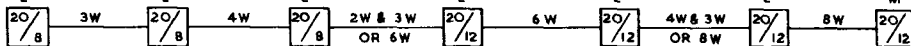
CB 2 3 & MAGNETO	
	24-4-57 B B-5-56 A
PANELS 7 & 8 MADE YELLOW. CIRCUIT MODIFICATION MADE & PANELS PANELS 5 & 6 REDRAWN-NOTE 7 AMENDED.	
W	

NOTES:-

1. FROM ONE TO SIX EXTENSIONS MAY BE FITTED IN ADDITION TO THE MAIN. THE FACILITIES GIVEN BY PLAN I ARE SHOWN ON DGM-N1424. THE INTER-STATION CABLING & THE TYPES OF TERMINAL BLOCK FOR STATIONS IN CONTINUOUS RUN ARE AS FOLLOWS:-

- | | | | | | | | | | | |
|---------|---|--|---|--|---|--|---|--|---|---|
| 1 EXTN | E | | M | | | | | | | |
| 2 EXTNS | E | | E | | M | | | | | |
| 3 EXTNS | E | | E | | E | | | | | |
| 4 EXTNS | E | | E | | E | | M | | | |
| 5 EXTNS | E | | E | | E | | E | | M | |
| 6 EXTNS | E | | E | | E | | E | | E | M |

E = EXTENSION.
M = MAIN.



2. A BRANCHING RUN IN TWO DIRECTION FROM THE MAIN MAY BE ADOPTED.

3. WHEN USING '300 TYPE' TELEPHONES:-

(a) FOR ONE EXTENSION:-

AT MAIN:- IN TELE. No. 394 LB MINUS CORD FIT LABEL No. 252A & KEY No. 302 B-1. CONNECT WIRE FROM MAKE SPRING TO T2 & WIRE FROM MOVING SPRING TO T13. TRANSFER GREEN CONDUCTOR FROM T6 TO T3. STRAP T5 TO T8. CONNECT CAPACITOR No. 7712 TO T3 & T12. JOIN T2 TO BT5 & T13 TO BT3.

AT EXTENSION:- IN TELE. No. 392 LB MINUS CORD CONNECT STRAPS T7-T12 & T5-T8. CONNECT AS FOR LAST EXTENSION AND WIRE DIRECT TO MAIN.

(b) FOR TWO EXTENSIONS:-

AT MAIN:- IN TELE. No. 394 LB MINUS CORD FIT KEY No. 304A AND LABEL No. 252 B. FIT LATCH-BRACKET CONTROL PLATE AS IN FIG.1 OR FIG.5 OF DGM N4301. FIT PLUNGERS IN POSITIONS 'A' & 'B'. TRANSFER GREEN CONDUCTOR FROM T6 TO T3. CONNECT CAPACITOR No. 7712 TO T3 & T12. STRAP K4-K9 & T5-T8.

(b) (CONTINUED)

AT EXTENSIONS:- IN EACH TELEPHONE No. 392 LB MINUS CORD CONNECT STRAPS T7-T12 & T5-T8.

(c) FOR THREE EXTENSIONS:-

AT MAIN:- NOTE 3(b) APPLIES. FIT THIRD PLUNGER IN POSITION 'C'. CONNECT STRAPS K1-K4 & K4-K9. CONNECT BT9 TO K3.

AT EXTENSIONS:- NOTE 3(b) APPLIES.

(d) FOR FOUR TO SIX EXTENSIONS:-

AT MAIN:- NOTE 3(c) APPLIES. FIT PRESS-BUTTONS 'G' FOR EXTENSIONS 4-6. COMMON ALL THE MOVING SPRINGS AND CONNECT TO BT3. CONNECT THE 'MAKE' SPRINGS INDIVIDUALLY TO BT10-BT12 WITH APPROPRIATE SIZE OF CABLE.

AT EXTENSIONS:- NOTE 3(b) APPLIES.

4. WHEN USING TELEPHONE No. 1/196 LB
AND BELL-SET No. 31-

FOR ONE TO SIX EXTENSIONS:- AT ALL STATIONS DISCONNECT STRAP B6-B7 IN BELL-SET No. 31. THE CORD CONNEXION TO T8 IN TELEPHONE No. 1/196 LB IS SPARE IN THIS CIRCUIT. IF REQUIRED TELEPHONE No. 1/196 LB MAY BE TERMINATED ON A BLOCK, TERMINAL No. 20/4 CONNECTED TO THE BELL-SET No. 31 BY CABLE 4W. AT EACH EXTENSION, FIT BELL No. 56A WITH COILS CONNECTED IN SERIES.

5. FOR AN EXTENSION BELL FROM THE MAIN FIT A BELL No. 64 D BETWEEN BT3 AND BT8.

6. FIT CELLS LECLANCHÉ DR2 AS REQUIRED. (SEE E. I. TELEPHONES, STATIONS, A3205).

7. CAPACITOR PAPER No. 7712 SUPERSEDES CAPACITOR MC102 1/2 FOR NEW WORK. CAPACITOR MC102 1/2 WAS FITTED BETWEEN BT3 & BT8. CAPACITOR PAPER No. 7712 SHOULD BE FITTED AS FOLLOWS:-
BELL-SET No. 31 - FIT IN SPACE BETWEEN THE INDUCTION COIL AND THE BELL COILS & RETAIN IN POSITION BY A STRIP OF TAPE PLASTIC ADHESIVE PASSING ROUND THE CAPACITOR & THE INDUCTION COIL.
TELEPHONE No. 394 LB & KEY 302B-1 - FIT TO BACK OF DUMMY DIAL BY A CLIP No. 563/4 IN. USING THE SCREW OPPOSITE THE LUG WITH THE THREADED HOLE.
TELEPHONE No. 394 LB & KEY 304A - FIT ON TELEPHONE CHASSIS & HOLD IN PLACE USING A CLIP No. 563/4 IN. WHICH SHOULD BE FIXED UNDER ONE OF THE BELL FIXING SCREWS.

8. THE DIAGRAM SHOWS CONNEXIONS FOR THE X INSTALLATION. FOR THE Y INSTALLATION REVERSE THE A AND B LINES ON BT1 AND BT2 AT THE MAIN.

C.B.S. Nos. 2 & 3 SYSTEMS.

SHARED SERVICE (MANUAL) SUBSCRIBER'S EXTENSION PLAN I. (INTERNAL ONLY). EXPLANATORY.

USING AT THE MAIN, TELEPHONE No. 394 LB MINUS CORD AND AT THE EXTENSIONS, TELEPHONE No. 392 LB MINUS CORD.

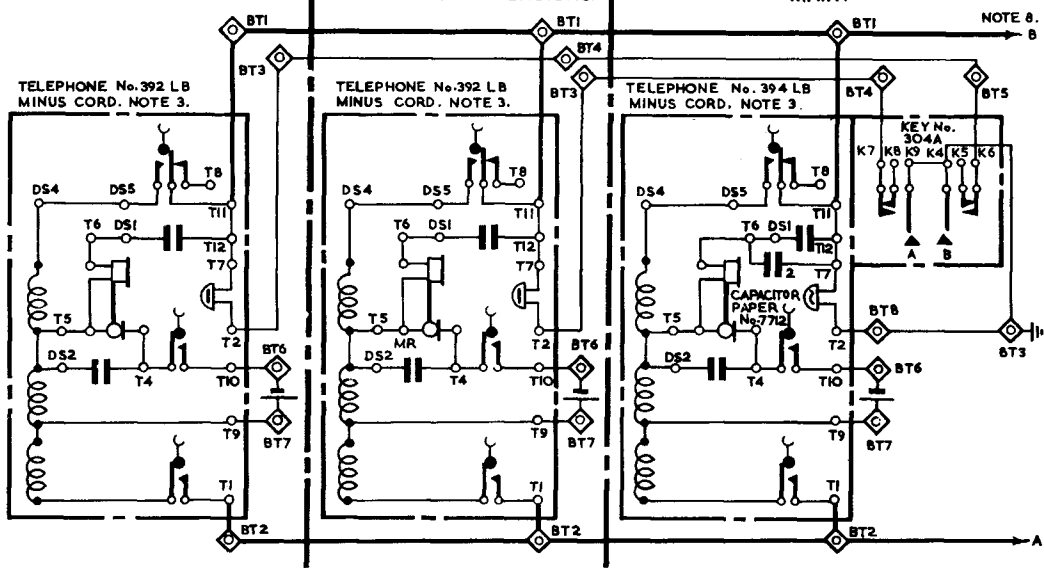
N4141.
8 PANELS-7
19-6-51.

Y	PANELS 7 & 8 MADE YELLOW. CIRCUIT MODIFICATION. MADE 8 PANELS. PANELS 5, 6 & REDRAWN. NOTE 7 AMENDED. 1-1-56 A	24-4-57 B	CB 2 3 & MAGNETO
---	--	-----------	------------------

LAST EXTENSION.

INTERMEDIATE EXTENSIONS.

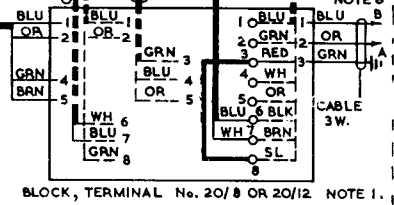
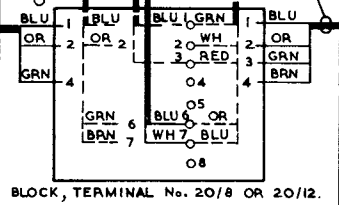
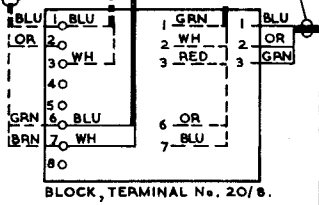
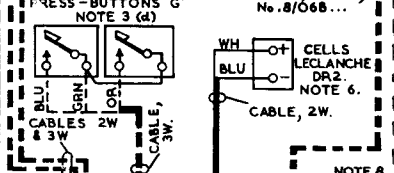
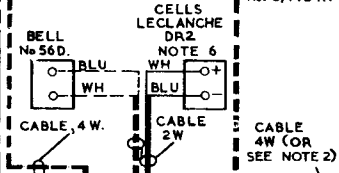
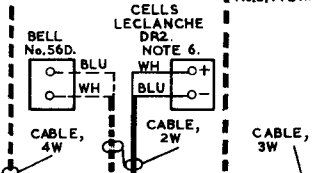
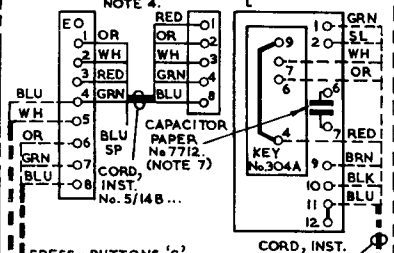
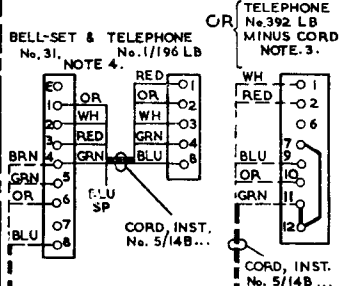
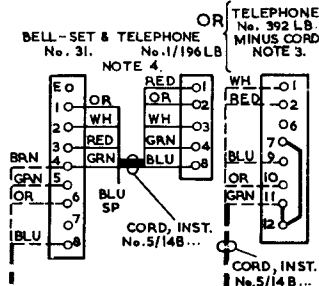
MAIN.



N 4141.
8 PANELS - 8 LAST EXTENSION.

WIRING.
INTERMEDIATE EXTENSIONS.

MAIN.
BELL-SET & TELEPHONE OR TELEPHONE
No. 31. No. 1/196 LB. No. 394 LB.
NOTE 3. NOTE 4. MINUS CORD
NOTE 3.



BLOCK, TERMINAL No. 20/8.

BLOCK, TERMINAL No. 20/8 OR 20/12.

BLOCK, TERMINAL No. 20/8 OR 20/12 NOTE 1.