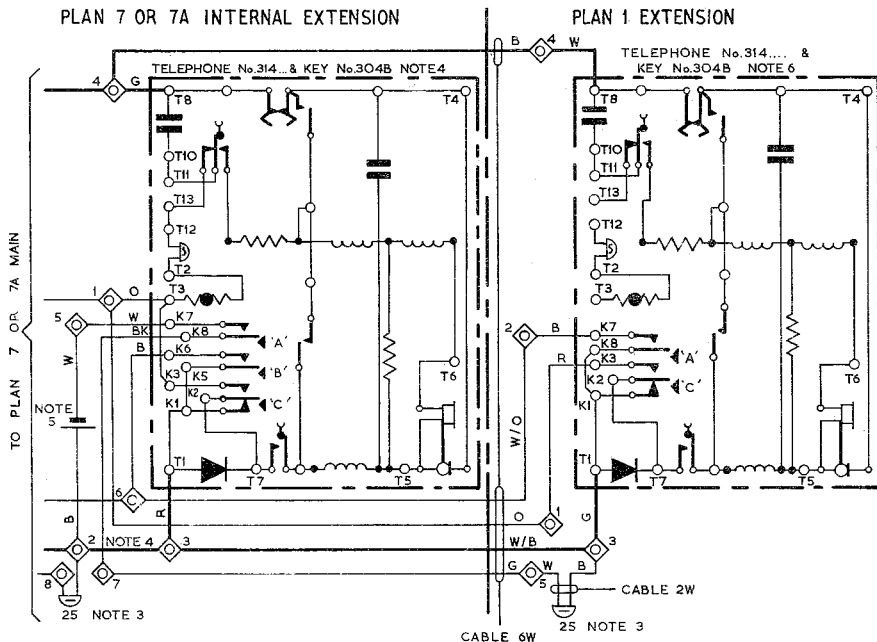


AUTOMATIC SYSTEM

N3937

SHARED SERVICE (SEPARATE METERING) SUBSCRIBER'S
EXTENSION PLAN 1 (INTERNAL ONLY) ON INTERNAL
EXTENSION OF PLAN 7 OR 7A USING TELEPHONE No.314...

ISSUE A



NOTES GENERAL

1. The diagram shows a plan 1 extension connected to the internal extension of a plan 7 or 7A.
2. For plan 7 connexions reference should be made to Dgm. N3928.
3. Connect bell No.56D with coils in parallel.

PLAN 7 OR 7A INTERNAL EXTENSION

4. Fit cord, inst. No.6/21B... and block, terminal No.20/8 & add strap BT2-BT3. Fit key No.304B with three parts No.1/SPL/325 (plungers). Set latch bracket control plate of key as shown on Dgm. N4301 Fig.1. Add straps T1-K1-K5; T3-K3 and T7-K2. Fit label No.252 AC on telephone.
5. Provide 2 cells Leclanché Dr2 & connect with 2W cable between BT2-BT5.

PLAN 1 EXTENSION

6. Fit cord, inst. No.4/57B... and block, terminal No.20/8. Fit key No.304B with two parts No.1/SPL/325 (plungers) in positions A & C in telephone. Set latch bracket control plate of key as shown on Dgm. N4301 Fig.1, disconnect strap T12-T13 & add straps T1-K1-K8 and T7-K2; Fit label No.252U on telephone.

P.O.M.D.
M 2.2.3.

PAPER: W

CIRCULATION
GENERAL

ISSUES		
	A	
	New format.	6. 3. 68
	J. H. Combridge S/1	24-8-54