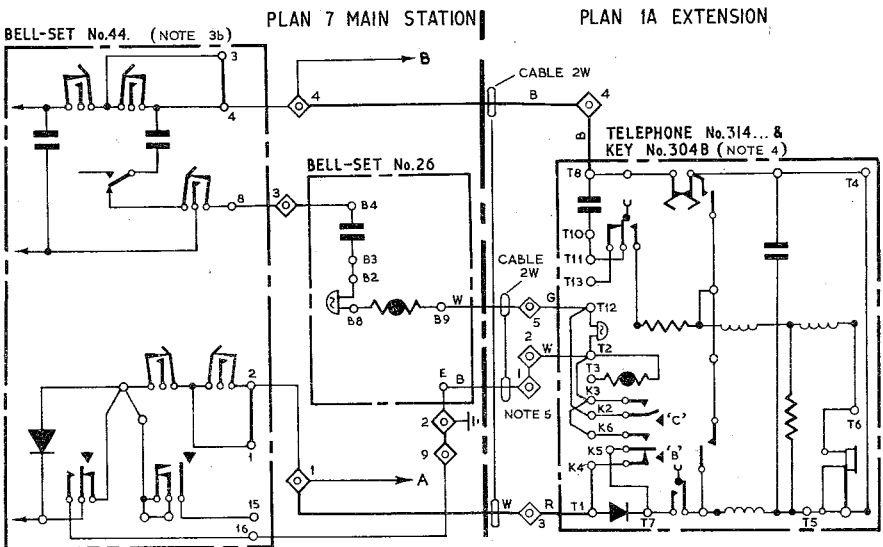
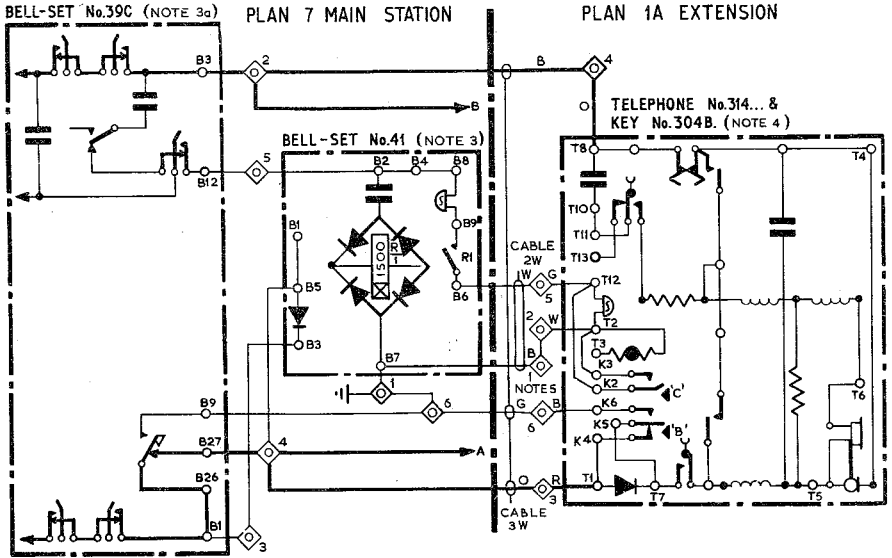


AUTOMATIC SYSTEM

SHARED SERVICE (SEPARATE METERING) SUBSCRIBER'S
 EXTENSION PLAN 1A (INTERNAL ONLY) ON EXCHANGE
 LINE OF EXTENSION PLAN 7 (BELL-SETS Nos. 39C & 44)
 USING TELEPHONE No.314... MINUS CORD.

N3932
 PAGE 1-2
 ISSUE C



Post Office
 Telecomms.
 Headquarters
 Mk 1, 2, 2, 3.
 Paper W
 Circulation
CB & AUTO

ISSUES	C	New format. <i>Rep.</i>	19-8-68
	B	Made 3 panels. Note 3 amended.	19-8-57
		J.H.C. SI/1	20-8-54

NOTES

GENERAL

1. Only one Plan 1A extension may be fitted.
2. The diagram shows a Plan 1A extension on the exchange line of a Plan 7. This arrangement can be used in conjunction with the diagrams listed in note 3.

PLAN 7 MAIN

- 3(a) Bell-set No.39C.
For Plan 7 connexions refer to Dgms. N3858, 3860, 3928 & 3930. Remove strap B6-B7 in Bell-set No.41.
- (b) Bell-set No.44.
For Plan 7 connexions refer to Dgms. N3927 & 3929. Remove strap B9-E in Bell-set No.26.

PLAN 1A EXTENSION

4. Fit Cord, Inst. No.4/57B... to Tele. No.314... & Block Terminal No.20/8. Add strap BT1-BT2. Fit Key No.304B with 3 parts No.1/SPL/325 (Plungers). Set Latch Bracket control plate of key as shown on Dgm. N4301 Fig.6. Remove strap T12-T13; & add connexions T1-K4; T7-K5; T2-K3; K3-K6 & T12-K2. Fit label No.252W.
5. If an extension bell is required connect in place of strap BT1-BT2.