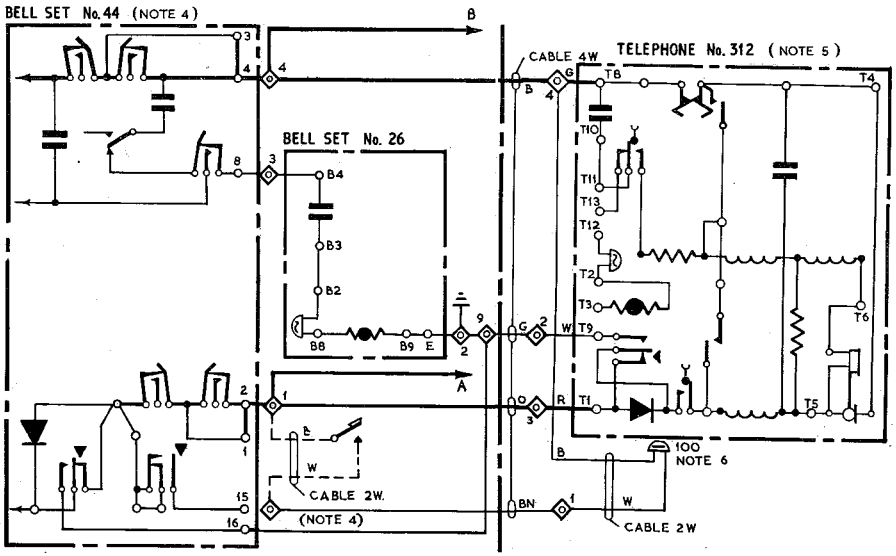
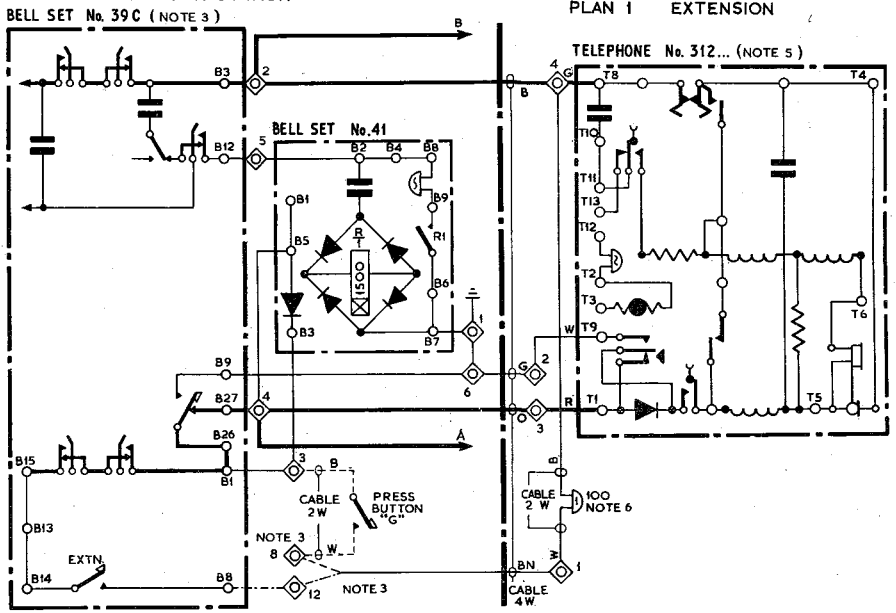


AUTOMATIC SYSTEM
SHARED SERVICE (SEPARATE METERING) SUBSCRIBERS EXTENSION
PLAN 1 (INTERNAL ONLY) ON EXCHANGE LINE OF EXTENSION PLAN 7
(BELL SETS Nos. 39C & 44) USING TELEPHONE No. 312...
PLAN 7 MAIN STATION

N 3931
ISSUE C
PAGE 1-2



Post Office
 Telecomms.
 Headquarters
 Mk 1. 2. 2. 3.

Paper W

Circulation
 CB & AUTO.

ISSUES			
	C	New Format <i>ref.</i>	1. 8. 68
	B	Made 3 panels. Notes amended. Bell set No. 44 added.	3. 9. 57
		J. H. C., S1.	20. 8. 54

N 3931
PAGE 2-2
ISSUE C

NOTES:

1. Only one Plan 1 Extension may be fitted.
2. The diagram shows a Plan 1 Extension on the exchange line of a Plan 7. This arrangement can be used in conjunction with the diagrams listed in Notes 3 and 4.

PLAN 7 MAIN.

3. Bell-Set No.39C.
 - (a) When used with diagrams N3930 and N3860 (External Plan 7's) the unused press button key of the Bell Set No.39C should be used to operate the bell at the Plan 1 Extension. BT12 can be made spare for use with the signalling wire (brown of the 4 wire cable) by disconnecting and insulating the green conductor of the Cord Inst. in the Block Terminal and by transferring the orange conductor of the Cord Inst. from BT11 to BT12.
 - (b) When used with diagrams N3928 and N3858 (Internal Plan 7's) a press button "G" will be required to operate the Bell at the Plan 1 Extension. BT8 can be made spare for use with the signalling wire (brown of the 4 wire cable) by removing the strap between BT7 - BT8 with diagram N3858 it is also necessary to transfer the blue conductor of the 3 wire cable from BT8 to BT 7. The press button "G" should then be connected between BT3 and BT8.

4. Bell-Set No.44.

A press button "G" will be required to operate the bell at the Plan 1 Extension. When used with N3927 (Internal Plan 7) connect Brn of 4 wire cable to BT12 and connect press button "G" between BT12 - BT1. When using N3929 (External Plan 7) remove strap BT5 - BT11. Transfer Grn conductor from BT5 to BT11. Connect press button "G" between BT1 and BT5.

PLAN 1 EXTENSION.

5. Disconnect straps T3 - T9 and T12 - T13. Transfer cord connexion from T3 to T9. Fit Label No.252Q.
6. Bell No.56D coils to be connected in series.