

AUTOMATIC SYSTEM
SHARED SERVICE (SEPARATE METERING)
SUBSCRIBER'S EXTENSION PLANS 7 & 7A (INTERNAL)
USING BELL-SET No.44

N3927
PAGE I-4
ISSUE C

APPARATUS SCHEDULE

MAIN	EXTENSION
1 Bell-set No.44	1 Telephone No.314...
1 Bell-set No.26	1 Label No. 252U
1 Thermistor No.1 A-1 (note 14)	1 Bell No. 56A
1 Telephone No. 248 ... minus base	1 Key No. 304B
1 Box, Battery No.3	1 Cord, Inst. No. 5/14 B
2 or 3 Cells Dry R40 (note 8)	1 Block, Terminal No.35A
	1 Thermistor No.1A-1 (Note 14)

NOTES:-

GENERAL

- 1 For Plans 7 & 7A with external extension using Bell-set No.44 & Tele No.312... on shared service (separate metering) see Dgm N3929. The facilities of Plans 7 & 7A are given on Dgm NI429.
- 2 The connexions shown are for X installations, for Y installations reverse the A and B wires on BT1 and BT4 at the main.
- 3 In damp situations a single cable may be used instead of two smaller cables. Wire colours for the single cable terminations are shown in brackets thus (B). (W/B) signifies white of blue.

MAIN

- 4 Remove Strap BT1-BT2. Connect Strap BT2-BT9.
- 5 In Bell-set No. 44 remove Strap 20-21.
- 6 Remove dummy plates covering the press-buttons of Bell-set No. 44 and screw them to the side of the indicator. Fix "Call Exchange" and "Extn 1" labels over the press-buttons. Remove plungers from the press-button springs and fit them in the conical guides.
- 7 In Bell-set No. 26 remove Strap B7-B8, connect Strap B9-E and fit Thermistor No.1A-1 between B8-B9.
- 8 2 or 3 Cells Dry R40 as required.
- 9 If an extension bell is required remove strap and connect bell between B2 and B3 of Bell-set No.26.
- 10 The diagram shows connexions for Plan 7. For Plan 7A disconnect Straps 1-2, 3-4, 31-32 and 34-35, connect Straps 32-33 and 35-36 in Bell-set No.44.

EXTENSION

- 11 Fit Cord, Inst No.5/14B... and Block, Terminal No.35A and Strap BT1-BT2. Fit Key No.304B with 2 plungers (Part 1/SPL/325) in positions A and C of the telephone. Set latch bracket control plate of key as shown on Dgm N4301, Fig.1. Connect Straps between T1-K1-K8 and T7-K2. Fit Label No.252U on telephone.
- 12 Connect Bell No.56A with coils in parallel.
- 13 If an extension bell is required remove strap and connect bell between BT1 and BT2.

USE OF VALVE ELECTRONIC CV8790

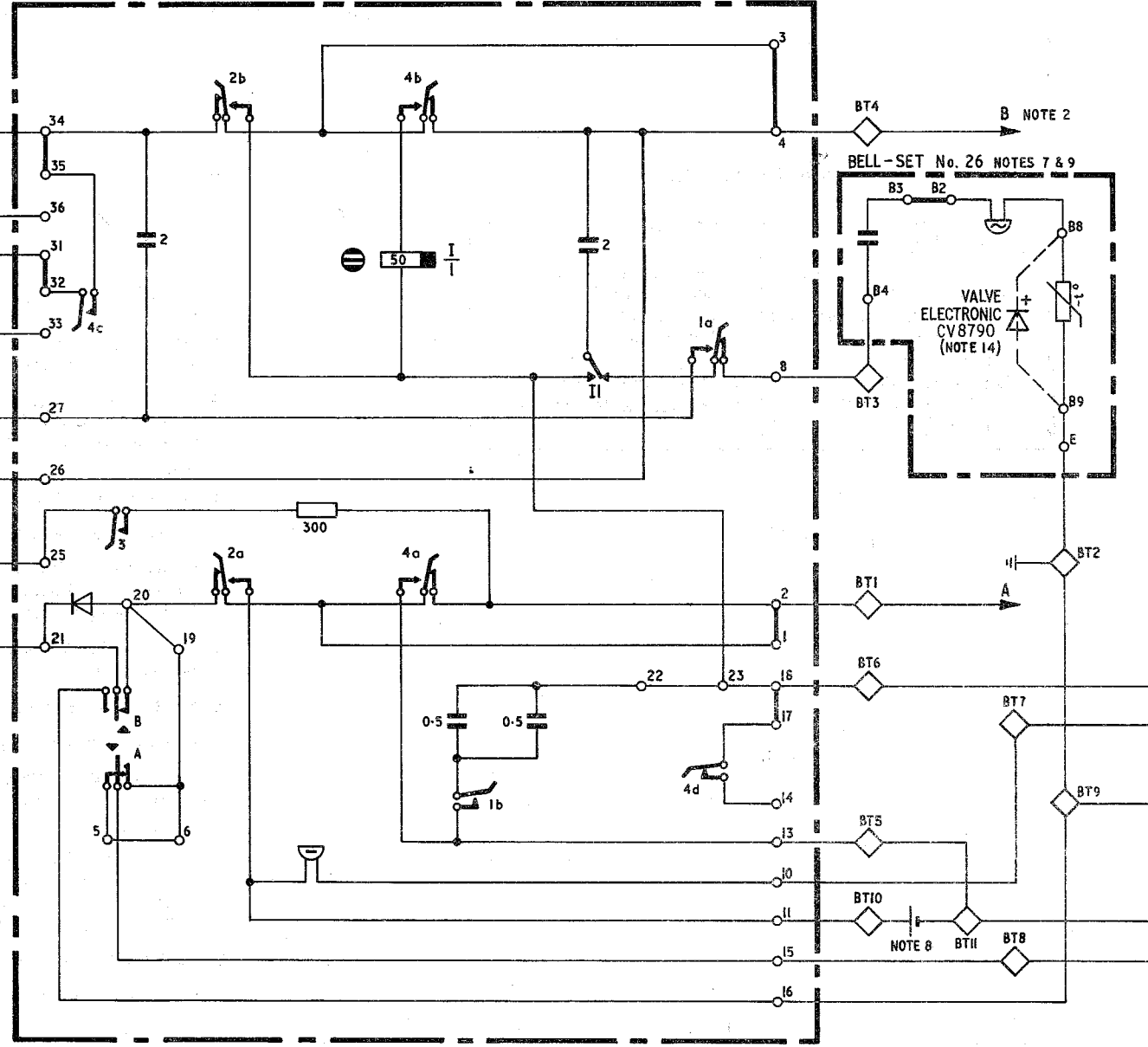
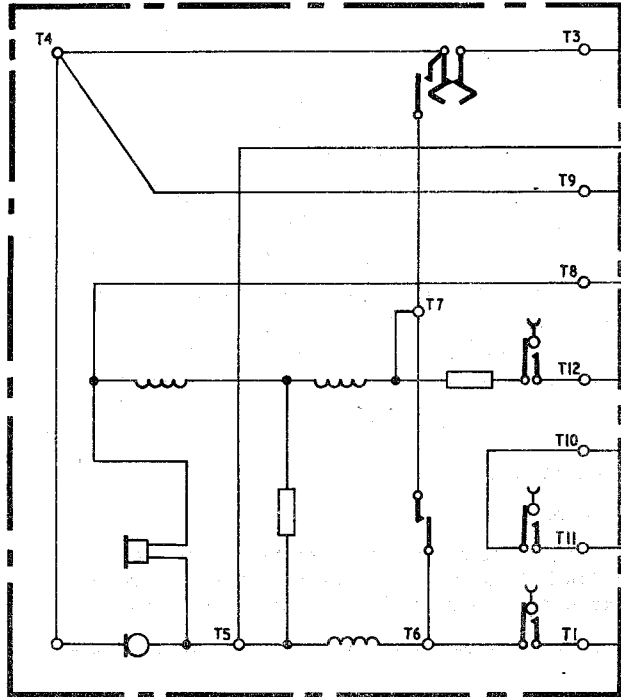
- 14 In UAX areas with vibrator ringing a Valve Electronic CV8790 should also be connected between the terminals shown.

PO TELECOMMS HQRS			
PAPER:- Y	ISSUE		
DISTN:-			
CB & AUTO	C	New format. Minor amendments <i>ML</i>	TD 2.5.1 31-7-73

EXPLANATORY OF MAIN

BELL-SET No. 44 NOTES 5, 6 & 10

TELEPHONE No. 248...



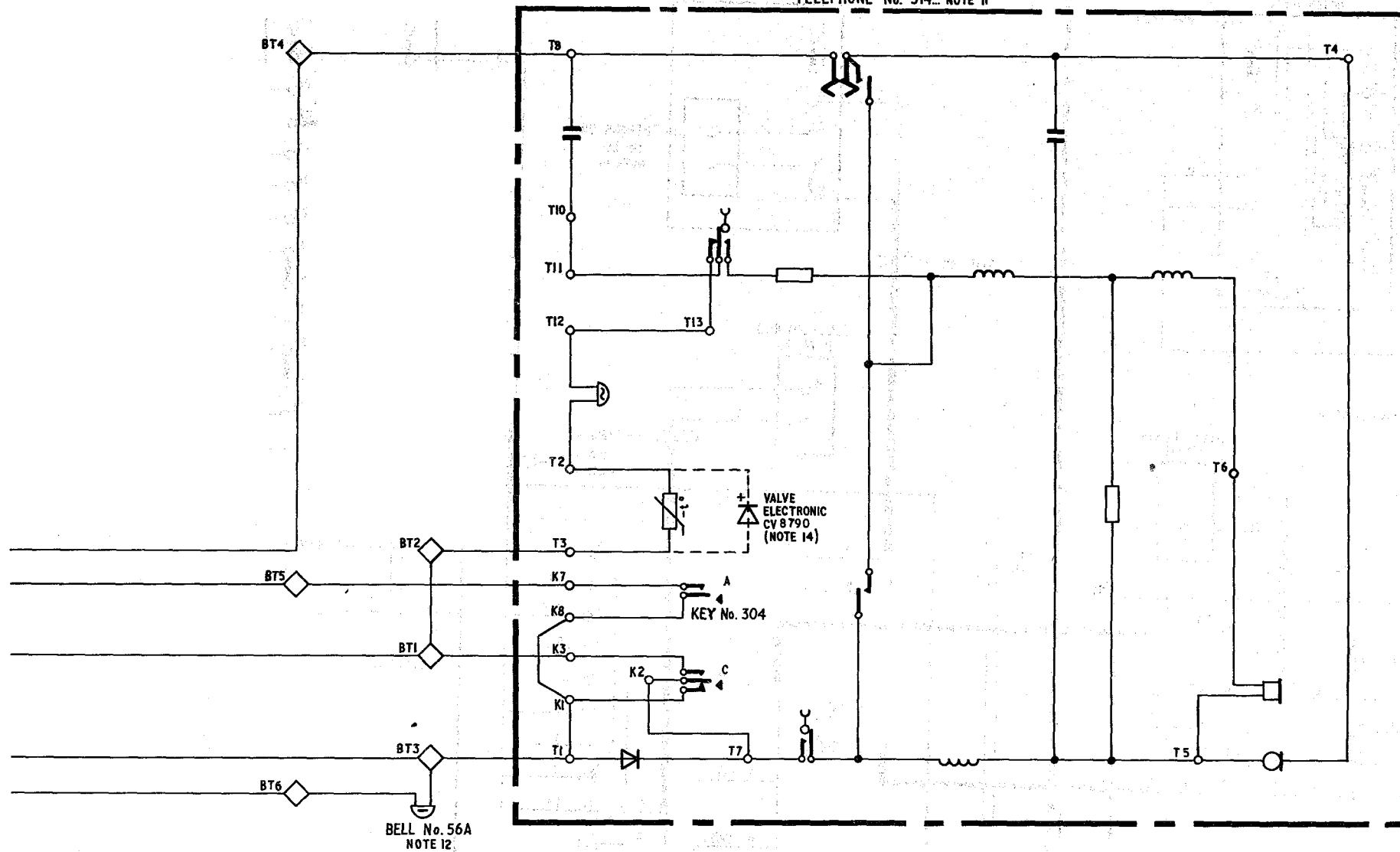
BELL-SET No. 26 NOTES 7 & 9

SWITCHING CONDITIONS OF BELL-SET No. 44

POSITION OF LEVER	CIRCUIT CONDITION	SPRING SETS RELEASED
	SPEAK TO EXTN	2
	SPEAK TO EXCH	1
	HOLD EXCH SPEAK TO EXTN	2 & 3
	EXTN TO EXCH	4

EXPLANATORY OF EXTENSION

TELEPHONE No. 314... NOTE II

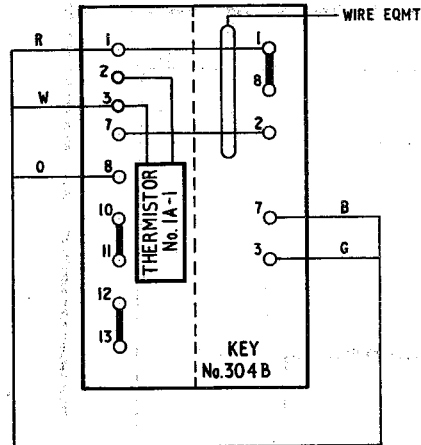


WIRING

MAIN

EXTENSION

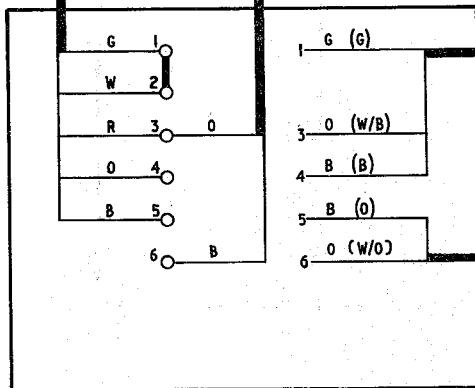
TELEPHONE No. 314...
WITH KEY No. 304B
NOTES 11 & 14



CORD, INST. No. 5/14B

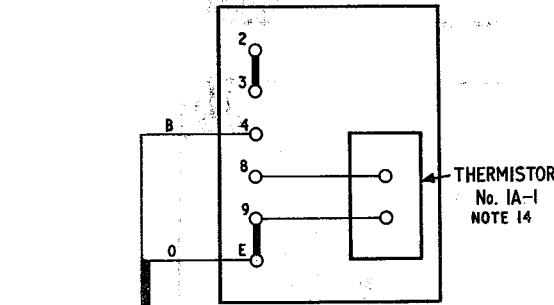
BELL No. 56A
NOTE 12

CABLE 4W

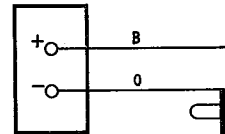


BLOCK, TERMINAL No. 35A NOTE 13

BELL-SET No. 26
NOTES 7 & 9

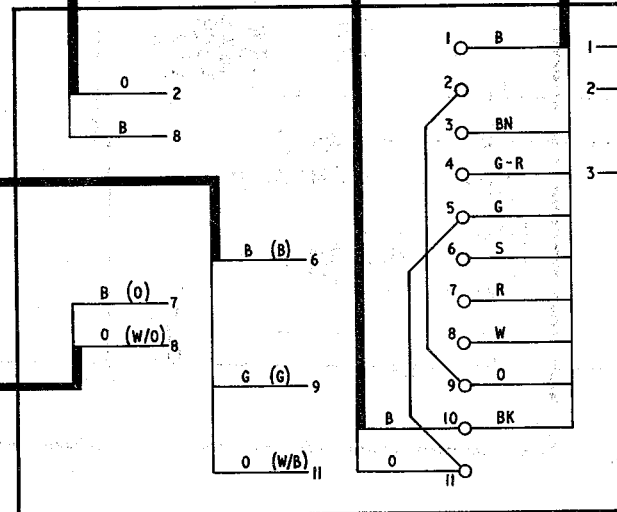


CELLS DRY R40
NOTE 8



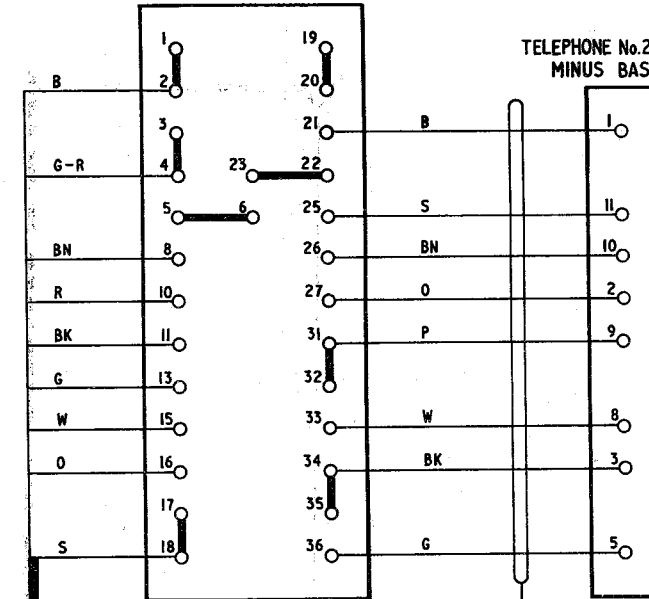
CABLE 4W
CORD INST
No. 9/19H

CABLES
4W OR 8W
NOTE 3



BLOCK TERMINAL No. 20/12 NOTE 4

BELL-SET No. 44
NOTES 5, 6 & 10



CORD, INST
No. 8/10E

TELEPHONE No. 248...
MINUS BASE

