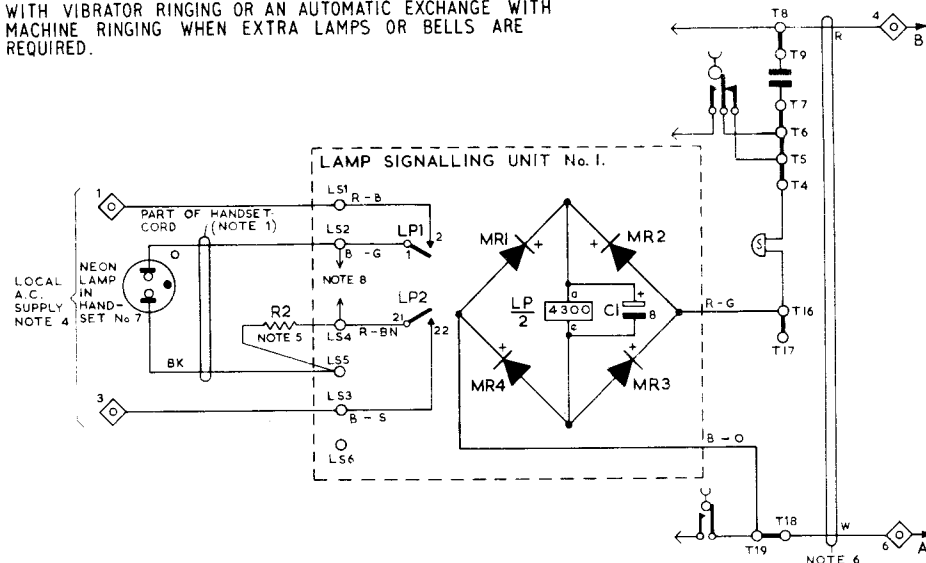
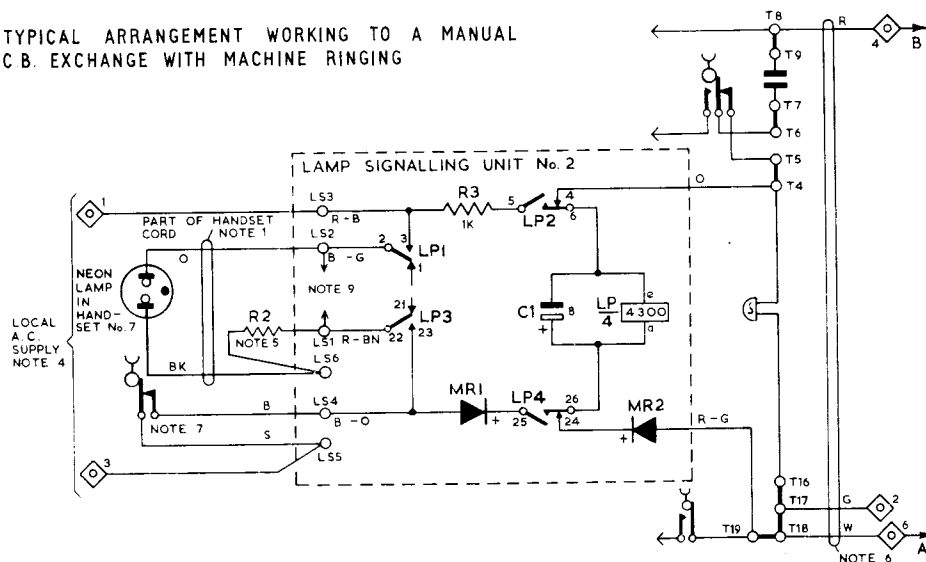


TYPICAL ARRANGEMENT WORKING TO AN AUTOMATIC EXCHANGE WITH VIBRATOR RINGING OR AN AUTOMATIC EXCHANGE WITH MACHINE RINGING WHEN EXTRA LAMPS OR BELLS ARE REQUIRED.



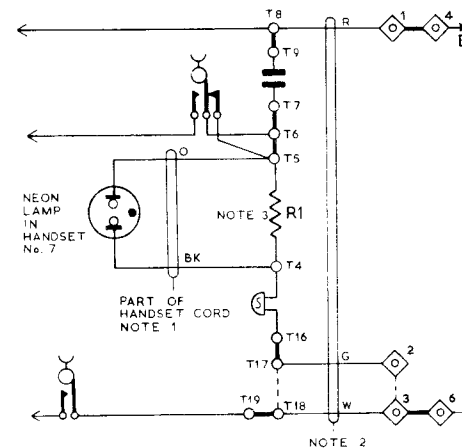
TYPICAL ARRANGEMENT WORKING TO A MANUAL C.B. EXCHANGE WITH MACHINE RINGING



HANDSET No.7 USED WITH TELEPHONES No 706,710,711,740,741 & 746

N.1901
ISSUE B

TYPICAL ARRANGEMENT WORKING TO AN AUTOMATIC EXCHANGE WITH MACHINE RINGING.



NOTES:-

1. The Transmitter and Receiver Conductors of the Handset No.7 Cord replace the existing Handset Cord Conductors on Terminals T1, T2, T3 & T10.

AUTO. EXCHANGE WITH MACHINE RINGING

2. Only one extension bell is permitted in the arrangement. It should be connected in place of strap T17 & T18 on Teles.No.710 & 711, or strap BT2 & BT3 on Tele.No.706. Where more bells are required, lamp-signalling unit No.1 should be used in conjunction with

a local 17 C/S or 25 C/S ringing supply.

3. For one bell only, R1 is a resistor, carbon No.26 KD, 15 K Ω For two bells, R1 is a resistor, carbon No.26 KD, 100 K Ω

AUTO. EXCHANGE WITH VIBRATOR RINGING AND C.B. EXCHANGE.

4. Local A.C. supply may be 75v. 50 C/S from transformer No.431A or No. 431B to light neon lamps only, or 75v. 17 C/S, 75v. 25 C/S. from a ringing machine, 60v. 25 C/S from a converter ringing No.4 or No.5 to operate bells as well.
5. Where a 75v. local A.C. supply is used, R2 is a resistor, carbon No.26 KD. 15 K Ω ; where a 60v. local A.C. supply is used, R2 is a resistor, carbon No.26 KD, 1500 Ω
6. The Line Cord and Block Terminal should be changed, if necessary, to suit the individual requirements of the installation.
7. Additionally on C.B. exchanges provide auxiliary gravity switch spring set, Part 1/DSP/1252 for Tele.No.706; Part 1/DSP/1242 for Tele.No.710 or Part 1/DSP/1269 for Tele.No.711.
8. LS2 and LS4 should be extended via the Line Cord to the Block Terminal for connecting extra neon lamps and bells when required.
9. Extension bells may be connected in the normal manner. LS1 and LS2 should be extended via the Line Cord to the Block Terminal for connecting extra neon lamps and for connecting bells when continuous signals are required.

P.O.
TELECOMMS.
HQRS.

PAPER : W
CIRCULATION
C.B. & AUTO

ISSUES

ISSUES			
B	SPRING NUMBERING L.S.U. No.2 AMENDED.	16 - 2 - 70	
A	NEW FORMAT	23 - 10 - 67	
	F.E.TROKE S1	4 - 6 - 63	

TD 2.3.1 SECTION