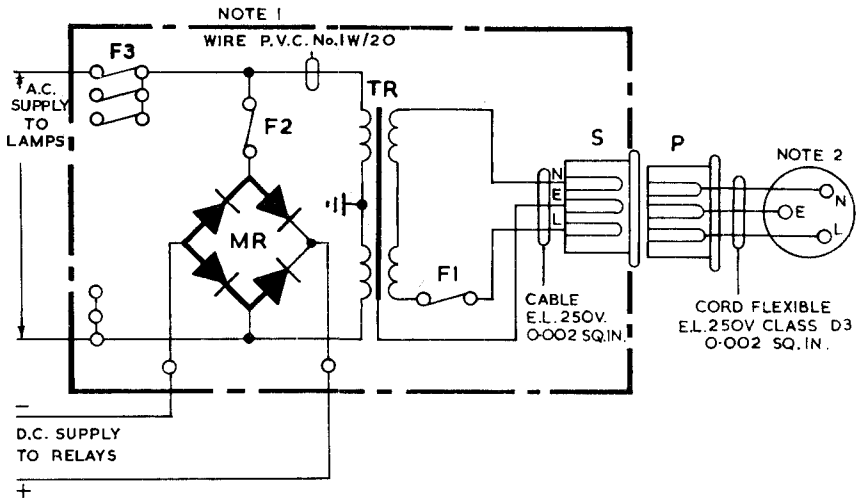


# LOW VOLTAGE CONTINUOUS LAMP SIGNALLING POWER UNIT

TO SUPPLY MAXIMUM OF 15 RELAYS AND  
LAMPS (MANUAL C.B. AREAS)

**NI885**  
**ISSUE B**



Item	Qty.	Description
S	1	Connector socket mains No.4
P	1	Connector plug main No.4
TR	1	Transformer No.142A. 1 per max. of 15 lamps and relays.
MR		Rectifier element SE 22
F1	1	Fuse 36A/ 0.35 fuse mounting 136A
F2	1	Fuse 36/ 0.25 fuse mounting 136A
F3	As Reqd	Fuse 36A/0.5 1 per 5 lamps, fuse mounting 136A

### NOTES

- Transformer and mains fuse should be protected by mounting in a case No. 90 or other suitable housing. The cover should be signwritten in red 'Danger... Volts A.C.' The wiring etc. associated with mains voltage should be adequately separated from those working at a low voltage and all metal including the transformer and case (if metal) not normally carrying current should be effectively earthed.
- The subscriber should supply a 3 pin power outlet socket wired to IEE regulations with plug which should be fitted adjacent to the power unit and connected to A.C. mains (250V max.) and an efficient earth.

P.O.E.D. S BCH.	ISSUES			
PAPER: R CIRCULATION SPECIAL	ISSUES	B	New format, Minor amendments.	2 - 6 - 67
		A	TR was No.142	4 - 2 - 64
			SI., E. Seymour	22 - 1 - 59