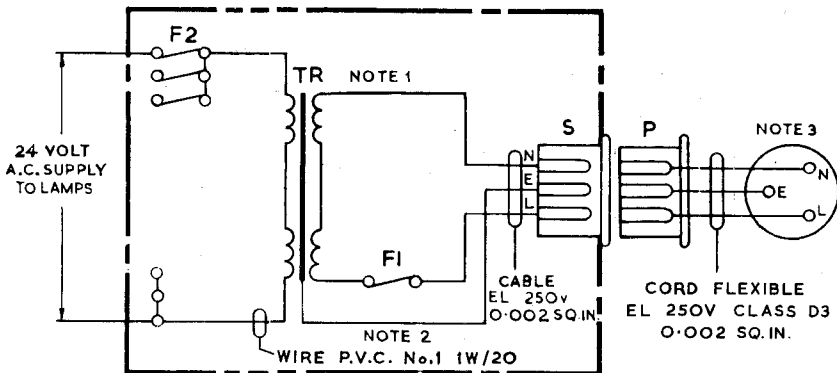


**LOW VOLTAGE DISCONTINUOUS LAMP  
SIGNALLING POWER UNIT  
TO SUPPLY MAXIMUM OF 30 2·8 WATT LAMPS**

**N1884  
ISSUE A**



Item	Qty.	Description
S	1	Connector-socket mains No. 4
P	1	Connector-plug mains No. 4
TR	1	Transformer No. 142A 1 per max. of 30 2·8W lamps. Note 1.
F1	1	Fuse No. 36A/0·5 fuse mounting No. 136A
F2	As req'd	Fuse No. 36A/0·5 1 per 5 lamps, fuse mounting No. 136A.

**NOTES**

1. Transformer No. 142A can be used to supply a maximum of 30-2·8W lamps only on discontinuous signalling due to the diversity factor. Where signals are continuous the maximum is reduced to 15.
2. The transformer and mains fuse must be protected by a cover which should be made up locally. Connectors plug and socket mains No. 4 should be fitted to ensure that the cover cannot be removed without first disconnecting the mains. The wiring and terminals associated with apparatus operating at mains voltage should be adequately separated from those working at a lower voltage. Insulating bushes should be used whenever conductors pass through metal parts. All metalwork not normally required to carry current such as the transformer core and protective cover (if metal) should be earthed. A cautionary notice in red should be signwritten on the cover, the recommended wording is "Danger...Volts A.C."
3. The subscriber should supply a 3 pin power outlet socket wired to IEE regulations with plug which should be fitted adjacent to the transformer and connected to A.C. mains supply (250V max.) and an efficient earth.

P. O. E. D. S. B. C. H.	ISSUES			
PAPER: R				
CIRCULATION SPECIAL		A	New format, Minor amendments SI., E. Seymour	<i>efw.</i> 2-6-67 22-1-59