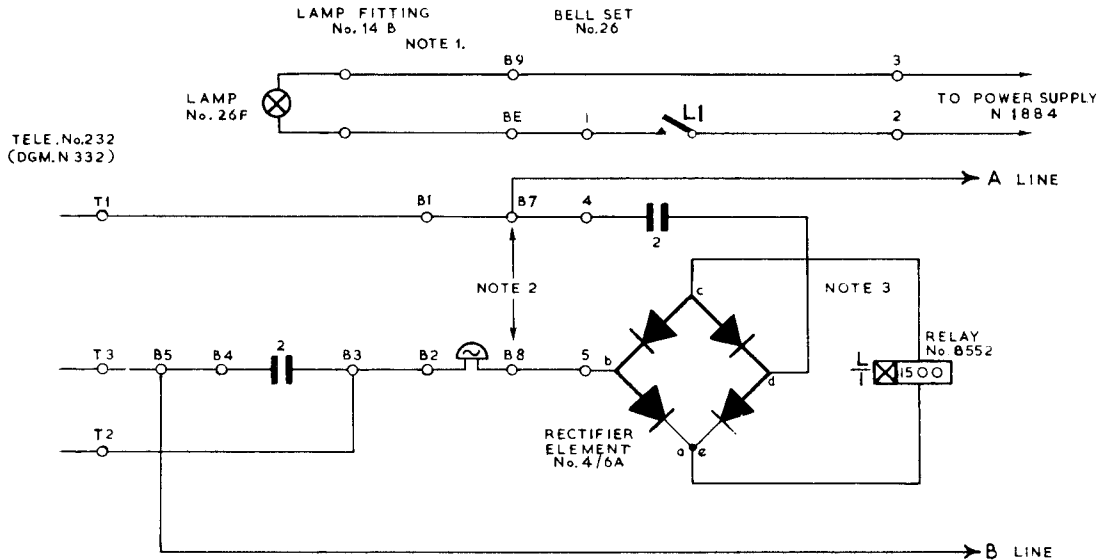


LOW VOLTAGE DISCONTINUOUS LAMP SIGNALLING
USING TELE No.232 AND BELL SET No. 26 (AUTO AREAS ONLY)

N1882
ISSUE B

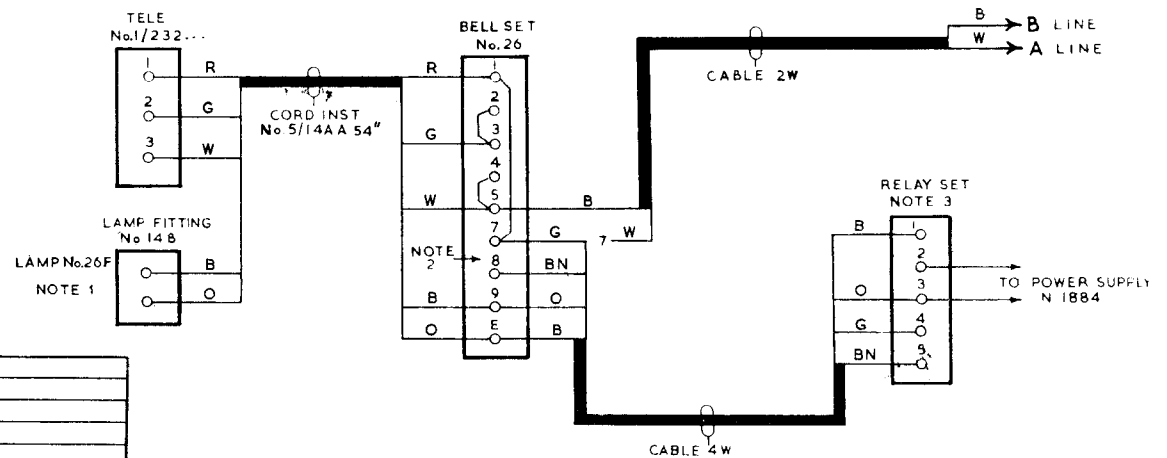
SCHMATIC



NOTES

- 1 Fit tag strip of Lamp Fitting No. 14B under nuts on Tele. terminals T1 and T2.
- 2 Remove strap between terminals 7 and 8 of Bell Set No. 26.
- 3 Relay Set to be made up locally consists of:-
 - 1 Relay No. 8552.
 - 1 Capacitor paper No. 7710.
 - 1 Rectifier Element 4/6 A.
 - 1 Mounting No. 151/2A.
 - 1 Bracket, Mounting AZ.
 - 1 Bracket, Mounting CZ.
 - 1 Relay cover AP.
 - 1 Block Terminal 21/5.

WIRING



P.O.E.D. S BCH.			
PAPER: W			
CIRCULATION			
C.B & AUTO			
ISSUES			
B	New format. Minor amendments.	<i>efw</i>	8-6-67
A	Card inst. was 5/4B circulation changed.		11-1-62
	E.Seymour, S1		6-2-59