

HANDSET No.14A. AMPLIFYING TELEPHONE HANDSET.

FIG.1. LINE POWERED.

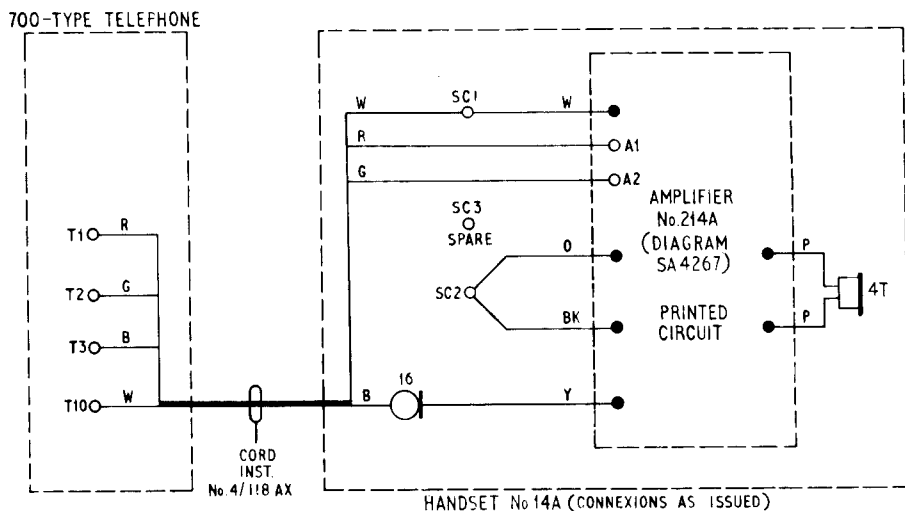
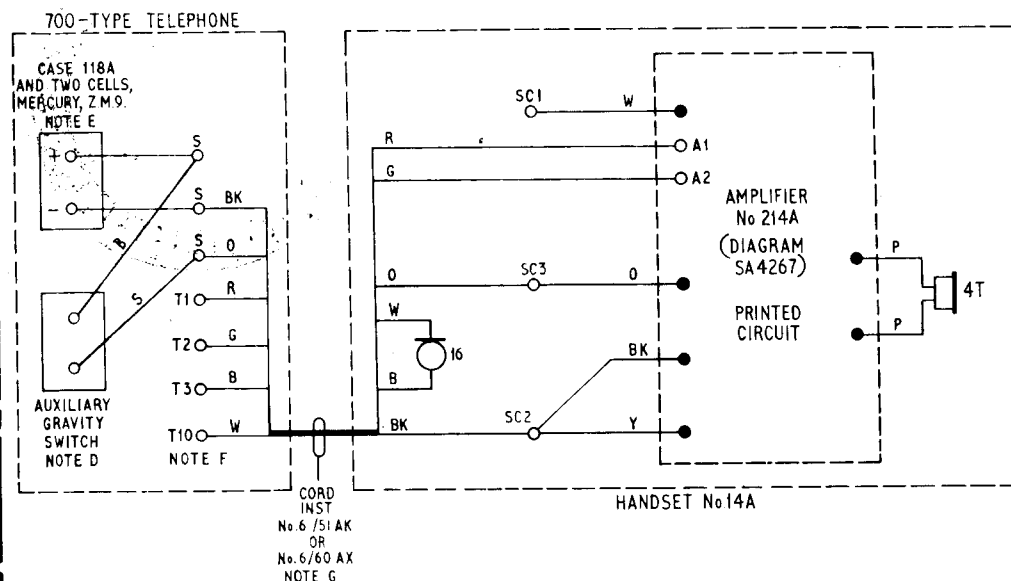


FIG.2. LOCAL BATTERY POWERED



NOTES:—

- A. Recover existing handset and cord and connect Handset No.14A as shown.
- B. When Handset No.14A is connected as shown in Fig.1, the transmitter current is reduced. In cases where this current is found to be below 26mA, the handset must be connected as shown in Fig.2.
- C. When replacing the receiver, care should be taken to ensure that the rubber pad insulates the receiver from contact with the printed circuit.

REFERENCES:—

- Maintenance TI E5B 5314
- Installation TIC3B 2131

NOTES:—

- A. This arrangement is only to be used on Local Battery installations or when the circuit shown in Fig.1 results in a transmitter current less than 26mA.
- B. Recover Cord 4/118 AX from Handset No.14A, shift the orange lead from SC2 to SC3, shift the yellow lead from the transmitter to SC2 and fit Cord as shown.
- C. Fit the Case 118A and the auxiliary gravity switch as shown. The terminals marked 'S' are any convenient spare terminals.
- D. The auxiliary gravity switch for use with Telephones 740 and 746 is a switch 19B-1. For other telephones see N4700.
- E. The Two Cells, Mallory type Z.M.9, are to be purchased locally. Other types of cell must not be used.
- F. On Local Battery installations the white conductor of the Handset Cord should be transferred from T10 to T11 as shown on the relevant telephone diagram.
- G. Cord Inst.No.6/60 AX will supersede Cord Inst.No.6/51 AK when stocks of the latter are exhausted.
- H. When replacing the receiver care should be taken to ensure that the rubber pad insulates the receiver from contact with the printed circuit.
- J. Local Battery must be used on MF Keyphones (otherwise the confidence tone is lost).

P.O. TELECOMMS. HQRS.	ISSUE			
		B	REFERENCES AND NOTE J ADDED. <i>ll</i>	ME/PD 1-1-3 5-5-81
		A	Cord titles changed. Fig.1, note C added. Fig.2, notes G & H added note B amended. Term. SC4 deleted.	<i>P.E.</i> TD 7-1-1 10-12-74
			<i>ll</i>	TD 2-3-1 SECTION 18-6-71