

CIRCULATION

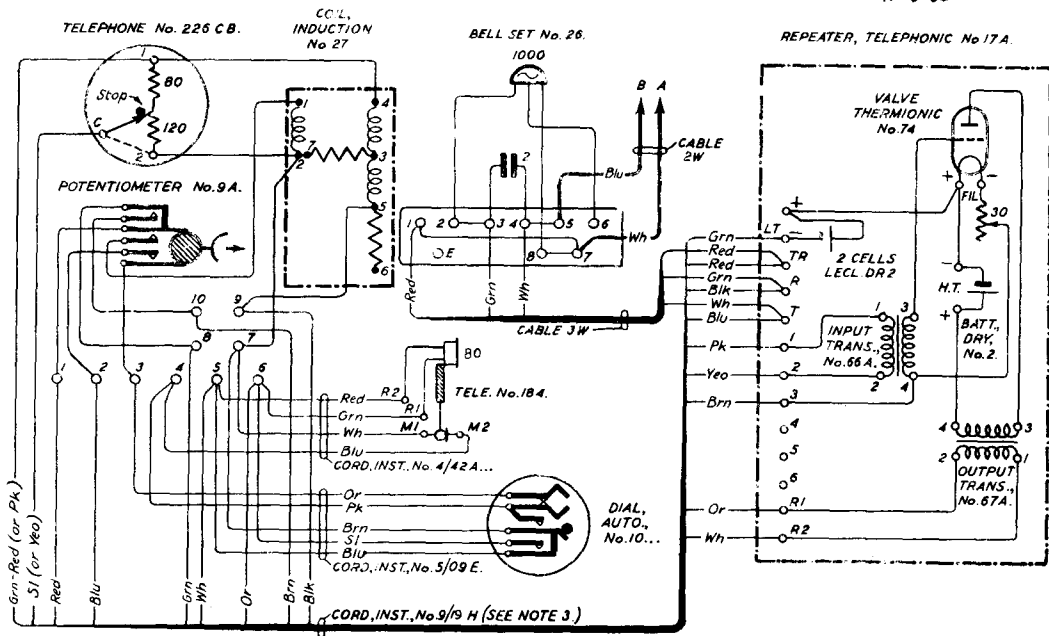
C.B. & AUTO.

REPEATER TELEPHONIC No. 17A.

CONNECTIONS FOR AUTOMATIC SYSTEM

N 1802
2 PANELS - 1
17-9-34

COIL INDUCTION No. 27 WAS No. 20
CARD INST No. 9/19 H WAS No. 9/10 H
Grn - Red (or Pk) was Pk. Sl (or Yeo) was
Yeo. Dial number AT 2644 deleted.
Redrawn, Bell Set No. 26 amended.
Amendment

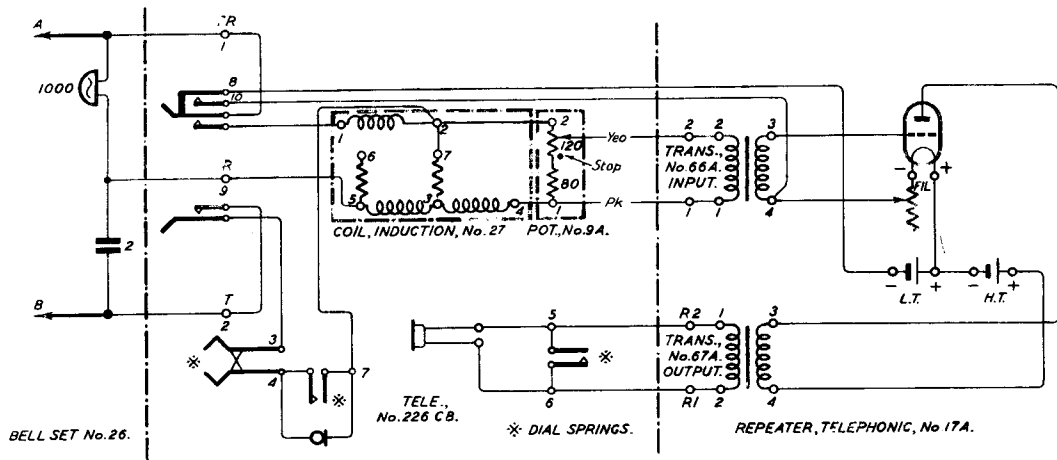


W

N/802

2 PANELS - 2

EXPLANATORY DIAGRAM FOR AUTOMATIC SYSTEM.



NOTES:-

1. THE FOLLOWING MODIFICATIONS SHOULD BE MADE ON "TELEPHONE No. 226 CB"-
 - (a) REMOVE STRAP BETWEEN TERMINALS Nos. 3 & 4.
 - (b) RECOVER "DIAL, AUTO DUMMY No. 3", "FIT DIAL, AUTO., No. 10" & "CORD. INST., No. 5/09E" AS SHOWN.
2. REMOVE STRAP & CONNECT EXTENSION BELL BETWEEN TERMINALS Nos. 7 & 8 ON BELL SET No. 26 WHEN REQUIRED.
3. A "BLOCK TERMINAL No. 20/12" MAY BE FITTED WHEN REQUIRED, AND A CABLE 12W RUN BETWEEN THE STRIP AND THE "REPEATER, TELEPHONIC, No. 17A."