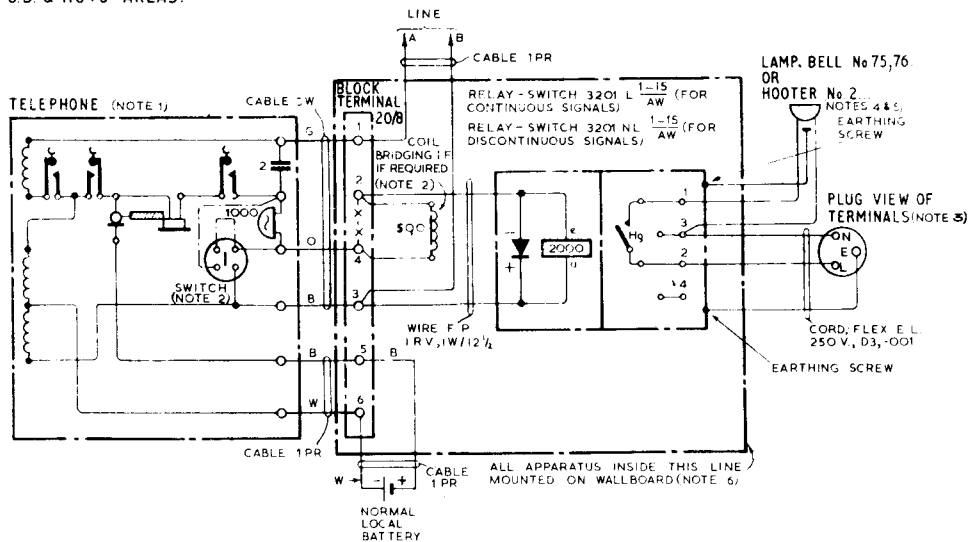


FOR CBS 2 & 3 & MAGNETO SYSTEMS (INCLUDING PRIVATE WIRES) & LONG LINES,
C.B. & AUTO AREAS.



NOTES:-

1. Schematic only. For details of telephone connexions and wiring see: Block, C.B. & AUTO Terminal 20/4 replaces the "Relay-Set" on NI871. Terminals NI871. are numbered to correspond.
C.B.S. 2 & 3 & Mag.(including Block, Terminal 20/8 replaces the "Relay-Set" on NI872. Terminals 1-4 are numbered to correspond. Wires connected to Private Wires) B & 9 on the "Relay-Set" in NI872 go instead to 5 & 6 on & Long Lines Block, Terminal. C.B. & Auto. NI872.
C.B.S.1 If a mains-operated loud bell, hooter or lamp signal without gravity-switch control is required, the application should be forwarded to the E-in-C., S.I, C with the voltage (and frequency if A.C.) of the subscriber's mains supply & details of voltage & capacity of any nearby P.BX. battery or exchange power lead.
2. If switch is arranged to short-circuit bell when lamp is in use (see NI871 or NI872) fit coil, bridging as shown in dotted lines. Where a loud bell or hooter is fitted, a switch, tumbler IM only should be wired in parallel with Relay-Switch; knob to point "off" when contacts are closed.
3. Subscriber should provide a 5 amp. 3 pin B.S.I. wall-socket with plug adjacent to Relay-Switch, & connect thereto the mains supply (250v. max) & an efficient earth connexion.
4. Lamp may be provided by the Subscriber, or the Dept. will supply a lamp with surface wiring (internal only). The apparatus to be fitted is shown on Page 2.
5. For hooter 2... (formerly buzzer 22) or bell 75,76 use cable, E.L.. 250v .002 in 3/4" screwed conduit. With bell 75,76 a conduit reducer 2 will be required. For lamp, use cable E.L. I.R.V. core 250v. .001 twin flat, bonding sheath to lampholder. If lead-covered cable is unacceptable to the supply authority, use conduit 2 with a lampholder 1A & conduit box 1G. Hooter No.2C is not suitable for continuous signals (Relay-Switch 3201 NL switching only).
6. Apparatus should be mounted on wallboard...X...if a Relay-Switch 3201L.. is used this must be fitted where the release button will be accessible to a person answering the telephone.

PO TELECOMMS HQRS	ISSUES				
		D	NOTE 5 AMENDED.	TD 7.1.3 22.6.79	
		C	NEW FORMAT. MINOR AMENDMENTS	23-10-67	
		B	REDRAWN NOTES AMENDED PANELS 3 & 4 ADDED	31-10-39	
		A	REDRAWN NOTES AMENDED	4-3-37	
PAPER: W		GCM	LP ABE	FBC	21-11-36
CIRCULATION GENERAL					

LIST OF APPARATUS TO BE REQUISITIONED

FOR NEW WORK		
<p>1 Relay-Switch 3201, L or NL, 1-15 1 Block Terminal 20/4. ^{AW} 1 Coil Bridging IF (if required) 1 Wallboard...X... Cable, I.R.V., IPR., 3W. & 4W/12½ or E & C.C.../10 Wire, F.P., I.R.V., 1W/12½ Cord, Flex., E.L. 250v., Class D3, -001</p> <p>Bell No. 75.. } As required:- Bell No. 76 } Requisitions to state voltage or } (250 max.) and frequency Hooter No. 2.. } (if A.C.) of mains supply.</p>	<p>TELEPHONES - C.B. & AUTO.</p> <p>1 Tele. 1/232... } 1 Bell Set 26 } 1 Switch, Tumbler } IM or 17 } OR { 2 Labels 21 } 1 Tele. 328... (if req'd) } minus cord } 1 Cord, Inst. 3/62B... } 1 Key 304A } 2 Plungers, Part } SPL/325 } 1 Label 252 M } 1 Block, Terml. 20/8</p>	<p>TELEPHONES - G.B.S. 2 & 3 & MAGNETO ETC.</p> <p>1 Tele. 1/196 LB. } 1 Bell Set 31 } 1 Switch, Tumbler } IM or 17 } OR { 2 Labels 21 } 1 Tele. 394 LB. (if req'd) } minus cord } 1 Cord, Inst. 5/14B } 1 Key 304A } 1 Label No. 252M } 2 Plungers, Part } SPL/325 } 1 Block Terml. 20/8</p>
	<p>IF DEPT. PROVIDES LAMP CIRCUIT</p>	
		<p>1 Lamp, General Service, 25 Watts...Volts (250v. Max.)</p> <p>1 Lampholder 5 } 1 Block Polished } Hardwood, 2 } OR { 1 Clip, Bonding 6 } 1 Lampholder 1A Cable, E.L., I.R.V. } 1 Conduit Box 1G. Core 250v.-002, } Cable, E.L. 250v.-002. Twin Flat. } Conduit 2 & Fittings.</p>