

SWITCHBOARDS AT 711, AT 1800 & CB 873

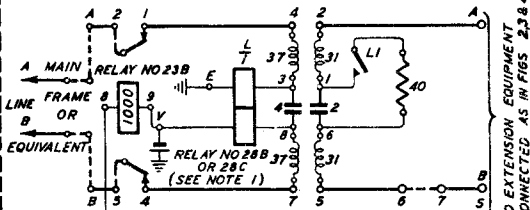
LONG PRIVATE WIRES.

N 1087

1. 4. 27

SUPERSEDES N 954 FIG 2
SUPERSEDED FOR NEW WORK ON CB 873 BY
N 715.

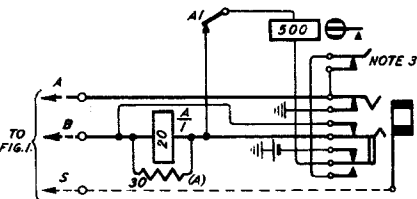
FIG. 1. AUXILIARY EQUIPMENT



FIT UNIT AA NO. 18 & RELAY 23B (SEE ALSO NOTE 1)

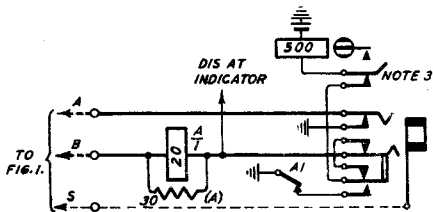
TO EXTENSION EQUIPMENT
CONNECTED AS IN FIGS. 2, 3 & 4

FIG. 2. MODIFIED EXT'N EQUIPMENT ON SWITCHBOARDS AT 711 & ON EARLY ISSUES OF SWITCHBOARDS CB 873



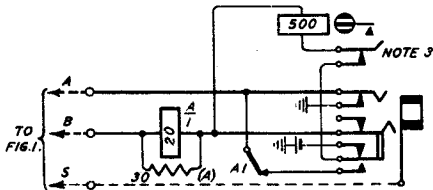
CONNECT S WIRE TO BUSH OF JACK

FIG. 3. MODIFIED EXTENSION EQUIPMENT ON SWITCHBOARDS AT 1800



CONNECT S WIRE TO BUSH OF JACK

FIG. 4. MODIFIED EXTENSION EQUIPMENT ON LATER ISSUES OF SWITCHBOARDS CB. 873



CONNECT S WIRE TO BUSH OF JACK.

NOTES.

1. THIS CIRCUIT ARRANGEMENT WILL BE USED FOR LINES EXCEEDING 50 OHMS LOOP RESISTANCE. WHEN REQUIREMENTS PERMIT THE USE OF A CB TELEPHONE A RELAY No. 28 B WILL BE FITTED IN PLACE OF THE RELAY 28 C SUPPLIED WITH THE UNIT.

2. FOR INTERNAL CONNEXIONS OF UNIT AA No. 18 (MARK 234 & 235) SEE N 938.
 " " " 4 RELAYS UNIT AA No. 18 (MARK 3 & 4) " N 986.

3. INDICATES NIGHT SWITCHING KEY WHERE FITTED.

4. DOTTED LINES INDICATE NEW CONNEXIONS

5. A GENERATOR No. B... SHOULD BE FITTED IF DIFFICULTY IS EXPERIENCED IN RINGING THE DISTANT END.

6. WHEN THE LINE CONDITIONS ARE SUCH THAT AUTOMATIC SIGNALLING CANNOT BE PROVIDED THE CIRCUIT SHOULD BE WIRED TO N 1084.

Amendment.					
	17/2/51	B			
	6-7/51	C			
	18/9/51	D			
SUPPN. NOTE ADDED, MADE YELLOW					
Redrawn. Dual No. AT 1907 deleted.					
Tables amended Dual Nos. deleted.					

Y