

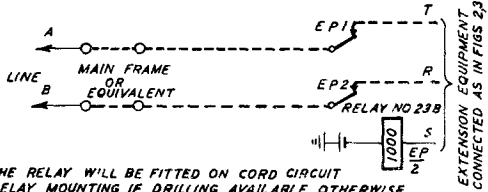
SWITCHBOARDS AT 711, AT 1800 & CB 873. SHORT PRIVATE WIRES.

N1086
1. 4. 27

SUPERSEDES N954 FIG 1
CB 873 BY N715.

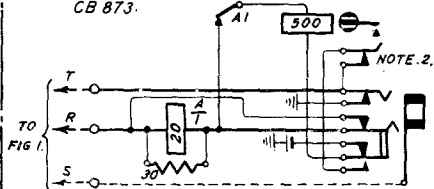
SUPPN. NOTE REVISED, MADE YELLOW Redrawn no amendment Title amended. Draw. No. AT 1086 A selected Fig. 3 amended Amendment.	09.62 C
	12.5.31
	17.4.37 B
	18.9.31 A

FIG. 1. AUXILIARY EQUIPMENT.



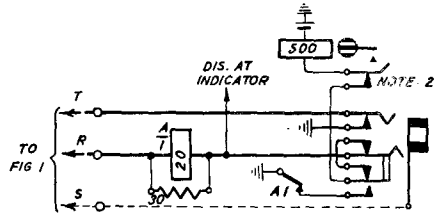
THE RELAY WILL BE FITTED ON CORD CIRCUIT RELAY MOUNTING IF DRILLING AVAILABLE, OTHERWISE FIT ON MOUNTING 5B/1A NEAR RELAYS.

FIG. 2. MODIFIED EXTENSION EQUIPMENT ON SW/BDS AT 711 & ON EARLY ISSUES OF SW/BDS CB 873.



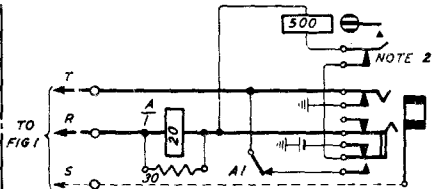
CONNECT "S" WIRE TO BUSH OF JACK.

FIG. 3. MODIFIED EXTENSION EQUIPMENT ON SWITCHBOARDS AT 1800.



CONNECT "S" WIRE TO BUSH OF JACK.

FIG. 4. MODIFIED EXTENSION EQUIPMENT ON LATER ISSUES OF SWITCHBOARDS CB 873.



CONNECT "S" WIRE TO BUSH OF JACK.

- NOTES
1. THIS CIRCUIT ARRANGEMENT WILL BE USED FOR PRIVATE WIRES NOT EXCEEDING 50 OHMS LOOP RESISTANCE.
 2. NIGHT SWITCHING KEY WHERE FITTED.
 3. DOTTED LINES INDICATE NEW CONNECTIONS.

Y