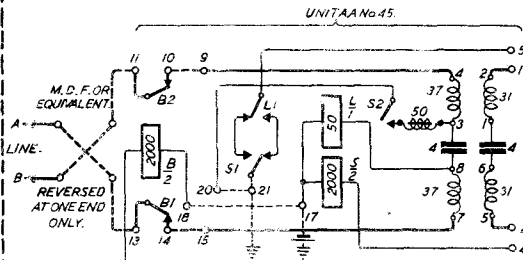


# SWITCHBOARDS AT 711, AT 1800 & CB873.

## LONG INTER-SWITCHBOARD PRIVATE WIRES, WITH AUTOMATIC CLEARING.

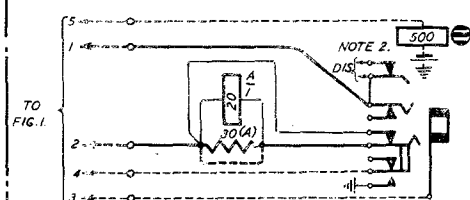
SUPERSEDES N956. N1085  
 FIG. 3. 1-4-27  
 SUPERSEDED FOR NEW WORK ON  
 SWBD. CB873 BY N 710.

FIG.1. AUXILIARY EQUIPMENT.



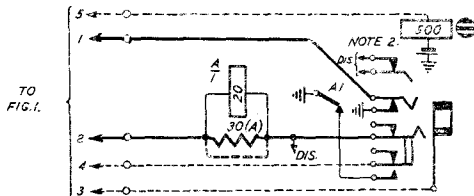
FOR INTERNAL EXTNS OF UNIT AA No. 45 (MARK 3) SEE N 997.

FIG.2. MODIFIED EXTENSION EQUIPMENT ON SWITCHBOARDS AT 711 &amp; EARLY ISSUES OF SWITCHBOARDS CB873.



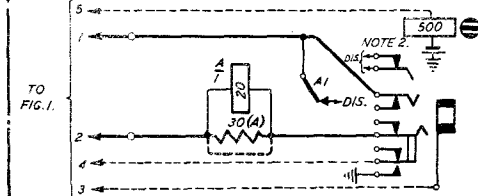
DISCONNECT ALL WIRES FROM AUXILIARY SPRINGS OF JACK AND INDICATOR. TRANSFER EARTH CONNECTION FROM INNER TIP SPRING TO OUTER AUXILIARY SPRING OF JACK. MAKE NEW CONNECTIONS SHOWN. SHORT CIRCUIT RELAY A.

FIG3 MODIFIED EXTENSION EQUIPMENT ON SWITCHBOARDS AT 1800.



DISCONNECT NIGHT SWITCHING KEY WIRES FROM INDICATOR AND LONG AUXILIARY SPRING OF JACK. MAKE NEW CONNECTIONS SHOWN. SHORT CIRCUIT RELAY A.

FIG4 MODIFIED EXTENSION EQUIPMENT ON LATER ISSUES OF SWITCHBOARDS C.B 873.



DISCONNECT ALL WIRES FROM AUXILIARY SPRINGS OF JACK AND INDICATOR. TRANSFER EARTH CONNECTION FROM INNER TIP SPRING TO OUTER AUXILIARY SPRING OF JACK. MAKE NEW CONNECTIONS SHOWN. SHORT CIRCUIT RELAY A.

NOTES. 1. THIS CIRCUIT ARRANGEMENT WILL BE USED ON LINES EXCEEDING 250 OHMS RESISTANCE BUT ONLY WHEN TWO OR MORE SUCH LINES ARE CONNECTED TO ONE SWITCHBOARD AND INTERCOMMUNICATION BETWEEN THEM IS REQUIRED.  
 2. NIGHT SWITCHING KEY WHEN FITTED. 3 DOTTED LINES INDICATE NEW CONNECTIONS.

Amendment.  
 SUPPN. NOTE ADDED, MADE YELLOW  
 09.62 B  
 6/17/38  
 CEN. B. W. NO. AMENDMENT  
 TITLE AMENDED. IDIAL NO. ATTCBS DELETED.  
 7-2-37 A