

# SWITCHBOARDS AT 711, AT1800 & CB873.

## LONG INTER-SWITCHBOARD PRIVATE CCTS.

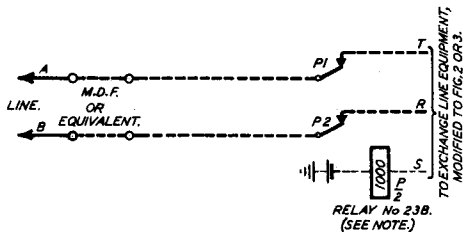
SUPERSEDED FOR NEW WORK BY N716.

N1084

1-4-27

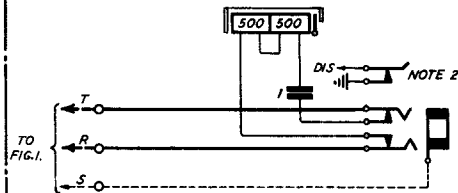
SUPERSEDED FOR NEW WORK ON SWITCHBOARDS C.B. 873 BY N 985

FIG.1. AUXILIARY EQUIPMENT.



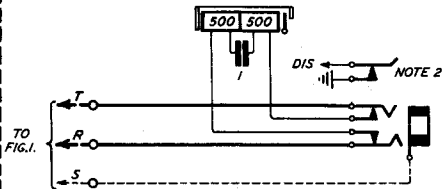
THE RELAY WILL BE FITTED ON CORD CIRCUIT RELAY MOUNTING IF DRILLING AVAILABLE, OTHERWISE FIT ON MOUNTING 5B/1A NEAR OTHER RELAYS.

FIG.2. MODIFIED EXCHANGE LINE EQUIPMENT ON SWITCHBOARDS AT 711 & EARLY ISSUES OF SWITCHBOARDS CB.873



TRANSFER INDICATOR & CONDENSOR CONNECTIONS TO INNER SPRINGS OF JACK. DISCONNECT EARTH WIRE FROM, & CONNECT 'S' WIRE TO BUSH OF JACK.

FIG.3. MODIFIED EXCHANGE LINE EQUIPMENT ON SWITCHBOARDS AT 1800 & LATER ISSUES OF SWITCHBOARDS CB.873.



DISCONNECT EARTH WIRE FROM, & CONNECT 'S' WIRE TO BUSH OF JACK.

NOTES.

1. THIS CIRCUIT ARRANGEMENT WILL BE USED FOR LINES EXCEEDING 250 OHMS LOOP RESISTANCE.
2. NIGHT SWITCHING KEY WHEN FITTED.
3. DOTTED LINES INDICATE NEW CONNECTIONS.

23-501 C	23-501 B	23-501 A
23-501 C	23-501 B	23-501 A
23-501 C	23-501 B	23-501 A
23-501 C	23-501 B	23-501 A

SUPERSESSION NOTE AMENDED.  
 SUPERSESSION NOTE AMENDED.  
 REVISION NO. AMENDMENT.  
 TITLE AMENDED. DUAL NO. AT 1800 DELETED.

Amendment

Y