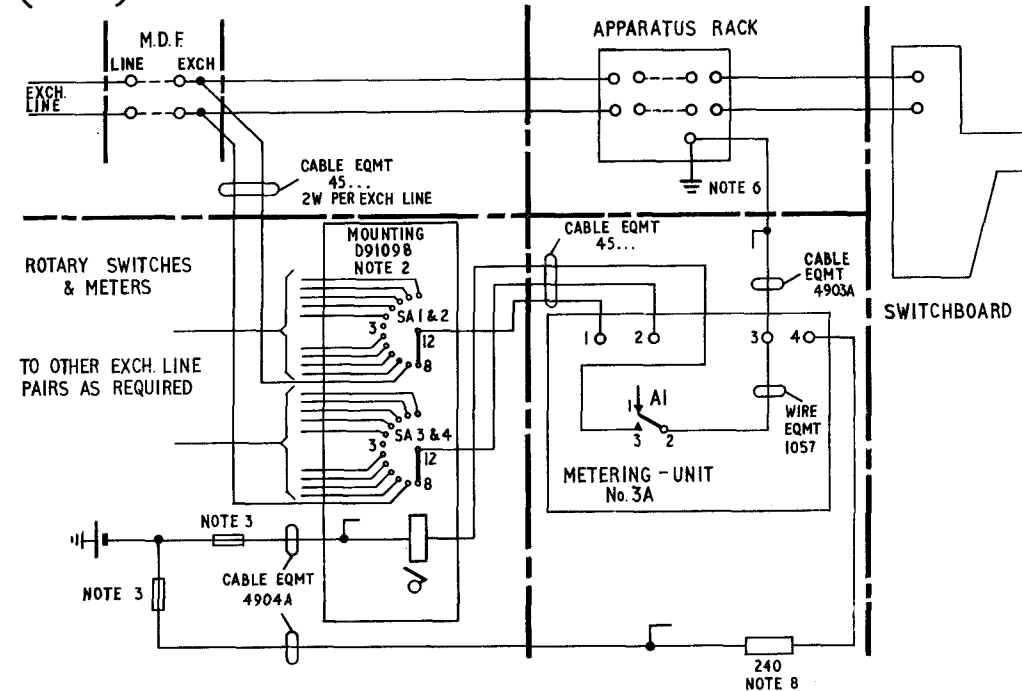


**S.T.D. METERING AT PMBX's**  
**MULTIPLE TYPE SWITCHBOARDS (NOTE 1)**  
**SCHEME C1 (NOTE 5)**

| SCHEDULE OF APPARATUS          |   |
|--------------------------------|---|
| DESCRIPTION                    | No. OFF   |
| Fuses                          | As required to suit individual installations                                      |
| Fuse-Mountings                 | As required to suit individual installations                                      |
| Inductor, Coil No.172A         | 1 per exch. line to be metered at non-through clearing installations (See Note 5) |
| Knob, Instrument No.8          | 1 per Switch Rotary CD5022  |
| Label No.364 (A,B or C) Note 4 | As required (Note 4)  |
| Label No.359 (A,B or C) Note 4 | As required (Note 4)  |
| Label, Dummy No.1              | As required   |
| Meter No.21A                   | 1 per Metering-Unit No.3A (Not B.E.C.B. No.10 installations)                      |
| Meter No.21B                   | 1 per Metering-Unit No.3A at B.E.C.B. No.10 installations only                    |
| Meter: Dummy No.2              | As required   |
| Metering-Unit No.3A            | As required (3 Maximum per position)  |
| Mounting D91098                | As required (1 Maximum per position)  |
| Mounting No.91477              | One per Metering-Unit No.3A   |
| Resistor, Coil No.9 240Ω       | 1 per Metering-Unit No.3A at B.E.C.B. No.10 installations only                    |
| Switch Rotary CD5022           | 1 per Metering-Unit No.3A   |
| Part 1/DBL/95                  | As required<br>See Note 7   |



**NOTES:—**

- 1 Section Switch B.E.C.B. Multiple No.9  
Section Switch B.E.C.B. No.10  
Section Switch P.B.X. SA7560  
Section Switch P.M.B.X.s 1A & 1B
- 2 See Dgm. N1014 for Mounting D91098 equipped for Scheme 'C'
- 3 Location of fuse-mountings will vary according to circumstances at individual installations  
Meters to be fused thus:— 0.5A per MTG. D91098 (ie. per 3 Meters No.21...)  
Metering units to be fused thus:— 1.0A per 10 M.U.s No.3A
- 4 Label No.359A engraved 1-10  
Label No.359B engraved 11-20  
Label No.359C engraved 21-30  
Label No.364A engraved 1-10  
Label No.364B engraved 11-20  
Label No.364C engraved 21-30
- 5 See Dgm. N1010
- 6 Where no apparatus rack is fitted the earth connexion should be made at the M.D.F. or switchboard earth busbar
- 7 The quantity of Parts 1/DBL/95 depends upon the mounting arrangements of the Metering Units No.3A. When mounted individually 2-Parts are required per M.U. When bolted together side by side 2-Parts are required only for the ends
- 8 Resistor Coil No.9 to be inserted in series with the battery supply to Metering-Unit No.3A at B.E.C.B. No.10 installations

|                         |       |  |             |
|-------------------------|-------|--|-------------|
| PO<br>TELECOMMS<br>HQRS | ISSUE |  |             |
| PAPER:— W               | A     | NEW FORMAT. M.U. No.3A WAS U.M. No.1A. NOTES 7&8 ADDED.<br>PART 1/DBL/95 AND INDUCTOR COIL No.172A ADDED | 7 - 5 - 73  |
| DISTN:<br>GENERAL       |       | R.J.B. E.C.C. STEVENS  | 15 - 2 - 60 |