

GENERAL

S.T.D. METERING AT P.M.B.X's
 CORD CCT. METERING AT B.E.C.B. No. 9 INSTALLATIONS

NIO31
 3 PANELS -1
 29-5-61
 CANCELLED
 D WILTSHIRE
 TD 2-4-1

APPARATUS SCHEDULE	
RATE BOOK TITLE	QUANTITIES
UNIT, METERING, No.1A	ONE PER CORD CCT. TO BE EQUIPPED
MOUNTING No.165/5A	AS REQUIRED TO SUIT INSTALLATION
PART 14 /SCO/6	ONE PER MOUNTING, No.165/5A
METER No 20A OR METER, No.21A	ONE PER CORD CCT. TO BE EQUIPPED
METER, DUMMY No. 2	AS REQUIRED
MOUNTING, D91429	AS REQUIRED
LABEL No.399A (NOTE 4)	ONE PER MOUNTING, D91429
FUSE No. 35/0-25	ONE PER MOUNTING, D91429
FUSE - MOUNTING	AS REQUIRED TO SUIT INSTALLATION
PART 1 /SCO/40 GREY	TWO PER CORD CCT. TO BE EQUIPPED

W

POST OFFICE ENGINEERING DEPT. EN-C'S OFFICE S Bch				DGM NIO31
CANCELLED Amendment				
Date				Date
Suffix				Drn. M.J.P.
Appd. in s3 Section				Ckd
29-5-61				Date
Supersede				

S.T.D. METERING AT P.M.B.X's

NIO31
 3 PANELS-3
 29-5-61
 CANCELLED
 D WILSHIRE
 TD 2-4-1

NOTES:-

1. SEE DIAGRAMS NIO94 AND LD42.
2. EARTH CONNEXION SHOULD BE MADE AT THE APPARATUS RACK BUSBAR OR, IF MORE CONVENIENT, AT M.D.F. OR SWITCHBOARD EARTH BUSBAR.
3. FUSING OF THE METERS SHOULD BE AS FOLLOWS :-
 1 FUSE, No. 35/0.25 PER MOUNTING, D91429 (i.e. PER 5 METERS).
4. LABEL, No. 399A ENGRAVED 1 3 5 7 9
 LABEL, No. 399 CAN BE ENGRAVED AS REQUIRED.

POST OFFICE ENGINEERING DEPT. E.N.C.'S OFFICE		S Bch		DGM: NIO31
CANCELLED		Amendment		Date
		Suffix		Drn. M 9.8
		Appd in 53 Section		CKd
		Ed Wilshire		Date 29-5-61
Supersede				

GEN

W

N1031

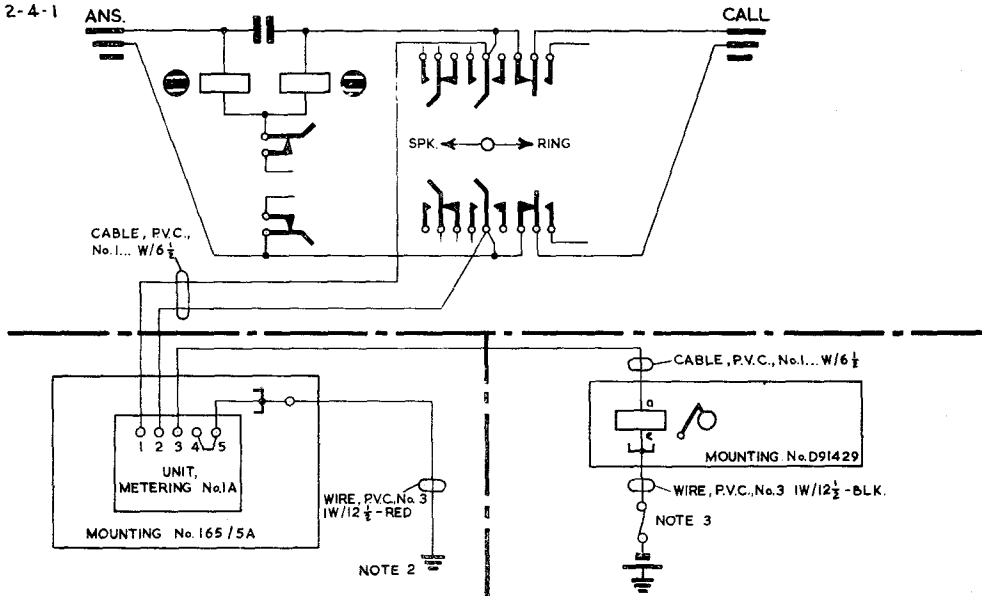
3 PANELS - 2

CANCELLED

D WILTSHIRE

TD 2-4-1

CORD CIRCUIT (NOTE 1)



GEN

W