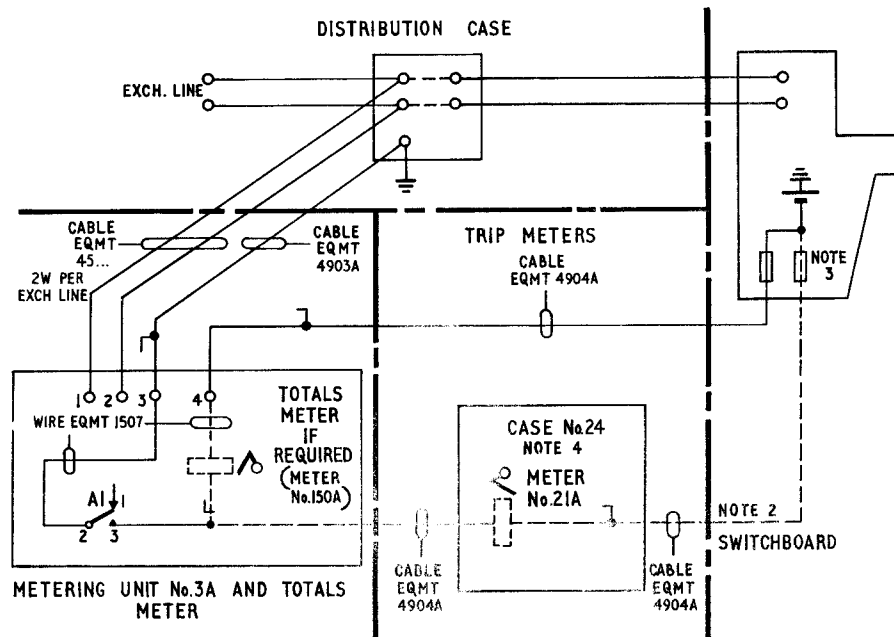


**S.T.D. METERING AT PMBX'S**  
**NON-MULTIPLE CORD TYPE SWITCHBOARDS (NOTE 5)**  
**SCHEMES A, B AND DI (NOTE 6)**

APPARATUS SCHEDULE			
DESCRIPTION	SCHEME		
	A	B	DI
Case No.24	nil	1 per 5 Meters No.21A	1 per 5 Meters No.21A
Fuse No.1/0.5 Fuse No.1/1.0 Fuse Mounting No.101A	} As required. See Note 3		
Label No.361 A,B,C or D	nil	As required for Mountings D91548	As required for Mountings D91548
Label No.362	As required for SWBDs CB873 $\left(\frac{5+20}{25}\right)$		
Label No.363A or B	As required for SWBDs AT3796 & N1070 $\left(\frac{10+30}{65}, \frac{10+50}{65}\right)$		
Label No.364A or B	As required for SWBDs AT3796 & N1070 $\left(\frac{10+60}{180}\right)$		
Meter No.21A	nil	1 per exchange line to be metered	1 per exchange line to be metered
Meter No.150A	1 per exchange line to be metered	nil	1 per exchange line to be metered
Meter, Dummy No.2	nil	as required	as required
Metering-Unit No.3A	1 per exchange line to be metered	1 per exchange line to be metered	1 per exchange line to be metered
Mounting No.D91477	One per Metering-Unit No.3A		
Part 1/DBL/95	As required. See Note 7		
Mounting No. D91548	nil	1 per Case No.24	1 per Case No.24



- NOTES:-
- 1 Schemes A and DI use Meters No.150A mounted in the Metering-Unit No.3A  
Scheme B use Meters No.21A in case No.24
  - 2 Additional connexions shown dotted provided for Scheme DI
  - 3 A Fuse-Mounting No.101A will be needed per Fuse No.1/...  
Fusing to be provided as follows:-  
1 Fuse No.1/1.0 per 10 Metering-Units No.3A  
1 Fuse No.1/0.5 per Case No.24
  - 4 See Diagram N1011 for Case No.24 fitted for Scheme B
  - 5 CB873  $\frac{3+10}{25}, \frac{5+20}{25}$   
N1070  $\frac{10+30}{65}, \frac{10+50}{65}, \frac{10+60}{180}$   
AT3796  $\frac{10+30}{65}, \frac{10+50}{65}, \frac{10+60}{65}$
  - 6 See Diagram N1010 for details of metering schemes
  - 7 The quantity of Parts 1/DBL/95 depends upon the mounting arrangements of the Metering Units No.3A. When mounted individually 2 Parts are required per M.U. When bolted together side by side 2 Parts are required only for the ends

PO TELECOMMS HQRS					
PAPER :- W DISTN: GENERAL	ISSUE	A	NEW FORMAT. MINOR AMENDMENTS.	<i>MJS</i>	TD2.4.1
			E.C.C. STEVENS.		7 · 5 · 73 30 · 12 · 59