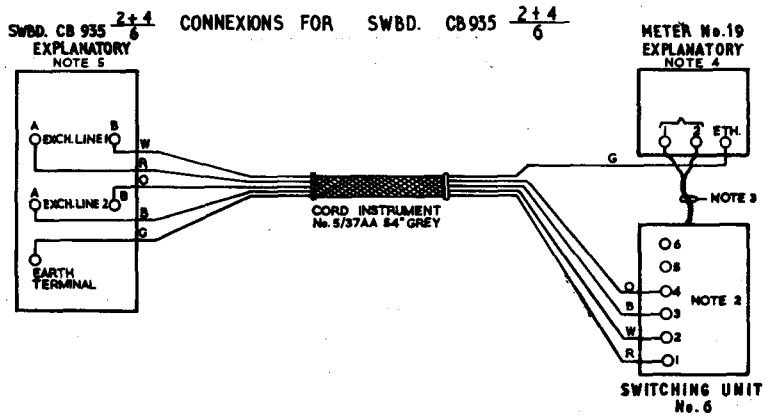
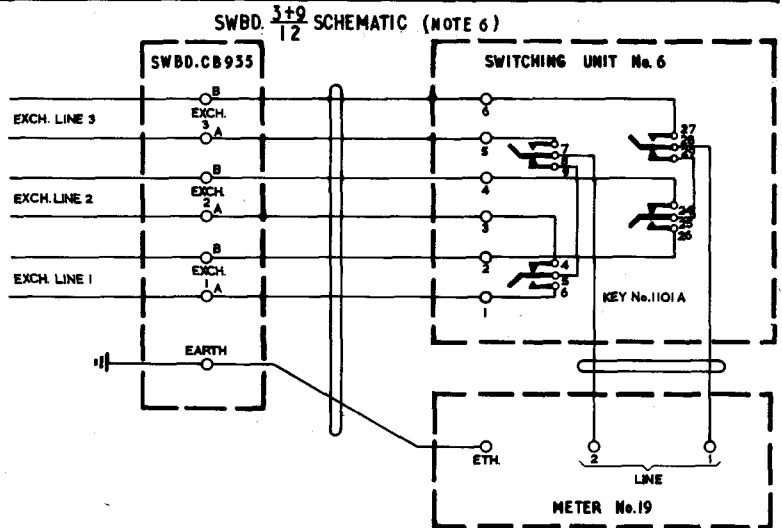


S.T.D. METERING AT P.M.B.X.'S
 SWITCHBOARD CB 935 SCHEME C1(b) (NOTE 1)
 SUPERSEDES FOR NEW WORK DGM. N1002

N1007
 PAGE 1-2
 ISSUE A



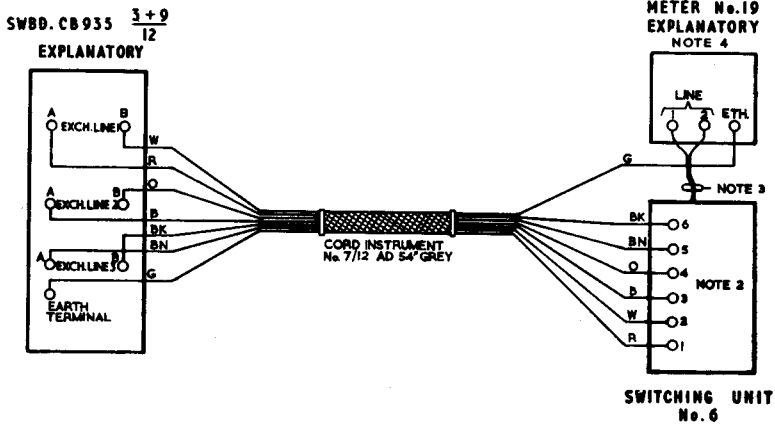
APPARATUS SCHEDULE		
ITEM	SWBD. CB.935 $\frac{2+4}{6}$	SWBD. CB.935 $\frac{3+9}{12}$
Switching Unit No. 6	1	1
Cord, Instrument 7/12 AD 54 in. Grey	-	1
Cord, Instrument 5/37 AA 54 in. Grey	1	-



Post Office
 Telecomms.
 Headquarters
 TD1.5.2
 Paper W
 Circulation
 GENERAL

ISSUES			
	A	New Format	8. 7. 68
	/	E.C.C. Stevens	20. 8. 62

CONNEXIONS FOR SWBD. CB935 $\frac{3+9}{12}$



1. For details of the various metering schemes see diagram N1010.
2. Terminals on Switching Unit No.6 number from left to right when viewing unit from the top. For diagram of Switching Unit No. 6 see N1015.
3. Cord Instrument $2/61E...6\frac{1}{2}''$ is provided with Switching Unit No.6.
4. To mount the Meter No.19 on the Switching Unit No.6 proceed as follows:-
 - (a) Remove the base from the Meter No.19 withdrawing the four fixing screws completely from the base. Wrap screws in tape and store in Switching Unit.
 - (b) Remove the Cord Instrument No. 3/108 AA BIK. 54" which is attached to the Meter.
 - (c) Fix the grommet attached to one end of the Cord Instrument No. 5/37AA 54" (or Cord Instrument 7/12 AD 54" for swbds. $\frac{3+9}{12}$) into the slot provided in the meter case.
 - (d) Terminate wires as shown in panels 1 or 2 as required.
 - (e) Hold the base plate of the Meter No.19 to the bottom of the Switching Unit No.6 and the Meter No.19 to the top of the unit.
 - (f) Screw the three items together using the two screws $4B.A. \times 1\frac{1}{4}''$ ch. hd. which are provided with the Switching Unit No.6.
5. For details of Swbds. CB 935 see diagram N935.
6. Schematic diagram for CB 935 $\frac{2+4}{6}$ is as for $\frac{3+9}{12}$ except that the connexions for the third exchange line are omitted.