

S.T.D. METERING AT P.M.B.X'S  
 SWITCHBOARD P.M.B.Xs Nos 2/2A AND 2/2B  $\frac{2+6}{8}$   
 SCHEME D1 (NOTE 1)

N1003  
 PAGE 1-2  
 ISSUE C

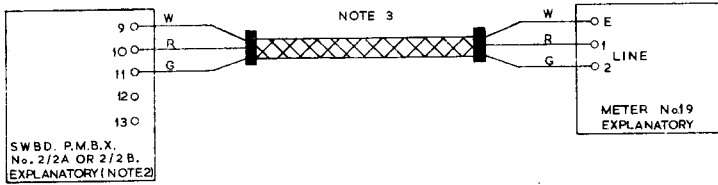


FIG.1 ONE METER CONNECTED TO FIRST EXCHANGE LINE

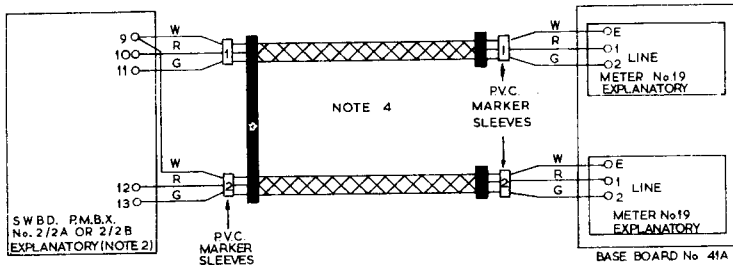


FIG.2 ONE METER CONNECTED TO EACH EXCHANGE LINE (NOTE 5)

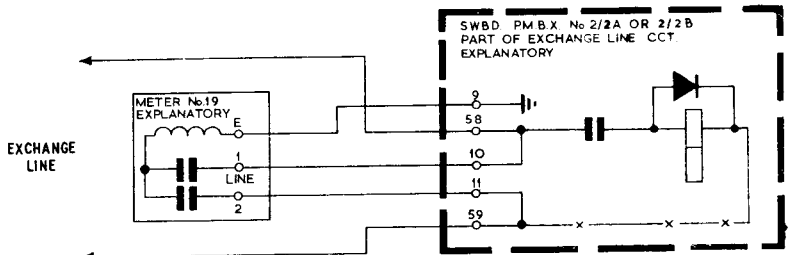


FIG.3 SCHEMATIC OF FIG.1 SHOWING METER CONNECTED IN PARALLEL WITH EXCHANGE LINE

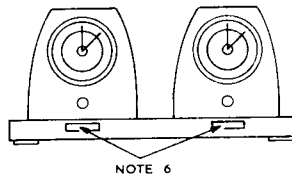


FIG.4 SKETCH SHOWING TWO METERS MOUNTED ON BASEBOARD.

Post Office Telecomms. Headquarters TD2-4-1			
Paper W	ISSUES	C	SWBD, P.M.B.X. No.2/2B added MWH 28-4-70.
Circulation		B	New Format 26-6-68
GENERAL		A	Panel 1, colours W and G reversed. 11.1.65
			E.C.C. Stevens 22.2.61

APPARATUS SCHEDULE		
If two meters required		
ITEM	No.	REMARKS
Baseboard No. 41 A	1	
Meter No. 19	2	
Cord, Instrument No. 6/47	1	
Black 18 in.		
Part No. 1/DBU/16	4	To be ordered from factories dept.
Screws for Wood, Steel, rd. hd, No. 2 x $\frac{3}{8}$ in.	8	4 screws and washers required for fitting parts No. 1/DBU/16 to Baseboard No. 41 A.
Washers, 6 B.A., large.	4	
Screws No. 4 B.A. x $\frac{5}{8}$ in. Brass. ch. hd.	4	Required for fitting Meters No. 19 to Baseboard No. 41 A.
Washers, 4 B.A., large.	12	
Labels No. 319 (Note 6)	2	To be fitted to the front of the Baseboard No. 41 A using 4 Screws for Wood, No. 2 x $\frac{3}{8}$ in.

NOTES

1. For details of the various metering schemes see Dgm. N 1010.
2. For details of switchboards P.B.M.Xs. Nos. 2/2A & 2/2B see Dgm. N1102.
3. Cord, Instrument No. 3/108AA Black, 54 in, is supplied with the Meter No. 19. Slack cord should be coiled and placed behind the switchboard.
4. Cord, Instrument No. 6/47, Black, 18 in, to be requisitioned as detailed in the apparatus schedule.
5. Baseboard No. 41 A to be requisitioned and drilled locally to take two Meters No. 19, rubber feet (part No. 1/DBU/16) and Labels No. 319.
6. Labels No. 319, suitably engraved should be fitted to the front of the Baseboard.