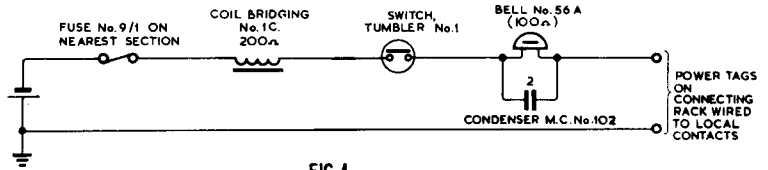


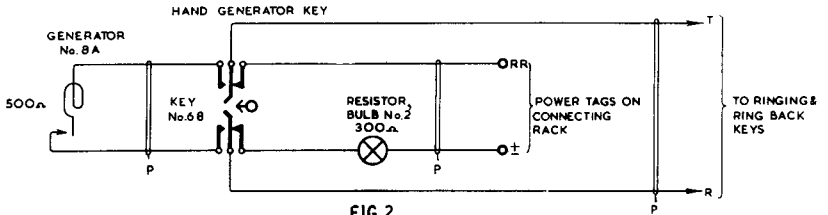
NIGHT ALARM CIRCUIT  
 (TO BE FITTED LOCALLY)



Note.

The above arrangement should also be used where interference is caused by the operation of the bell or buzzer on another swbd. served by the same power lead.

RINGING CIRCUIT



P. O. T. D. D. TD. 1. 5. 2	ISSUES			
		G	New format <i>FLR</i>	2-5-68
		F	Redrawn to current conventions & dual No C.B. 894 deleted	25-8-37
		E	Redrawn FIG. 3 deleted.	11-11-31
PAPER: W CIRCULATION GENERAL	ISSUES	A-D	See superseded tracing	
			V.D. S/Br.	24-9-14