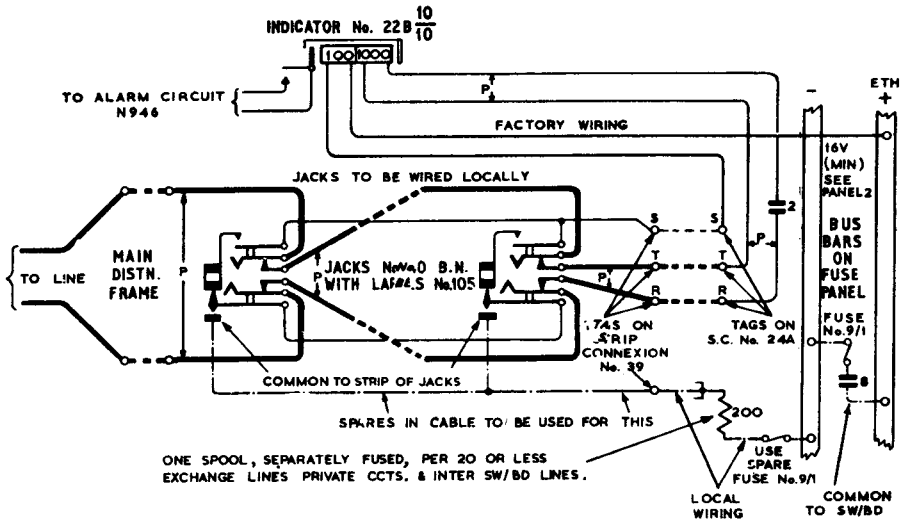


SECTIONS SWITCH B.E.C.B. MULTIPLE No.9  
 EXCHANGE LINE CIRCUIT  
 ( USING INDICATOR No. 22 B )

N942  
 PAGE 1-3  
 ISSUE E

SUPERSEDES N.T. 9448  
 SUPERSEDED BY N980  
 FOR INDICATORS No. 3100 A2.



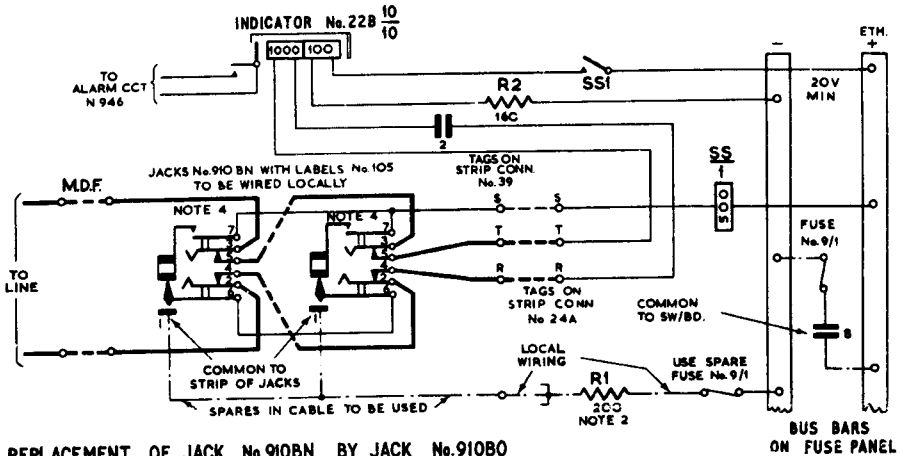
P.O.T.D.D. TD 1.5.2  PAPER: Y CIRCULATION GENERAL	ISSUES	E	New format <del>FR</del>	2-5-68	
		D	Panel 3 & note 4 added	9-12-65	
		C	Made 2 panels, supression note added	7-3-56	
		✓	Redrawn no amendment	28-7-38	
		B	Dual No. C.B. 919 deleted	12-5-38	
		A	Redrawn made Dual. Posn. Spool altered	22-3-23	
		✓	G. F. G. SBr.	1914	

**N942**  
**PAGE 2-3**  
**ISSUE E**

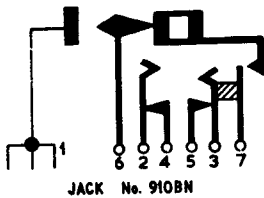
SECTIONS SWITCH B.E.C.B. MULTIPLE No.9  
 EXCHANGE LINE CIRCUIT (MODIFIED)  
 (USING INDICATOR No. 22B)

N942  
 PAGE 3-3  
 ISSUE E

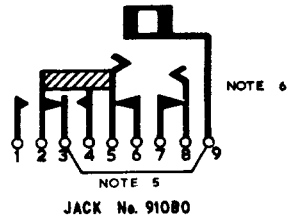
SUPERSEDED BY N980  
 FOR INDICATORS No.3100 A2



REPLACEMENT OF JACK No.910BN BY JACK No.910BO



JACK No. 910BN



JACK No. 910BO

To replace jack No.910BN by jack No.910BO shift:—

Wire from jack No.910BN	tag 6	to jack No.910BO	tag 2
" "	" 2	" "	" 5
" "	" 4	" "	" 6
" "	" 5	" "	" 7
" "	" 3	" "	" 8
" "	" 7	" "	" 4

NOTES

- For use where cord cct. sleeve relays (s) are relays No. 508.....and inter—P.B.X. extns. terminate on switchboard, see N751 panel 1.
- One resistor, separately fused, per 20 or less exchange lines, private ccts. and inter—P.B.X. lines.
- Items to be requisitioned separately  
 SS—relay No. 513A.  
 R2—resistor coil No. 9—160.
- When replacing jacks No.910BN by jack No.910BO see above.
- Tags 3 and 9 are strapped by manufacturer.
- Tag 1 commoned on strip by manufacturer.

O.T.D.D. D1.5.	ISSUES		
APER W	ISSUES	E New format <i>FLP</i>	2-5-68
		D Panel 3 & note 4 added	9-12-65
IRCULATION ENERAL	ISSUES	G.F.G. S.Br.	1914