

CIRCULATION

C.B. &amp; AUTO

SWITCHBOARD-C.B.935 (MKS.1-4)  $\frac{1+3}{4}$ ,  $\frac{2+4}{6}$ ,  $\frac{3+7}{12}$ ,  $\frac{3+9}{12}$ .

N 936

14-9-38  
3 PANELS - 1SUPERSEDED BY N935  
FOR NEW WORK

APPARATUS SCHEDULE					
ITEM	RATE BOOK DESCRIPTION	QUANTITY			
		$\frac{1+3}{4}$	$\frac{2+4}{6}$	$\frac{3+7}{12}$	$\frac{3+9}{12}$
B	BUZZER No. 18A	1	1	1	1
H	COIL BRIDGING No. 1H	1	2	3	3
I	COIL INDUCTION No. 1B	1	1	1	1
L	COIL RETARDATION No. 39A	2	3	5	5
QE	CONDENSER M.C. No. 101	1	2	3	3
QI	" " " 102	1	1	1	1
QL	" " " 103	2	2	2	2
P	FUSE No. 35/1	1	1	1	1
R	GENERATOR No. 4C.	1	1	1	1
X	INDICATOR No. 3700A	1	2	3	3
Y	" " 400 B OR 3100 A2	3	4	7	9
KC	KEY No. 236 GREY	3	4	14	18
KE	" " 212 "	2	5	11	11
KH	" " " "	-			
KI	" " 68 "	1	-	-	-
KJ	" " " "	-	1	1	1
KN	" " " RED	1	2	3	3
KR	" " 72 GREY	3	-	-	-
	" " 171 "	-	4	7	9
A	RELAY No. 500A	2	3	5	5

SUPERSESSION NOTE ADDED.

MKS. 1-4, ADDED TO TITLE

Revised with minor amendments

Circuit Title &amp; Part 1 amended. Dual No. CB 935 added. 3 &amp; 37. X

Amendment

Y

N 936

3 PANELS-2

EXPLANATORY CIRCUITS

FIG. 2. EXCHANGE THROUGH TO EXTENSION

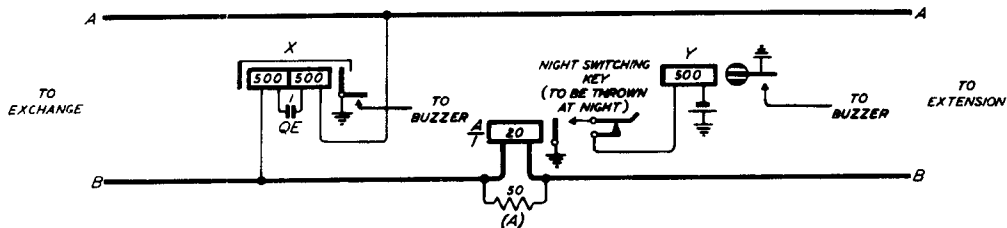
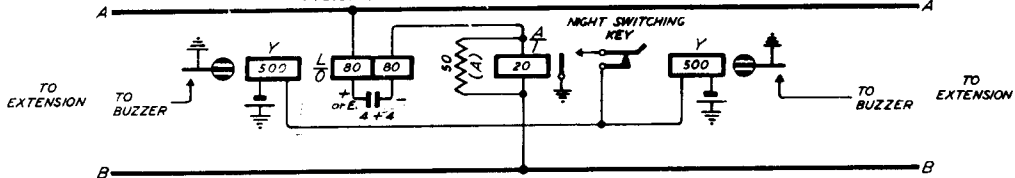


FIG. 3. EXTENSION THROUGH TO EXTENSION



NOTES TO FIG. 1.

1. ON  $\frac{3+7}{12}$  AND  $\frac{3+9}{12}$  BOARDS WHERE FIVE CONNECTING CIRCUITS ARE FITTED, AN INTERMEDIATE HORIZONTAL ROW OF KEYS IS FITTED AT \*. ON  $\frac{1+3}{4}$  BOARDS, THERE ARE ONLY TWO CONNECTING CCTS.
2. X = THROUGH OTHER EXCHANGE LINE KEYS.
3. WHERE A TELE. No. 162..., 1/162..., 232... OR 1/232... IS FITTED, CONNECT TR TO TERMINAL 1, R TO TERMINAL 2, AND T TO TERMINAL 3 OF TELEPHONE. IN ADDITION, IF TELE. No. 232... OR 1/232... IS USED, SHORT CIRCUIT TERMINALS 1-2 AND 3-4 OF INDUCTION COIL IN SWITCHBOARD.

