

SWITCHBOARD CB 935  $\frac{1+3}{4}$ ,  $\frac{2+4}{6}$  &  $\frac{3+9}{12}$ .

N 935

 7 PANELS - 1  
10-8-50

 SUPERSEDES  
N 936 FOR NEW  
WORK.

APPARATUS SCHEDULE				
ITEM	RATE BOOK DESCRIPTION	QUANTITY		
		$\frac{1+3}{4}$	$\frac{2+4}{6}$	$\frac{3+9}{12}$
B	BUZZER No. 18A.	1	1	1
HA, HB, HC.	COIL, BRIDGING No. 1W	1	2	3
IA TO IE.	COIL, RETARDATION No. 39A.	2	3	5
QC, QD, QE.	CONDENSER. M.C. No. 101.	1	2	3
QB.	" " No. 102.	1	1	1
QAA, QAB.	" " No. 103.	2	2	2
FS.	FUSE No. 35/1.	1	1	1
G	GENERATOR No. 26A OR No. 4C	1	1	1
EA, EB, EC.	INDICATOR No. 4000A.	1	2	3
XA TO XJ	" No. 400B.	3	4	9
KHA ( $\frac{1+3}{4}$ ) KOC ( $\frac{2+4}{6}$ , $\frac{3+9}{12}$ ).	KEY No. 68, GREY.	1	1	1
KNA, KNB, KNC.	" No. 68, RED.	1	2	3
KRA, KRB, KRC.	" No. 72, GREY.	3	-	-
KRA TO KRJ.	" No. 171, "	-	4	9
KEA TO KEF.	" No. 212, "	1	2	6
KHA TO KHC.	" No. 212, "	-	2	3
KOA, KOB.	" No. 212, "	1	1	2
KXA TO KXS	" No. 236, "	3	4	18
LA TO LE.	RELAY No. 500A OR No. 500H	2	3	5

## NOTES:-

1. FOR WIRING DIAGRAM OF SWITCHBOARD CB 935  $\frac{1+3}{4}$  OF MK. 5 OR LATER TYPE. SEE DIAGRAM LD 90.
- " " " " " CB 935  $\frac{2+4}{6}$  " " " " " " " " LD 91.
- " " " " " CB 935  $\frac{3+9}{12}$  " " " " " " " " LD 92.

GENERAL

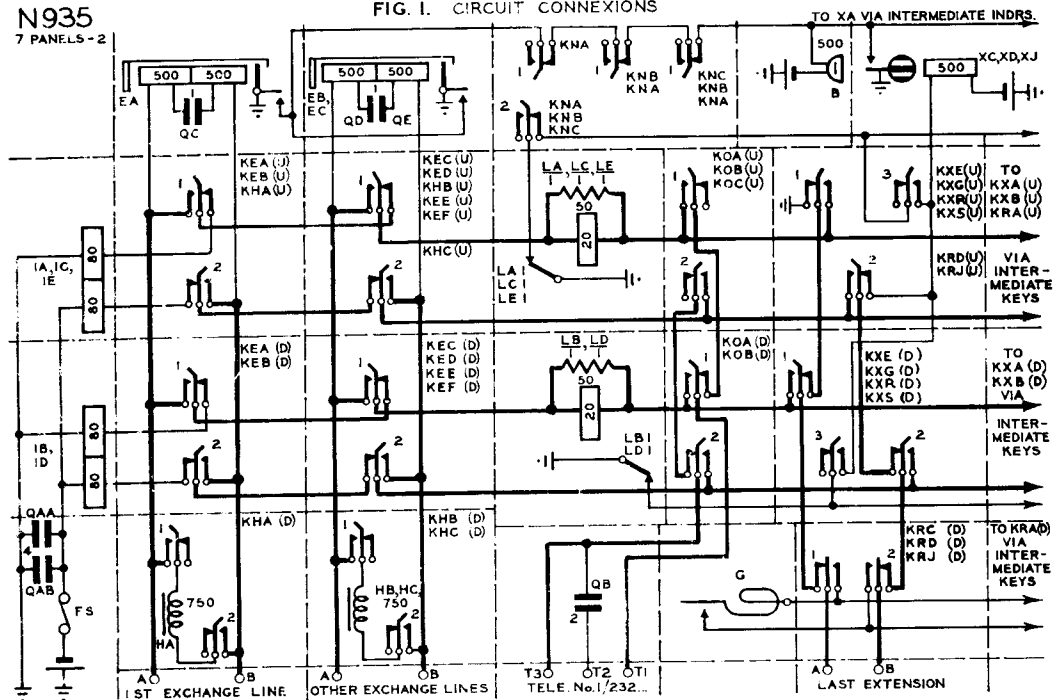
 WIRING CORRECTIONS ON EXTN. KEY PANEL 21-2-56 A  
2. MADE 7 PANELS.

W

N935

7 PANELS - 2

FIG. 1. CIRCUIT CONNEXIONS



# SWITCHBOARD CB 935 $\frac{1+3}{4}$ , $\frac{2+4}{6}$ & $\frac{3+9}{12}$

## LAYOUT OF KEYS

**N 935**  
7 PANELS-3  
10-8-50  
SUPERSEDES N 936 FOR  
NEW WORK.

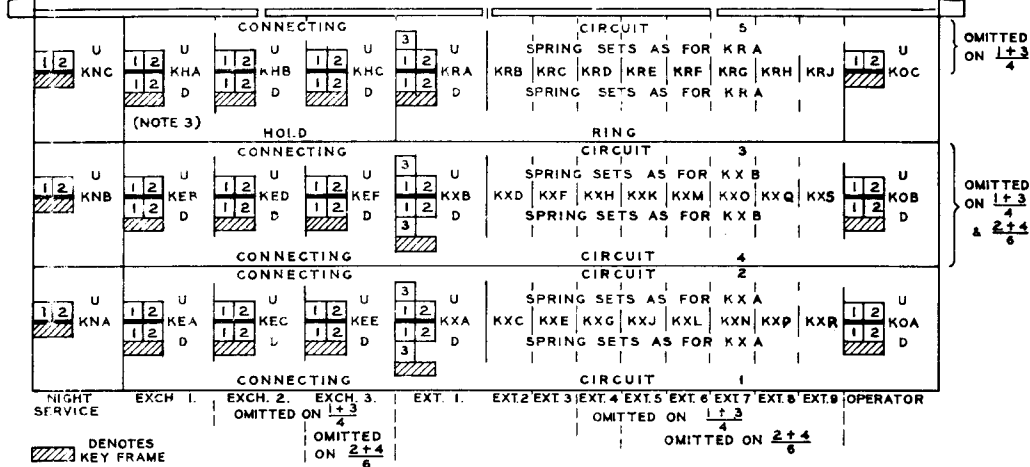
GENERAL

21-2-56 A



WIRING CORRECTIONS ON EXTN. KEY PANEL  
2. MADE 7 PANELS.

FIG. 2. BASE OF SWITCHBOARD



**NOTES .-**

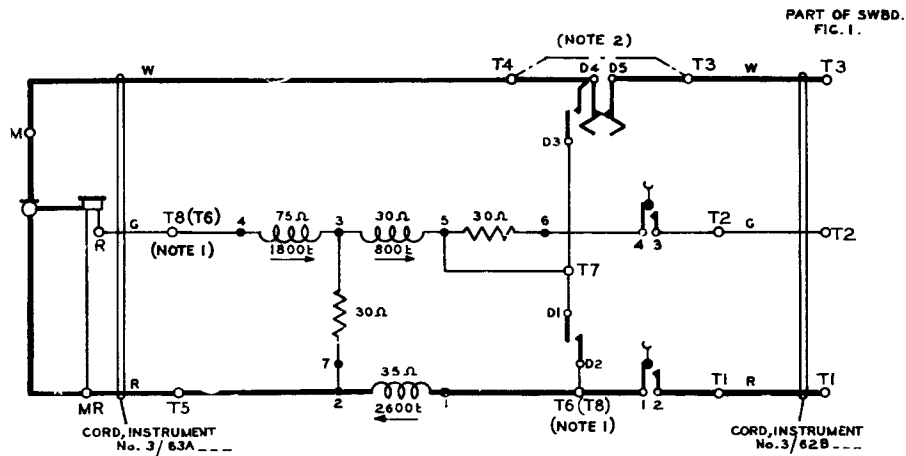
1. THE HALF OF THE KEY MARKED "U" CONTAINS THOSE SPRING-SETS WHICH ARE OPERATED WHEN THE LEVER OF THE KEY IS IN THE "UP" POSITION AND SIMILARLY THE HALF MARKED "D" IN THE DOWN POSITION.
2. THE SPRING-SETS ARE SHOWN IN THE POSITIONS WHICH THEY OCCUPY WHEN THE SWITCHBOARD IS OPEN, EACH SQUARE SHOWN THUS [3] INDICATES A COMPLETE CONTACT UNIT, i.e., CHANGE-OVER, MAKE ETC., THE NUMBER REFERRING TO KEY CONTACTS ON PANEL 2.
3. ON SWITCHBOARDS CB 935  $\frac{1+3}{4}$  KHA IS A KEY No. 68 AND IS MOUNTED WITH ITS FRAME REVERSE TO THAT SHOWN. THE CONTACT UNIT NUMBERS ARE THEREFORE ALSO REVERSED.

W

N 935

7 PANELS - 4

FIG.3. OPERATING TELEPHONE CIRCUIT USING TELEPHONE No.1/232...



NOTES:-

1. ON TELEPHONES No. 1/232... OF EARLIER PATTERN, THE CONNEXIONS TO TERMINALS T6 & T8 ARE REVERSED. THE EARLIER TERMINAL NUMBERING IS SHOWN IN BRACKETS e.g. T6 (T8).
2. TERMINALS T3 & T4 ARE STRAPPED FOR C.B. WORKING & THE DIAL OMITTED.

GENERAL

WIRING CORRECTIONS ON EXTN. KEY PANEL 2. 21-2-56 A  
MADE 7 PANELS

# SWITCHBOARD CB935 $\frac{1+3}{4}$ , $\frac{2+4}{6}$ & $\frac{3+9}{12}$

**N935**

7 PANELS-5  
IO-8-50  
SUPERSEDES N936  
FOR NEW WORK.

EXPLANATORY CIRCUITS.  
FIG. 4. EXCHANGE THROUGH TO EXTENSION.

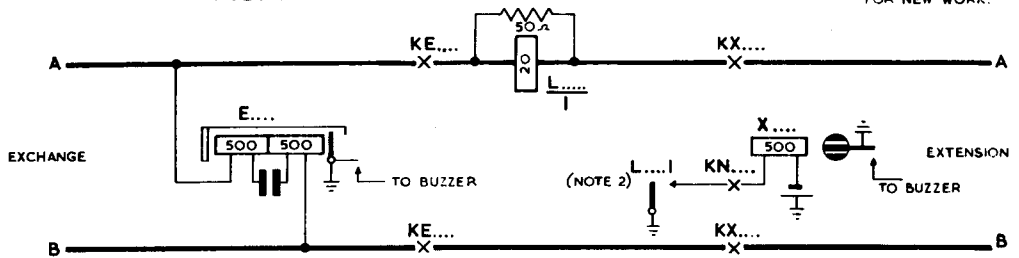
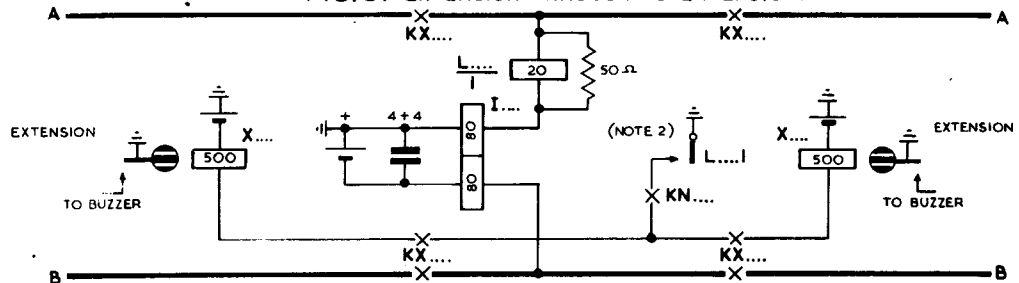


FIG. 5. EXTENSION THROUGH TO EXTENSION.



- NOTES:-
1. X DENOTES KEY CONTACTS.
  2. RELAY CONTACTS SHOWN OPERATED.

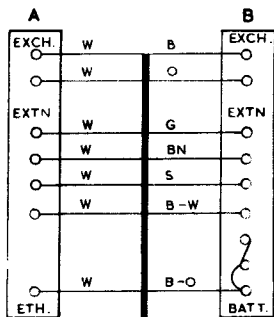
W

N935  
7 PANELS-6

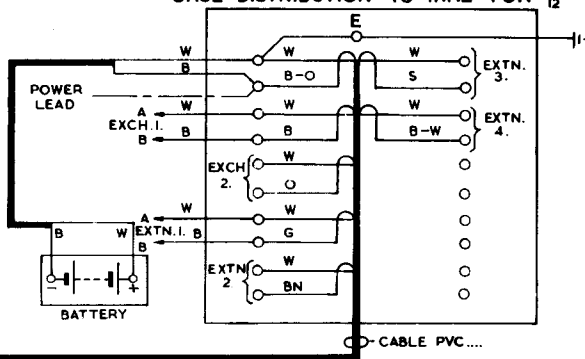
# SWITCHBOARD 935 $\frac{2+4}{6}$ & $\frac{3+9}{12}$ .

FIG. 6. CABLING DIAGRAM.

## SWITCHBOARD TERMINAL STRIP.



## BLOCK TERMINAL No.6. FOR $\frac{2+4}{6}$ CASE DISTRIBUTION 40 WIRE FOR $\frac{3+9}{12}$ .



### NOTES :-

1. THE CABLING ARRANGEMENTS SHOWN ARE SUITABLE FOR SWITCHBOARD CB935  $\frac{2+4}{6}$ .
2. FOR SWITCHBOARDS CB935  $\frac{3+9}{12}$  USE CABLE PVC.... & WIRE IN A SIMILAR MANNER.

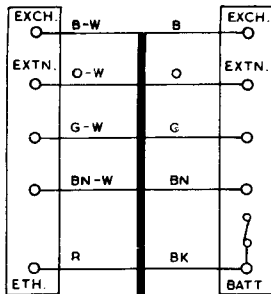
CIRCULATION	GENERAL
	Suffix
PAPER	W
	Amend.
WIRING CORRECTIONS ON EXTN. KEY PAPERS	
2. MADE 7 PANELS.	
21-2-56 A	

# SWITCHBOARD CB935 $\frac{1+3}{4}$

FIG. 7. CABLING DIAGRAM USING CORD INST. 12/07G BRN 60"

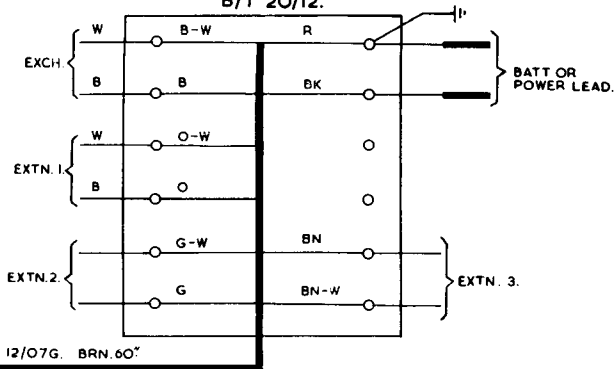
**N935**  
7 PANELS - 7  
10-B-50  
SUPERSEDES N936  
FOR NEW WORK.

## SWITCHBOARD TERMINAL STRIP.



CORD INST. 12/07G. BRN. 60"

## B/T 20/12.



### NOTES :-

1. SLATE & SLATE WHITE CONDUCTORS TO BE INSULATED IN SWITCHBOARD & B/T 20/12.
2. WHEN ADDITIONAL CONDUCTORS ARE REQUIRED ON PROVISION OF AN INTERSWITCHBOARD EXTN. OR PRIVATE CIRCUIT USE SUITABLE CORD OR CORDAGE INST. ... & ADDITIONAL B.T. 20/... AS REQUIRED.