

PART	A	W	REDRAWN RELAYS WERE NO 173A COILS REWARD WERE 13C MINOR WIRING CHANGES. PANELS 7 & 8 ADDED.	10-2-33	A	SUB	CIRCULATION C.B.S. 1, 2 & 3 AND MAGNETO

SWITCHBOARD CBS N 934 $\frac{1+3}{4}$, $\frac{2+4}{6}$, $\frac{3+9}{12}$

FOR USE ON C.B.S. NOS. 1, 2 & 3 SYSTEMS

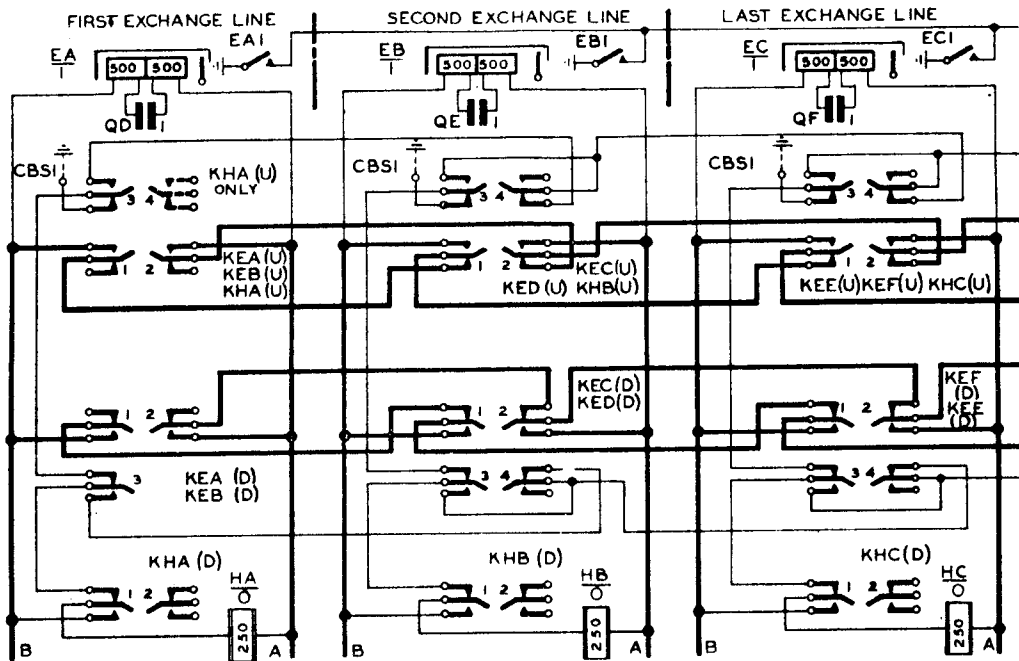
N 934
B-PANELS 1
12 B 42

APPARATUS SCHEDULE				
ITEMS	RATE BOOK DESCRIPTION	QUANTITY		
		$\frac{1+3}{4}$	$\frac{2+4}{6}$	$\frac{3+9}{12}$
BZ	BUZZER, No. 8A	1	1	1
IC	COIL, INDUCTION, No. 21A	1	1	1
HA, HB, HC	" RETARDATION No. 3499	1	2	3
QA1-5, QB1-5, QC	" CAPACITOR M.C. No. 102	5	7	11
QD, QE, QF	" " No. 101	1	2	3
HG	GENERATOR, No. 26A	1	1	1
EA EB EC	INDICATOR 2200A	1	2	3
XA TO XJ	" 3100A2	3	4	9
KXA TO KXS	} KEY No. 236	4	5	20
KEA KEB				
KEC TO KEF	" .. 198	-	1	4
KOA KOB	" .. 212	1	1	2
KOC	" .. 68	-	1	1
KHA TO KHC	{ " .. 68 ($\frac{1+3}{4}$ ONLY)	1	-	-
	" .. 208	-	2	3
KNA TO KNC	" .. 307	1	2	3
KRA TO KRJ	{ " .. 72 ($\frac{1+3}{4}$ ONLY)	3	-	-
	" .. 171	-	4	9
LA TO LE	RELAY No. 8249	2	3	5

WIRING DIAGRAMS $\frac{1+3}{4}$ LD84, $\frac{2+4}{6}$ LD85, $\frac{3+9}{12}$ LD86

N 934
8 PANELS-2

FOR KEY CODES SEE PANEL 5

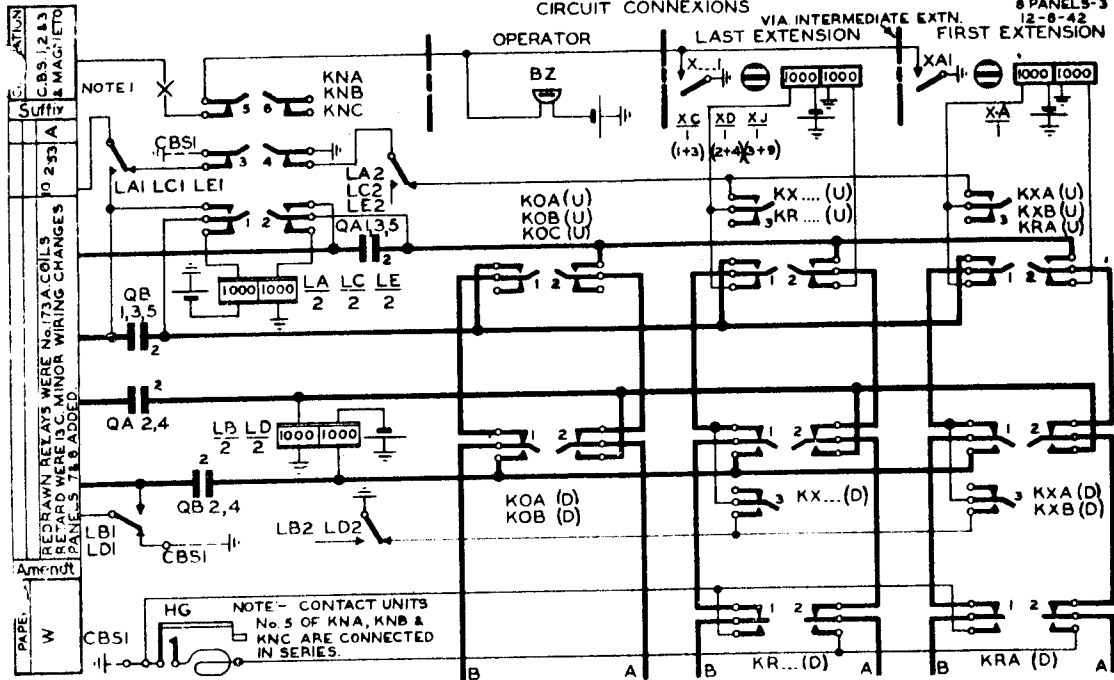


SWITCHBOARD C.B.S. N934

CIRCUIT CONNEXIONS

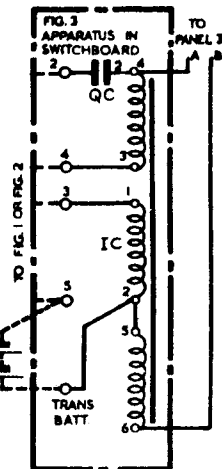
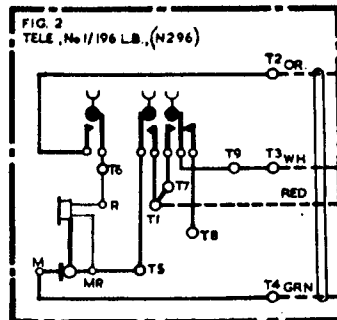
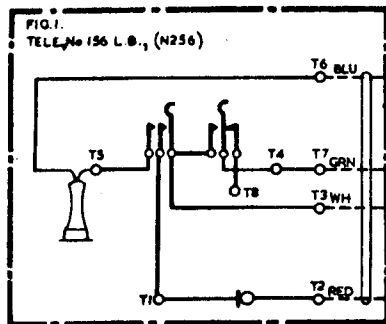
N934

8 PANELS-3
12-8-42



N934
8-PANELS-4

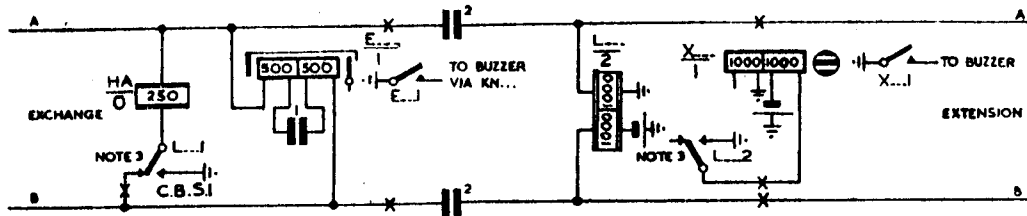
OPERATOR'S TELEPHONE CIRCUITS



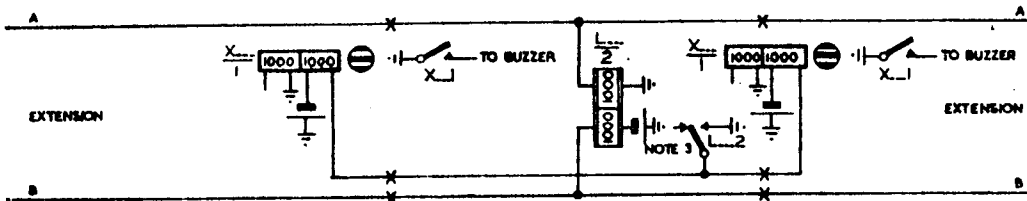
N934
8 PANELS-6

EXPLANATORY CIRCUITS

EXCHANGE THROUGH TO EXTENSION C.B.S. Nos. 1, 2 & 3 WORKING



EXTENSION TO EXTENSION



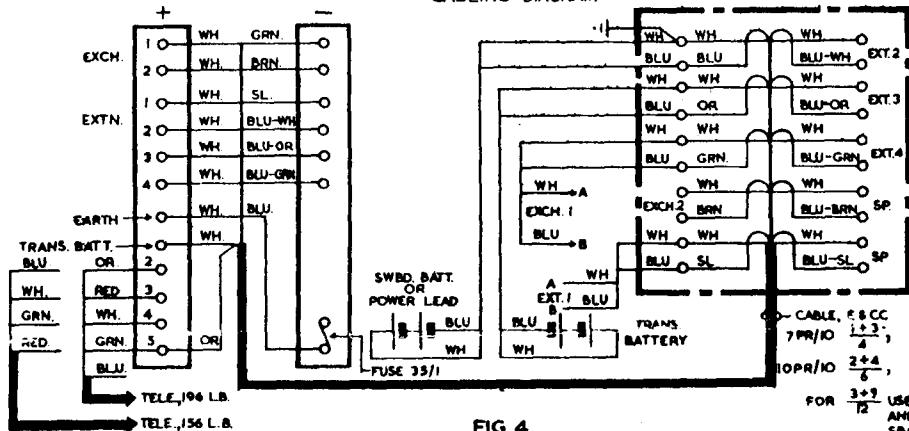
NOTES:-

1. --- DENOTES CONNEXIONS FOR C.B.S.1 WORKING.
2. X " " KEY CONTACTS.
3. RELAY CONTACTS SHOWN OPERATED.

CIRCULATION	C.B.S. 12 & 3 AND MAGNETO
Suffix	A
	10-2-82
RE-DRAWN RELAYS WERE NOT IN A COILS IN BOARD WERE 13C MINOR WIRING CHANGES PANELS 7 & 8 ADDED	
PAPER	W

SWITCHBOARD C.B.S. N934 $\frac{1+3}{4}$ $\frac{2+4}{6}$ $\frac{8+9}{12}$
CABLING DIAGRAM

N934
8 PANELS-7
12-8-42

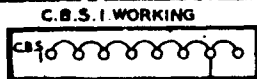


BLOCK, TERMINAL No. 8 FOR $\frac{1+3}{4}$ & $\frac{2+4}{6}$

CASE, DISTRIBUTION, 40 WIRE, FOR $\frac{3+9}{12}$

FIG 4

FIG. 5



NOTES:-

- 1 WHEN WORKING TO C.B.S.1 EXCHANGE INSERT STRAPS ON STRIP CONNEXION MARKED C.B.S.1 TO COMPLETE EARTH CONNEXIONS MARKED C.B.S.1 ON PANELS 2 & 3.
- 2 ONLY THOSE EXTENSION INSTRUMENTS REQUIRED FOR NIGHT SERVICE NEED BE WIRED FOR EARTH CLEARING OTHER EXTENSIONS MAY BE WIRED AS FOR C.B.S. 2 & 3.

FOR $\frac{3+9}{12}$ USE TWO 7PR CABLES AND WIRE IN A SIMILAR MANNER

N934

B-PANELS-8

WIRING DIAGRAM USING CORD INSTRUMENT 12/076

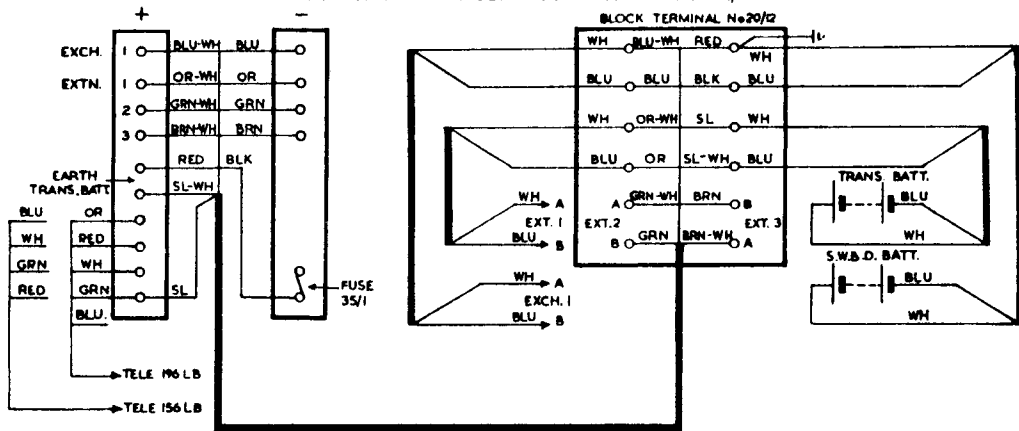


FIG.6

NOTES. —

1. WHEN ADDITIONAL CONDUCTORS ARE REQUIRED, ON PROVISION OF AN INTERSWITCHBOARD EXTENSION OR PRIVATE CIRCUIT USE CORD INSTRUMENT 2/94B BROWN 72" & TERMINATE ON BLOCK TERMINAL 20/2 THE TWO CORDS SHALL THEN BE LACED TOGETHER.