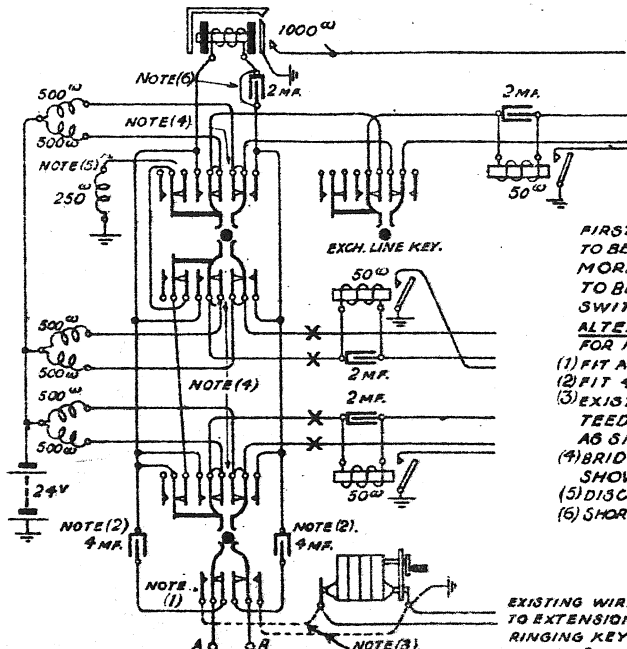


**D.L. C.D.S. CORDLESS SWITCHBOARD. (POSITIVE CLEARING). IV. 307.24.9.21.**  
**TERMINATION OF A P.W. OR TIE LINE ON EXCHANGE EQUIPMENT.**  
**FOR TERMINATION OF P.W. OR TIE LINE ON EXTENSION EQUIPMENT SEE C.B.S.362. C.B.S.363.**  
**FOR NORMAL CIRCUIT OF CORDLESS SWITCHBOARD SEE C.B.S.364.(N908). (N906)**

C.B.S. LTD. P.O. 272.5000.1251.



**NOTES.**

FIRST EXCHANGE LINE EQUIPMENT TO BE USED IN ALL CASES AND NOT MORE THAN ONE SUCH CIRCUIT TO BE TERMINATED ON A SWITCHBOARD OF THIS TYPE.

ALTERATIONS:-(SEE DIAG. C.B.S.364.N908, FOR NORMAL CIRCUIT CONNECTIONS)

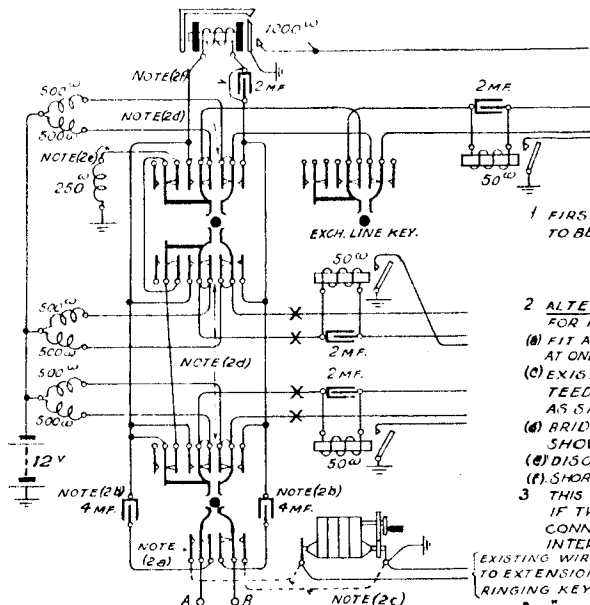
- (1) FIT ADDITIONAL RINGING KEY.
- (2) FIT 4 MF. CONDENSERS.
- (3) EXISTING HAND GENERATOR TO BE TIED TO ADDITIONAL RINGING KEY AS SHOWN BY DOTTED WIRING.
- (4) BRIDGE INNER SPRINGS OF KEYS AS SHOWN.
- (5) DISCONNECT 250Ω BRIDGING COIL.
- (6) SHORT CIRCUIT 2 MF. CONDENSER.

EXISTING WIRING TO EXTENSION CCT. RINGING KEYS.

"X" INDICATES KEYS ON OTHER EXCHANGE LINES.

TO TIE LINE OR A P.W. TERMINATED ON AN ORDINARY MAGNETO TELE. WITH GENERATOR.

**SWITCHBOARD B.E.C.B.S. CORDLESS No. 1. (POSITIVE CLEARING). N.907. 24·9·21.**  
 TERMINATION OF A P.W. OR TIE LINE ON EXCHANGE EQUIPMENT.  
 FOR TERMINATION OF P.W. OR TIE LINE ON EXTENSION EQUIPMENT SEE C.B.S.362.<sup>A</sup> C.B.S.363.<sup>C</sup>  
 FOR NORMAL CIRCUIT OF CORDLESS SWITCHBOARD SEE C.B.S.364. (N908). (N906)



**NOTES.**

- 1 FIRST EXCHANGE LINE EQUIPMENT TO BE USED IN ALL CASES.
- 2 ALTERATIONS:-(SEE DIAG. C.B.S.364.N908, FOR NORMAL CIRCUIT CONNECTIONS)
  - (a) FIT ADDITIONAL RINGING KEY. (b) FIT 4 MF COND. AT ONE END ONLY OF TIE LINE, OMIT FROM P.W.
  - (c) EXISTING HAND GENERATOR TO BE TIED TO ADDITIONAL RINGING KEY AS SHOWN BY DOTTED WIRING.
  - (d) BRIDGE INNER SPRINGS OF KEYS AS SHOWN.
  - (e) DISCONNECT 250Ω BRIDGING COIL.
  - (f) SHORT CIRCUIT 2 MF. CONDENSER.
- 3 THIS CIRCUIT ARRANGEMENT WILL NOT BE USED IF TWO OR MORE SUCH LINES ARE TO BE CONNECTED TO A CORDLESS SWITCHBOARD AND INTERCOMMUNICATION BETWEEN THEM IS REQD.

{ EXISTING WIRING TO EXTENSION CCT. RINGING KEYS.

"X" INDICATES KEYS ON OTHER EXCHANGE LINES.

A O B  
 TO TIE LINE OR A P.W. TERMINATED ON AN ORDINARY MAGNETO TELE. WITH GENERATOR.

C. Notes amended 1/11/26