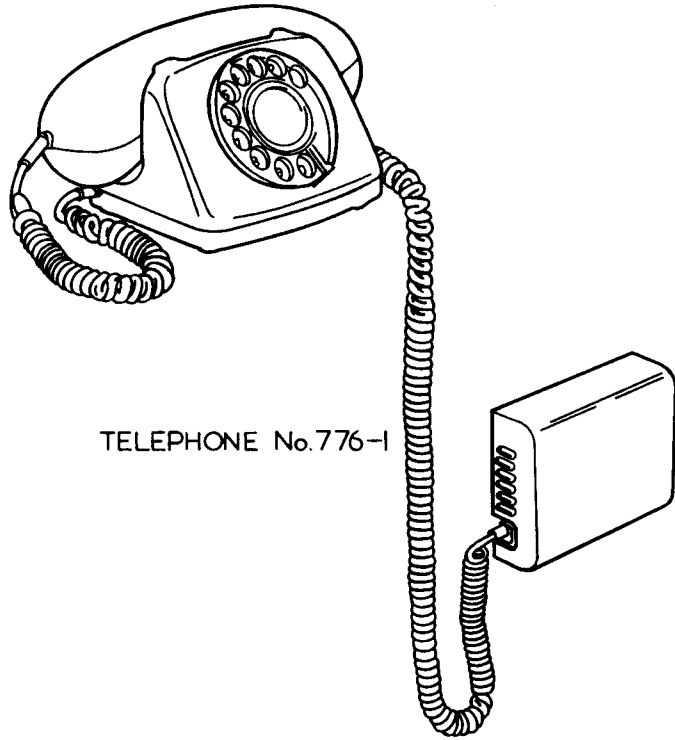
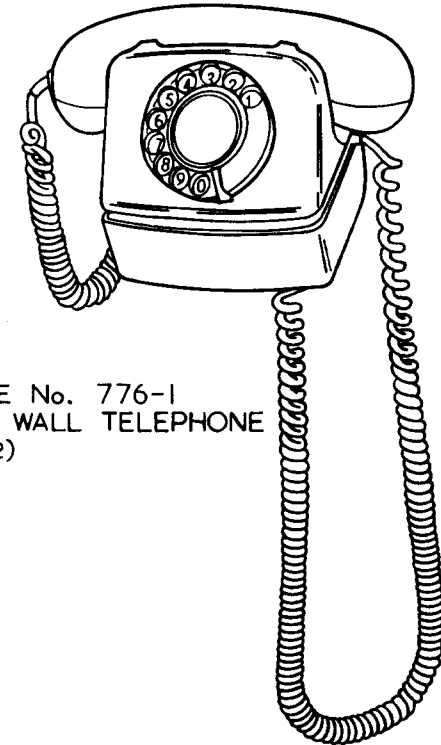


TELEPHONE No.776-1
(COMPACT TELEPHONE)



TELEPHONE No.776-1



TELEPHONE No. 776-1
FITTED AS WALL TELEPHONE
(SEE NOTE 2)

CONTENTS

- CIRCUIT DIAGRAM SHOWING CONNEXIONS AS ISSUED
- AUTOMATIC SYSTEM SHARED SERVICE LINES
- C-WIRE PBX EXTENSIONS WITH RECALL
- MBX WITH ADDITIONAL SIGNALLING C-WIRE
- DD ON UNITS

- FIG. 1
- FIG. 2
- FIG. 3
- FIG. 4
- FIG. 5

REFERENCE

ELECTROCOMMUNICATIONS INSTRUCTION INSTALLATION C3 81051

PO TELECOMMS HQRS PAPER: W DISTN: GENERAL	ISSUE		
		do P. Ireland	TD 7.1.1 7.3.78

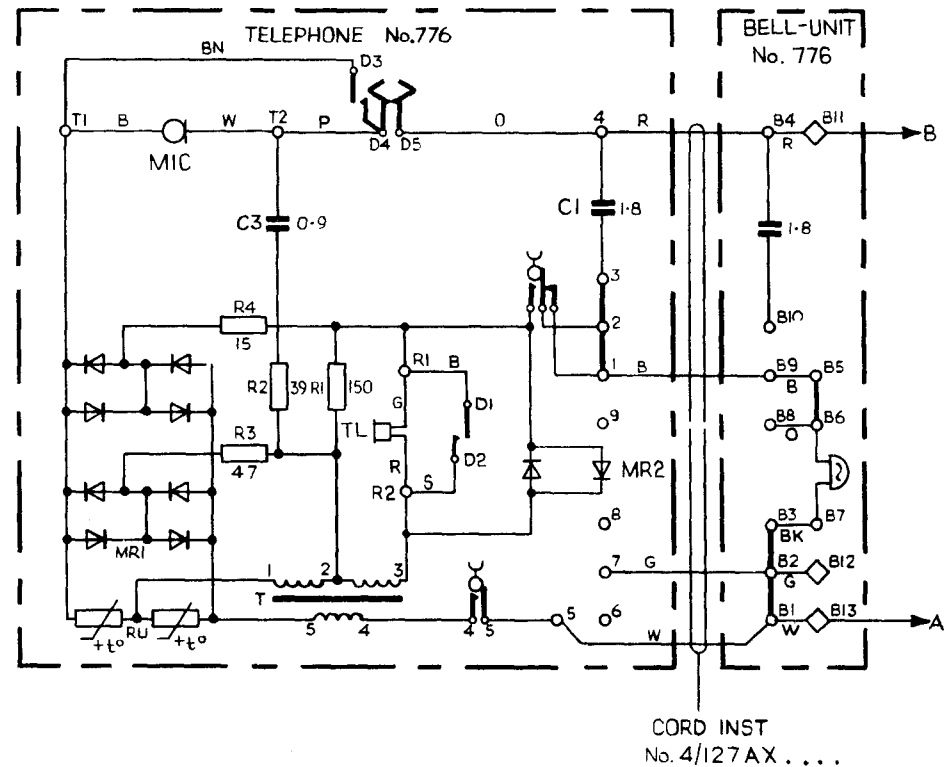
NOTES :-

1. TELEPHONE No. 776 -1 IS A TABLE TELEPHONE COMPRISING A TELEPHONE No. 776 AND A BELL-UNIT No. 776 CONNECTED TOGETHER WITH A CORD INST No. 4/127 AX GREY. THE MARKETING TITLE FOR THIS INSTRUMENT IS THE COMPACT TELEPHONE.
2. THE TELEPHONE No. 776 -1 MAY BE INSTALLED AS A WALL TELEPHONE BY UTILISING A BRACKET TELEPHONE No. 18A. THIS BRACKET HOUSES THE BELL-UNIT MINUS COVER AND PROVIDES A SHELF ON WHICH THE TELEPHONE STANDS.
3. TELEPHONE No. 776 -1 MAY BE USED IN PLACE OF TELEPHONE No. 746 IN CERTAIN AUTO EXTENSION PLAN ARRANGEMENTS. SEE ALPHABETICAL INDEX DGM N001.
4. WHEN AN EXTENSION BELL IS REQUIRED, REMOVE STRAP B5-B6 IN BELL-UNIT No. 776 AND CONNECT BELL.
5. WHEN THE TELEPHONE IS TO BE FITTED IN A POSITION REMOTE FROM BELL - UNIT, TERMINATE THE TELEPHONE CORD ON A BLOCK TERMINAL AND RUN CABLE BETWEEN THE BLOCK TERMINAL AND THE BELL-UNIT No. 776
CONNECT THE CABLE CONDUCTORS TO THE CORD CONDUCTORS IN ACCORDANCE WITH THE FOLLOWING TABLE.

4 WAY CORD	}	RED - BLUE	4 WIRE CABLE
		WHITE - ORANGE	
		GREEN - GREEN	
		BLUE - BROWN	

6 WAY CORD (PMBX WITH ADDITIONAL SIGNALLING C WIRE)	}	RED - BLUE	8 WIRE CABLE
		WHITE - ORANGE	
		GREEN - GREEN	
		BLUE - BROWN	
		ORANGE - W/BUE	
		BLACK - W/ORANGE	

FIG. 1 CIRCUIT DIAGRAM SHOWING CONNEXIONS AS ISSUED



AUTOMATIC SYSTEM SHARED SERVICE

FIG 2

USING :-

TELEPHONE No.776-1

SWITCH No.30A-2

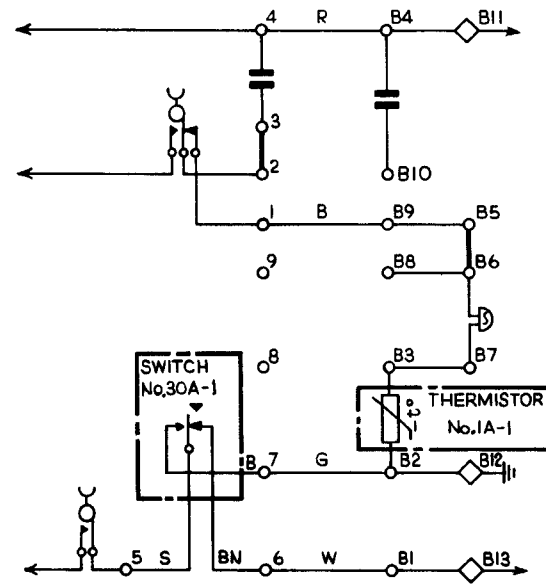
THERMISTOR No.1A-1

NOTES:-

A. REMOVE STRAPS B1-B2-B3 IN BELL-UNIT AND 1-2 IN TELEPHONE

B. EXCHANGE LINE CONNEXIONS

'A' WIRE TO B13	} CUSTOMER
'B' WIRE TO B11	
'A' WIRE TO B11	} CUSTOMER
'B' WIRE TO B13	



2-WIRE PBX EXTENSION WITH RECALL

FIG 3

USING:-

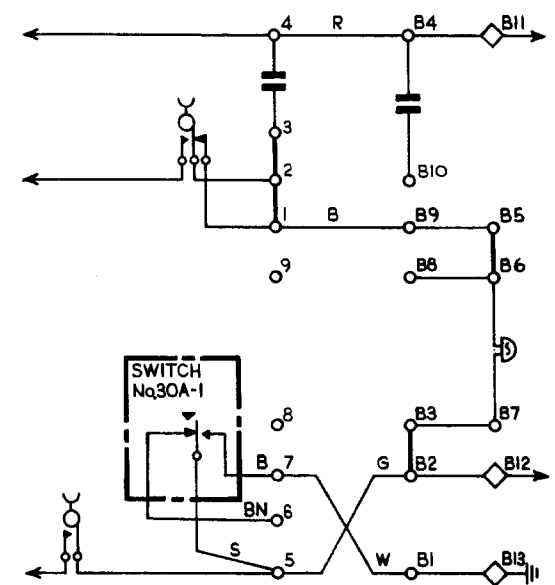
TELEPHONE No.776-1

SWITCH No.30A-2

NOTES:-

A. REMOVE STRAP B1-B2 IN BELL-UNIT No.776.

B. REVERSE GREEN AND WHITE CORD CONDUCTORS IN TELEPHONE No.776.



PMBX WITH ADDITIONAL SIGNALLING C WIRE

FIG 4

USING:-

TELEPHONE No.776-1

SWITCH No.30A-2

SWITCH No.19A-1

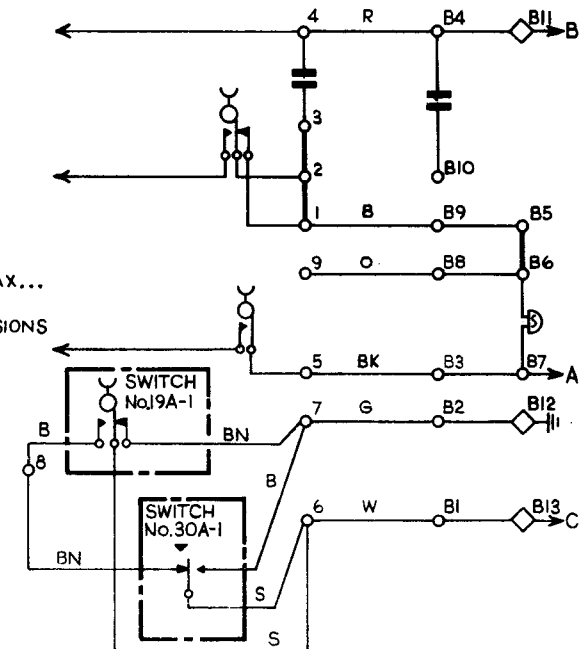
CORD INST No.6/61AT... GREY

NOTES:-

A. REMOVE STRAPS B1- B2- B3 IN BELL-UNIT No.776

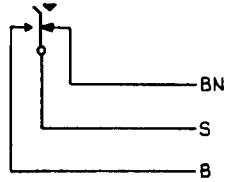
B. RECOVER CORD INST No.4/127AX... FIT CORD INST No.6/61AT...

C. FOR 2-WIRE EXTERNAL EXTENSIONS USING UAA No.96 OR 96A, WIRE THE TELEPHONE TO FIG3.



ADD-ON UNITS
FIG 5

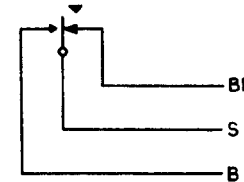
SWITCH No. 35A-2
BELL CUT - OFF SWITCH



SWITCH FITS TO AND IS OPERATED BY BELL
VOLUME CONTROL

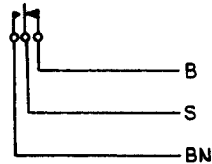
SWITCH No. 30A-2
CONSISTS OF ONE SWITCH No. 30A-1 AND ONE
DUMMY SWITCH PART 1/DLE/85 (NOT AVAILABLE SEPARATELY)

SWITCH No. 30A-1
NON-LOCKING
SWITCH



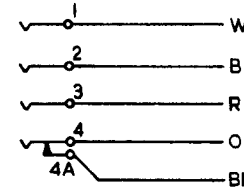
SWITCH FITS TO RIGHT SIDE OF TELEPHONE. DUMMY SWITCH FITS
TO LEFT SIDE OF TELEPHONE

SWITCH No. 19A-1
ADDITIONAL GRAVITY SWITCH (TRIMPHONE ITEM)



CONTACTS SHOWN IN THE CONDITION THEY
ASSUME AS A DETACHED COMPONENT

JACK No. 139 A
REPLACES CORD ANCHOR IN BELL-UNIT No. 776 FOR
PLAN 4 ARRANGEMENTS



BRACKET, TELEPHONE No. 18A
BRACKET USED TO CONVERT TELEPHONE TO WALL TYPE
(SEE NOTE 2)