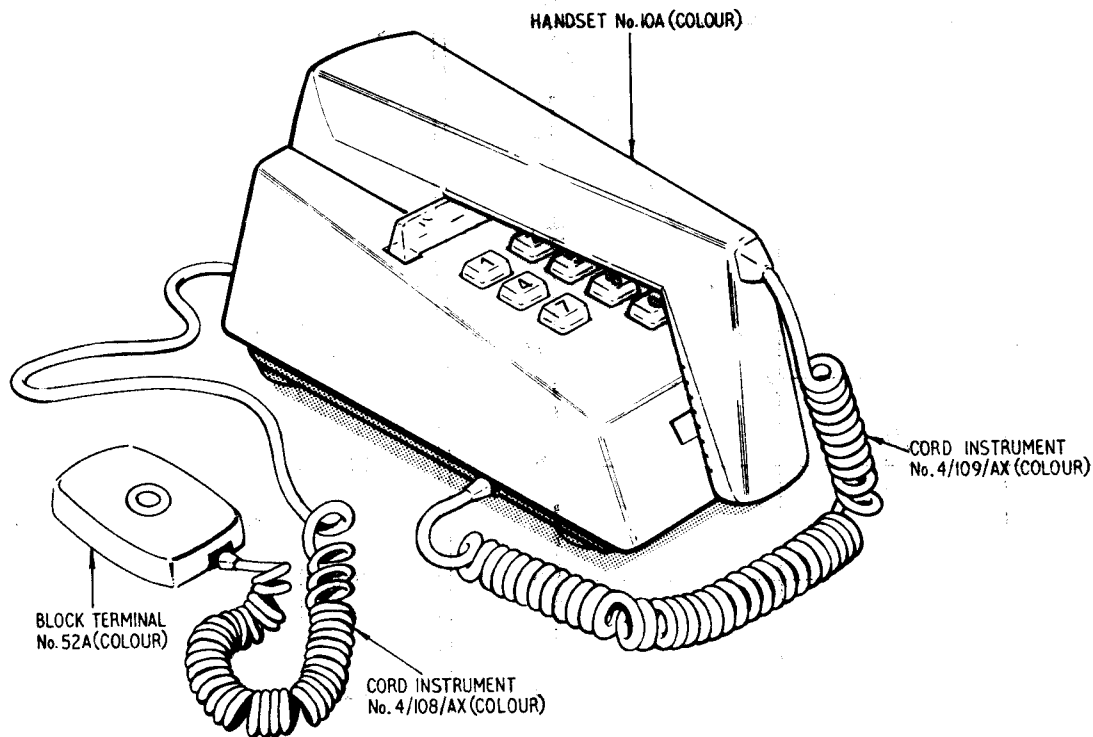


**TELEPHONE No.766**  
**PUSH-BUTTON TRIMPHONE WITH 10 PPS SIGNALLING**  
**AND PROVISION FOR ONE PRESS-BUTTON**



**NOTES:—**

- 1 Telephone No.766 is a 10 Button 10 PPS signalling Push-Button Trimphone intended for use in place of dial Telephone No.722 etc. It does not require a battery or external power-unit.
- 2 The Telephone No.766 is similar to the Trimphone (Telephone No.2/722) and may be fitted in accordance with diagram N822 and 700-type telephone plan diagrams.
- 3 The telephone will accommodate the range of additional parts for the Trimphone,—see Diagrams N820 and N4700.
- 4 A lightning protector, SGI, is connected between Terminals T8—T19. This component must not be removed. In some versions this component may be mounted on the Push-Button Unit Assembly and connected to T19 by a green wire or mounted directly in the Telephone Unit.
- 5 The Tone-Ringer No.8A fitted to this telephone includes a suppression circuit. A thermistor is not required for exclusive service connexions.
- 6 When connected as a PMBX No.4 extension, fit a Resistor Coil No.35A 3.9kΩ in place of Strap T4—T5. This resistor should also be fitted where unsatisfactory operation of the tone-ringer is experienced when operated from vibrator or transistor ringer sources. On extension plan arrangements, only one resistor should be fitted in series with the bells, normally in the main instrument.
- 7 The Telephone No.766 cannot be used for the control of subscribers group transfer, except for TXE2 and TXK3 exchanges where no transfer equipment is required at the customers premises.
- 8 In some versions REG (Regulator No.7A) may be attached to the Push-Button Unit Assembly.
- 9 The Telephone No.766 cannot be used as the carrier subscriber on the WB900 '1+1' Subscribers Carrier System.
- 10 When replacing the cover special care is needed to ensure the wires to the Push-Button Unit do not foul the gravity switch mechanism.
- 11 On Mark 3 only, the stop screw of the tone ringer cut-off facility should be parked in the keypad circuit board when not in use. A hole in the board is provided for this purpose and marked.
- 12 Marks 1-5 of this telephone were originally coded 1/... Mk1, 1/... Mk2, 2/... 3/... & 4/... respectively. A few instruments thus marked may still be in service.

**REFERENCES:—**

Facilities .....	T1 B4 B0152
Installation .....	T1 C3 B3025
Maintenance .....	T1 E5 B2832
Trimphone .....	Dgm N822
Auxiliary units .....	{ Dgm N820
	{ Dgm N4700

PO TELECOMMS HQRS  PAPER:— W  DISTN:—GENERAL	ISSUE	D	NOTE 1 REWRITTEN. NOTES 10, 11 AND 12 ADDED. MINOR AMENDMENTS. ME/PD 1-1-1	
		C	TELEPHONE No. 4/766 AND NOTE 9 ADDED. PUSH BUTTON UNITS, ILLUSTRATION AND NOTES 1, 4 AND 8 AMENDED. MINOR AMENDMENTS.	14 11 79
		B	2 AND 3/766 ADDED. FIG 2 ADDED. NOTE 1 CHANGED. NOTES 7 AND 9 ADDED. E.M.S.	13 10 78
		A	MADE WHITE.	TD 7-1-1 1 6 78 TD 7-1-2 19 10 75

FIG.1. CONNEXIONS AS ISSUED (TELEPHONE 1/766 ONLY—SEE NOTE 12)

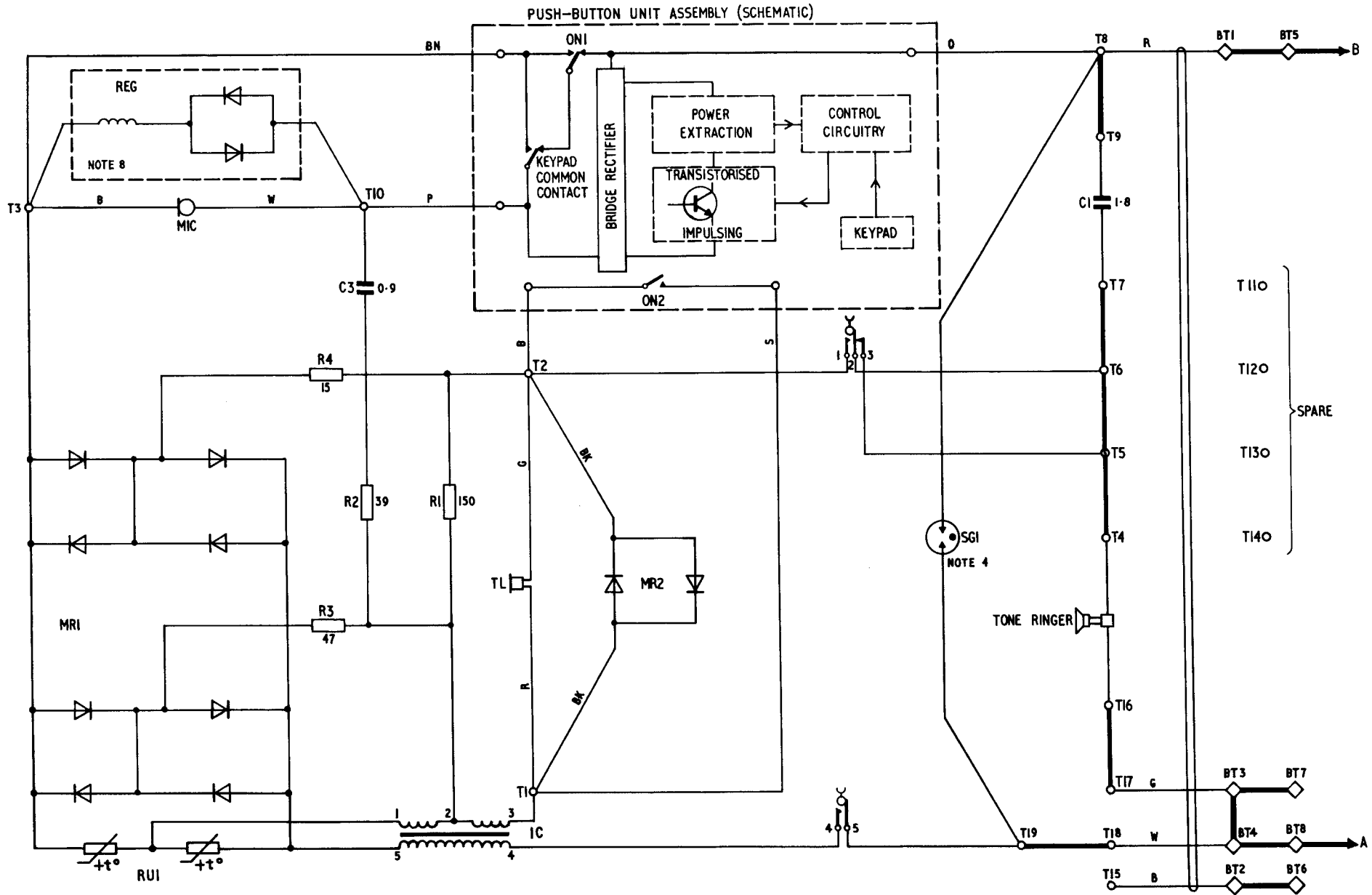


FIG.2 CONNEXIONS AS ISSUED

