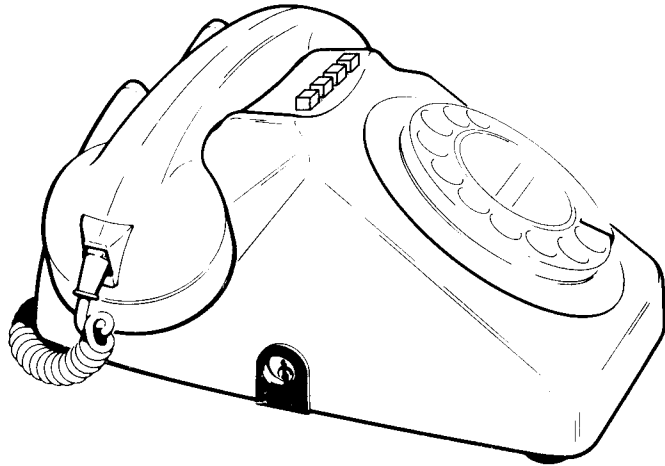
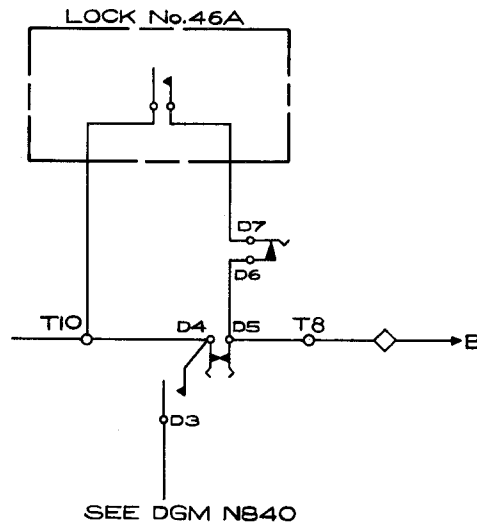


RESTRICTED DIALLING (SUBSCRIBER CONTROLLED)
USING A KIT No.311A AND DIAL AUTO No.28FA
CLEAR WITH A TELEPHONE No. 740



- 1 THIS ARRANGEMENT ENABLES THE SUBSCRIBER TO PREVENT THE DIALLING OF ALL DIGITS EXCEPT '9'.
- 2 APPARATUS REQUIRED :-
 1 KIT No.311A COMPRISING OF :-
 LOCK No.46A AND GROMMET
 TELEPHONE COVER No. 7/DCO/723
 2 KEYS
 1 DIAL AUTOMATIC No.28FA CLEAR
- 3 INSTALLATION
 RECOVER THE EXISTING TELEPHONE COVER.REMOVE THE LABEL No.479A, PARTS 1-4/DBU/375 (BUTTONS, DUMMY), PART No.1/DSC/515 (SCREW), PART No.1/DSP/1579 (SPRING) AND PART No.1/DBU/292 (BUSH) FROM THE EXISTING COVER AND FIT ONTO THE COVER 7/DCO/723. FIT THE LOCK No.46A TO THE LEFT HAND SIDE OF TELEPHONE GANTRY (VIEWED FROM THE FRONT) AND THEN FIT THE COVER GROMMET OVER THE LOCK BARREL. REPLACE THE EXISTING DIAL WITH A DIAL AUTO No.28FA CLEAR. CONNECT THE DIAL AND LOCK No.46A AS SHOWN. RECOVER THE STRAP FROM DI-D3 IF FITTED.
- 4 THE SERIAL NUMBER WHICH IS STAMPED ON THE LOCK No.46A AND THE KEYS SHOULD BE RECORDED ON THE INSTALLATION FAULT CARD.
- 5 CHECK THAT WITH THE LOCK OPERATED AND THE KEY REMOVED ONLY THE DIGIT '9' CAN BE DIALLED.



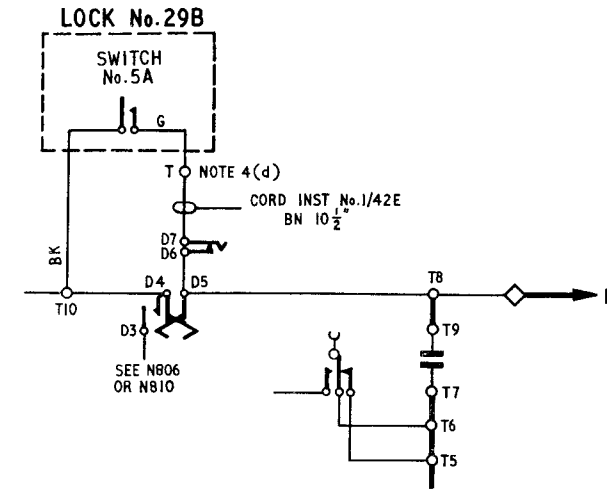
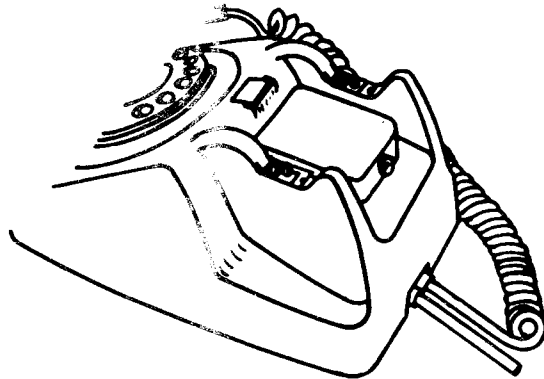
PO TELECOMMS HQRS			
PAPER:-W	ISSUE	D NOTE 3 AMENDED.MINOR AMENDMENTS. <i>68.9.80 BSA</i>	26.6.80
DISTN:- GENERAL		C MADE 3 PAGES.PAGE 3 MADE YELLOW. <i>W.H. 1/1/80</i>	1-2-78
		B NEW FORMAT. MINOR AMENDMENTS. J.D.B.	20.6.77
		A NEW FORMAT. NOTES AMENDED. E.M.S. F.A.H TD 7.1.1	15.2.68
		J.H.COMBRIDGE	20.8.64

SPARE

RESTRICTED DIALLING. (SUBSCRIBER CONTROLLED)

USING LOCK No.29B AND DIAL AUTO No.28 FA

CLEAR WITH TELEPHONES Nos.706...OR 710...



NOTES:—

- 1 This arrangement enables the subscriber to prevent the dialling of all digits except '9'.
- 2 Apparatus Required:—
 - 1 Lock No.29B
 - 1 Dial Automatic No.28 FA Clear
 - 1 Cord Instrument No.1/42E Brown 10 1/2"
- 3 The Lock No.29B can only be fitted to Telephones No.706...or 710... which are not equipped with a carrying handle (Part 1/DHA/23). Where necessary the carrying handle may be replaced by two escutcheon plates (Parts 1/DPL/746 and 2/DPL/746, 2 Parts 1/DBU/282).
- 4 Installation:—
 - (a) Remove the telephone case. Apply the template (supplied with the Lock No.29B), with the chamfered edge underneath, to the flat surface of the case between the handset supports. Push the template well forward.
 - (b) Drill three holes in the telephone case using a 3/16" or No.13 twist drill. Drill at low speed with light pressure supporting the surface which is being drilled on a wooden block.

- (c) Cut off the RED wire close to the Switch No.5A and pass the two remaining flexible leads of the Lock No.29B through the middle drilled hole in the case. Secure the Lock No.29B by means of the two 4BA screws and washers.
- (d) Replace existing dial with a Dial Auto No.28 FA Clear. Connect the dial and Lock No.29B as shown using a spare terminal for the connexion from D7. Recover Strap DI-D3 (if fitted).
- 5 The serial number which is stamped on the Lock No.29B and the Key, Lock No.29, should be recorded on the installation fault card.
- 6 Check that with the barrel of the lock pressed-in only the digit '9' can be dialled.

PO TELECOMMS HQRS				
COLOUR:—Y	ISSUE	C	MADE YELLOW. <i>ME/PA 1.1.3</i>	1.2.78
DISTN:—		B	NEW FORMAT. MINOR AMENDMENTS. <i>EPB.</i>	20.6.77
GENERAL		A	NEW FORMAT. NOTES AMENDED. E.M.S. F.A.H.	TD 7.1.1 15.2.68
			J.H. COMBRIDGE.	TD 1.4 20.8.64