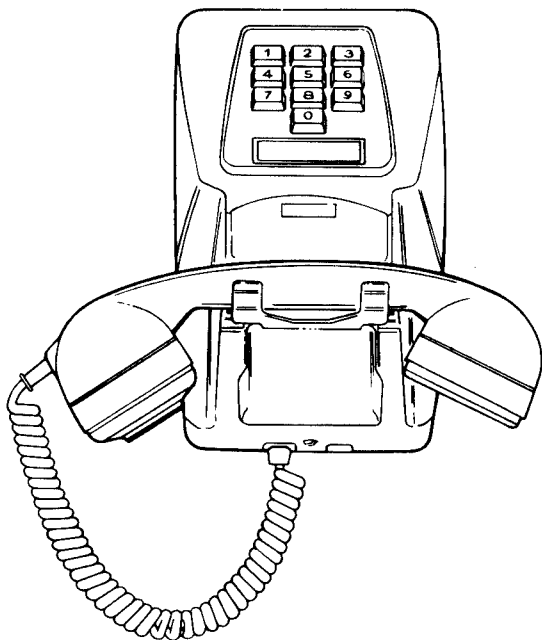


TELEPHONE No.755
WALL MOUNTED PUSH-BUTTON TELEPHONE WITH 10 PPS
SIGNALLING AND PROVISION FOR 1-2 PRESS-BUTTONS



NOTES :-

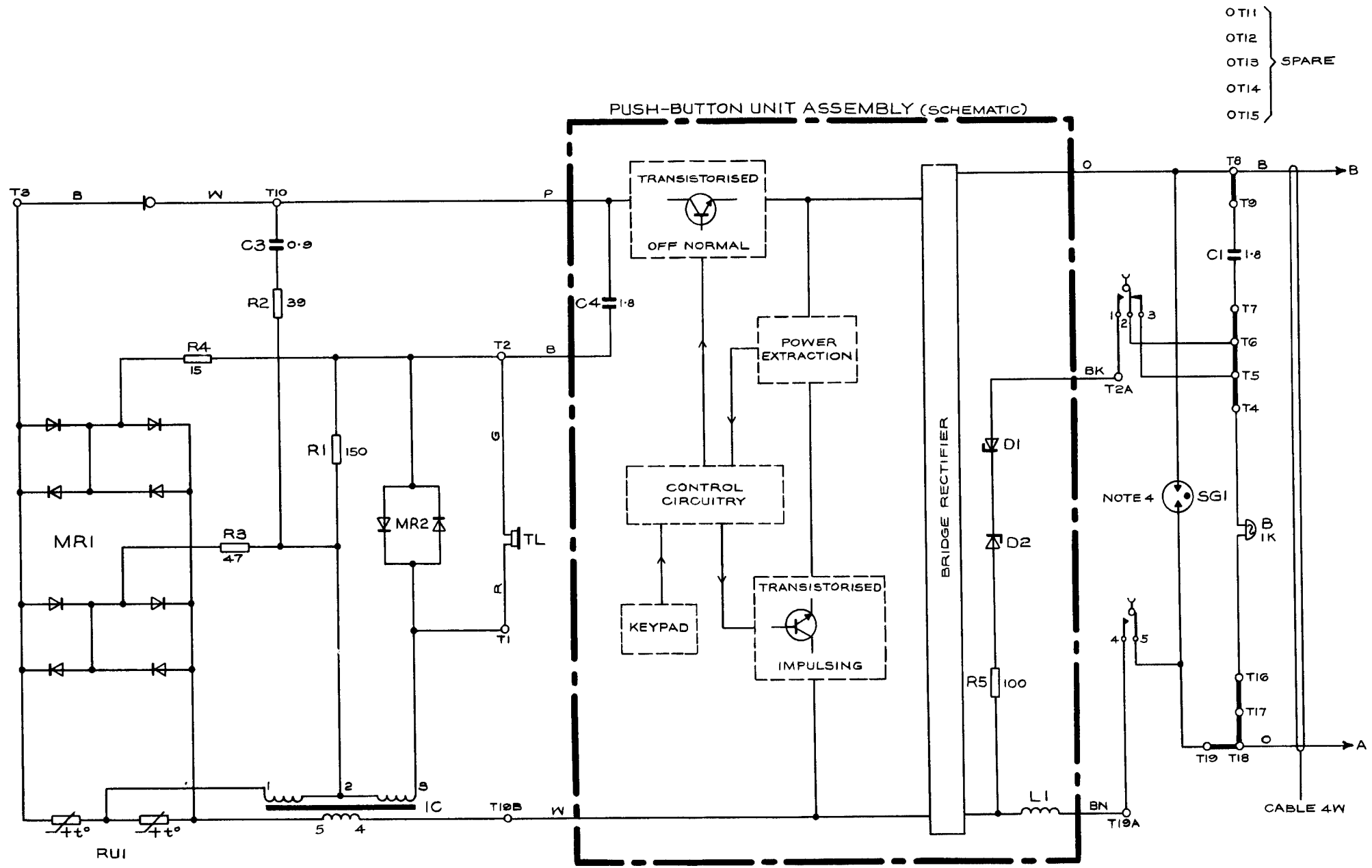
- 1 TELEPHONE No.755 IS A 10 BUTTON 10 PPS WALL MOUNTED PUSH-BUTTON TELEPHONE INTENDED FOR USE IN PLACE OF DIAL TELEPHONE No.741 ETC. IT DOES NOT REQUIRE A BATTERY OR EXTERNAL POWER-UNIT.
- 2 TELEPHONE No.755 IS SIMILAR TO TELEPHONE No.746 AND MAY BE FITTED IN ACCORDANCE WITH DIAGRAM No.846 AND 700-TYPE TELEPHONE PLAN DIAGRAMS.
- 3 TELEPHONE No.755 WILL ACCOMMODATE THE RANGE OF ADDITIONAL PARTS FOR TELEPHONE No.746 - SEE DIAGRAMS N848 AND N4700.
- 4 A LIGHTNING PROTECTOR, SGI, IS CONNECTED BETWEEN TERMINALS T8-T19. THIS COMPONENT MUST NOT BE REMOVED. THIS COMPONENT IS MOUNTED DIRECTLY ON THE TELEPHONE-UNIT BOARD.
- 5 TELEPHONE No.755 CANNOT BE USED FOR THE CONTROL OF SUBSCRIBERS GROUP TRANSFER, EXCEPT FOR TXE2 AND TXK3 EXCHANGES WHERE NO TRANSFER EQUIPMENT IS REQUIRED AT THE CUSTOMERS PREMISES.
- 6 TELEPHONE No.755 CANNOT BE USED AS THE CARRIER SUBSCRIBER ON THE WB900 '1+1' SUBSCRIBERS CARRIER SYSTEM.
- 7 WHERE AN EXTENSION BELL IS REQUIRED REMOVE THE STRAP T17-T18 AND CONNECT BELL TO T17-T18.

REFERENCES :-

FACILITIES.T1 B4 B0147
MAINTENANCET1 E5 B2829
INSTALLATION.T1 C3 B3031
TELEPHONE No.746DGM.N846
AUXILIARY UNITS.	{ DGM.N848
	{ DGM.N4700

PO TELECOMMS HQRS				
PAPER:- W	ISSUE			
DISTRIBUTION:- GENERAL			ME/PDI-1-1	9.7.80

FIG.2 CONNEXIONS AS ISSUED



- OT11
- OT12
- OT13 } SPARE
- OT14
- OT15