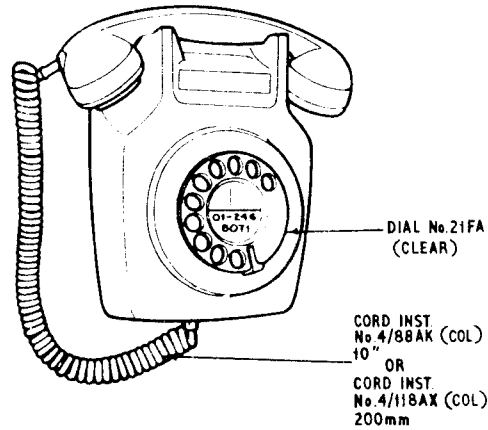


TELEPHONE No.741 (MARK 1 & 2)
WALL TELEPHONE WITH PROVISION FOR 1 TO 4 PRESS-BUTTONS FOR USE ON AUTO SYSTEMS



CONTENTS

Circuit diagram showing connexions as issued. Fig 1
Automatic systems shared service lines. Fig 2
2-Wire P B X extensions with recall. Fig 3
P M B X with additional signalling C-Wire. Fig 4
Fitting Switch No.5A-3. Fig 5

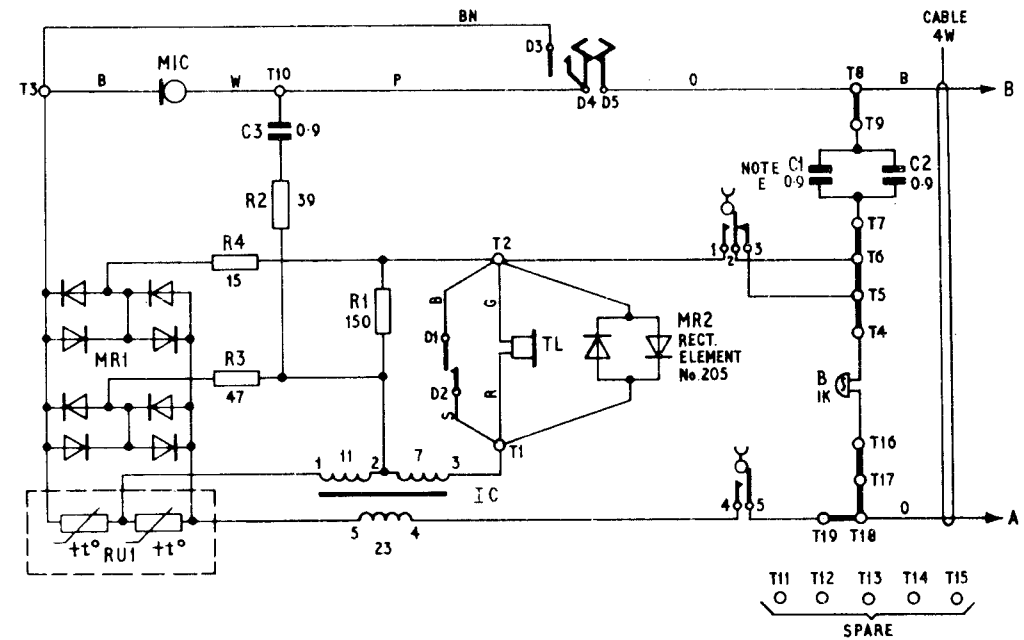
NOTE:-

1. Mark 2 has a plastic base

OTHER REFERENCES

Telecommunications Instructions.	C3 B1025
Auxiliary Units	{ Dgm N848 Dgm N4700
Press Buttons	Dgm N849

FIG.1 CIRCUIT DIAGRAM SHOWING CONNEXIONS AS ISSUED



NOTES:-

- A Telephone No.741 may be used in auto extension plans in place of Telephone Nos. 706, 710, 740, 746. The equivalent auxiliary units for use as required are shown in Dgm.N4700
- B When an extension bell is required, remove Strap T17-T18 and connect the bell in its place
- C The leads of auxiliary units should be terminated as shown on appropriate diagram, any spare lead should be secured to a spare terminal. Where this is not possible the leads should be insulated from electrical contact with parts of the telephone and from each other.
Where additional terminals are required fit:-
1 off Part 2/DST/836 for Terminals T20-T25
2 off Part 2/DST/836 for Terminals T20-T31
or 1 off Strip Connexion No.155A for Terminals T20-T37
- D With the exception of the handset, dial and bell, all components are mounted on a printed wiring board. The complete unit is available for maintenance replacement as Telephone-Unit D92732
- E C1 and C2 may consist of two 0.9µF capacitors as shown, or a single 1.8µF capacitor

P O TELECOMMS HQRS PAPER:- W DISTN:- GENERAL	ISSUE			
		A	REDRAWN MARK 2 ADDED MINOR CHANGES	P.E.
		F.E.I. TROKE	TD2-3.1 SECTION	11:2:1969

FIG.2. AUTOMATIC SYSTEMS SHARED SERVICE LINES

USING:—

- Telephone No.741
- Switch No.5A-3 (Fig.5)
- Part 1/DBR/381
- Part 2/DBU/266 (Colour)
- Thermistor No.1A-1
- Valve Electronic CV8790 Note B
- 2 Parts 1/DBU/270 (Colour)

NOTES:—

- A Remove Straps T5-T6, T16-T17, T17-T18, T18-T19
- B In UAX areas with vibrator ringing, provide and fit Valve Electronic CV8790
- C Exchange line connexions
'A' wire to T18 } Station X
'B' wire to T8 }

'A' wire to T8 } Station Y
'B' wire to T18 }
- D When extension bell is required, provide and connect in place of Strap T14-T15

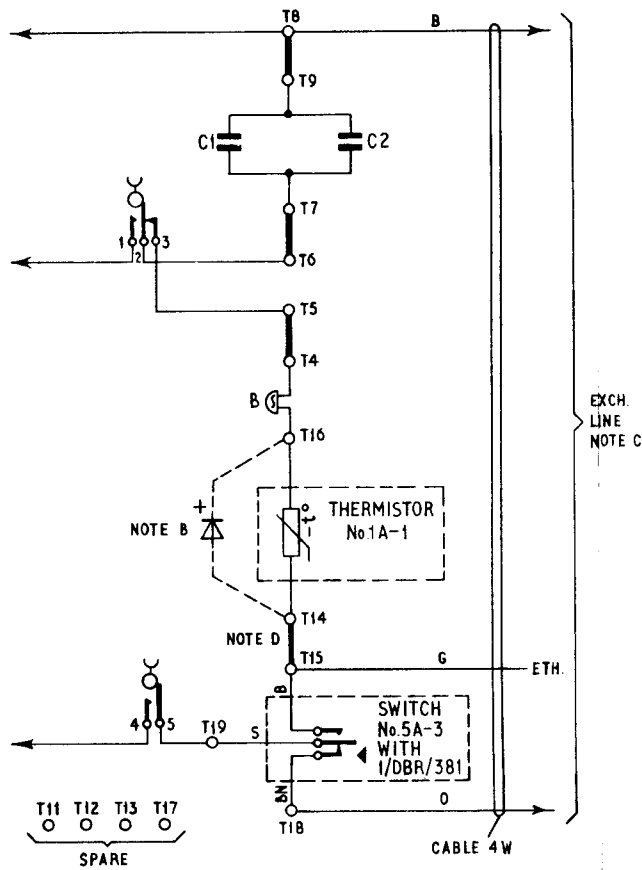


FIG.4. PMBXs WITH ADDITIONAL C-WIRE
(PMBX 2/... and 3/... Note A)

USING:—

- Telephone No.741
- Switch No.5A-3 (Fig. 5)
- Part 1/DBR/381
- Switch No.19B-1 with Kit No.166A
- 2 Parts 1/DBU/270 (Colour)

NOTE:—

- A For 2-Wire external extensions using UAA No.96 or 96A wire the telephone to Fig.3, retaining the Strap T8-T9

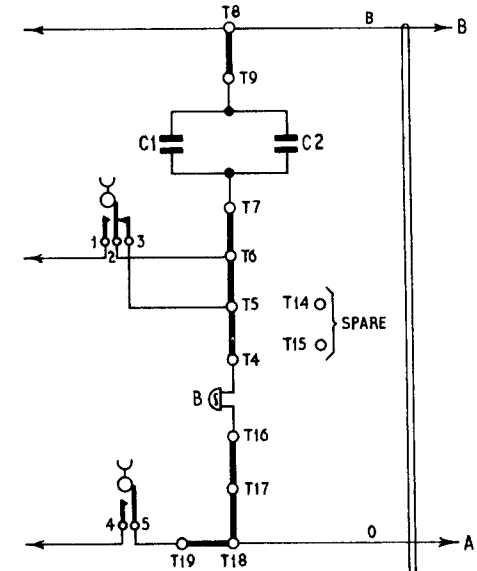


FIG.3. 2-WIRE PBX EXTENSIONS WITH RECALL

USING:—

- Telephone No.741
- Switch No.5A-3 (Fig.5)
- Part 1/DBR/381
- Part 2/DBU/266 (Colour)
- 2 Parts 1/DBU/270 (Colour)

NOTE:—

- A Retain Strap T8-T9 for earth loop recall
Remove Strap T8-T9 for 'one line earth loop disconnected' recall

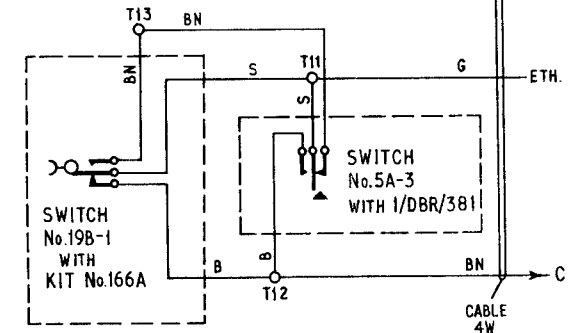
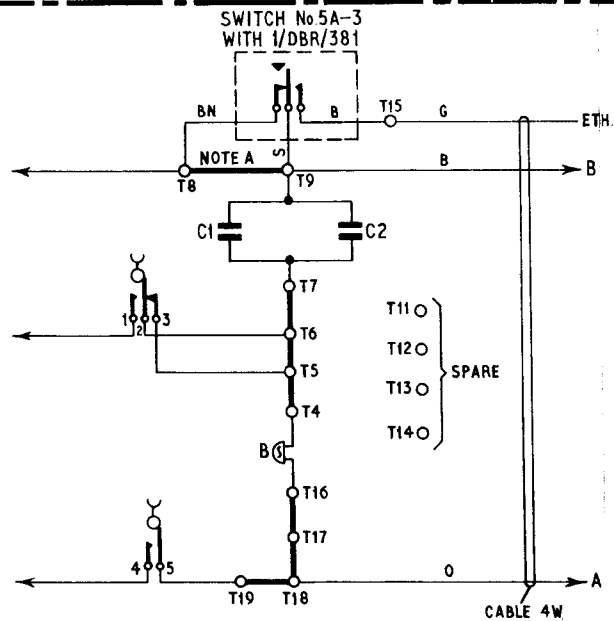
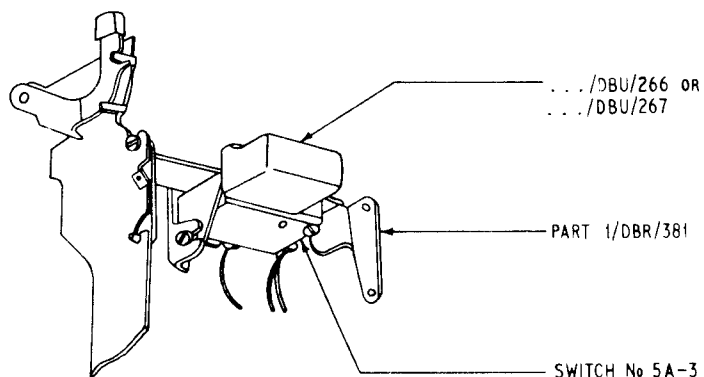


FIG. 5 FITTING SWITCH No. 5A-3
USED WITH.../DBU/266 FOR SHARED SERVICE, 2-WIRE P B X
EXTENSIONS, C-WIRE SIGNALLING ETC. OR FOR BELL ON-OFF
ETC. USING.../DBU/267



NOTES:—

- A When the switch is fitted, the long dummy supplied with the telephone should be removed and stored inside the telephone.
- B The press-button locates in the mid-position of the button slot.
- C Two additional dummy buttons, part 1/DBU/270 (colour) should be provided and fitted, one each side of the press-button and secured with the clamping springs supplied with the telephone.

The Telephone No 741 provides a built-in 'off hook' position for the handset. The handset may be hung on one side of the instrument with the earpiece resting between the horns of the cradle.

OLD SYMBOL	NEW SYMBOL BS3939

WHAT IS A FORM A646?

It's the form you should use to advise Headquarters of any apparatus that is defective or causes difficulties in the field

* Keep a few with you—and use them.

Tl's CIA 0050 and EIA 0091 refer