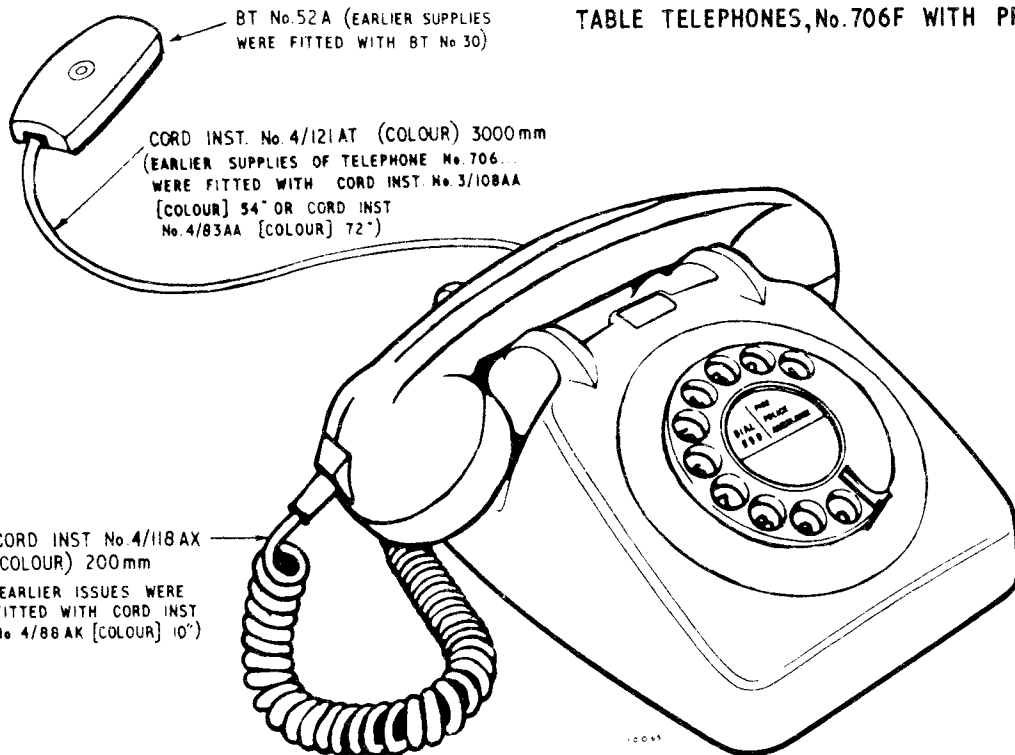


TELEPHONES No.706F & No.706R
TABLE TELEPHONES, No.706F WITH PROVISION FOR ONE PRESS-BUTTON



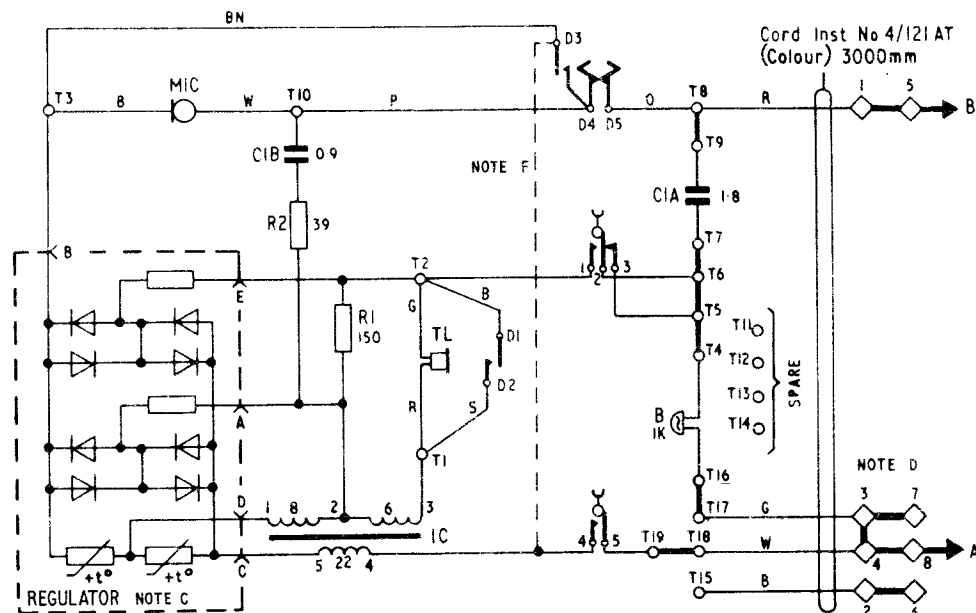
CONTENTS

Circuit diagram, showing connexions as issued	Fig.1
Automatic systems, shared service lines	Fig.2
2-Wire P.B.X. Extensions with recall	Fig.3
P.M.B.X. with additional signalling C-Wire	Fig.4
C.B.S. Nos.2 and 3 Systems including shared service working	Fig.5
C.B. System shared service lines	Fig.6
Generator Signalling private circuits	Fig.7

REFERENCES

Maintenance	TI E5 B2706
Installation	TI C3 B1001
Auxiliary units	Dgms N4700 & N808
Press-buttons	Dgm N809

FIG.1 TELEPHONE No.706F
CIRCUIT DIAGRAM SHOWING CONNEXIONS AS ISSUED



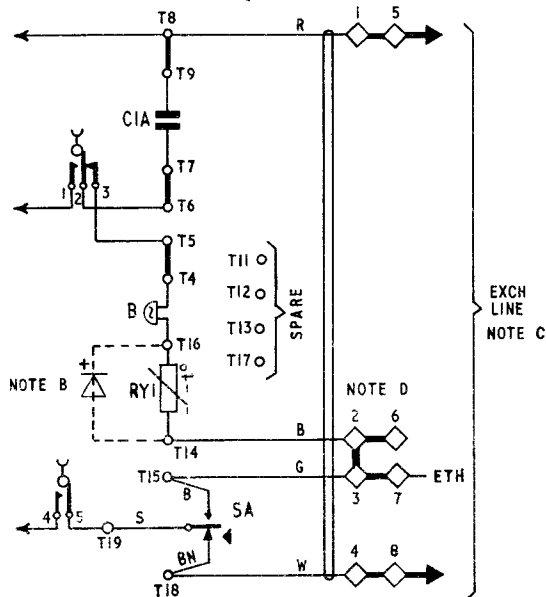
NOTES:-

- A The CB Telephone is no longer stocked. When a dial-less instrument is required a Telephone No.706F should be requisitioned and the dial recovered. A Dial Auto Dummy No.7 should be fitted and the pink and orange conductors joined. See Dgm. N808.
- B Telephone No.706R is supplied complete with a button engraved Recall and a Switch No.5A-3. See Fig.3 for connexions as issued.
- C The regulator is made inoperative when reversed in the jack. In that condition Points B,C and D are connected together.
- D When extension bell is required remove Strap BT3-BT4 and connect bell. A Switch No.5A-3 with Button 3/DBU/264 may be connected blue to T17, slate and brown to T18 to control the extension bell. Where this arrangement is unsuitable, a Switch No.2A may be fitted in a suitable position and wired to short circuit the extension bell.
- E The leads of auxiliary units should be terminated as shown on appropriate diagram. Any spare lead should be secured to a spare terminal. Where this is not possible the leads should be insulated from electrical contact with parts of the telephone and from each other. Where additional terminals are required fit:-
 - 1 Part 2/DST/836 for Terminals T20-T25
 - 2 Parts 2/DST/836 for Terminals T20-T31
 - 1 Strip Conn No.155A for Terminals T20-T37
- F Early issues have dial brown conductor connected to gravity switch Spring 4 instead of T3. This lead should be cut short at both ends or removed and a Cord, Inst No1/42E Brown connected between D3 and T3
- G See Dgms N808 and N4700 for parts that can be added to the Telephone No.706...

PO TELECOMMS HQRS			
PAPER :- W	ISSUE		
DISTN :- GENERAL	H	Redrawn. CBSI deleted. Minor amendments. Telephone No.706R added. <i>Redn.</i>	TD-7-1-1 15-3-76
	G	Fig.1: Note E added G.A.W.	12-11-68

**FIG.2 AUTOMATIC SYSTEMS
 SHARED SERVICE LINES**

- USING :-
 Telephone No.706...
 Switch No.5A-3 (SA)
 Part 4/DBU/263 (Colour)
 Thermistor No.1A-1
 Valve, Electronic CV8790,7875 or 8805
 (Note B)
- NOTES :-
 A Remove Straps T5-T6, T16-T17, T18-T19
 Shift strap from BT3-4 to BT2-3
- B In UAX areas with vibrator ringing,
 provide and fit Valve, Electronic CV...
- C Exchange Line Connexions
 'A' wire to BT8 } Station X
 'B' wire to BT5 }
 'A' wire to BT5 } Station Y
 'B' wire to BT8 }
- D When extension bell is required, remove
 Strap BT2-BT3 and connect bell to
 BT6-BT7



**FIG.3 2 WIRE PBX EXTENSIONS WITH RECALL
 TELEPHONE No.706R CONNEXIONS AS ISSUED**

- USING :-
 Telephone No.706R
 or
 Telephone No.706F
 Switch No.5A-3 (SA)
 Part 4 /DBU/263 (Colour)
 Rectifier Element No.205

- NOTES :-
 A On earlier issues the BN & S
 leads were shown reversed

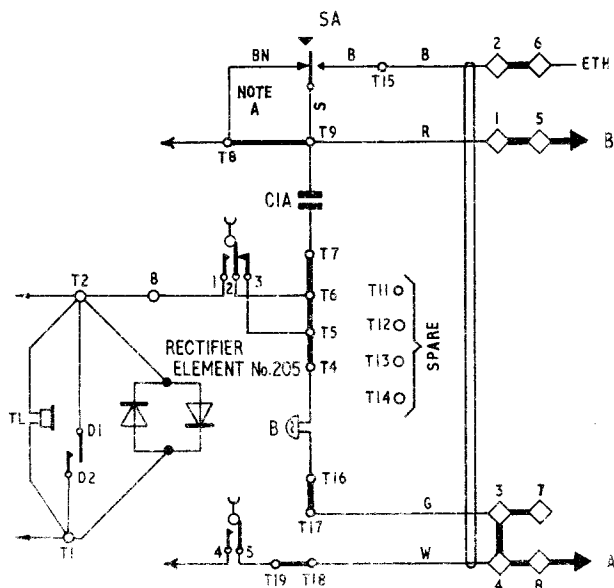


FIG.4 PMBX WITH ADDITIONAL SIGNALLING C WIRE (PMBX 2/... and 3/... Note C)

- USING :-
 Telephone No.706R
 Part 1/DSP/1252 (SB) } Notes A & B
 or
 Telephone No.706F
 Switch No.5A-3 (SA) } Note A
 Part 4/DBU/263 Colour
 Part 1/DSP/1252 (SB)

- NOTES :-
 A Remove Strap BT3-BT4
 and add Strap T17-T18
- B The Switch No.5A-3 in a
 Telephone No.706R must be
 rearranged to accord with
 the diagram
- C For 2-Wire extensions
 using UAA No.96 or 96A
 wire the telephone to
 Fig.3, or use Telephone
 No.706R as issued

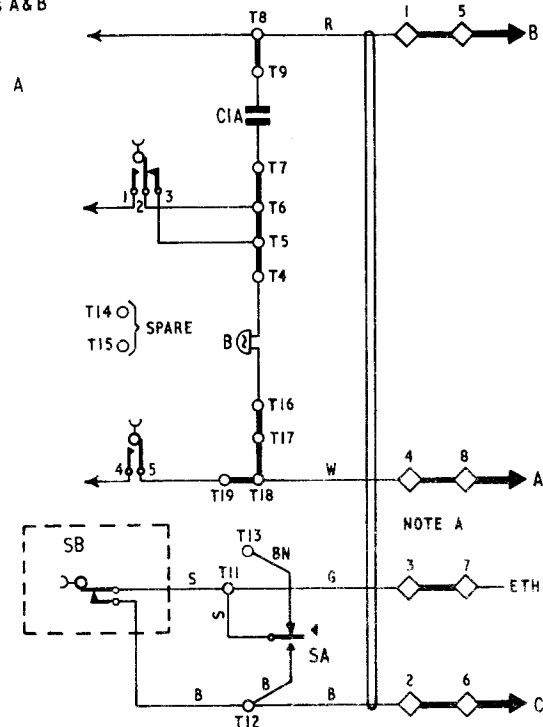


FIG 5 C.B.S. No.2 & 3 SYSTEMS

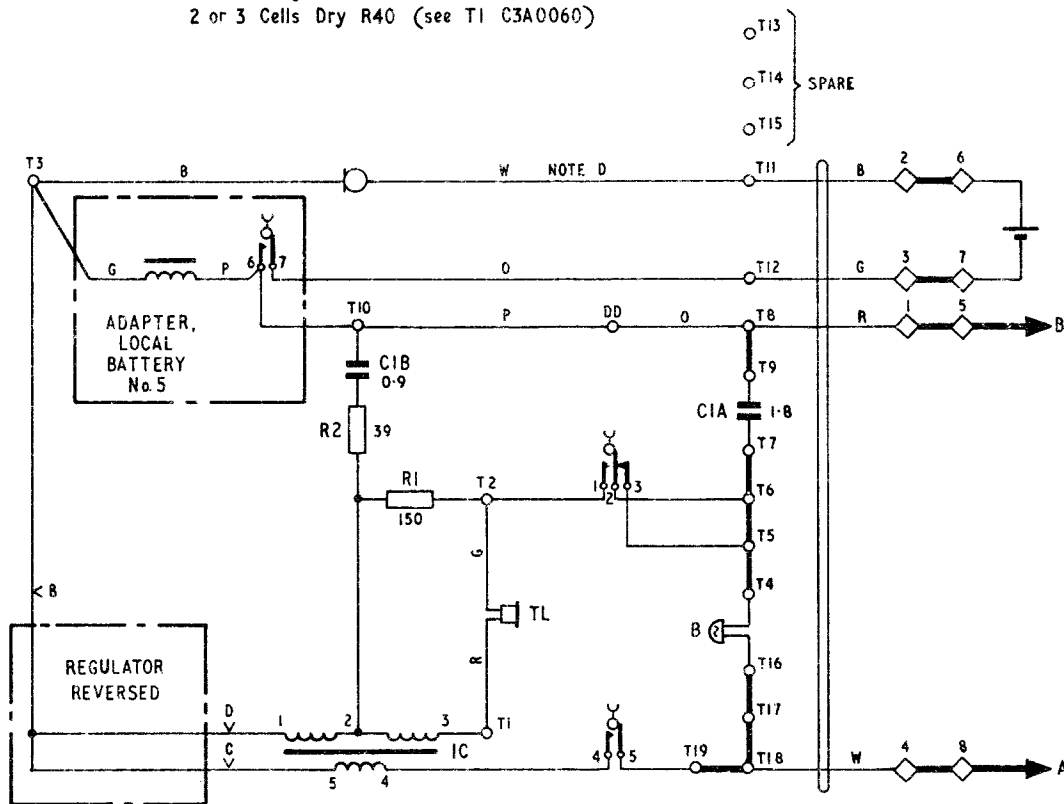
Using :-

Telephone No.706F . Note A

Adapter Local Battery No.5

Box Battery No.3

2 or 3 Cells Dry R40 (see TI C3A0060)



NOTES :-

A Convert Telephone No.706F to No.706CB as described in Fig.1 note A

B Insert Strap T17- T18

C Reverse regulator in jack

D Transfer white lead of handset cord from T10-T11

E For Shared Service Working

i Replace Cord, inst No.4/121AT (Colour) 3000 mm by Cord, Inst No.6/61AT (Colour) and BT No.52A by BT No.35A

ii Remove Strap T5-T6 and T17-T18

iii Exchange Line Connexions :-

A Wire to BT 10 } Station X

B Wire to BT 7 } Station Y

A Wire to BT 7 } Station Y

B Wire to BT 10 }

iv If extension bell is required remove Strap BT5- BT6 and connect bell to BT11-BT12

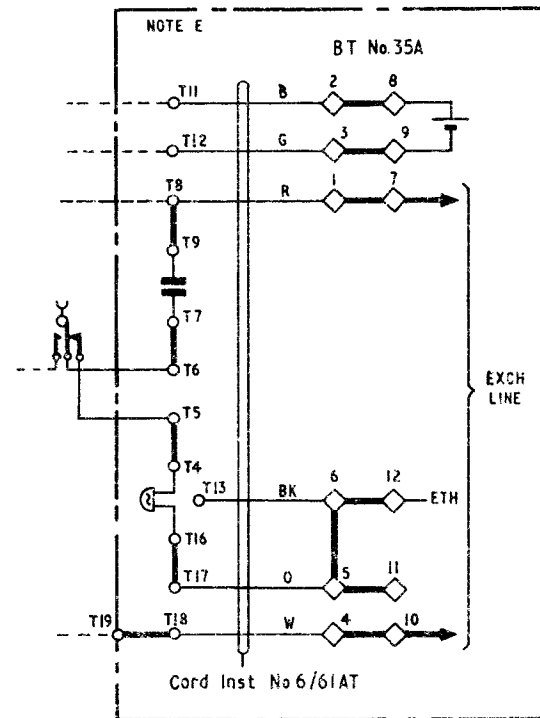
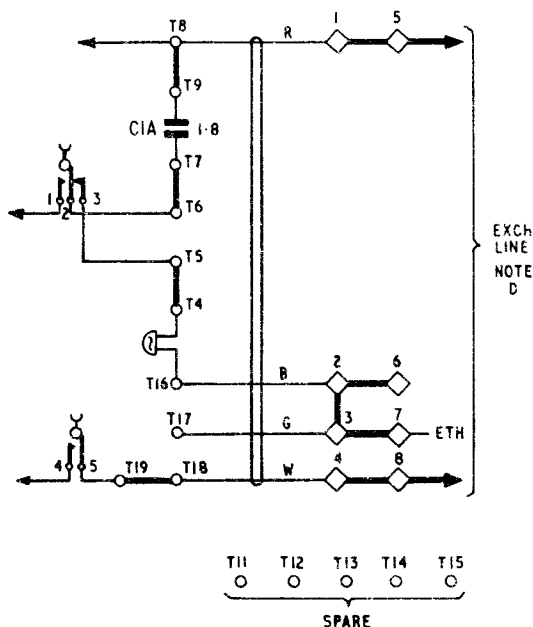


FIG. 6 C B SYSTEMS, SHARED SERVICE LINES USING :-
Telephone No.706F. NOTE A

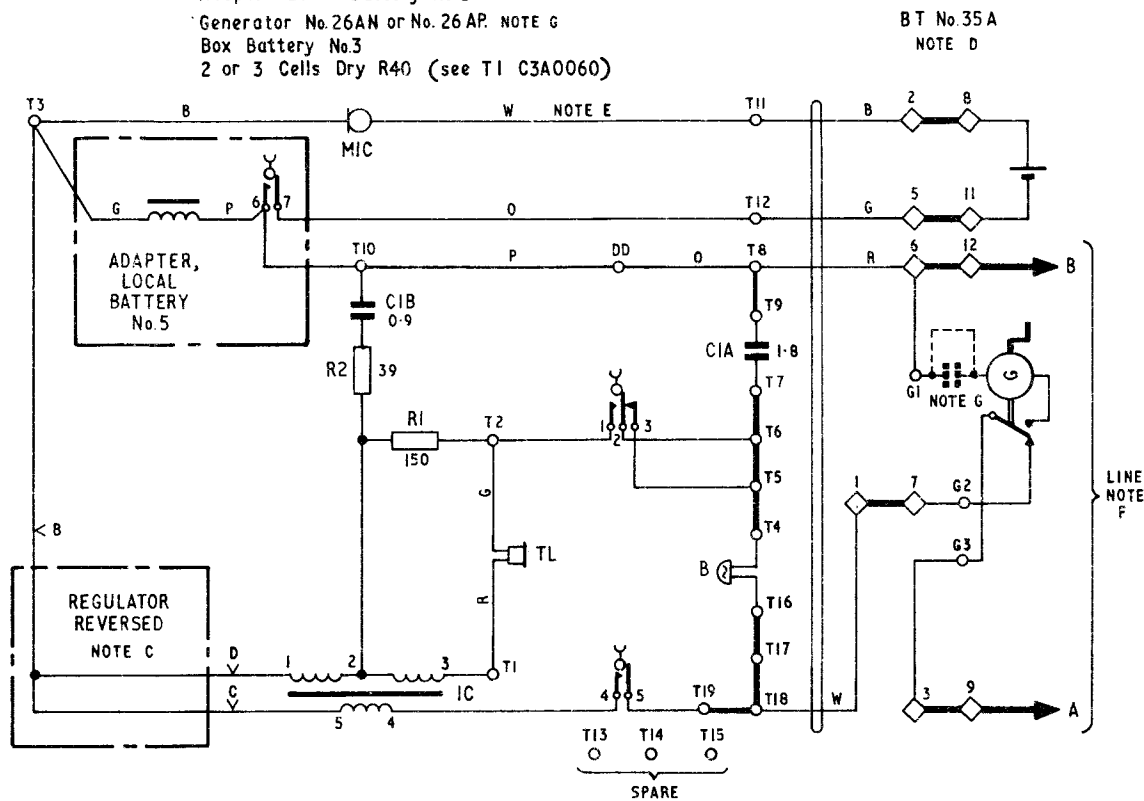


NOTES :-

- A Convert Telephone No.706F to 706CB as described in Fig.1 Note A.
- B Remove Strap T5-T6 & T16-T17. Remove Strap BT3-BT4, insert Strap BT2-BT3.
- C If extension bell is required provide and fit in place of Strap BT2-BT3
- D Exchange Line Connexions
 - 'A' wire to BT5 } Station X
 - 'B' wire to BT8 }
 - 'A' wire to BT8 } Station Y
 - 'B' wire to BT5 }
 Transpose 'X' and 'Y' for minor CB IO Exchanges

FIG. 7 GENERATOR SIGNALLING PRIVATE CIRCUITS

USING :-
Telephone No.706F. NOTE A
Adaptor Local Battery No.5
Generator No.26AN or No. 26AP. NOTE G
Box Battery No.3
2 or 3 Cells Dry R40 (see TI C3A0060)



NOTES :-

- A Convert Telephone No.706F to 706CB as described in Fig.1 Note A
- B Insert Strap T17-T18
- C Reverse regulator in jack
- D Replace BT No.52A by BT No.35A
- E Transfer white lead of handset cord from T10 to T11
- F For private circuits where a similar telephone is fitted at the distant end, the line connexion should be such that the two batteries are connected in series aiding
- G Generator No.26 AP may be used if the capacitor in it is short circuited.