

TERMINATION OF INTER-P.B.X. EXTENSION  
 SWITCHBOARDS AT 3796 & N1070  
 SIGNALLING GROUP A(i): A/WE IN; A/WE OR G/AC OUT.

N775

ISSUE B

SUPERSEDES FOR NEW  
 WORK N968 FIG.2

NOTES :-

1. AMPLIFIED INTER-P.B.X. EXTENSIONS SHOULD ALWAYS (AND OTHERS NORMALLY) BE TERMINATED TO THIS DIAGRAM. SEE NOTE 2.
2. NIGHT SERVICE THIS CIRCUIT IS ONLY SUITABLE FOR EXTENDING EXCHANGE LINES TO THE DISTANT SWITCHBOARD. WHEN IT IS DESIRED TO ANSWER EXCHANGE CALLS FROM THE DISTANT SWITCHBOARD DGM. N778 SHOULD BE USED.
3. THE TERMINATION IS ALSO SUITABLE FOR INTER-P.B.X. EXTENSIONS ON SWITCHBOARD AT 1810, AT 3718 & CB.887.
4. FOR TRANSMISSION LIMITS SEE E.I. TRANSMISSION TELEPHONES B 3590.
5. BATTERY SUPPLY TO UAA No.45 SHOULD BE MADE VIA FUSE No.44A/I FITTED ON SPARE FUSE MOUNTING IN SWITCHBOARD. (SEE NOTES 6&7). FUSE MAY SUPPLY 1 TO 4 U.A.'S WITH COMMON FUSE. (SEE NOTE 5) MAY BE CONNECTED BETWEEN U.A. TERML. 17 & FUSE.
6. N705 SHOWS SIGNALLING RESISTANCE LIMITS FOR VARIOUS VOLTAGES
7. WHERE SIGNALLING REQUIREMENTS DEMAND ADDITIONAL SIGNALLING BATTERIES SERVING 1 TO 4 U.A.'S WITH COMMON FUSE (SEE NOTE 5) MAY BE CONNECTED BETWEEN U.A. TERML. 17 & FUSE.
8. ON EARLIER SWITCHBOARDS IT MAY BE NECESSARY TO CHANGE THE JACK No.510 BS TO A JACK No.710 BO CN 65 LINE SWITCHBOARDS & ON 180 LINE SWITCHBOARDS TO CHANGE JACK No.510 BO TO JACK No.810 BN.
9. AUX. MAKE SPRINGS OF JACK No.810 BN ARE NUMBERED (7) & (8), AS SHOWN.  
 AUX. MAKE SPRINGS OF JACK No.710 BO ARE NUMBERED (7) & (6).

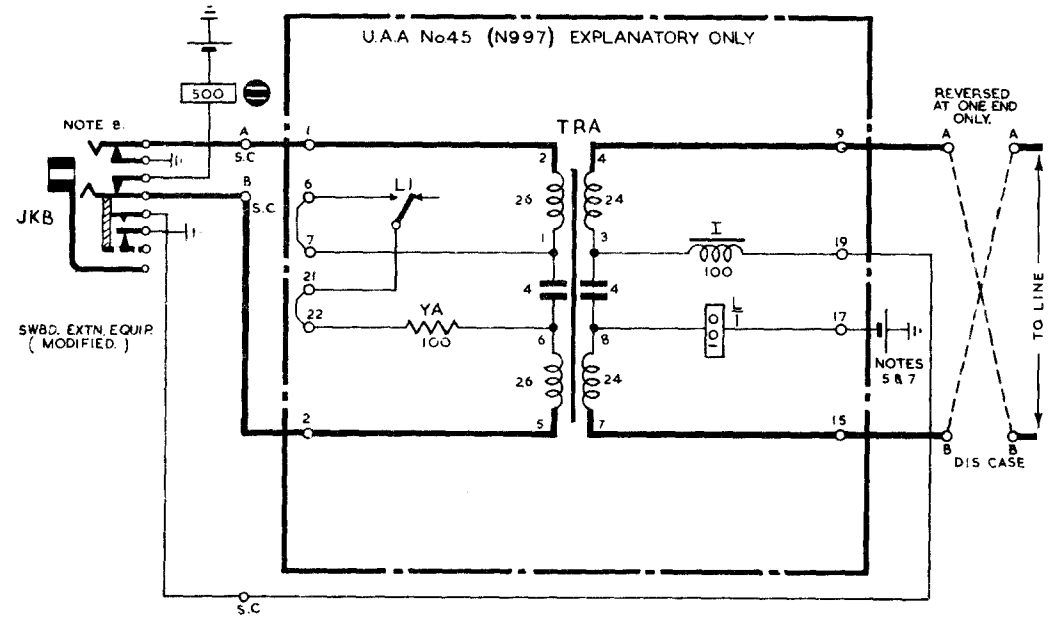
RECOVER :-

WIRES OF SELECTED EXTN. AT EXTN. S.C. & DIS CASE.

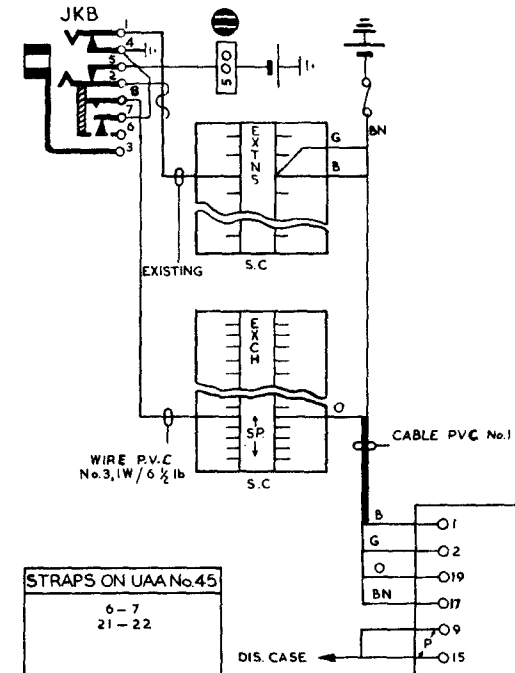
PROVIDE :-

STRAP BETWEEN 4 & 7 ON JACK.  
 WIRE FROM AUXILIARY MAKE SPRING (8) (NOTE 9) TO SPARE TAG ON EXCH. LINE STRIP CONNECTION.  
 CABLE P.V.C. No.1 AS SHOWN TO U.A.A No.45.  
 CABLE FROM TAGS 9 & 15 OF U.A.A. No.45 TO DIS CASE EXTN. TERMLS.

EXPLANATORY



WIRING DETAILS



P.O.E.D.  
 S. B.C.H.  
 PAPER:- W  
 CIRCULATION  
 GENERAL

ISSUE	DESCRIPTION	DATE
B	NEW FORMAT MINOR AMENDMENTS	17.5.66
A	JACK WIRING & NOTES AMENDED	9.3.62
	P. A. MARCHANT	13.12.54